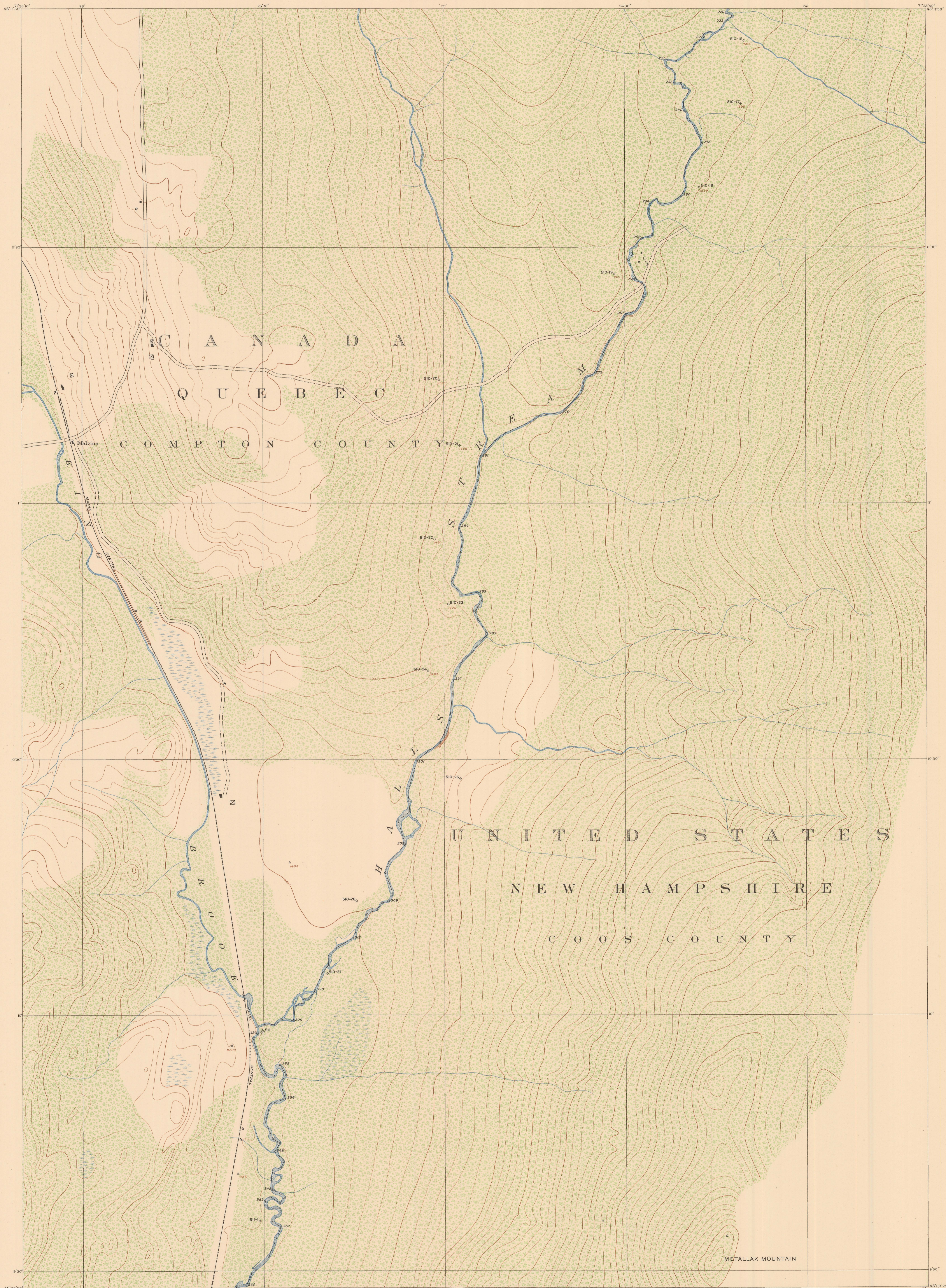


# INTERNATIONAL BOUNDARY

FROM THE ST. LAWRENCE RIVER  
TO THE SOURCE OF THE ST. CROIX RIVER

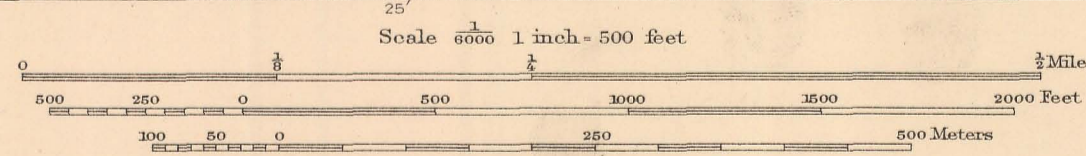
SHEET NO. 12

SURVEYED UNDER THE DIRECTION OF  
UNITED STATES COMMISSIONER HIS BRITANNIC MAJESTY'S COMMISSIONER  
O. H. TITTMANN, 1905-1915 W. F. KING, 1908-1916  
E. C. BARNARD, 1915-1921 J. J. McARTHUR, 1917-  
E. LESTER-JONES, 1921  
IN ACCORDANCE WITH ARTICLE III OF THE TREATY OF 1808.



FOR THE UNITED STATES  
JAMES H. VAN WAGENEN, ENGINEER TO THE COMMISSION  
SURVEYORS IN CHARGE: JOHN E. McGRATH, 1915, AND  
F. H. BRUNDAGE, 1921 AND 1922  
CONTROL BY S. H. BLAIR AND J. E. SINCLAIR, 1914,  
JESSE HILL AND NELSON W. SMITH, 1916, AND  
F. H. BRUNDAGE, 1916 AND 1921  
TOPOGRAPHY BY F. H. BRUNDAGE, 1915  
MONUMENTING BY F. H. BRUNDAGE, 1922  
INSPECTION BY JAMES H. VAN WAGENEN, 1916, AND  
F. H. BRUNDAGE, 1922

FOR HIS MAJESTY  
J. D. CRAIG, D. L. S., ENGINEER TO THE COMMISSION  
INSPECTOR BY A. D. CRAIG, D. L. S., 1916



Timbered Areas  
Deciduous Evergreen

International Boundary Line  
Boundary Turning Points (not marked)  
Boundary Reference Marks:  
Iron monuments  
Bronze posts, 6 in. high

We certify that this map is one of the quadruplicate set of sixty-one (61) maps adopted under Article III of the Treaty between Great Britain and the United States, signed at Washington April 11, 1808, and that we have marked thereon the Boundary Line as re-established by the Commissioners designated above, in accordance with the provisions of the said Article.

Signed November 28, 1923.  
W. F. King  
His Britannic Majesty's Commissioner  
E. Lester Jones  
United States Commissioner