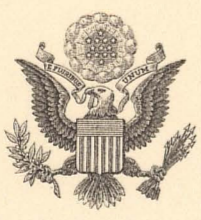


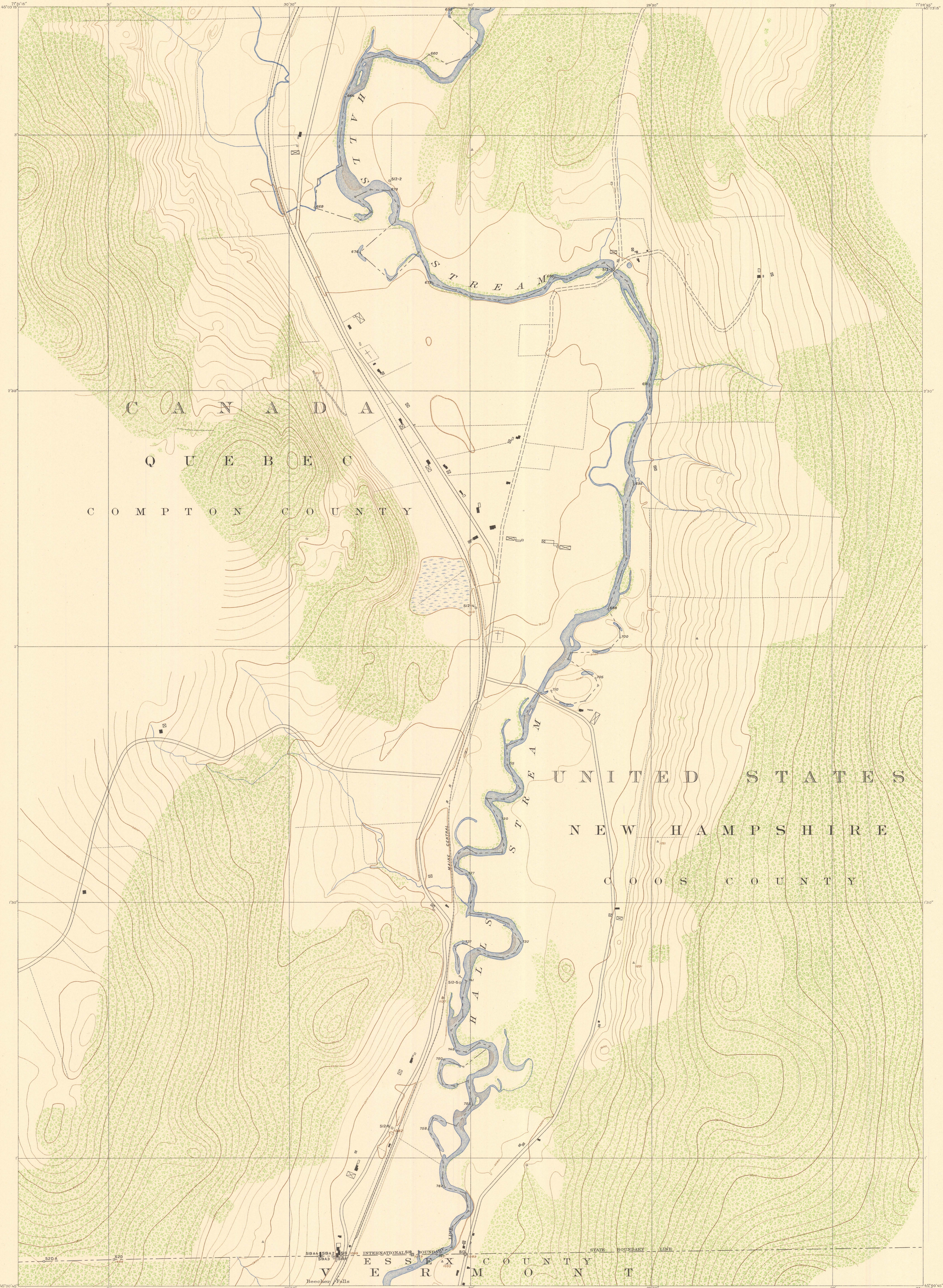
INTERNATIONAL BOUNDARY

FROM THE ST. LAWRENCE RIVER
TO THE SOURCE OF THE ST. CROIX RIVER

SHEET No. 8



SURVEYED UNDER THE DIRECTION OF
UNITED STATES COMMISSIONER
O. H. TITTMANN, 1908-1915
E. C. BARNARD, 1915-1921
E. LESTER JONES, 1921-
HIS BRITANNIC MAJESTY'S COMMISSIONER
W. F. KING, 1908-1916
J. J. McARTHUR, 1917-
IN ACCORDANCE WITH ARTICLE III OF THE TREATY OF 1908.



FOR THE UNITED STATES
JAMES H. VAN WAGENEN, ENGINEER TO THE COMMISSION
SURVEYORS IN CHARGE: JOHN E. MCGRATH, 1914, AND
F. H. BRUNDAGE, 1921 AND 1922
CONTROL BY R. H. BLAIN AND J. S. SUNCLAIR, 1914, AND
F. H. BRUNDAGE, JESSE HILL, AND NELSON W. SMITH, 1916
TOPOGRAPHY BY F. H. BRUNDAGE, 1914
MONUMENTING BY F. H. BRUNDAGE, 1922
INSPECTION BY JAMES H. VAN WAGENEN, 1916, AND
F. H. BRUNDAGE, 1921

FOR HIS MAJESTY
J. D. CRAIG, D. L. S., ENGINEER TO THE COMMISSION
INSPECTION BY J. D. CRAIG, D. L. S., 1917

Scale 1 inch = 500 Feet
1:500
0 500 1000 1500 2000 2500 Feet
0 500 1000 1500 2000 Meters

Contour interval 20 Feet.
Benchmarks in Roman numerals.
Subsequent precise leveling indicates that
the elevations on this sheet are 0.2 foot too low.

Thicketed Areas
Deciduous Evergreen

International Boundary Line
Boundary Monuments:
Large Small
Boundary Turning Points (not marked)
Boundary Reference Marks:
Iron monuments
Bronze tablets

We certify that this map is one of the quadruplicate set of sixty-one (61) maps adopted under Article III of the Treaty between Great Britain and the United States, signed at Washington April 11, 1908, and that we have re-established by the Commission the Boundary Line as re-established by the Commissioners designated above, in accordance with the provisions of the said Article.

Signed July 17, 1923.
W. F. King
His Britannic Majesty's Commissioner

E. Lester Jones
United States Commissioner

SHEET NO. 8