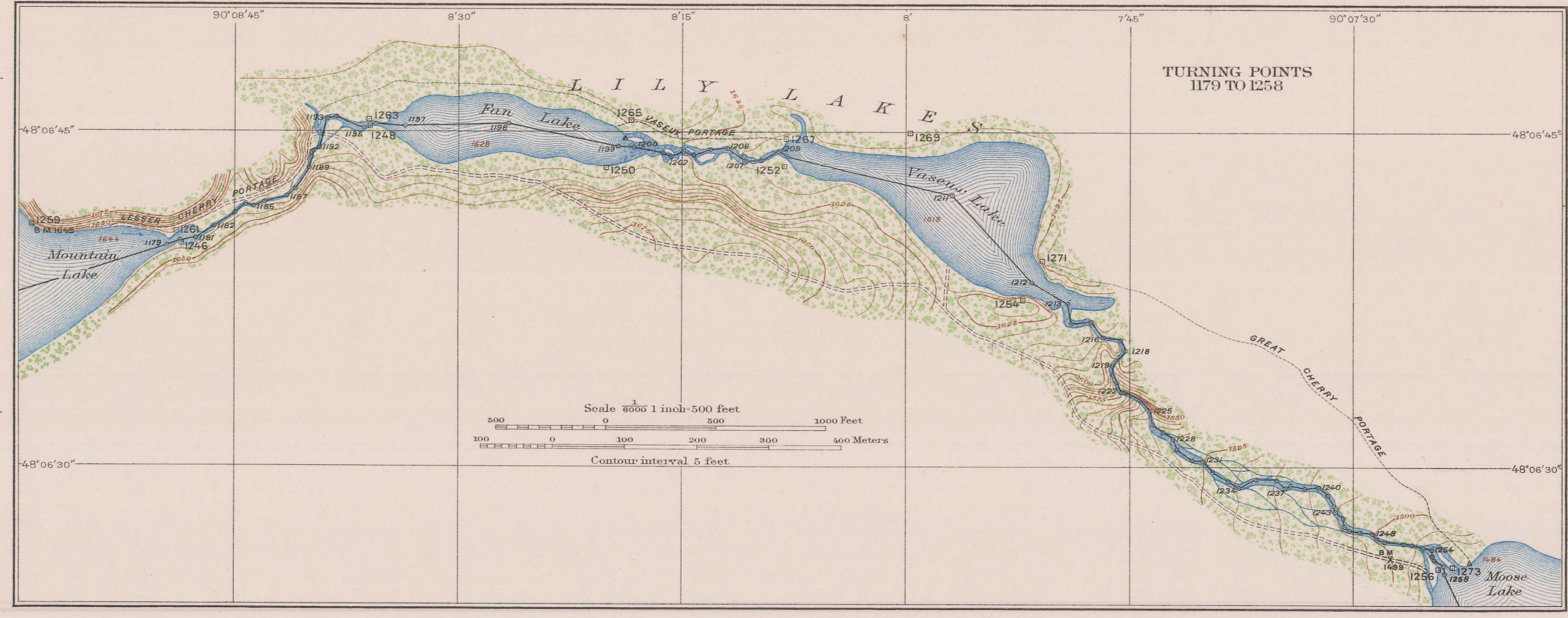
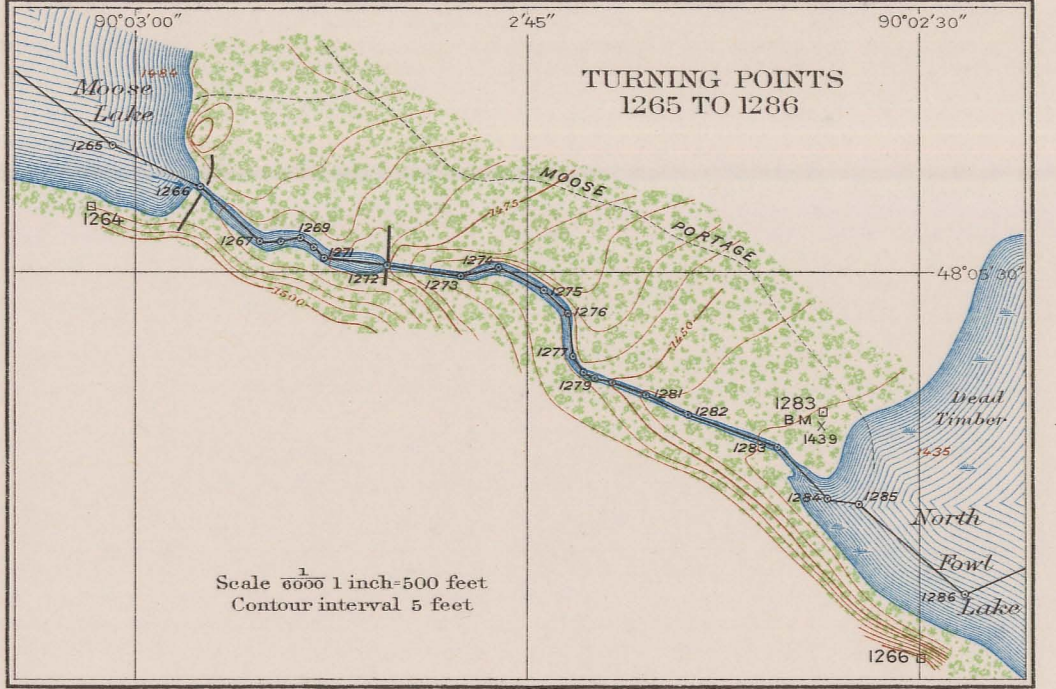
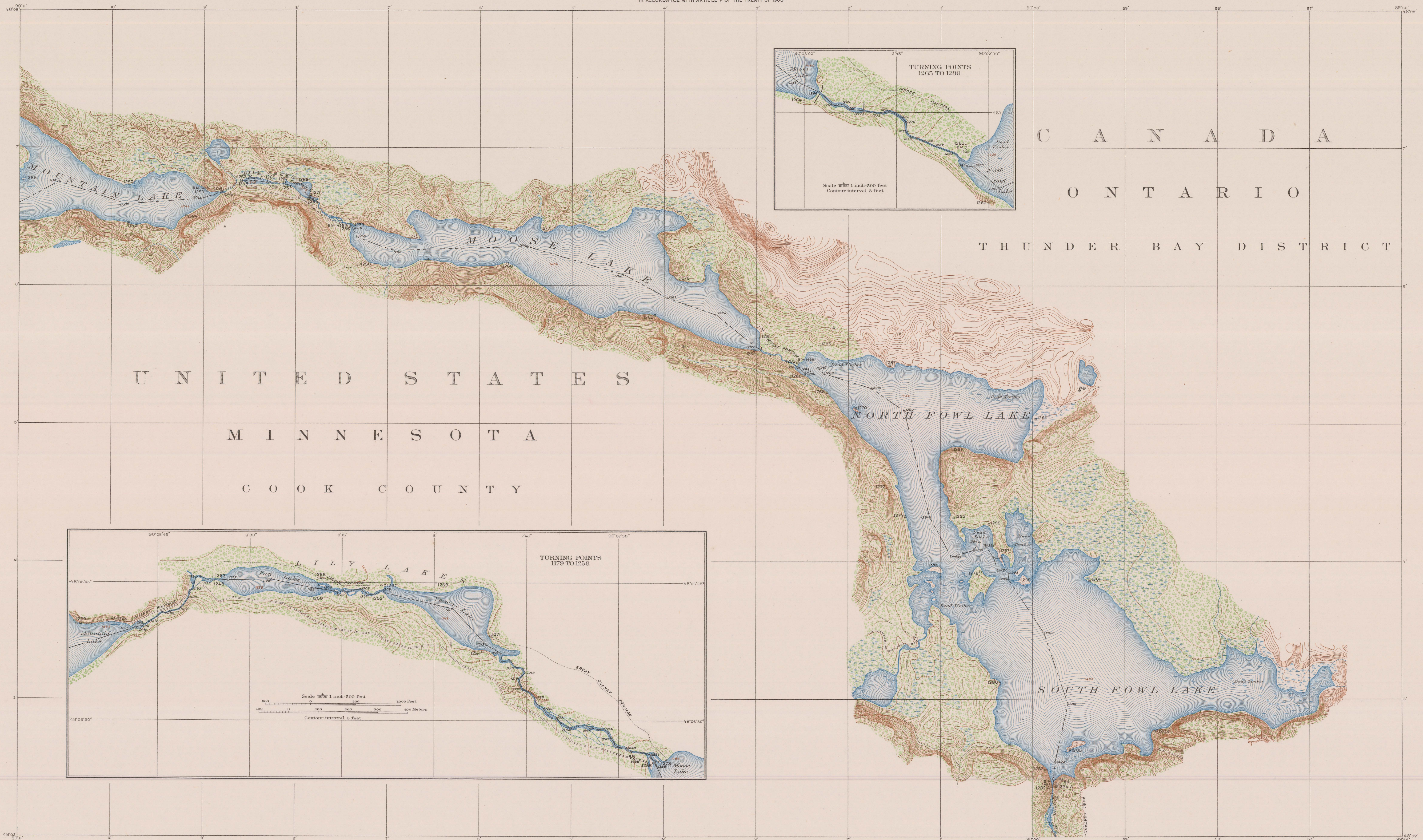
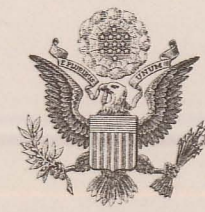


INTERNATIONAL BOUNDARY

FROM THE NORTHWESTERNMOST POINT OF LAKE OF THE WOODS TO LAKE SUPERIOR

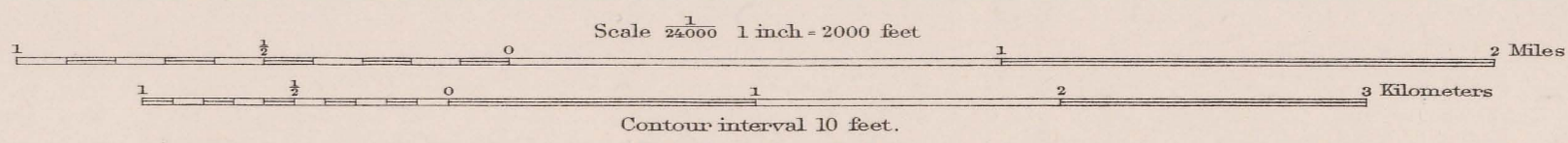
SHEET No. 28

SURVEYED UNDER THE DIRECTION OF UNITED STATES COMMISSIONER O. H. TITTMANN, 1908-1915 HIS BRITANNIC MAJESTY'S COMMISSIONER W. F. KING, 1908-1916 E. C. BARNARD, 1915-1921 J. J. McARTHUR, 1917-1924 E. LESTER JONES, 1921-1929 J. D. CRAIG, 1925- JAMES H. VAN WAGENEN, 1929- IN ACCORDANCE WITH ARTICLE V OF THE TREATY OF 1908



FOR THE UNITED STATES
JESSE HILL, ENGINEER TO THE COMMISSION
1909 AND 1910, JOHN J. FURBER, 1917,
AND JESSE HILL, 1917 AND 1918
CONTROL BY W. D. FAIRFIELD, 1909 AND 1910,
JESSE HILL, 1917, E. R. MARTIN, 1917 AND
1918, AND R. K. LYNE, 1918
TOPOGRAPHY BY RUDOLPH LUSCHER, 1909,
EVA HENRIKSSON, 1910, AND R. K. LYNE,
J. J. CHARTERS, AND L. DUNKLEE, 1917
MONUMENTING BY E. R. MARTIN, 1917 AND 1918
INSPECTION BY JESSE HILL, 1921
MATHEMATICIAN, R. N. ARNHEIM
CARTOGRAPHER, RAYMOND L. ROSS

FOR HIS MAJESTY
J. A. FOUNDER, D. L. S., ENGINEER TO THE COMMISSION
INSPECTION BY G. T. PRINSEP, D. L. S., 1921



Timbered Areas
Deciduous Evergreen
International Boundary Line
Boundary Reference Marks (Because posts, 8 in. high) in
Boundary Turning Points (not marked)
Reference Marks 2 1/2 in. high 2 1/2 in. wide 2 1/2 in. thick in diameter

We certify that this map is one of the quadruplicate set of thirty-six (36) maps prepared under Article V of the Treaty between Great Britain and the United States of America, signed at Washington, April 11, 1908, and that we have marked hereon the Boundary Line as reestablished by the Commissioners designated above, in accordance with the provisions of the said Treaty.
Signed July 11, 1929

J. D. Craig, James H. Van Wagenen
His Britannic Majesty's Commissioner United States Commissioner