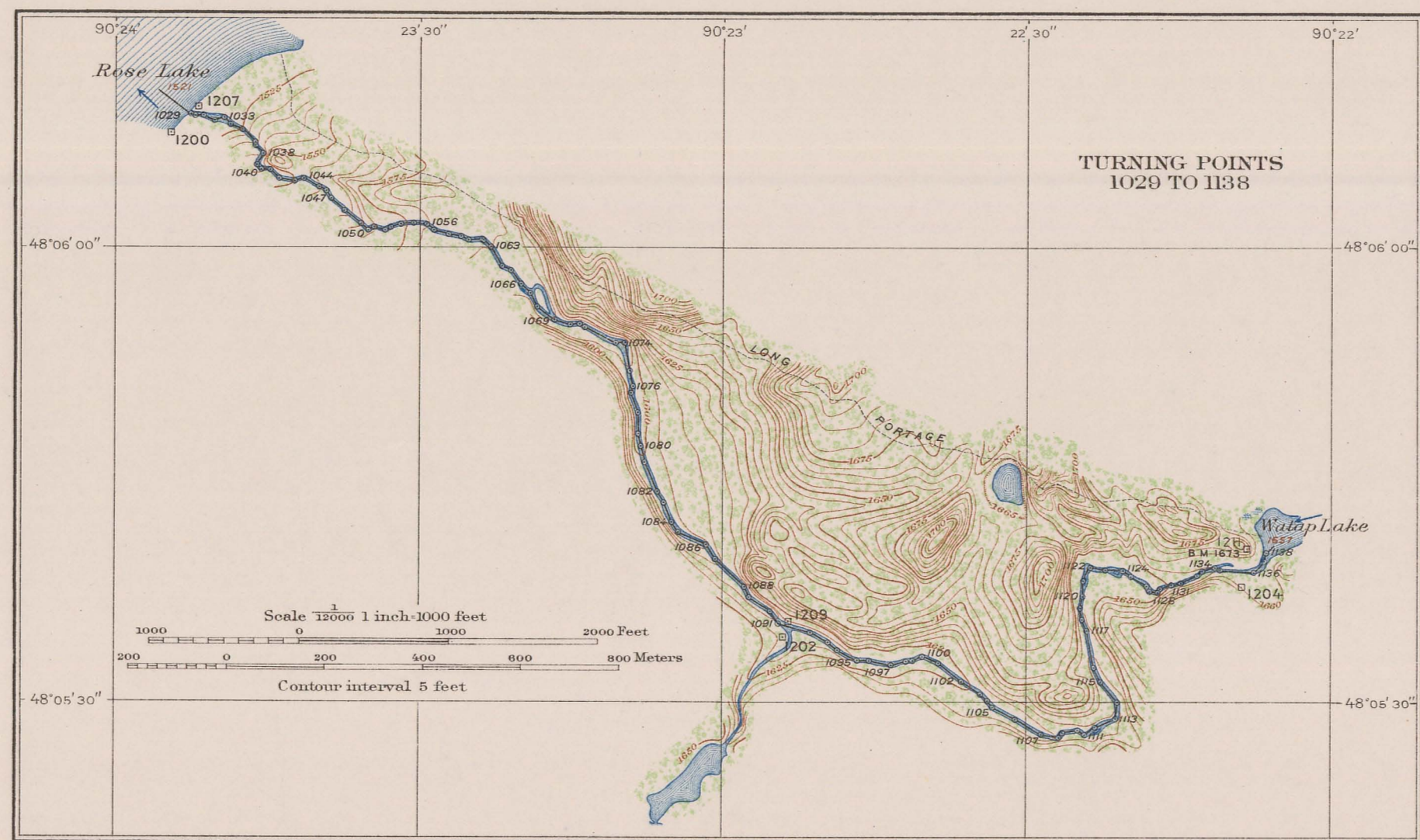
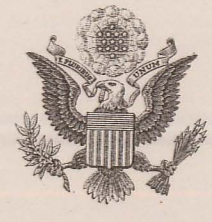


INTERNATIONAL BOUNDARY

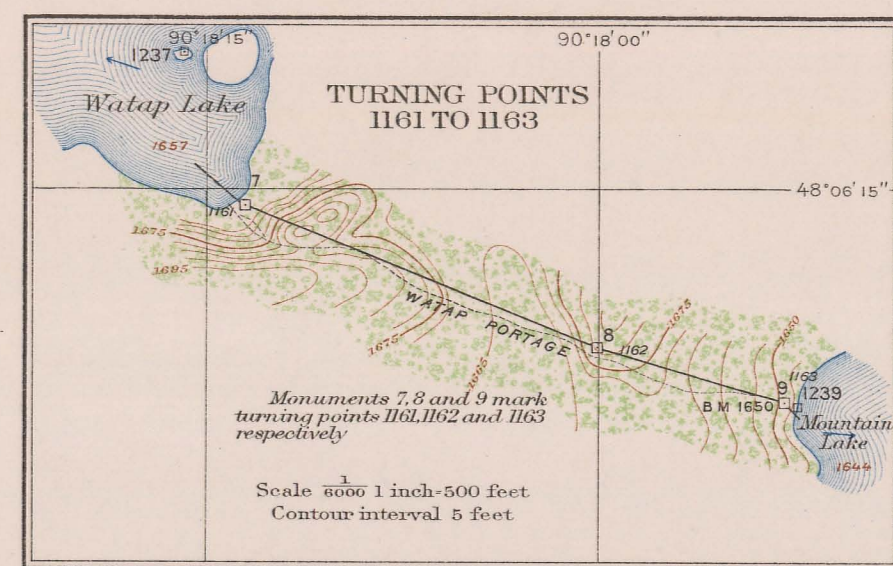
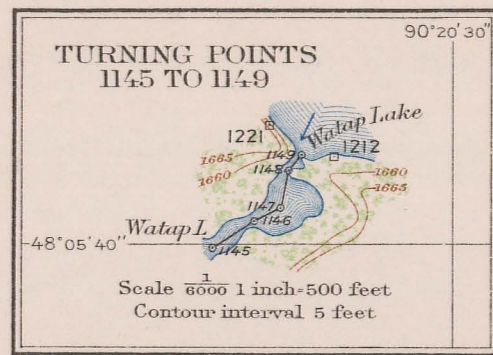
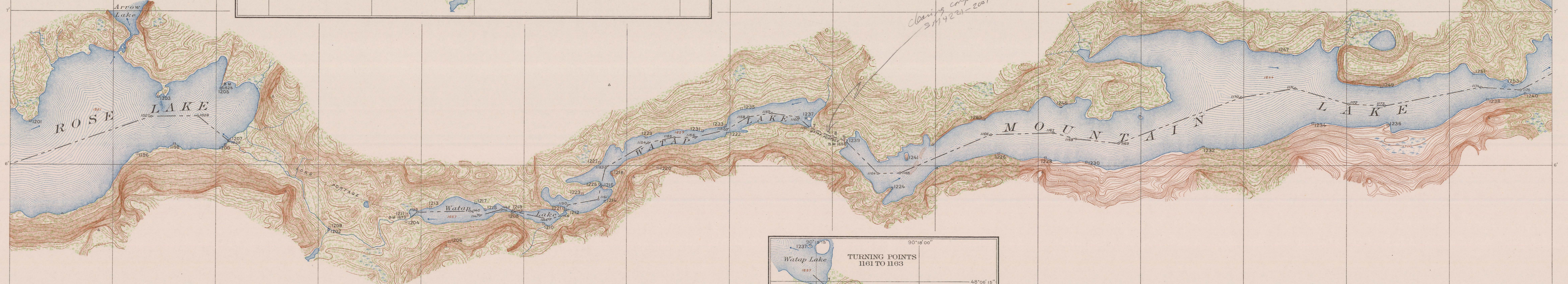
FROM THE NORTHWESTERMOST POINT OF LAKE OF THE WOODS TO LAKE SUPERIOR

SHEET No. 27

SURVEYED UNDER THE DIRECTION OF
 UNITED STATES COMMISSIONER HIS BRITANNIC MAJESTY'S COMMISSIONER
 O. H. TITTMANN, 1908-1915 W. F. KING, 1908-1916
 E. C. BARNARD, 1915-1921 J. J. McARTHUR, 1917-1924
 E. LESTER JONES, 1921-1929 J. D. CRAIG, 1925-
 JAMES A. VAN WAGENEN, 1929-
 IN ACCORDANCE WITH ARTICLE V OF THE TREATY OF 1908



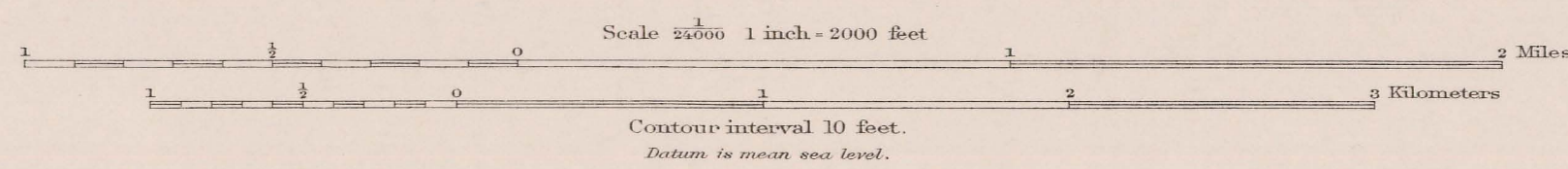
C A N A D A
 O N T A R I O
 T H U N D E R B A Y D I S T R I C T



U N I T E D S T A T E S
 M I N N E S O T A
 C O O K C O U N T Y

FOR THE UNITED STATES
 JESSE HILL, ENGINEER TO THE COMMISSION
 SURVEYORS IN CHARGE: W. B. FAIRFIELD, 1910, JOHN J. PHELAN, 1917, AND JESSE HILL, 1917
 CONTROL BY W. B. FAIRFIELD, 1910, E. R. MARTIN, AND JESSE HILL, 1917
 TOPOGRAPHY BY KAI HENDRIKSEN, 1910, E. R. LYT, J. J. CHARTERS, G. C. PHILLIPS, P. W. HODDLETON, AND L. DUNKLE, 1917
 MONUMENTING BY E. R. MARTIN, 1917
 INSPECTION BY JESSE HILL, 1921
 MATHEMATICIAN, R. N. ADMUS
 CARTOGRAPHER, RAYMOND L. ROSS

FOR HIS MAJESTY
 J. A. POWDER, D. L. S., ENGINEER TO THE COMMISSION
 INSPECTION BY G. T. PRINSEP, D. L. S., 1921



Timbered Areas
 Deciduous Evergreen
 International Boundary Line
 Boundary Reference Mark (Borne post, 1/4 in. high)
 Boundary Turning Points (not marked)
 Boundary Monuments on portages

We certify that this map is one of the quadruplicate set of thirty-six (36) maps prepared under Article V of the Treaty between Great Britain and the United States of America, signed at Washington, April 11, 1908, and that we have marked hereon the Boundary Line as reestablished by the Commissioners designated above, in accordance with the provisions of the said Treaty.

Signed July 11, 1929
 J. D. Craig, His Britannic Majesty's Commissioner
 James A. Van Wagenen, United States Commissioner