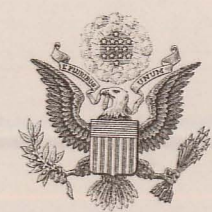


INTERNATIONAL BOUNDARY

FROM THE NORTHWESTERNMOST POINT OF LAKE OF THE WOODS TO LAKE SUPERIOR

SHEET No. 26

SURVEYED UNDER THE DIRECTION OF UNITED STATES COMMISSIONER HIS BRITANNIC MAJESTY'S COMMISSIONER
O. H. TITTMANN, 1909-1915 W. F. KING, 1909-1916
E. C. BARNARD, 1915-1921 J. J. McARTHUR, 1917-1924
L. LESTER JONES, 1921-1923 J. J. CRAIG, 1925
JAMES H. VAN WAGENEN, 1929
IN ACCORDANCE WITH ARTICLE V OF THE TREATY OF 1908



CANADA

ONTARIO

THUNDER BAY DISTRICT

NORTH LAKE

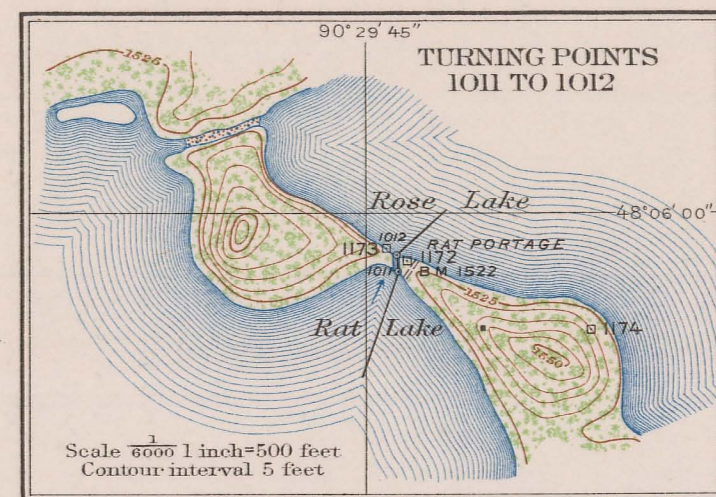
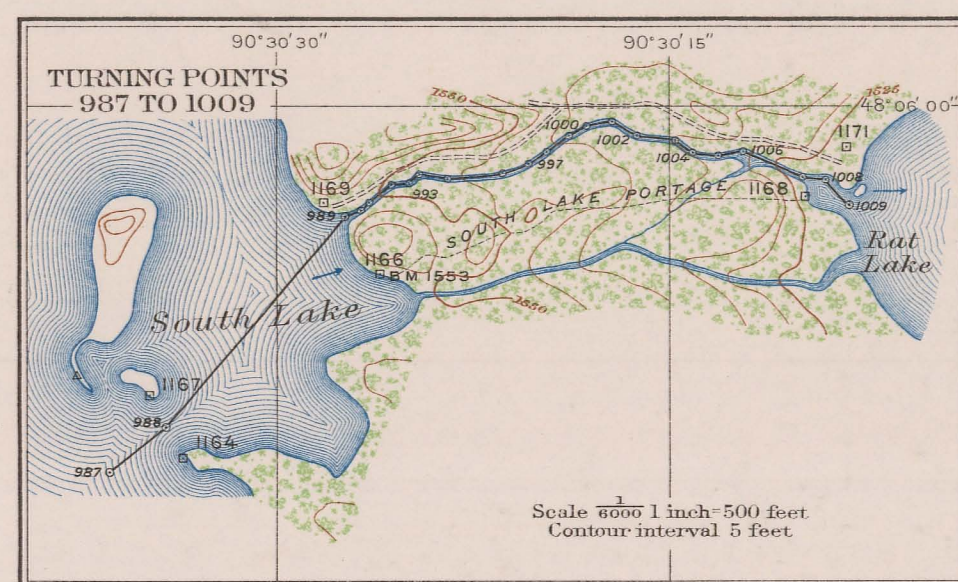
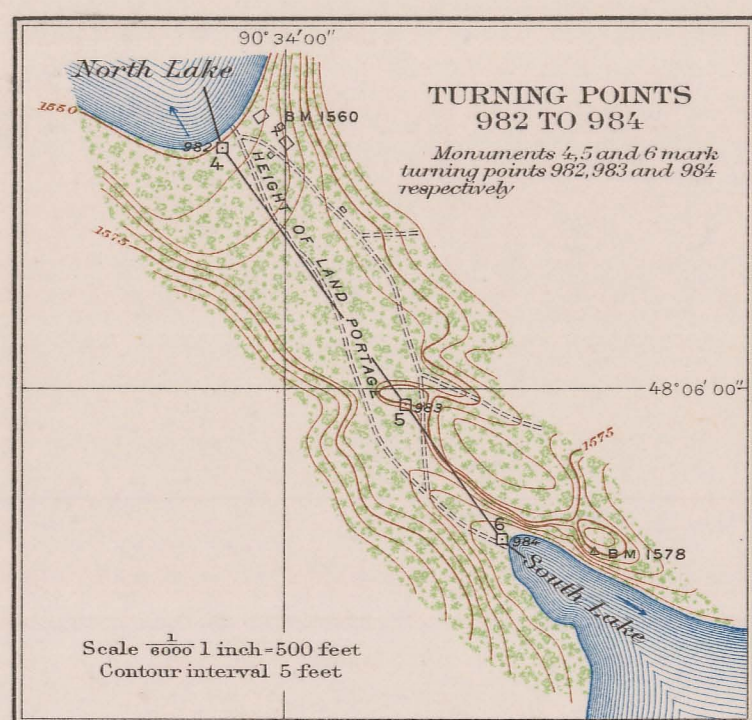
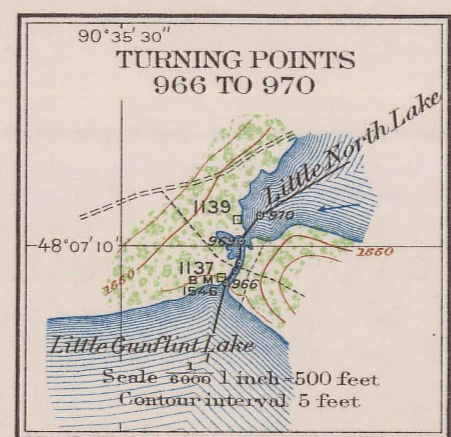
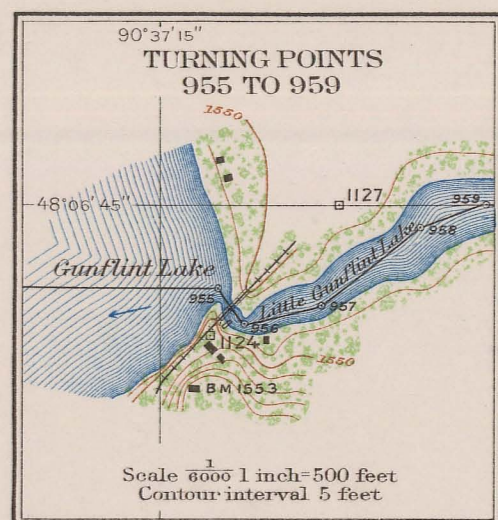
SOUTH LAKE

GUNFLINT LAKE

UNITED STATES

MINNESOTA

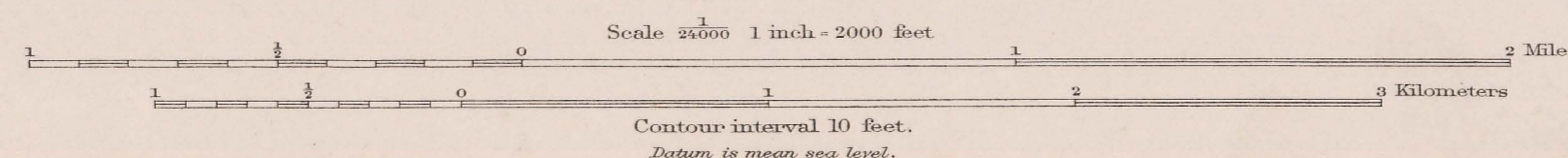
COOK COUNTY



clearing complaint
5014221-2007733

FOR THE UNITED STATES
JESSE HILL, ENGINEER TO THE COMMISSION
SURVEYORS IN CHARGE: W. B. FAIRFIELD, 1911
JOHN J. PHELAN, 1916 AND 1917, AND JESSE
HILL, 1917
CONTROL BY W. B. FAIRFIELD, 1911, AND
E. R. MARTIN, AND JESSE HILL, 1917
TOPOGRAPHY BY JOHN J. PHELAN, 1911,
W. C. BASTIAN, AND D. W. EXTON, 1916,
R. K. LYNT, J. J. CHARTERS, AND
S. C. PHILLIPS, 1916 AND 1917, AND
P. W. HUDDLESTON, 1917
MONUMENTING BY E. R. MARTIN, 1917
INSPECTION BY JESSE HILL, 1921
MATHEMATICIAN, R. N. ASHURN
CARTOGRAPHER, RAYMOND L. ROSS

FOR HIS MAJESTY
J. A. POWDER, D. L. S., ENGINEER TO THE COMMISSION
INSPECTION BY G. T. PRINSEP, D. L. S., 1921



Timbered Areas
Deciduous Evergreen
International Boundary Line
Boundary Reference Marks (Iron posts 8 in. high)
Boundary Turning Points (not marked)
Boundary Monuments on portages

We certify that this map is one of the quadruplicate set of thirty-six (36) maps prepared under Article V of the Treaty between Great Britain and the United States of America, signed at Washington, April 11, 1908, and that we have marked hereon the Boundary Line as reestablished by the Commissioners designated above, in accordance with the provisions of the said Treaty.

Signed July 11, 1929

J. J. Craig, James H. Van Wageningen
His Britannic Majesty's Commissioner United States Commissioner