

INTERNATIONAL BOUNDARY

FROM THE NORTHWESTERMOST POINT OF LAKE OF THE WOODS TO LAKE SUPERIOR

SHEET No. 23

SURVEYED UNDER THE DIRECTION OF
UNITED STATES COMMISSIONER HIS BRITANNIC MAJESTY'S COMMISSIONER
O. H. TITMANN, 1908-1915 W. F. KING, 1908-1916
E. C. BARNARD, 1915-1921 J. J. MARSHUR, 1917-1924
E. LESTER JONES, 1921- J. D. CRAIG, 1925-
IN ACCORDANCE WITH ARTICLE V OF THE TREATY OF 1808



C A N A D A

O N T A R I O

R A I N Y R I V E R D I S T R I C T

C A C H E B A Y

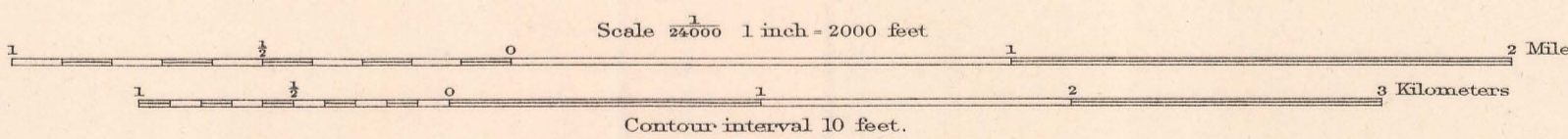
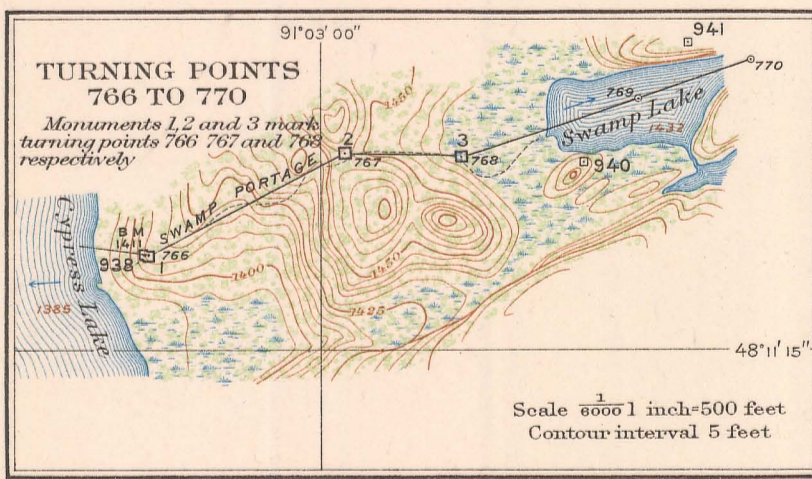
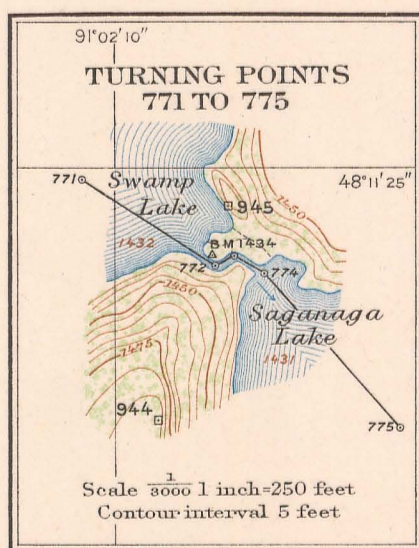
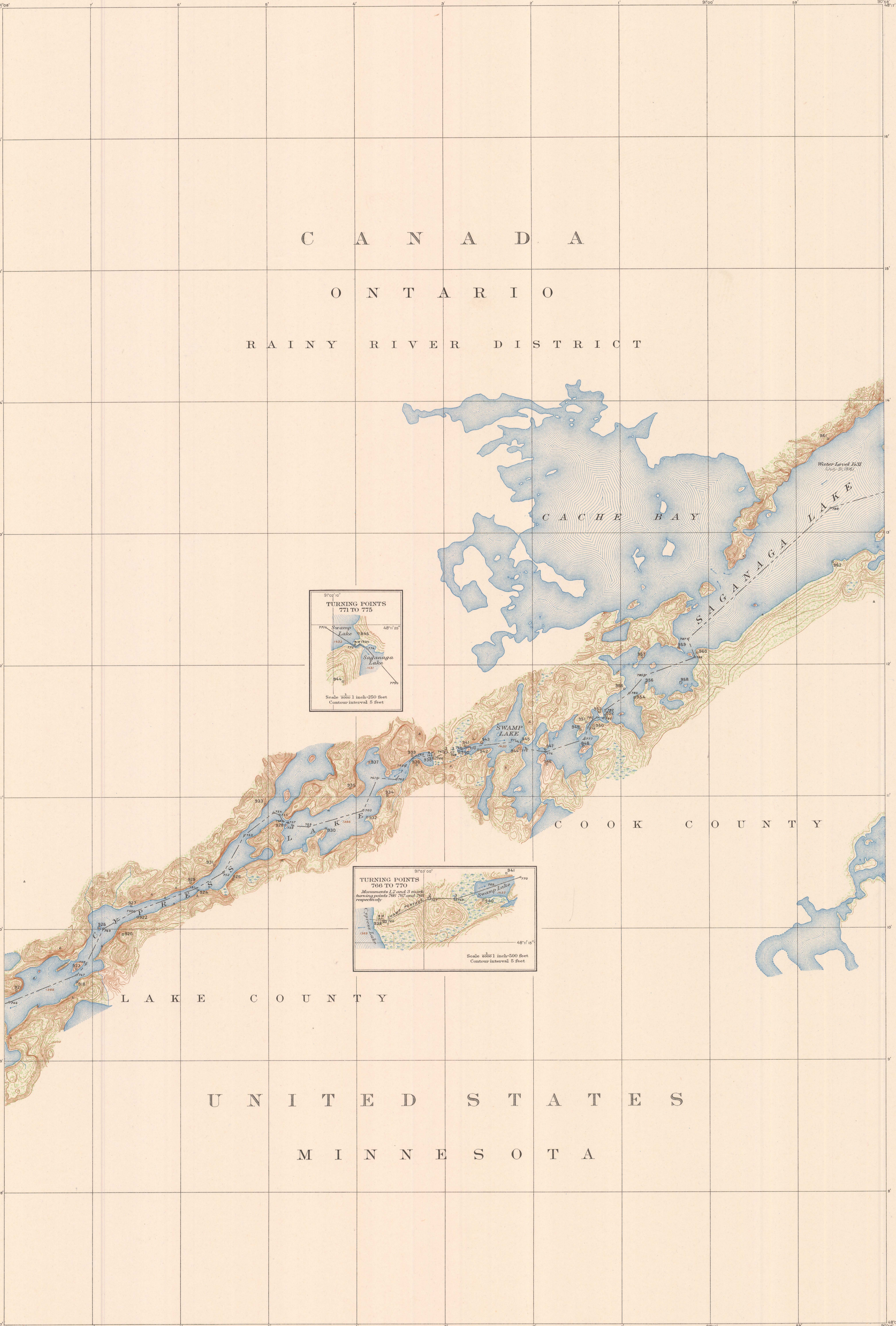
S A G A N A G A L A K E

C O O K C O U N T Y

L A K E C O U N T Y

U N I T E D S T A T E S

M I N N E S O T A



FOR THE UNITED STATES
JAMES H. VAN WAGENEN, ENGINEER TO THE COMMISSION
SURVEYORS IN CHARGE: W. B. FAIRFIELD, 1912, AND JOHN J. PHELAN, 1916
CONTROL BY W. B. FAIRFIELD, 1912, AND E. B. MARTIN, 1917
TOPOGRAPHY BY JOHN J. PHELAN, 1912, R. K. LYNT, J. J. CHARTERS, D. W. ESTON, W. C. BRATTAN, AND G. C. PHILLIPS, 1916
MONUMENTING BY E. B. MARTIN, 1916 AND 1917
INSPECTION BY JESSE HILL, 1921
MATHEMATICIAN, R. M. ASHUR
CARTOGRAPHER, RAYMOND L. ROSS

FOR HIS MAJESTY
J. A. POUNDER, D. L. S., ENGINEER TO THE COMMISSION
INSPECTION BY G. T. PRINSEY, D. L. S., 1921

Timbered Areas
Deciduous Evergreen

International Boundary Line
Boundary Reference Marks (Diameter points, 6 in. high)
Boundary Turning Points (not marked)
Boundary Monuments on Postages

We certify that this map is one of the quadruplicate set of thirty-six (36) maps prepared under Article V of the Treaty between Great Britain and the United States of America, signed at Washington, April 11, 1808, and that we have marked hereon the Boundary Line as reestablished by the Commissioners designated above, in accordance with the provisions of the said Treaty.
Signed March 28, 1929

J. D. Craig, His Britannic Majesty's Commissioner
E. Lester Jones, United States Commissioner