

INTERNATIONAL BOUNDARY

FROM THE NORTHWESTERNMOST POINT OF LAKE OF THE WOODS TO LAKE SUPERIOR

SHEET No. 20

SURVEYED UNDER THE DIRECTION OF
UNITED STATES COMMISSIONER HIS BRITANNIC MAJESTY'S COMMISSIONER
D. H. TITTMANN, 1908-1915 W. F. KING, 1908-1916
E. C. BARNARD, 1916-1921 J. J. McARTHUR, 1917-1924
E. LESTER JONES, 1921- J. D. CRAIG, 1925-
IN ACCORDANCE WITH ARTICLE V OF THE TREATY OF 1908



C A N A D A

O N T A R I O

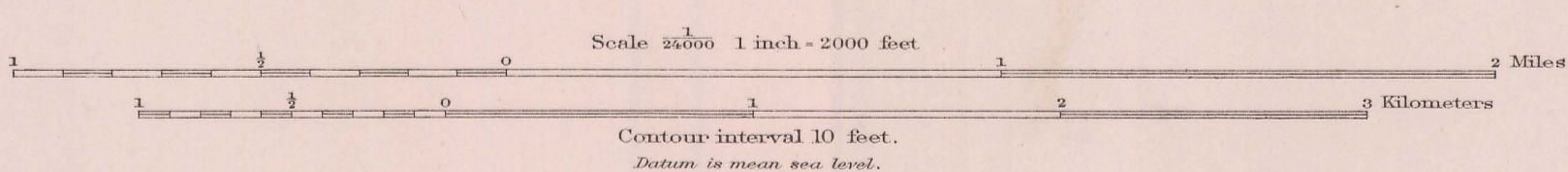
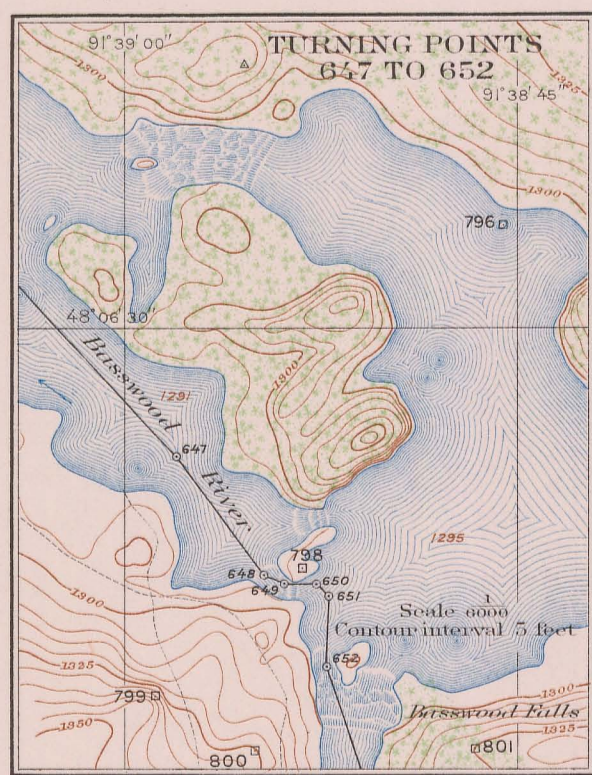
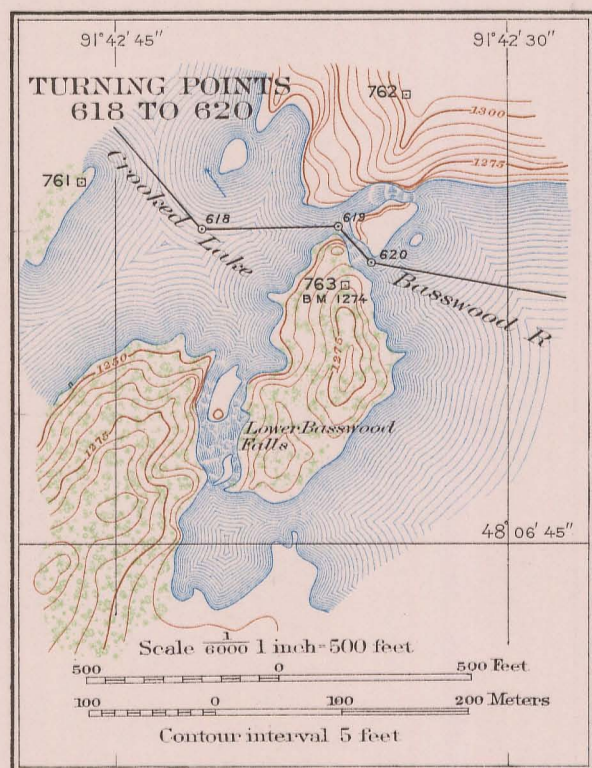
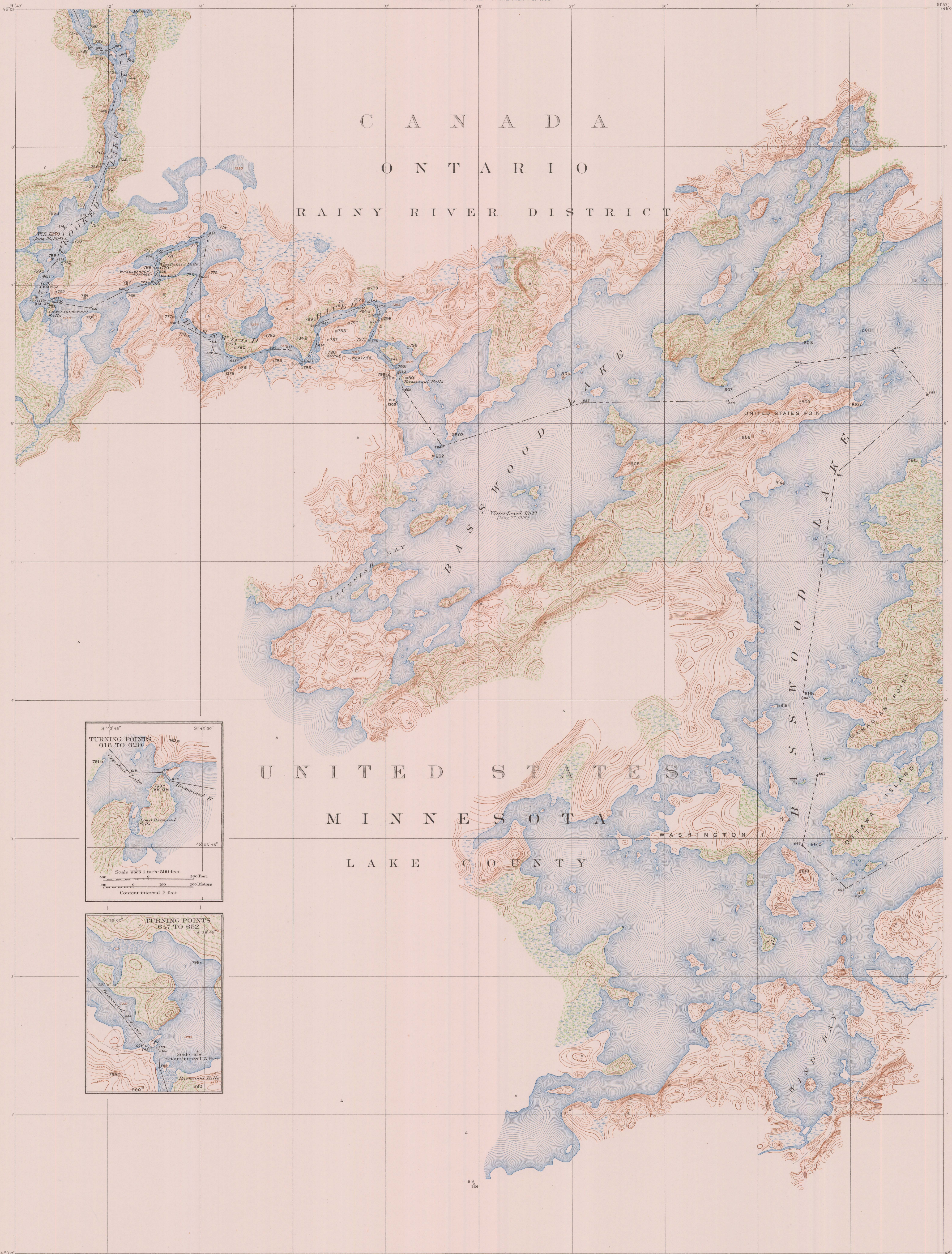
R A I N Y R I V E R D I S T R I C T

U N I T E D S T A T E S

M I N N E S O T A

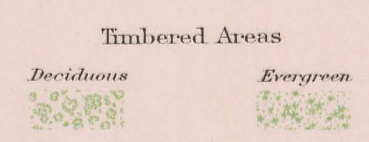
L A K E C O U N T Y

WASHINGTON



FOR THE UNITED STATES
JAMES H. VAN WAGEN, ENGINEER TO THE COMMISSION
SUBVEYORS IN CHARGE: W. B. FAIRFIELD, 1913, 1914, AND 1915, AND JOHN J. PHELAN, 1916
CONTROLS BY W. S. FAIRFIELD, 1913, 1914, AND 1915
JOHN J. PHELAN, 1913 AND 1914, AND E. R. MARTIN, 1915
TOPOGRAPHY BY JOHN J. PHELAN, 1913, 1914, AND 1915
H. C. CORRIGAN, 1915, AND J. J. CHARTERS, 1915 AND 1916
MONUMENTING BY E. R. MARTIN, 1916
INSPECTION BY JESSE HILL, 1921
MATHEMATICIAN, R. N. ASHUR
CARTOGRAPHER, RAYMOND L. ROSS

FOR HIS MAJESTY
J. A. POUNDER, D. L. S., ENGINEER TO THE COMMISSION
INSPECTION BY G. T. PRINSEP, D. L. S., 1921



International Boundary Line
Boundary Reference Marks (Bronze posts 6 in. high)
Boundary Turning Points (not marked)

We certify that this map is one of the quadruplicate set of thirty-six (36) maps prepared under Article V of the Treaty between Great Britain and the United States of America, signed at Washington, April 11, 1908, and that we have marked hereon the Boundary Line as reestablished by the Commissioners designated above, in accordance with the provisions of the said Treaty.
Signed January 24, 1929

J. D. Craig
His Britannic Majesty's Commissioner
E. Lester Jones
United States Commissioner