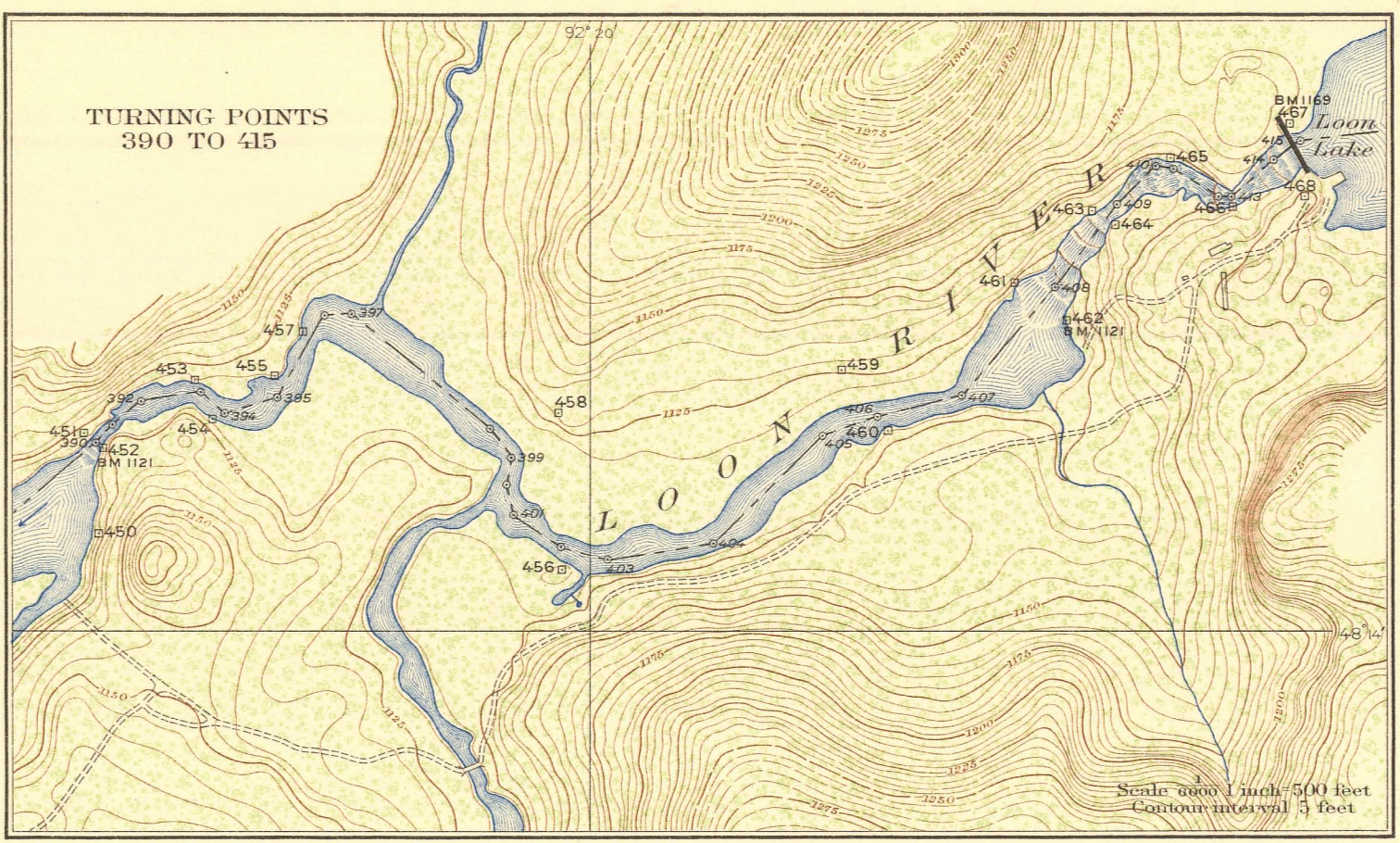
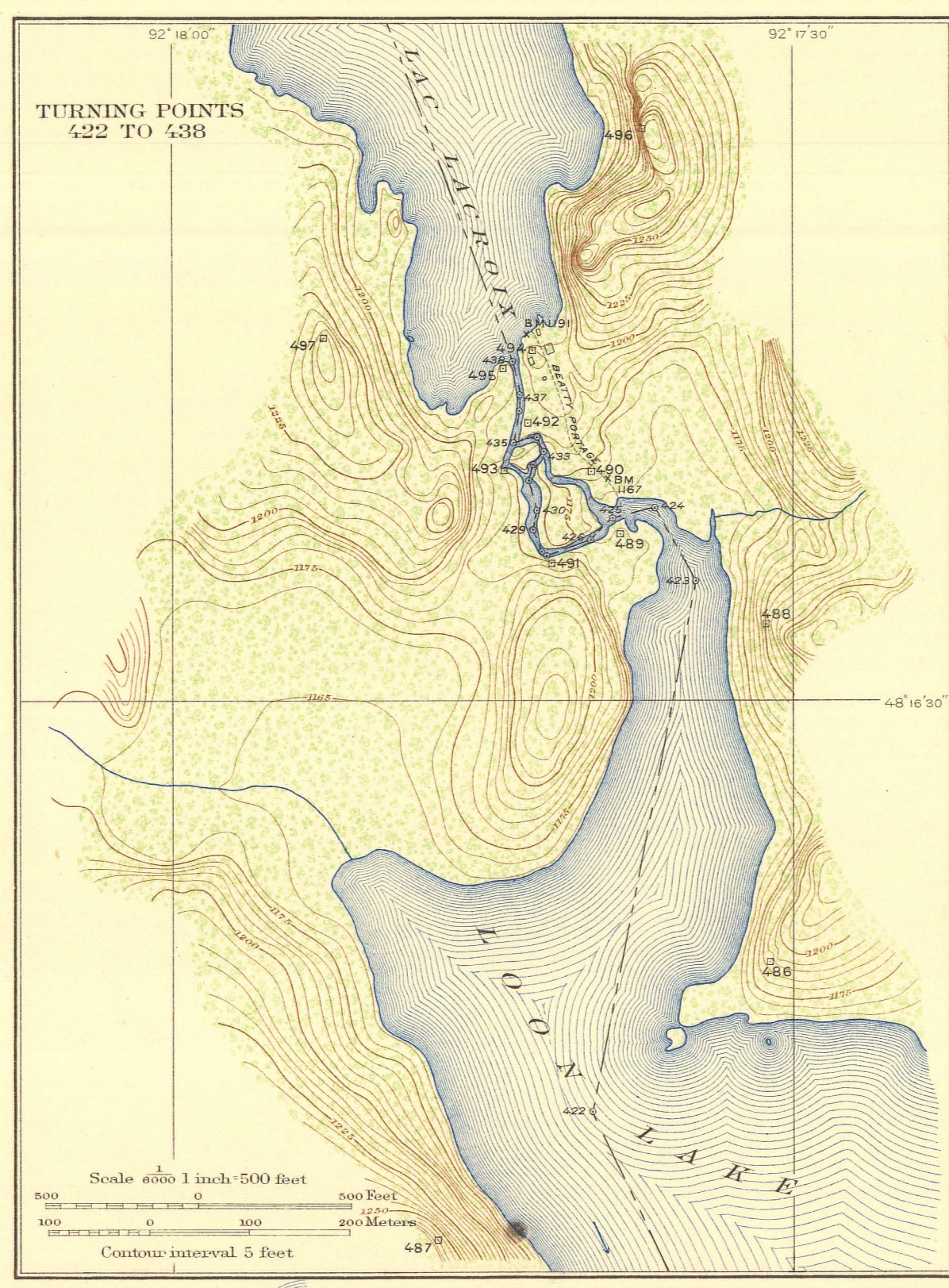
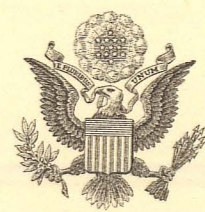


INTERNATIONAL BOUNDARY

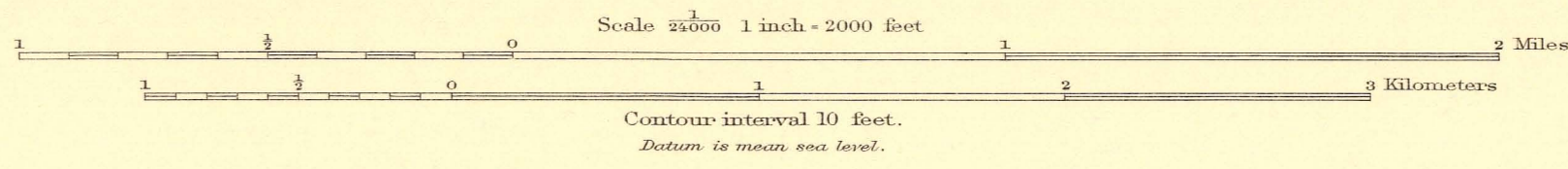
FROM THE NORTHWESTERNMOST POINT OF LAKE OF THE WOODS TO LAKE SUPERIOR

SHEET No. 16

SURVEYED UNDER THE DIRECTION OF
UNITED STATES COMMISSIONER O. R. TITTMANN, 1908-1915
E. C. BARNARD, 1915-1921
L. LESTER JONES, 1921-
HIS BRITANNIC MAJESTY'S COMMISSIONER W. F. KING, 1908-1916
J. J. McARTHUR, 1917-1924
J. D. CRAIG, 1925-
IN ACCORDANCE WITH ARTICLE V OF THE TREATY OF 1908



UNITED STATES
MINNESOTA
ST LOUIS COUNTY



FOR HIS MAJESTY
J. A. POWDER, D. L. S., ENGINEER TO THE COMMISSION
SURVEYOR IN CHARGE, J. J. McARTHUR, D. L. S., 1915
CONTROL BY F. P. STEERS, D. L. S., AND H. M. BARTON,
D. L. S., 1915
TOPOGRAPHY BY ARTHUR WILKINS, J. A. SNOW,
G. T. PRINSEP, AND G. E. WALK, 1915
MONUMENTING BY J. M. SHEPPARD AND J. M. PERRIER,
1915
INSPECTION BY G. T. PRINSEP, D. L. S., 1921

FOR THE UNITED STATES
JAMES H. VAN WAGENEN, ENGINEER TO THE COMMISSION
INSPECTION BY JESSE HILL, 1921
MATHEMATICIAN, R. W. ASHUNUN
CARTOGRAPHER, EDWARD RAUSCH

Timbered Areas
Deciduous Evergreen
International Boundary Line
Boundary Reference Marks (Bench marks, 8 in. high)
Boundary Turning Points (not marked)

We certify that this map is one of the quadruplicate set of thirty-six (36) maps prepared under Article V of the Treaty between Great Britain and the United States of America, signed at Washington, April 11, 1908, and that we have marked hereon the Boundary Line as reestablished by the Commissioners designated above, in accordance with the provisions of the said Treaty.

Signed October 1, 1928
J. D. Craig, His Britannic Majesty's Commissioner
L. Lester Jones, United States Commissioner