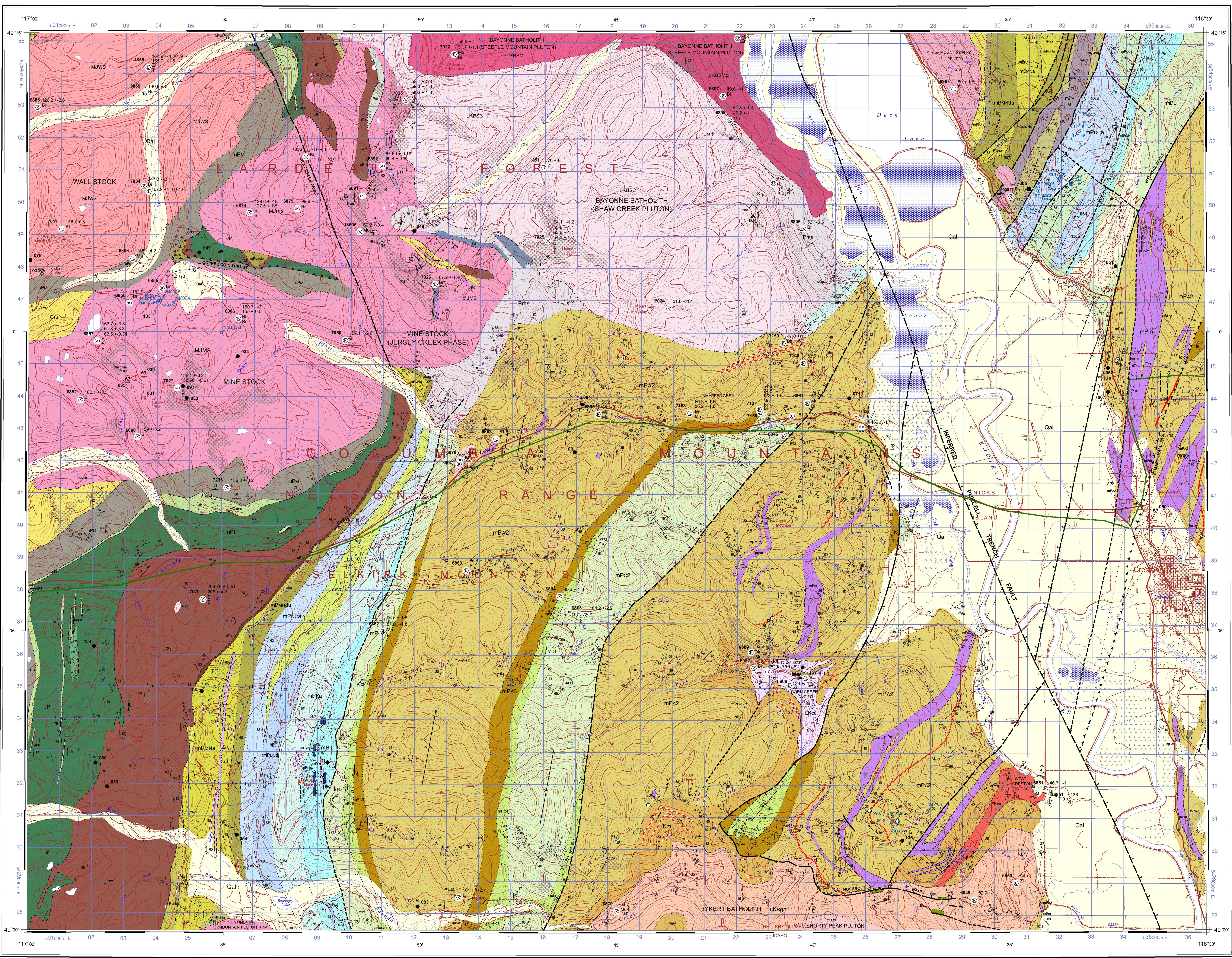
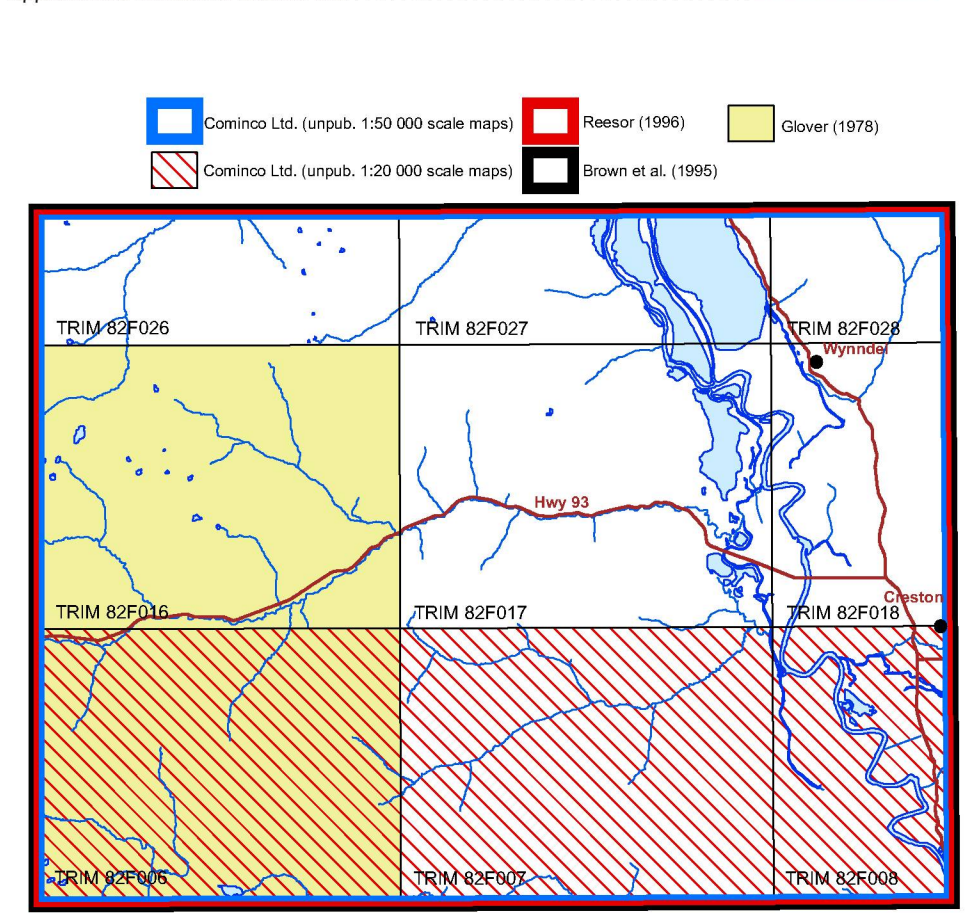
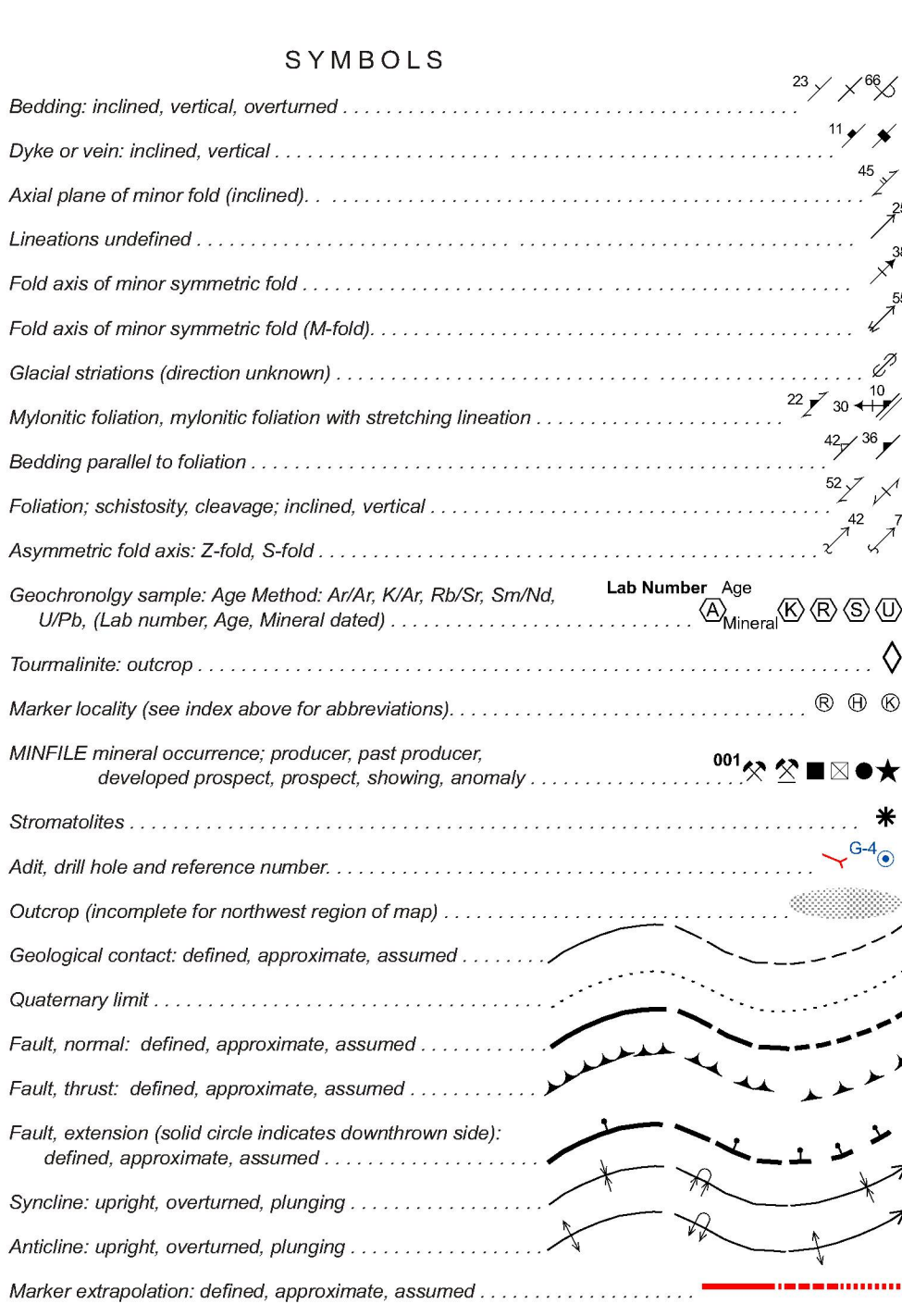
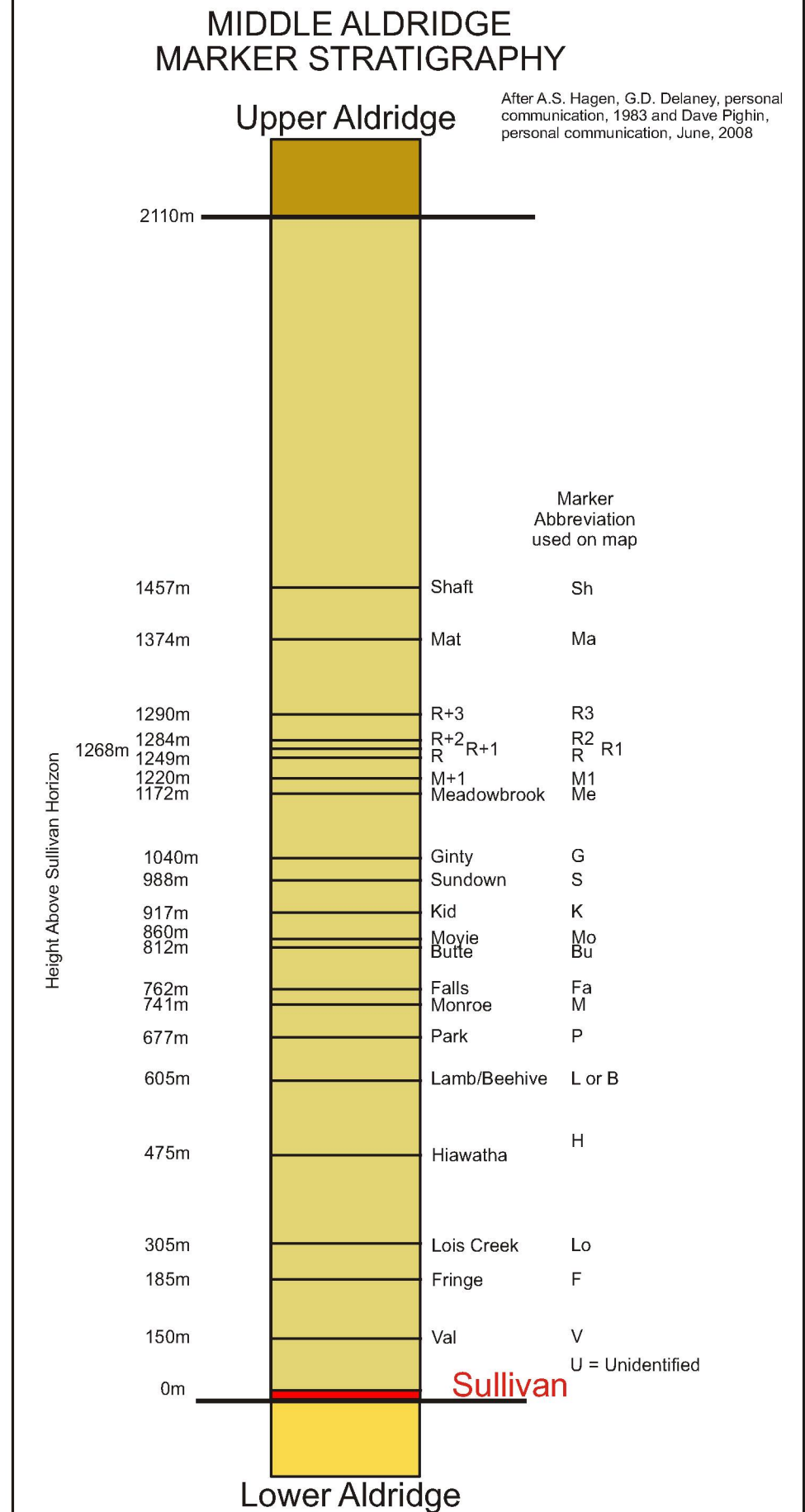


REFERENCES

Archibald, D.A., Krögh, T.E., Armstrong, R.L., and Ferris, K. 1996. Geology and mineral resources of the southern Kootenay and ...



Compilers: P. Glombick, D.A. Brown, and R.F. MacLeod. Geological compilation by P. Glombick, 2005; D.A. Brown, 2009-2009; and R.F. MacLeod, 2008-2009.

OPEN FILE 6152 GEOLOGY CRESTON BRITISH COLUMBIA. Scale 1:50 000/Echelle 1:50 000. Includes projection information and a scale bar.

Digital base map from data compiled by Geomatics Canada, modified by R.F. MacLeod. Magnetic declination 2010, 15°51' E, decreasing 12" annually.

Table with 4 columns: Unit Code, Name, Lithology, and Notes. Lists geological units like mE1, mE2, mE3, etc., with their descriptions.

LEGEND. A detailed legend for the geological map, including layered rocks, Quaternary, Lower Cambrian and Upper Proterozoic (Madman), Three Sisters Formation, Proterozoic, and Aldridge Formation. Includes a table for the MNEFLY TABLE and a table for Lithology.

OPEN FILE DOSSIER PUBLIC 6152. Open file documents are available in French through the GSC's public portal.