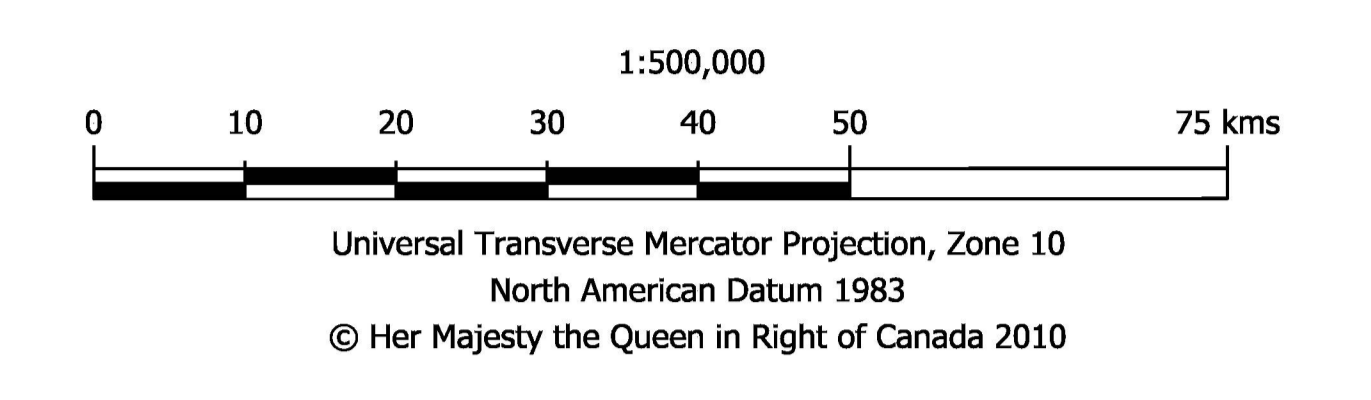
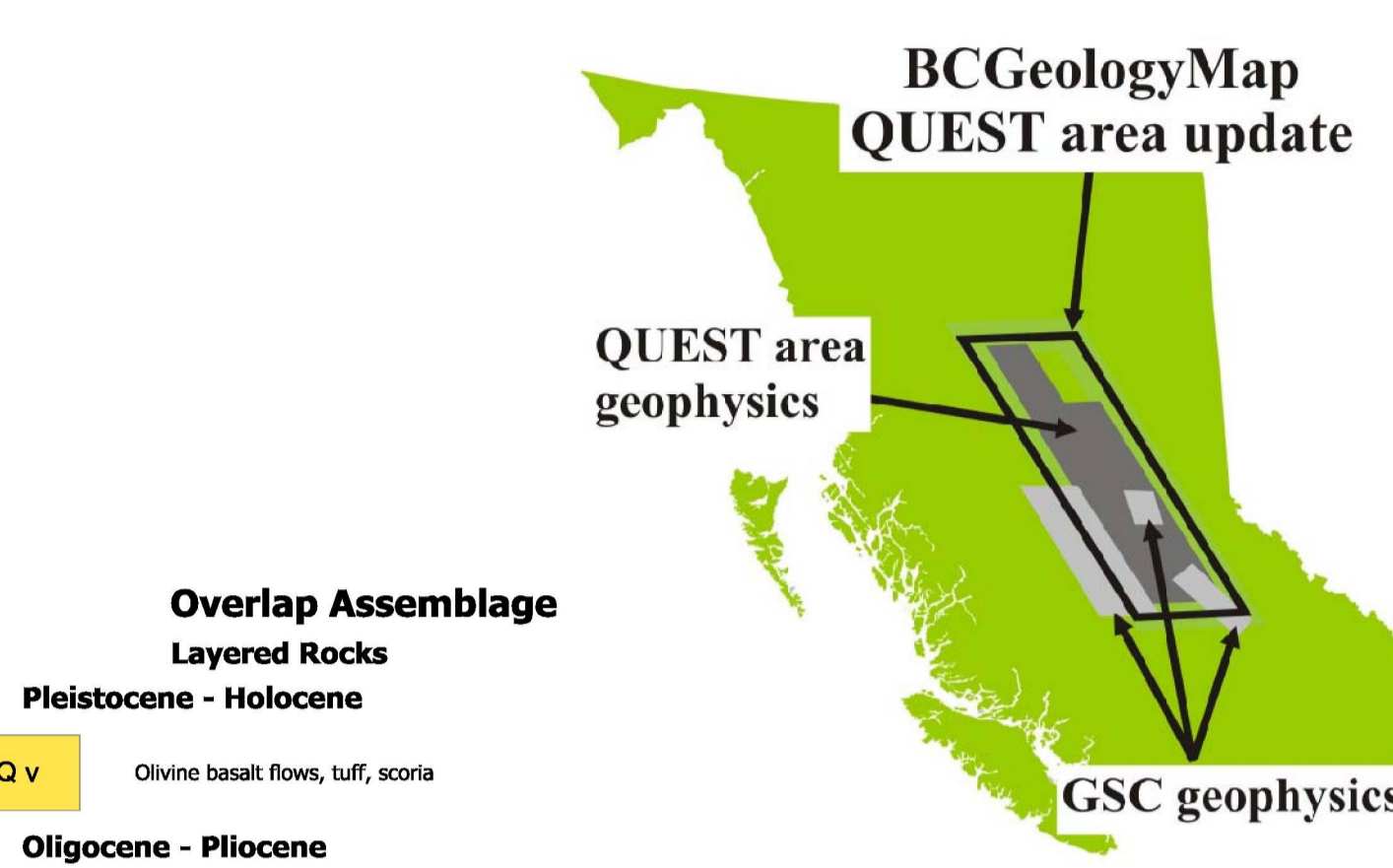
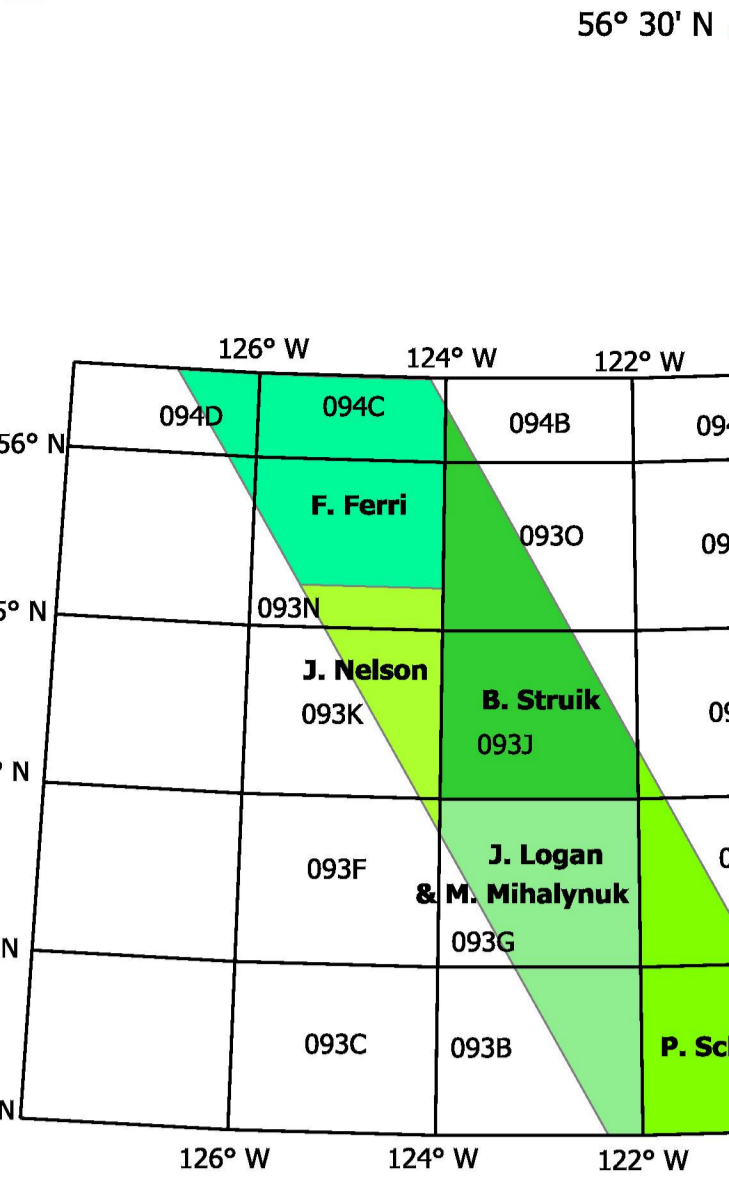


British Columbia Geological Survey Geoscience Map 2010-1
Geoscience BC Report 2010-5
Geological Survey of Canada Open File 6476
Bedrock Geology of the QUEST map area, central British Columbia

Compilation by J.M. Logan, P. Schiarizza, L.C. Struik, C. Barnett, J.L. Nelson, P. Kowalczyk, F. Ferri, M.G. Mihalynuk, M.D. Thomas, P. Gammon, R. Lett, W. Jackaman and T. Ferbey



ACKNOWLEDGEMENTS
The bedrock geology map of the QUEST area is the result of a co-operative project between Geoscience BC, the Geological Survey of Canada (GSC) and the British Columbia Geological Survey (BCGS)...



Overlap Assemblage
Layered Rocks
Pleistocene - Holocene
Q v Olivine basalt flows, tuff, scoria

Oligocene - Pliocene
Chilcoot Group
MP Cv Alkaline olivine basalt and coarse sedimentary rocks
Australian Creek, Fraser Hand and Cromwell formations

Intrusive Rocks
Tertiary (65-1.6 Ma)
T gr Biotite granite, high level feldspar porphyritic intrusions...

Stikine Terrane
Lower-Middle Jurassic
Hazelton Group
HJ Hs Argillite, cherty tuff, limestone, sandstone and siltstone

Upper Triassic
Tasika Group
UT Ts Pyroxene gabbro, sandstone, tuff and minor limestone

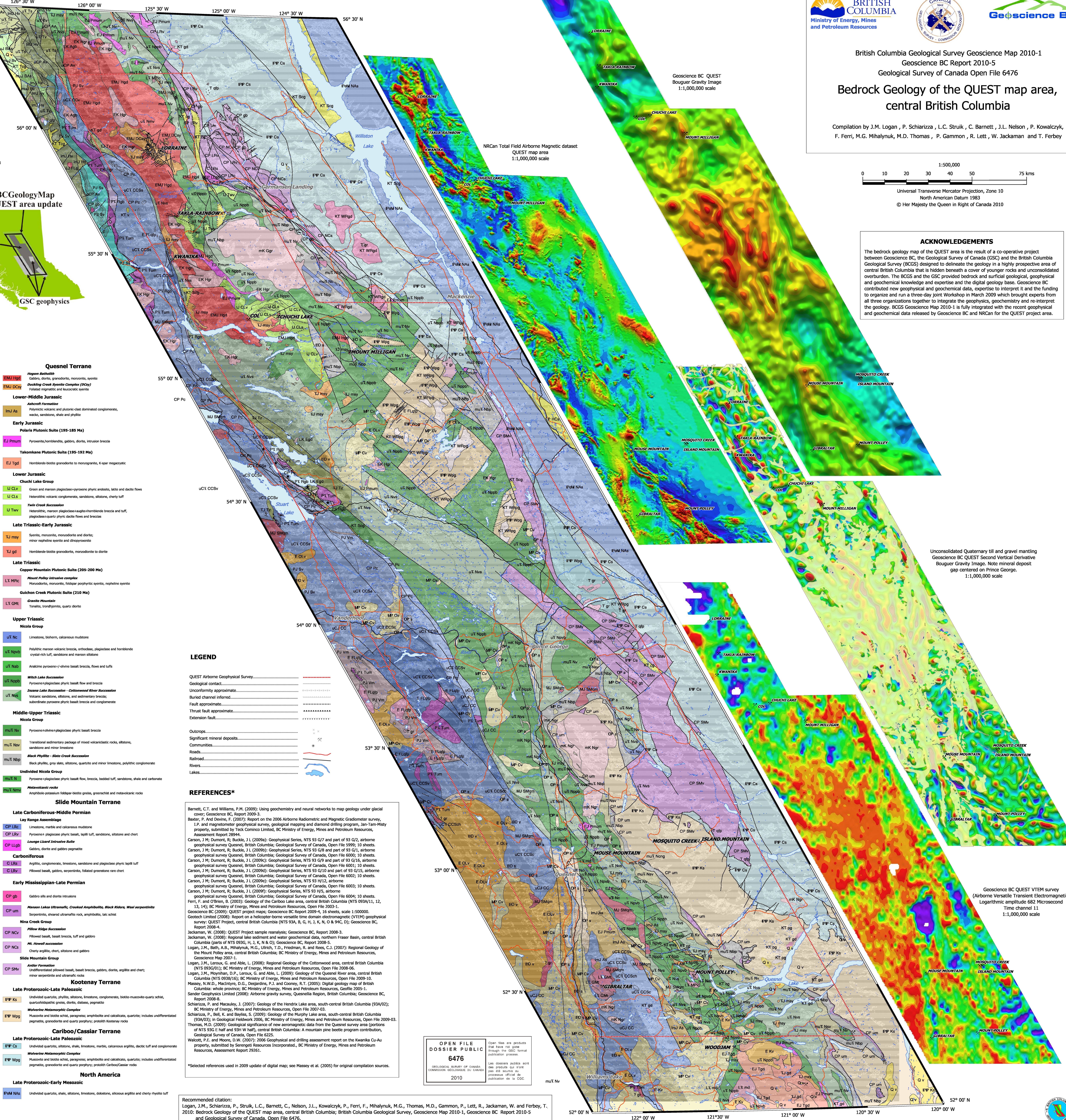
Cache Creek Terrane
Upper Triassic-Lower Jurassic
Fraserside Succession
FJ Sv Cherty schist, fragmental mafic and felsic metavolcanic rocks, chert

Permanian-Lower Jurassic
Stikine Assemblage
PJ Sv Chlorite schist, fragmental mafic and felsic metavolcanic rocks, chert

Triassic
Kootenay Terrane
Kt Sv Basaltic metaterratic rocks

Upper Carboniferous-Triassic
Sawtooth Succession
UCT Cs Ribbon chert (s), siltstone, greywacke, slate (s) and limestone (s)

Carboniferous-Permian
Page Succession
CP Pr Carbonate mudstone, biotitic limestone, minor chert, basalt and volcaniclastic rocks



Quesnel Terrane
Hogon Basaltic
HBM Hgt Gabbro, diorite, granodiorite, monzonite, syenite

Lower-Middle Jurassic
Aulohorn Formation
LmJ As Polymictic volcanic and plutonic-clast dominated conglomerate, wacke, sandstone, shale and phyllite

Early Jurassic
Polaris Plutonic Suite (195-185 Ma)
EJ Pm Pyroxene-hornblende, gabbro, diorite, intrusion breccia

Lower Triassic
Chuchi Lake Group
LJ CLV Green and mafic mafic gabbroic pyroxene phyllite and dacite flows

Late Triassic-Early Jurassic
LJ MSy Syenite, monzonite, monodiorite and diorite; minor nepheline syenite and diorite

Late Triassic
Copper Mountain Plutonic Suite (205-200 Ma)
LJ MPP Hornblende, monzonite, feldspar porphyritic syenite, nepheline syenite

Upper Triassic
Nicola Group
UT Nc Limestone, biotite, calcareous mudstone

Middle-Upper Triassic
Nicola Group
MUT Nv Pyroxene-hornblende-plagioclase phyllite basalt breccia

Late Carboniferous-Middle Permian
Lay Range Assemblage
LCP Lr Limestone, marble and calcareous mudstone

Carboniferous
C Lrs Argillite, conglomerate, limestone, sandstone and plagioclase phyllite tuff

Early Mississippian-Late Permian
CP Cv Gabbro silt and diorite intrusions

Late Proterozoic-Late Paleozoic
LPP Cs Undifferentiated allowed basalt, basalt breccia, gabbro, diorite, argillite and chert; minor serpenite and ultramafic rocks

LEGEND
QUEST Airborne Geophysical Survey...
Geological contact...
Unconformity approximate...
Buried channel inferred...
Fault approximate...
Thrust fault approximate...
Extension fault...

REFERENCES*
Barnett, C.T. and Williams, P.M. (2009). Using geochemistry and neural networks to map geology under glacial cover...
Baxter, P. and Devine, F. (2007). Report on the 2006 Airborne Radiometric and Magnetic Gradiometer Survey...

OPEN FILE DOSSIER PUBLIC 6476
GEOLOGICAL SURVEY OF CANADA COMMISSION GEOLOGIQUE DU CANADA 2010

Recommended citation: Logan, J.M., Schiarizza, P., Struik, L.C., Barnett, C., Nelson, J.L., Kowalczyk, P., Ferri, F., Mihalynuk, M.G., Thomas, M.D., Gammon, P., Lett, R., Jackaman, W. and Ferbey, T. 2010: Bedrock Geology of the QUEST map area, central British Columbia; British Columbia Geological Survey, Geoscience Map 2010-1, Geoscience BC Report 2010-5 and Geological Survey of Canada, Open File 6476.