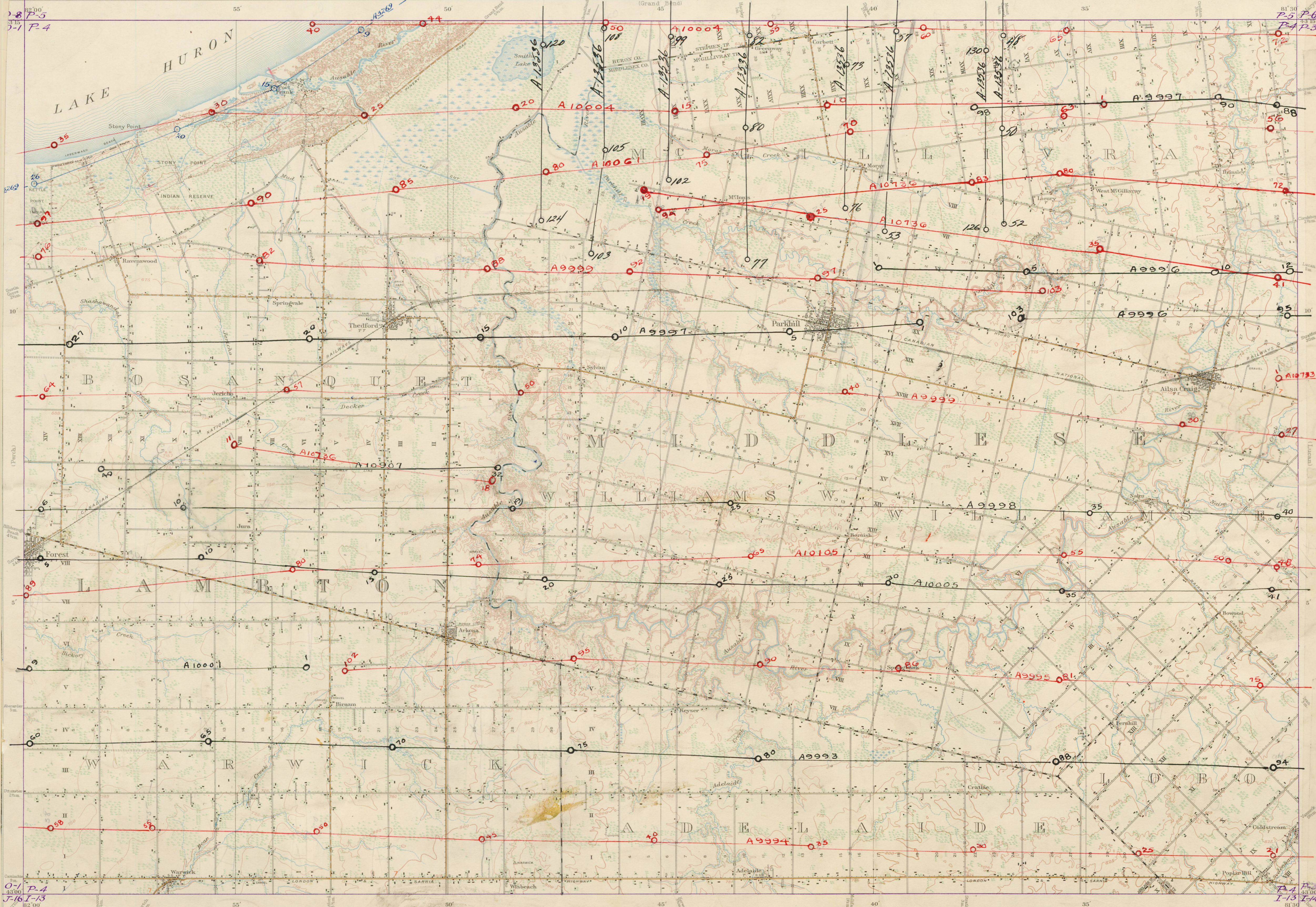


TOPOGRAPHIC MAP

ONTARIO  
PARKHILL SHEET

CANADA 1 INCH TO 1 MILE



P-5  
P-4

P-6  
P-3

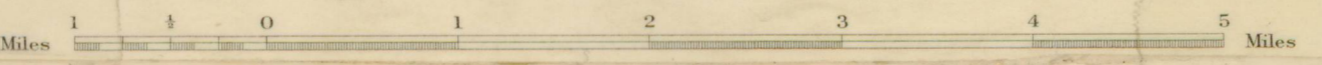
P-4  
T-13

P-4  
T-14

Published by the Geographical Section, General Staff  
Department of National Defence 1928

Provincial Boundary  
County  
Township  
Railways  
Single Track  
Double  
Railway on road

Scale 1 inch to 1 Mile



Railway Station  
Post Office  
Church  
Centre of cross to centre of spire  
Saw mill  
Mill  
Arist or Flour mill

ONTARIO 81°30'-43°00'  
PARKHILL SHEET  
No 52

- A 3269 (9-26)
- ..9993 (60-94)
- ..9994 (21-58)
- ..9995 (75-102)
- ..9996 (1-12)
- ..9997 (1-27)
- (88-98)
- ..9998 (6-40)
- ..9999 (27-64)
- (76-103)
- ..10001 (1-9)
- ..10004 (1-35)
- (40-72)
- ..10005 (5-41)
- ..10061 (56-97)
- ..10105 (48-89)
- ..10907 (32-40)
- ..10733 (1)
- ..10736 (11-41)
- (72-94)
- GRAND BEND
- AIRPORT
- 1952
- A-13536
- (48-57)(73-82)
- (99-108)(120-124)
- (126-130)
- 125 OBLIQUE.

A'  
40 P/4