

75°00'

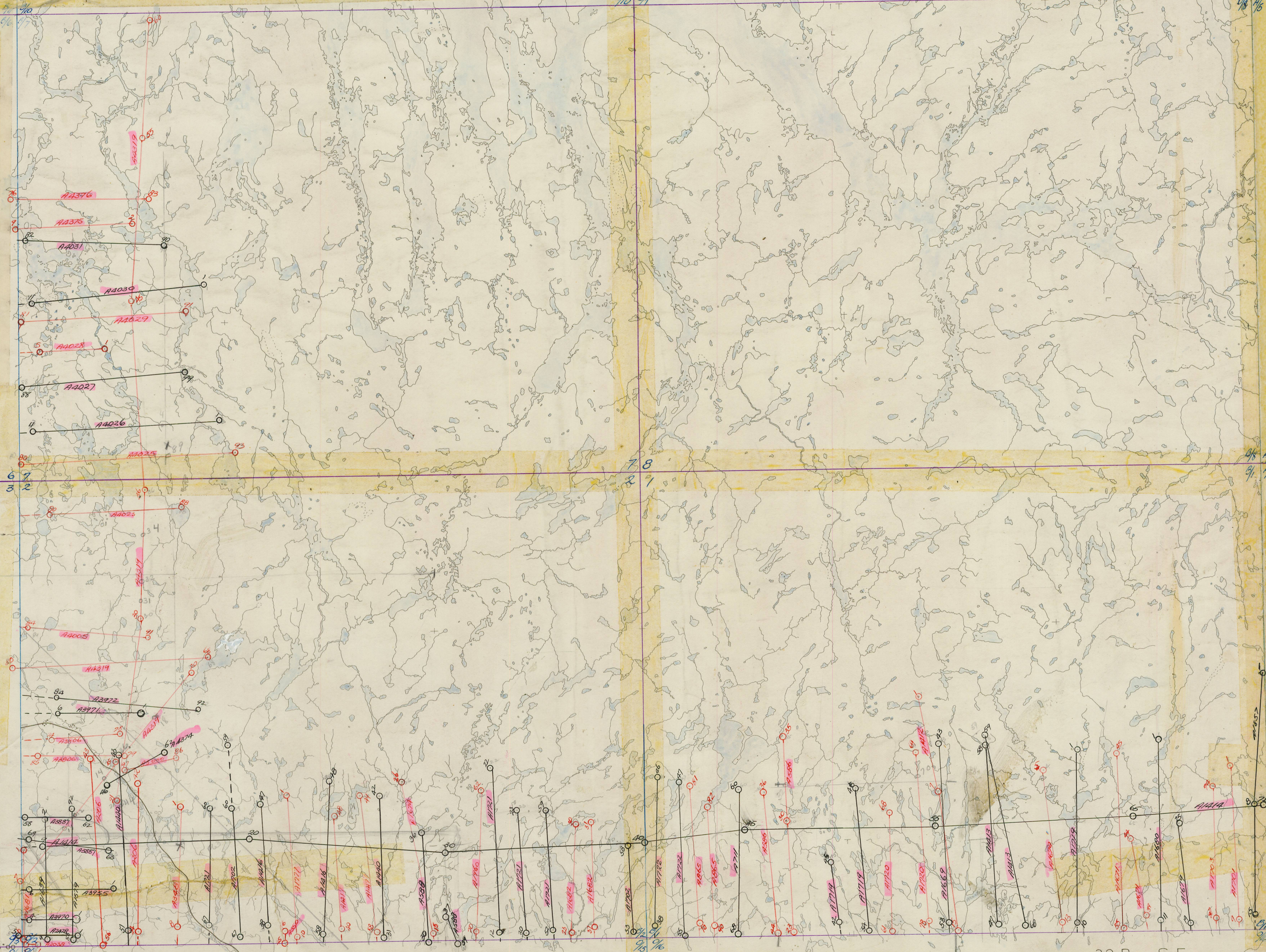
74°30'

74°00'

48°30'

48°30'

- A4025 (80-93)
- A4026 (1-11)
- A4027 (88-99)
- A4028 (1-5)
- A4029 (31-91)
- A4030 (1-11)
- A4031 (82-90)
- A4319 (37-60)
- A4375 (1-9)
- A4376 (76-83)



- A206 (54-56)
- A348 (1-8)
- A350 (46-46)
- A588 (30-39)
- A1416 (38-58)
- A1417 (40-58)
- A1440 (31-51)
- A1579 (83-92)
- A1639 (2-9)
- A1674 (15-26)
- A1681 (1-6)
- A1682 (23-37)
- A1702 (53-67)
- A1721 (12-30)(32-67)
- A1777 (1-10)
- A1790 (62-70)
- A2038 (1-2)
- A2428 (1-5)
- A3000 (56-79)
- A3506 (21-32)
- A3887 (58-69)
- A3955 (1-6)
- A3970 (1-4)
- A3971 (1-6)
- A3972 (84-92)
- A4005 (84-91)
- A4018 (80-81)
- A4319 (7-36)(63-8)
- A4374 (46-52)

- A586 (23-44) ✓
- A711 (60-68) ✓
- A865 (70-90) ✓
- A1412 (1-15) ✓
- A1413 (47-68) ✓
- A1414 (21-72) ✓
- A1669 (23-53) ✓
- A1670 (1-4)(5-13) ✓
- A1671 (39-55) ✓
- A1679 (19-25) ✓
- A1680 (1-11) ✓
- A1701 (1-9) ✓
- A1703 (57-94) ✓
- A1719 (1-10)(42-54) ✓
- A1720 (61-78) ✓
- A1722 (38-55) ✓
- A1857 (1-15) ✓

St. A  
 32.B  
 1,2,7,8

Gouin Reservoir - 32 B - S.E.

75°00'

74°30'

74°00'

48°00'

48°00'

32 B/6