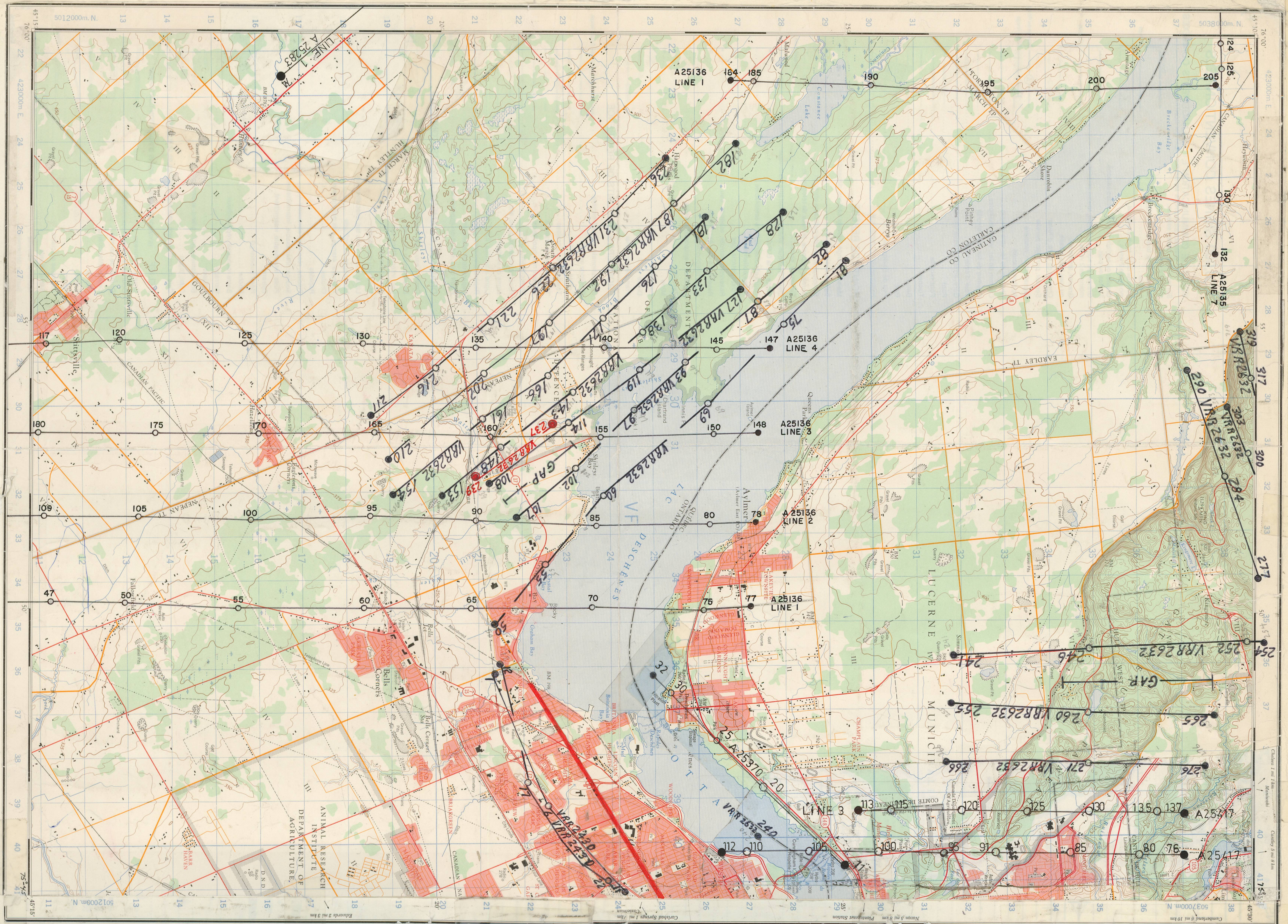


R.C.A.F. 27/2/65 3,950' ASL
 6" Lens 1:6000 WINTER 65
 VRR 2632 277-290(300-303) 317-319
 240-276 4225' ASL 1:7,400
 50-236 2,600' ASL 1:4900
 237-239 7425' ASL 1:14,400
 13/5/63 3,200' ASL 1:6000
 VRR 2430 1-22



1979-JUNE VARIOUS ASL.
 6" LENS 1:12,000
 A25135 (124-132)-6,750' ASL.
 A25136 (47-109)-6,800' ASL.
 (117-180)-6,800' ASL.
 (184-205)-6,750' ASL.

NOTE: 80% FORWARD OVERLAP

CARLING AVE. TEST LINE

A25135 (1-10)
 A25136 (1-13)

1979 JULY 10,350' ASL
 6" LENS 1:20,000

A25283 (74)

1979-NOV. 3,250' ASL.
 6" LENS 1:6,000
 A25370 (11-32)

TEST LINE CARLING AVE.
 A25370 (1-10)

1980 MAY 3,375' ASL
 6" LENS 1:6,000
 A25417 (76-137) - 80%
 FORWARD OVERLAP

"V"
 31-G/5W