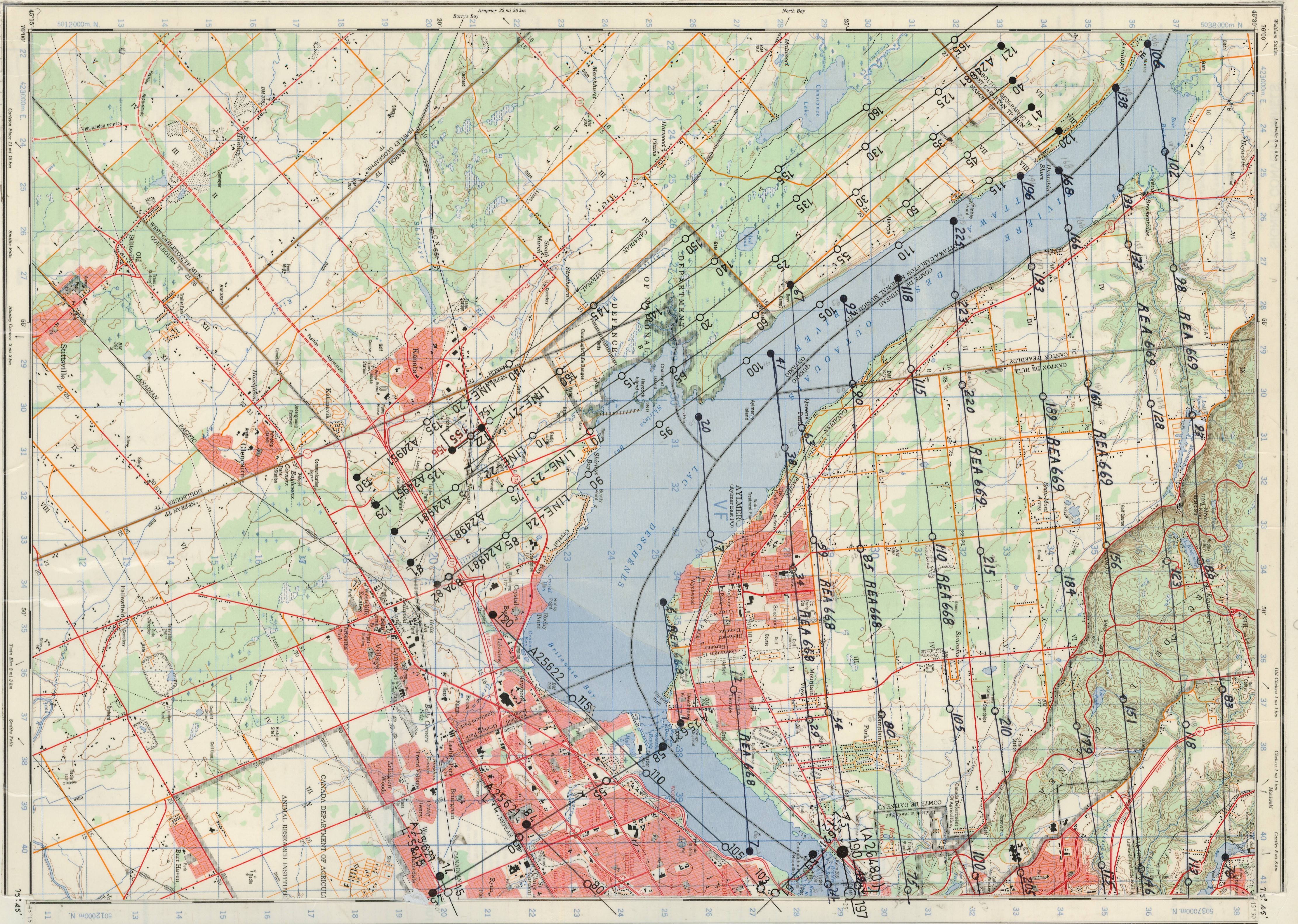


1952 OCT 3700' ASL
 11.5cm Lens 1:7000
 REA 668 1-20 24-41 49-67
 75-93 100-118
 REA 669 78-106 113-138
 146-168 175-196 205-225



1978 APRIL-JULY 2,750' ASL
 6" LENS 1:4,800
 A24951 (122-165)-JULY
 A24981 (1-154) (155-156)-APRIL

1980 OCT. 5,300' ASL
 6" LENS 1:10,000
 A25621 (14-15) (45-61)
 (80-84) 80% FORWARD
 A25622 (103-120) OVERLAP

1984 JUNE 1,800' ASL
 6" LENS 1:3,000
 A26480 (190-197) (295-308)-TEST STRIP
 NOTE - 80% FORWARD OVERLAP
 *A26473 (1-14)-TEST STRIP -
 *A26481 (134-147)-CARLING AVE

31-G/5W