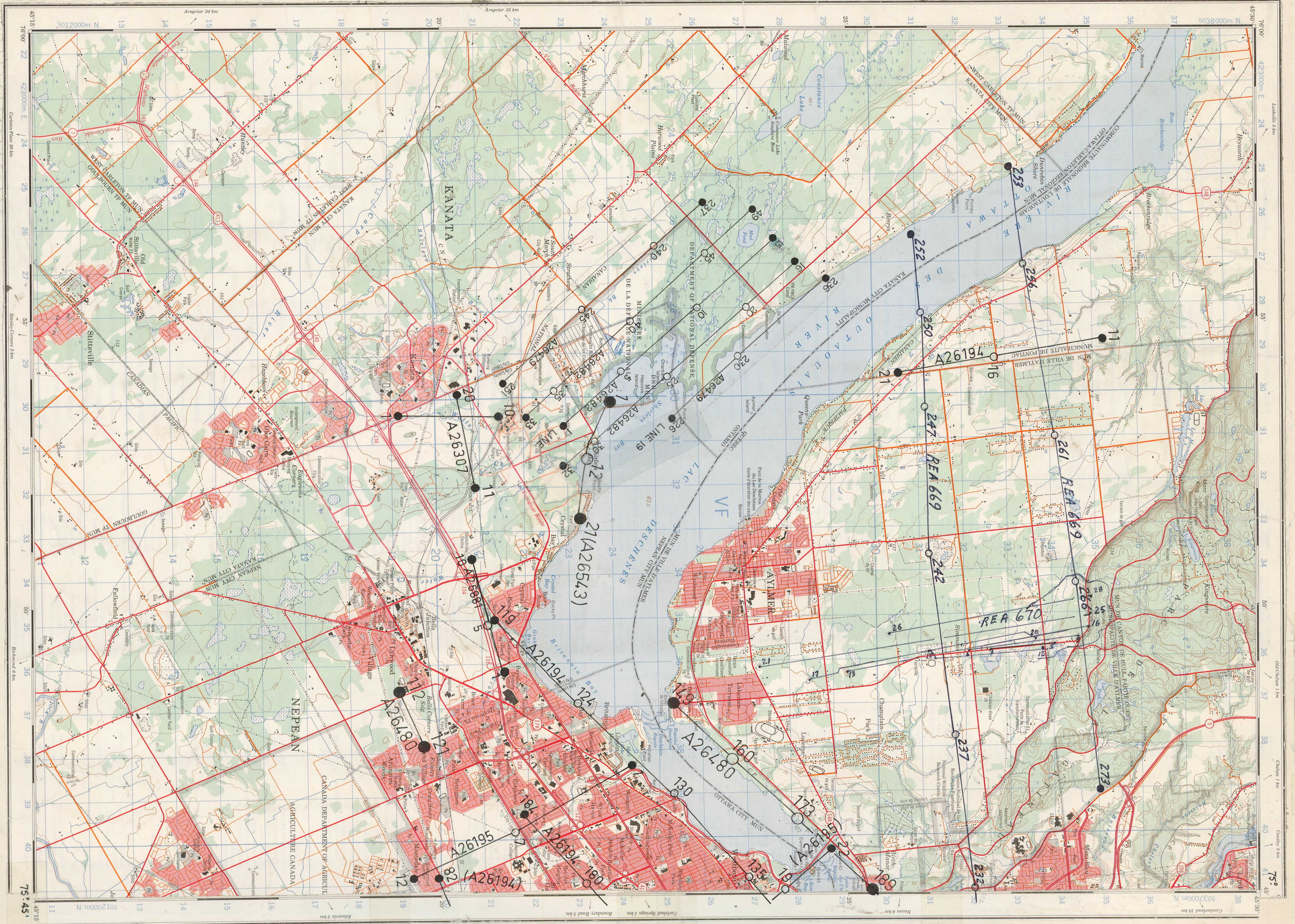


1952 OCT 3700' ASL
 11.5FM Lens 1:7000
 REA 669 232-273
 REA 670 1-28 VARIOUS SCALES
 REA 666 1-25 VARIOUS SCALES
 SAME AREA AS REA 670
 REA 665 1-22 VARIOUS SCALES
 SAME AREA AS REA 670



1982 NOV. VAR. ASL
 6" LENS 1:10,000
 A26194 (11-21) - 5,400' ASL
 (82)(119-135)(180-184)
 - 5,275' ASL
 A26195 (1-12)(19-22) -
 - 5,275' ASL
 NOTE - 80% FORWARD OVERLAP
 (METRIC CONTOURS)

1983 JULY 1,675' ASL
 6" LENS 1:2,500
 A26307 (1-20)
 1984 JUNE VAR. ASL
 6" LENS 1:5,000
 A26479 (226-251) - 2,830' ASL
 A26482 (1-49) - 2,730' ASL

1984 APRIL-JUNE 1,800' ASL
 6" LENS 1:3,000
 A26480 (112-121)(149-189) -
 JUNE
 A26543 (1-21) - APRIL -*(22-34)-TEST STRIP
 CARLING AVE.
 NOTE - 80% FORWARD OVERLAP

1984 NOV. 1,750' ASL.
 6" LENS 1:3,000
 A26881 (1-10)

(METRIC CONTOURS)

● "AA"
31-G/5W