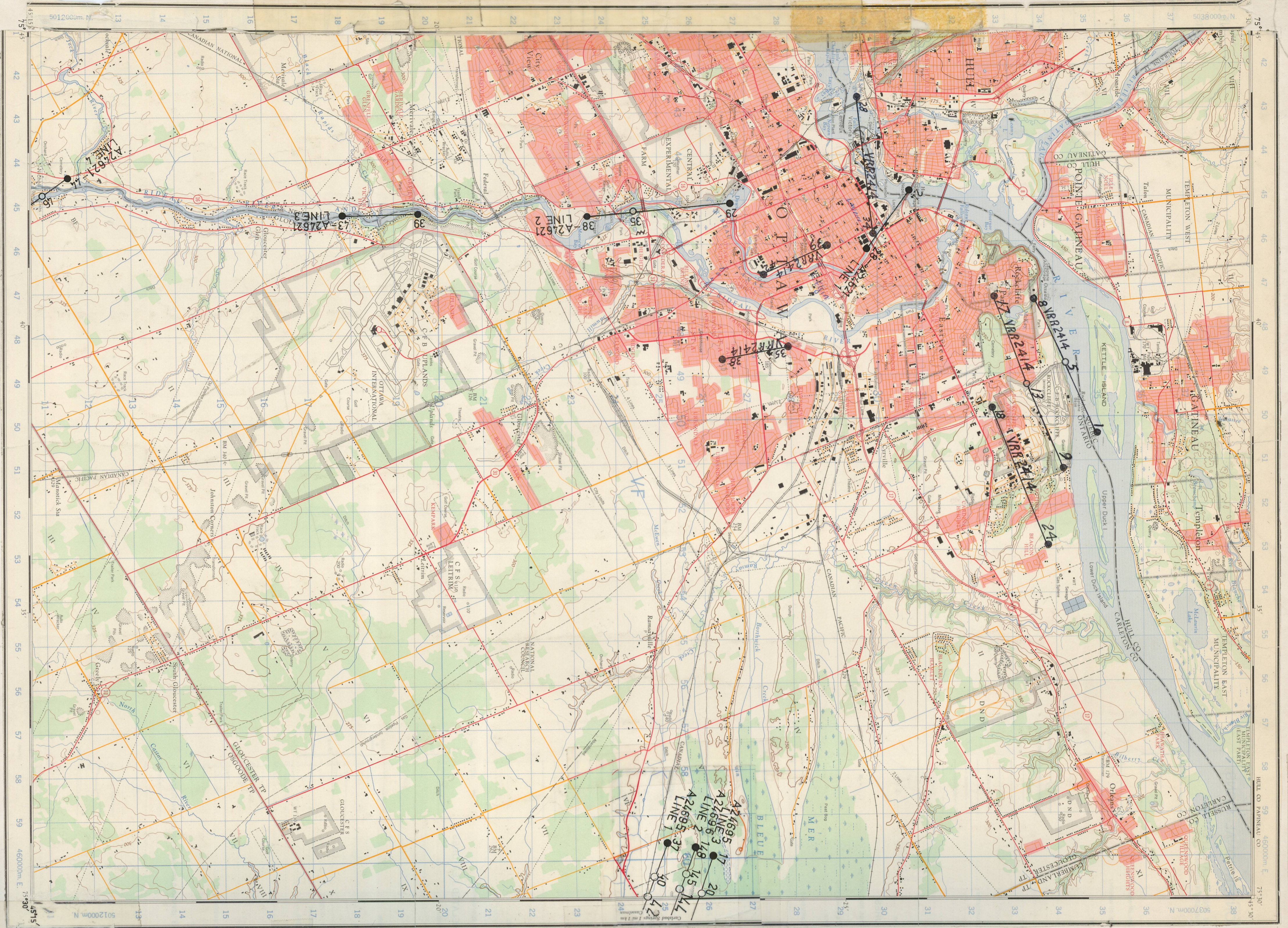


3 3,200' ASL
1:6000
-24 (28-42)



1977 APRIL VAR. ASL
6" LENS 1:4,000

A24621 (24-38) - 2,250' ASL
 (39-46) - 2,300' ASL

1977 JULY 1,750' ASL
6" LENS 1:3,000

A24695 (17-20)(37-42)
A24696 (144-148)

31-G/5E