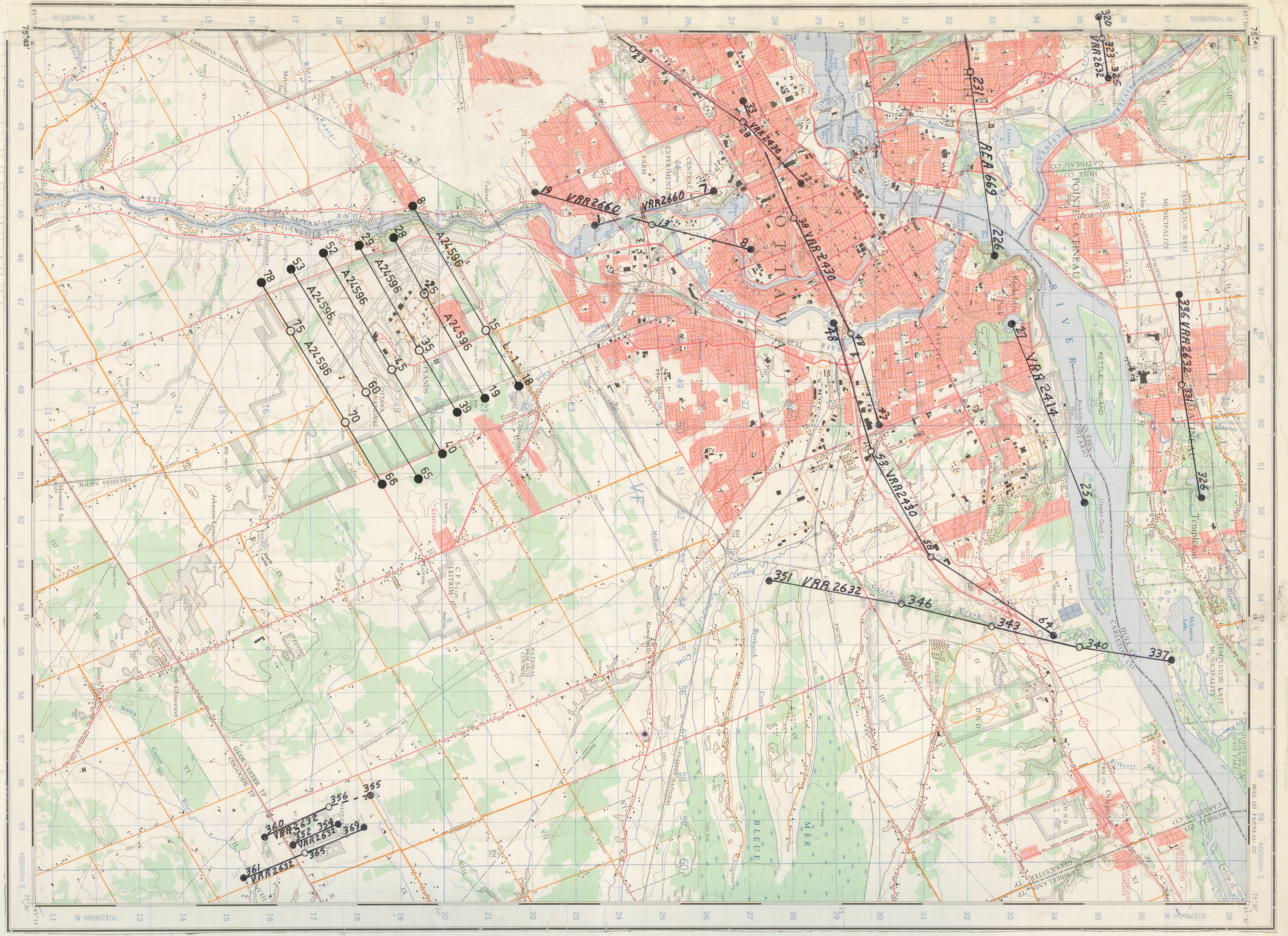


1952 OCT 3700' ASL
 1.5 CM Lens 1:7000
 REA 669 226-231
 R.C.A.F. 20/10/65
 2650' ASL 6" Lens 1:4800
 VRR 2660 1-19
 28/2/65 WINTER
 3266' ASL 1:6000
 VRR 2632 352-354
 355-369 2666' ASL 1:4800
 337-351 4250' ASL 1:8000
 27/2/65 320-336 3175' ASL 1:6000
 13/5/63 3200' ASL 1:6000
 VRR 2430 23-64 29/4/63
 VRR 2414 25-27 12,200' ASL 1:24000



1976 NOV 2,850' ASL
 6" LENS 1:5,000
 A24596 (8-78)

"S"
 31-G/5E