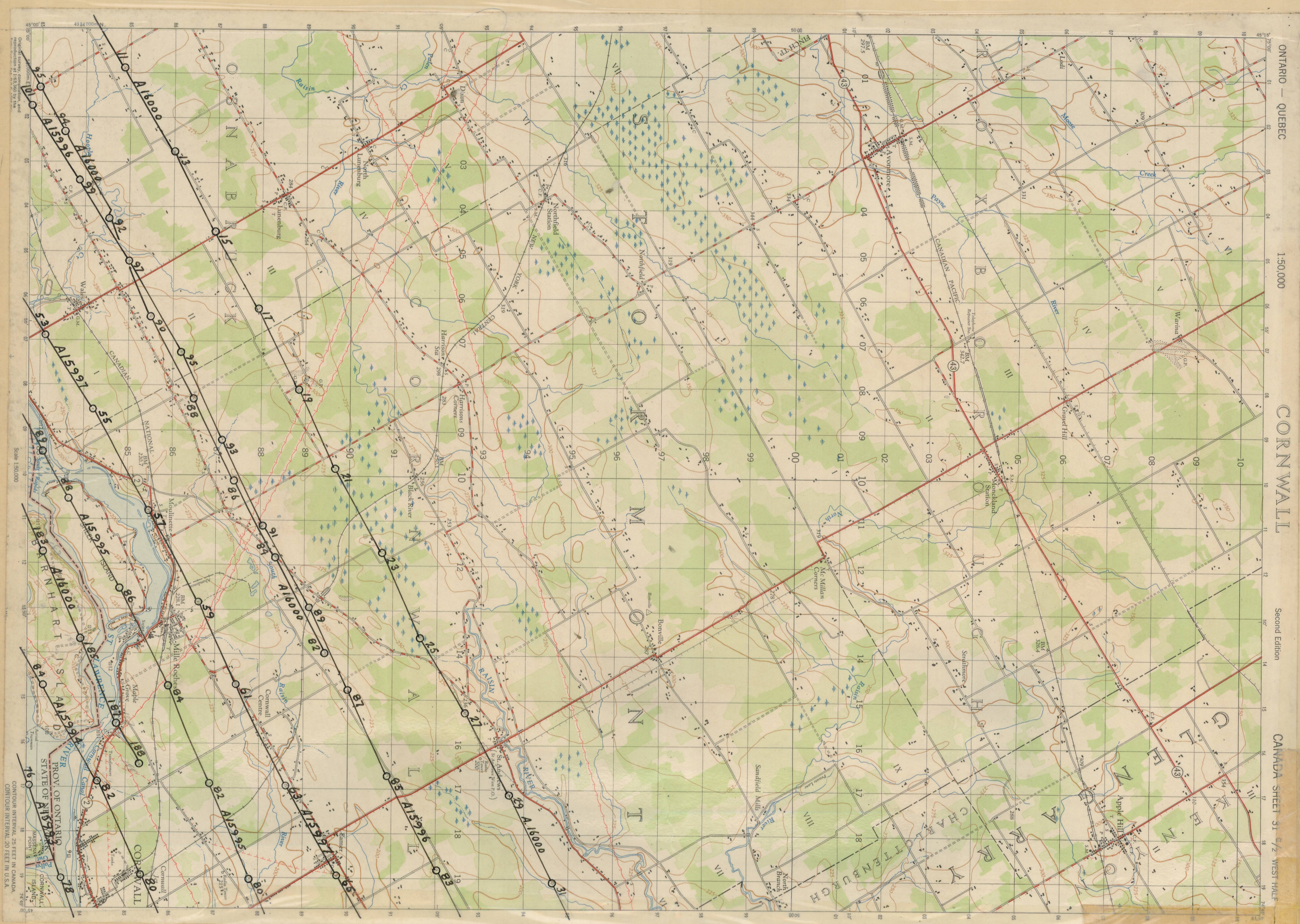


Taken at LOW WATER.
SPARTAN-1958-6 "Lens - 6200"
A.15993 (76-78)
A.15994 (80-84)
A.15995 (80-89)
A.15996 (83-101)
A.15997 (53-65)
A.16000 (11-31)(82-95)(183-188)



ONTARIO - QUEBEC
1:50,000
CORNWALL
Second Edition
CANADA SHEET S1 5/2 WEST HALF

"A"
● 31G/2 W/A