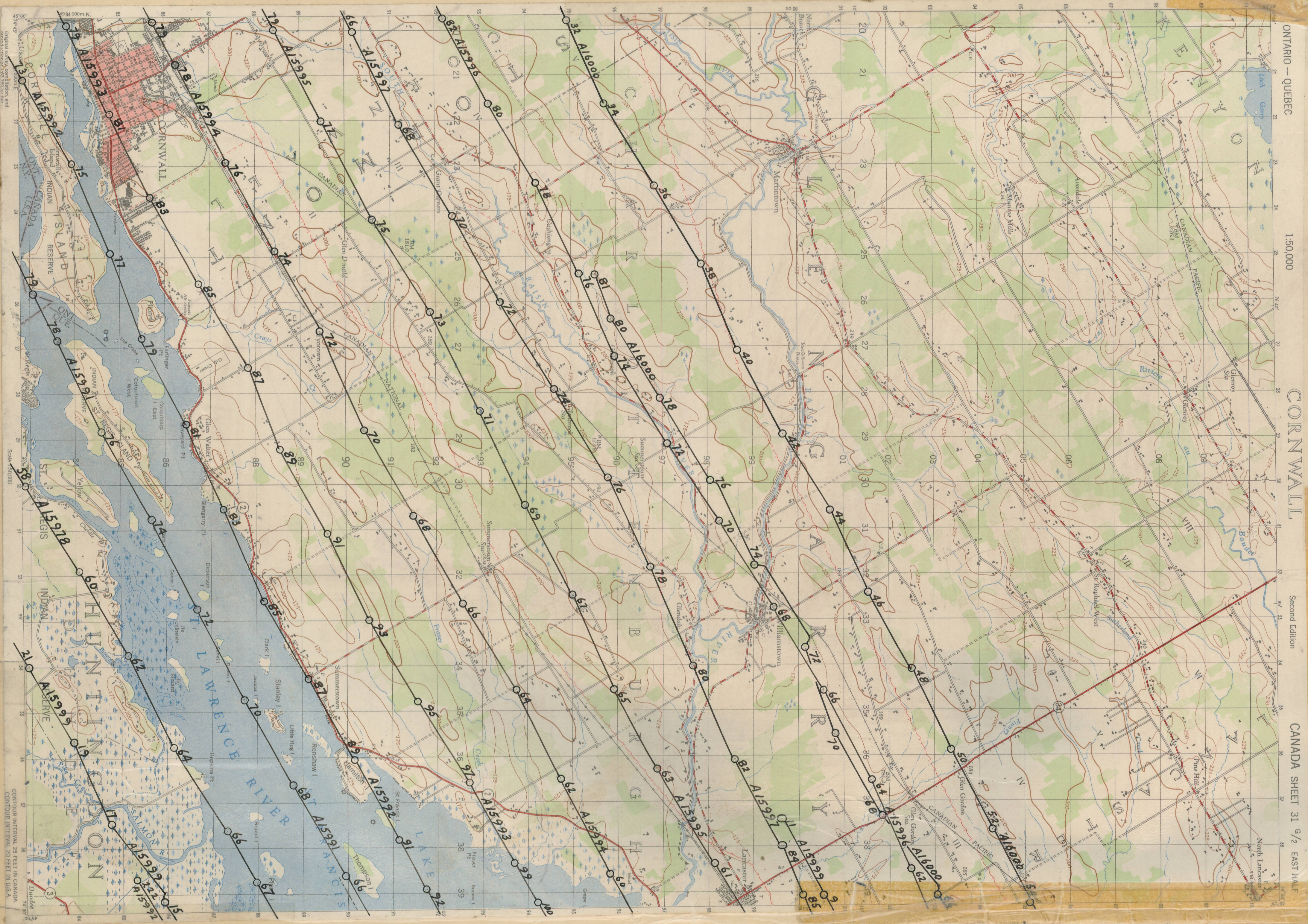


Taken at LOW WATER.
SPARTAN-1958-6" Lens.- 6200'

- A.15978 (58-67)
- A.15991 (66-79)
- A.15992 (73-92) (222)
- A.15993 (79-100)
- A.15994 (60-79)
- A.15995 (61-79)
- A.15996 (62-82)
- A.15997 (66-85)
- A.15999 (9-11) (15-21)
- A.16000 (32-54) (66-81)



ONTARIO — QUEBEC

1:50,000

CORNWALL

Second Edition

CANADA SHEET 31 9/2 EAST HALF

"A"

31G/2E1/2