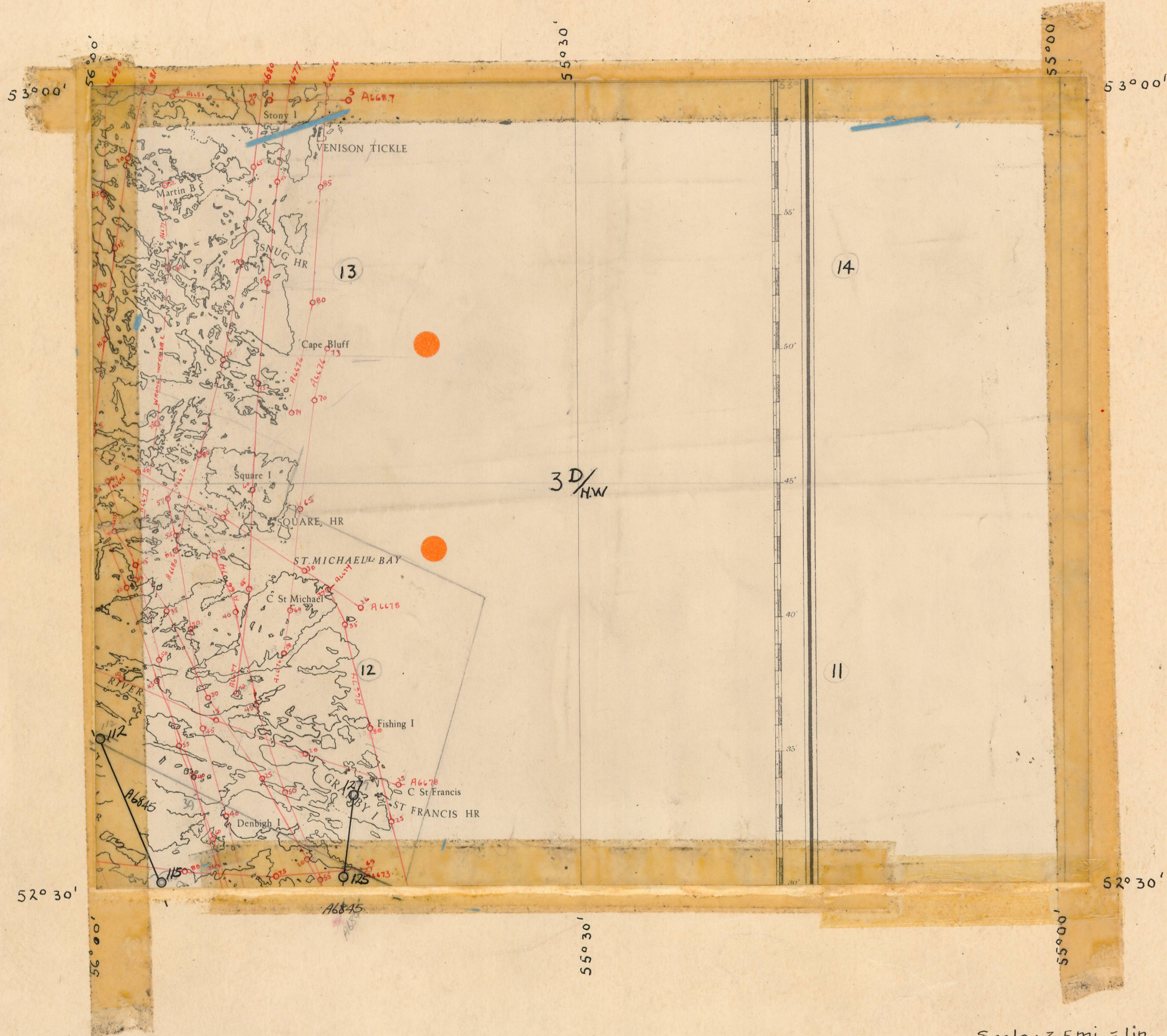


3D/13
 A6676 (67-90)
 6677 (41-59) (73-82)
 6680 (61-85)
 6681 (5-24) (92-99)
 6687 (1-5)
 6690 (31-90)

3D/12
 A6670 (35-55)
 " 6673 (69-84)
 " 6674 (22-55)
 " 6675 (19-62)
 " 6676 (36-66)
 " 6677 (60-72)
 " 6678 (9-40)
 " 6680 (82-85)
 " 6845 (112-115) (125-127)



1939
 15,000'
 8" lens

"A"
 3-D
 12-13

Scale: 3.5 mi. = 1 in.