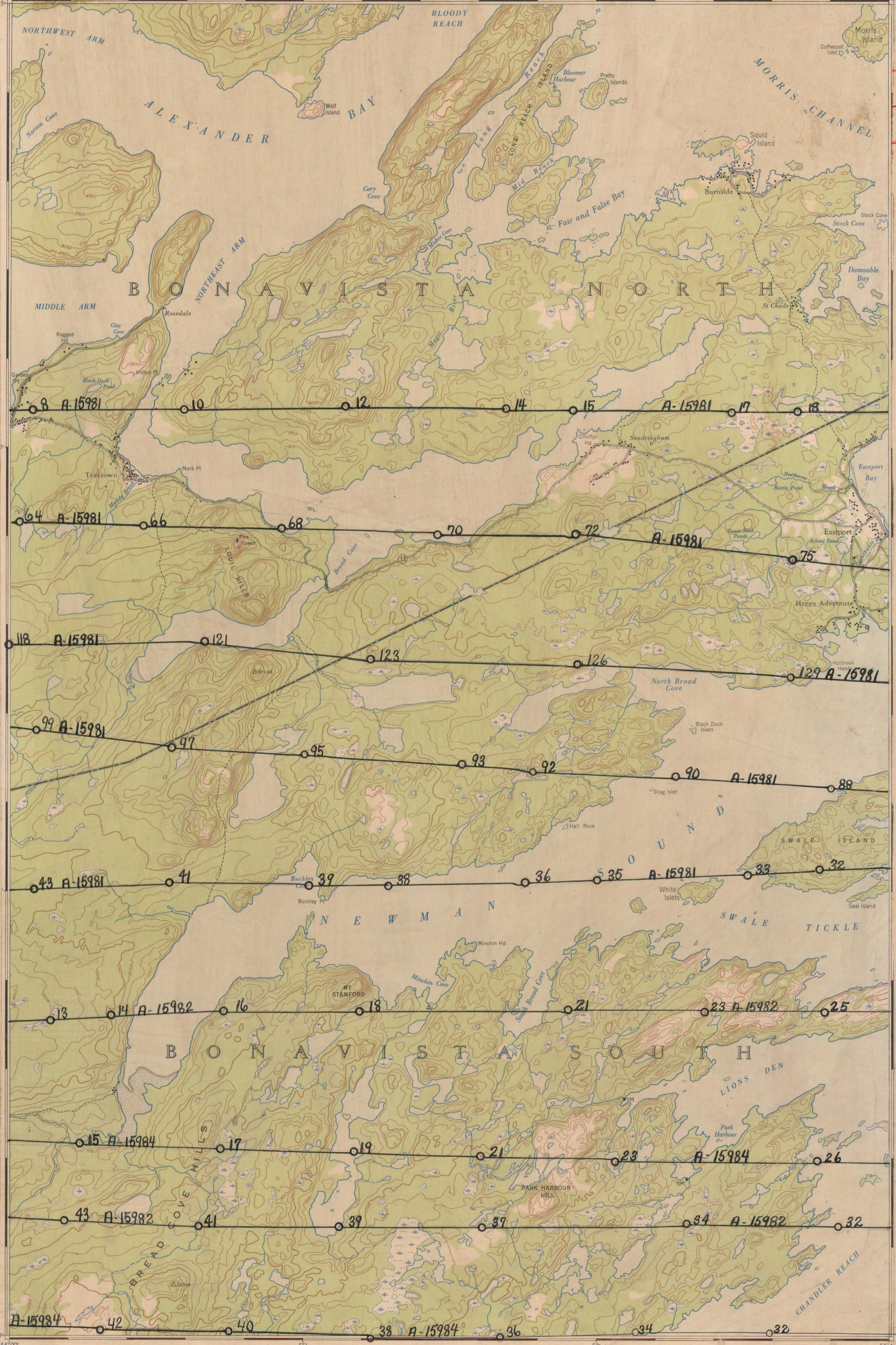


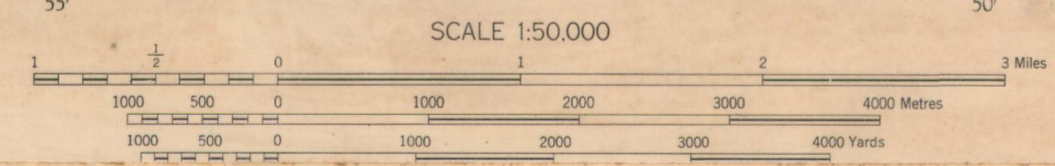
48°45'

P.S.C. 374/58
 1958 8500' A.S.L.
 SCALE - 1"=1320' 6" LENS

A-15981 - (8-18)(32-43)(64-75)(88-99)(118-129)
 A-15982 - (13-25)(32-43)
 A-15984 - (15-26)(30-43)



Surveyed by the Topographical Survey in 1949.
 Contoured by the Topographical Survey in 1950, from air photographs taken in 1948.
 Lithographed and printed by the Army Survey Est., R.C.E., Department of National Defence, 1953.
 The general public may obtain copies of this map from the Map Distribution Office, Dept. of Mines and Technical Surveys, Ottawa, at 25 cents per copy.



CONTOUR INTERVAL 50 FEET
 All Elevations in Feet above Mean Sea

2 C/12 "A" WEST HALF