

**REFERENCES**

Reesor, J.E. (Compiler)  
1996: Geology, Kootenay Lake, British Columbia, Geological Survey of Canada, Map 1864A, scale 1:100,000.

Reesor, J.E.  
1973: Geology of the Landeau map-area, east-half, British Columbia, Geological Survey of Canada, Memoir 369, 129p.

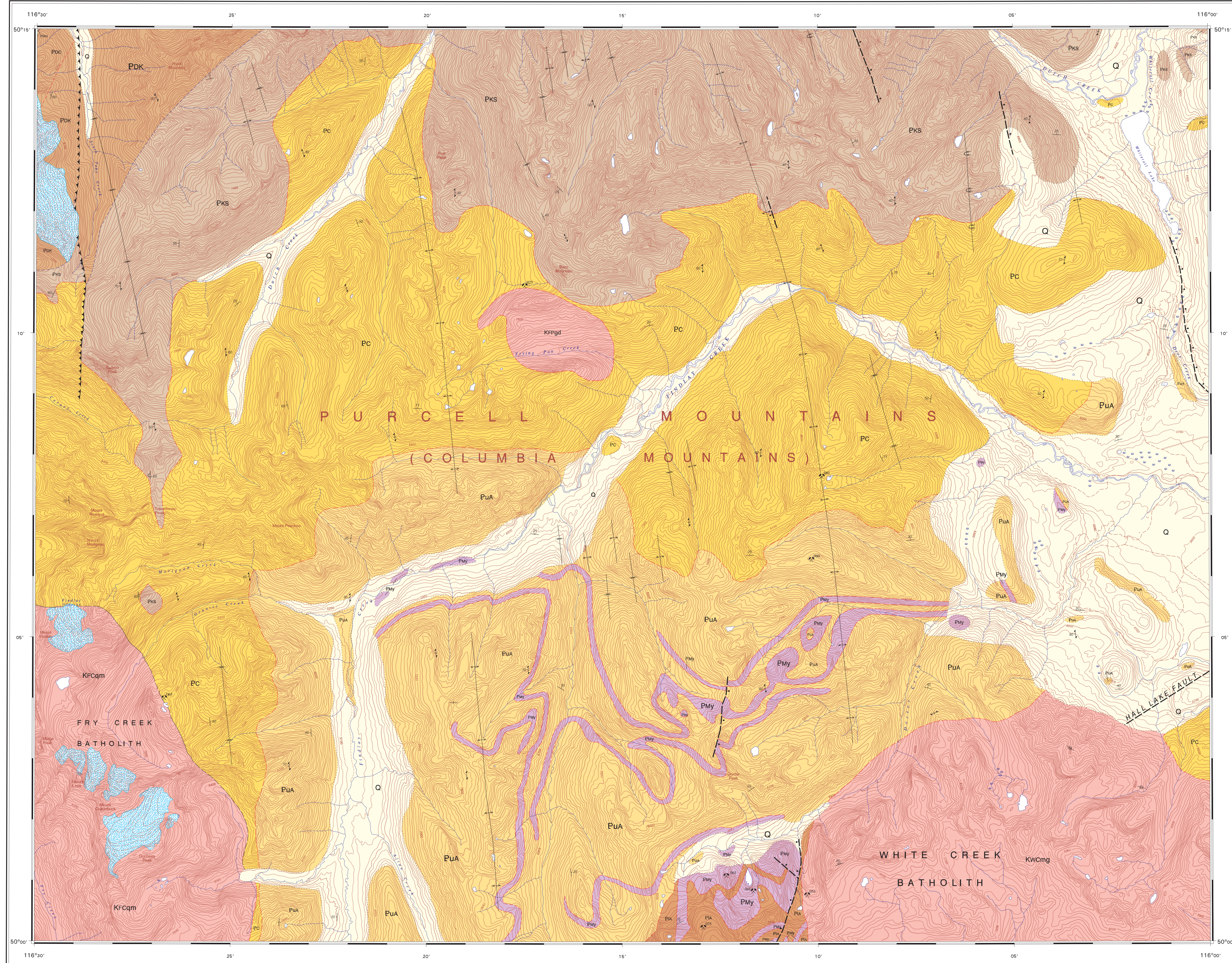
Rusk, K.G.  
1987: Geology of the Delphine Creek area, southeastern British Columbia: Implications for the Proterozoic and Paleozoic development of the Cordilleran divergent margin. Unpublished PhD thesis, University of Calgary, Alberta, Canada, 446p.

**MINERAL OCCURRENCE INDEX**

MINFILENO	NAME	COMMODITY*
082KSE025	BARN	CU,WO,MO,PB
082KSE041	ST. ANTHONY	AG,PB,ZN,CU
082KSE053	SILVER KEY	AG,ZN,PB,CU
082KSE069	D.O.C.	AG,PB,ZN,CU
082KSE063	ECHO LAKE	WO,ZN,PB
082KSE065	IMP	MO
082KSE075	PICO	WO
082KSE081	ROCKY TOP	PB,ZN,AG

\*Abbreviations for commodities: AG - silver; CU - copper; MO - molybdenum; PB - lead; WO - tungsten; ZN - zinc.

Source: British Columbia Ministry of Energy and Mines, MINFILE database available at <http://www.em.gov.bc.ca/Mining/Geosur/Minfir/>



- LEGEND**
- CENOZOIC**
- QUATERNARY**
- PLEISTOCENE AND RECENT**
- Q: Unconsolidated sediments; glacial deposits, colluvium and alluvium; few if any outcrops; probable subcrop unit within parentheses
- CRETACEOUS**
- KFcqm: FRY CREEK BATHOLITH: Quartz monzonite, granodiorite, leucomonzogranite; biotite monzogranite
  - KWcmg: WHITE CREEK BATHOLITH: Biotite monzogranite with megacrysts of potassium feldspar; apfite and pegmatite
  - KFPgd: FRYING PAN CREEK STOCK: Granodiorite
- 7Neoproterozoic**
- PMN: MOUNT NELSON FORMATION undivided: Argillite, calcareous argillite, quartzite, argillaceous quartzite (correlated with Windermere Supergroup based on Root, 1987)
- Mesoproterozoic**
- PURCELL SUPERGROUP**
- PDK: DUTCH CREEK AND KITCHENER-SIYEH FORMATIONS undivided
  - POC: DUTCH CREEK FORMATION undivided: Argillite, sandstone, dolomite
  - PKS: KITCHENER-SIYEH FORMATION: Laminated, buff-weathering, dolomitic and calcareous argillite and quartzite, green and black argillite; grey and pink quartzite; minor purple argillite
  - PC: CRESTON FORMATION: Massive and laminated, green and grey weathering, green and grey argillaceous quartzite and quartzite, green argillite
  - PMY: MOYIE INTRUSIONS (-1.47 Ga): Meta-quartz diorite and diorite
  - PuA: ALDRIDGE FORMATION (Upper Division): Grey quartzite with partings of black argillite; thin-bedded, argillaceous quartzite and argillite
  - PIA: ALDRIDGE FORMATION (Lower Division): Thin-bedded, rusty-weathering, light grey quartzite, argillaceous quartzite

- SYMBOLS**
- Foliation (unclassified): inclined, horizontal, vertical
  - Bedding: inclined, horizontal, vertical, overturned
  - Igneous layering: inclined, horizontal, vertical
  - Mineral Occurrence
  - Geological boundary (from Root, 1978): defined, approximate, assumed
  - Geological boundary (from Reesor, 1973): defined, approximate, assumed
  - Geological boundary (interpreted by compiler): defined, approximate, assumed
  - Quaternary limit
  - Fault, contraction (teeth indicate upthrown side): defined, approximate, assumed
  - Fault, extension (solid circles on downthrown side): defined, approximate, assumed
  - Fault, unclassified: defined, approximate, assumed
  - Syncline: upright, overturned, plunging
  - Anticline: upright, overturned, plunging



**Compilers: R.I. Thompson and P. Dhesei**

Geology by J.E. Reesor, 1953 - 1957

Geological compilation by R.I. Thompson, 2002

Co-ordinated by R.I. Thompson through the auspices of the Targeted Geoscience Initiative 3 (TGI-3)

Digital cartography by P. Dhesei, Geological Survey of Canada, Pacific Division

Any revisions or additional geological information known to the user would be welcomed by the Geological Survey of Canada.

OPEN FILE 6189

**GEOLOGY**

**FINDLAY CREEK**

**BRITISH COLUMBIA**

Scale 1:50 000 / Echelle 1/50 000

Universal Transverse Mercator Projection  
North American Datum 1983  
© Her Majesty the Queen in Right of Canada 2009

Projection transversale méridienne de Mercator  
Système de référence géodésique nord-américain, 1983  
© Sa Majesté la Reine du chef du Canada 2009

Digital base map from data compiled by Geomatics Canada, modified by the Geological Survey of Canada - Pacific Division

Mean magnetic declination 2009, 16°18' E, increasing 13' annually.

Elevations in feet above mean sea level  
Contour interval 100 feet

82 K7	82 K8	82 J5
OF 6183		
82 K2	82 K1	82 J4
OF 6188	OF 6189	
82 F15	82 F16	82 G13

NATIONAL TOPONYMIC OFFICE REFERENCE

**OPEN FILE DOSSIER PUBLIC 6189**

2009

Open file are products that have not gone through the GSC formal publication process.

Les dossiers publics sont des produits qui n'ont pas été soumis au processus officiel de publication de la GSC.

Recommended citation:  
Thompson, R.I. and Dhesei, P. (compilers)  
2009: Geology, Findlay Creek, British Columbia; Geological Survey of Canada, Open File 6189, scale 1:50 000.

Note: This map does not include mapping done after Reesor, 1973

