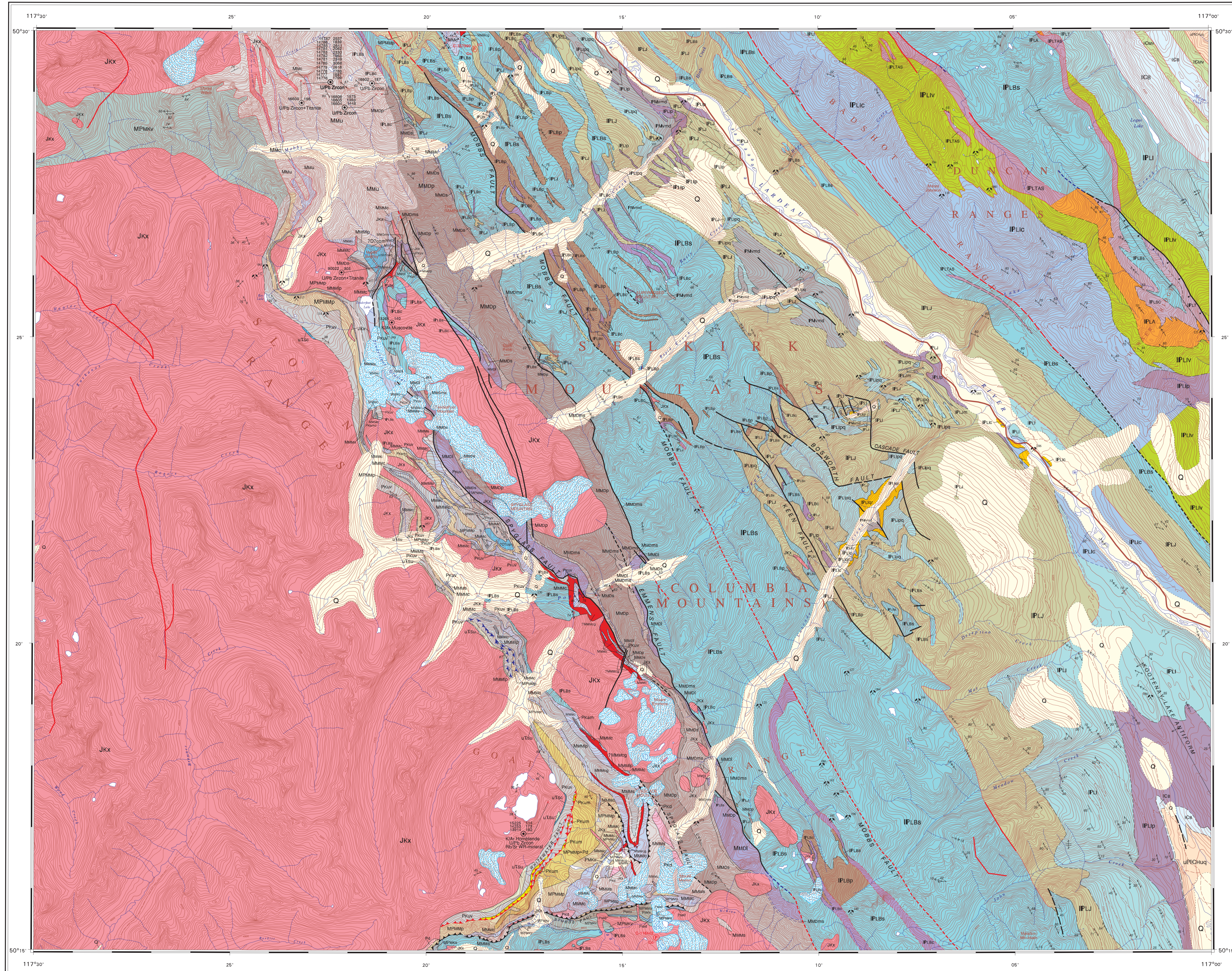


REFERENCES

- Misak, D.W. 1986. Stratigraphy and structural geology of the Goat Range area, southeastern British Columbia, Unpublished Ph.D. thesis, Massachusetts Institute of Technology, Massachusetts, USA, 196p.
Read, P.B. 1972. Petrology and structure of Poplar Creek Map Area, Geological Survey of Canada, Bulletin 193, 144p.
Read, P. B. and Wheeler, J. G. 1976. Geology of Laramie, W2 (82K W2). Geological Survey of Canada, Open File Map 432, 1:125,000.

MINERAL OCCURRENCE INDEX

Table with 3 columns: MINIFILE NO., NAME, and COMMODITY*. Lists various mineral occurrences with their names and associated commodity codes.



OPEN FILE 6184 GEOLOGY POPLAR CREEK BRITISH COLUMBIA

Compilers: R.L. Thompson and P. Dhesi
Geology by: D.W. Kipacki, 1982-84

Geological compilation by R.L. Thompson, 2002
Co-ordinated by R.L. Thompson through the auspices of the Terrestrial Geoscience Initiative 3 (TGI-3)

Digital cartography by P. Dhesi, Geological Survey of Canada, Pacific Division

Digital base map from data compiled by Geomatics Canada, modified by the Geological Survey of Canada - Pacific Division

Mean magnetic declination 2009, 16°43'E, increasing 1° annually.

Elevations in feet above mean sea level

Contours interval 100 feet

Scale 1:50 000/Echelle 1:50 000

Universal Transverse Mercator Projection

Projection hors méridien de la zone 11

North American Datum 1983

Systeme de référence géodésique nord-américain, 1983

Zone 11



Grid of map sheets with coordinates and sheet numbers (e.g., 82 K12, 82 K11, 82 K10).

LEGEND

Legend detailing geological units, symbols, and rock descriptions. Includes sections for Quaternary, Jurassic, Triassic, Permian, and Cambrian to Devonian formations, along with a symbols section.

SYMBOLS

Symbols section detailing geological features such as faults, folds, and mineral occurrences, with corresponding symbols and descriptions.

OPEN FILE DOSSIER PUBLIC 6184

Geological Survey of Canada
2009

Recommended citation:

Thompson, R.L. and Dhesi, P. (compilers)
2009. Geology, Poplar Creek, British Columbia. Geological Survey of Canada, Open File 6184, scale 1:50 000.