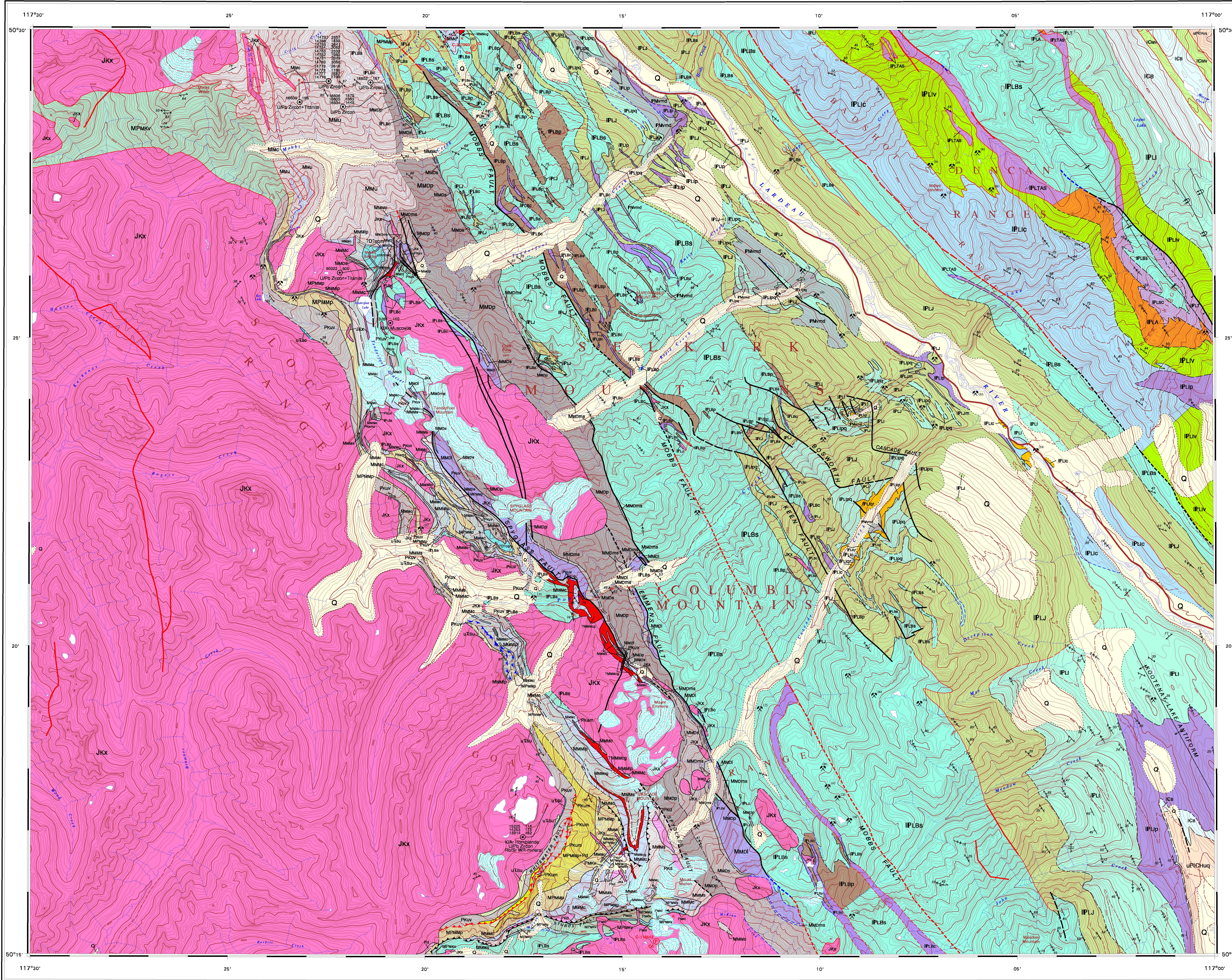
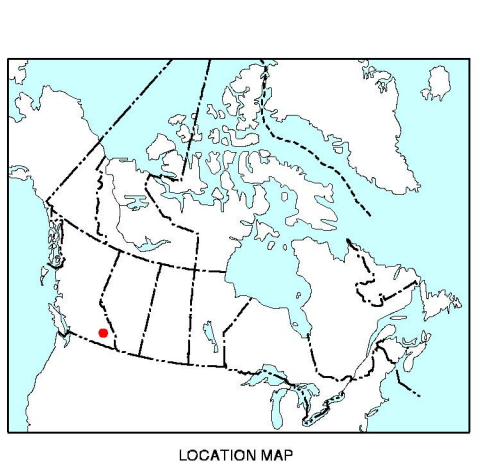


REFERENCES
Knapik, G.W.
1985. Geology and structural geology of the Coast Range area, southeastern British Columbia. Unpublished Ph.D. thesis, Massachusetts Institute of Technology, Massachusetts, USA, 106p.

MINERAL OCCURRENCE INDEX table with columns: MINFILE NO, NAME, COMMODITY\*. Lists various mineral occurrences like GRIZZLY, SPYGLASS, LINDSEY VIEW, etc.



Geological legend and symbols. Includes sections for Quaternary, Mesozoic, Triassic, Permian and Older, and Cambrian to Middle Devonian. Lists geological units with their symbols and descriptions.

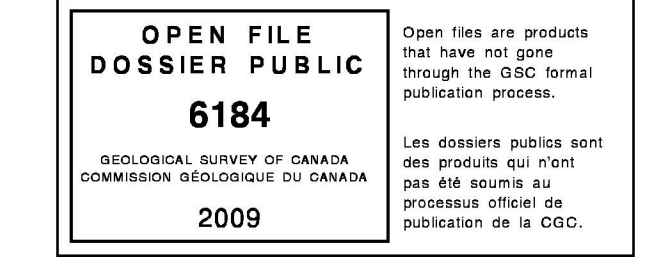


Compilers: R.I. Thompson and P. Dhesi
Geology by: D.W. Knapik, 1982-84
Geological compilation by: R.I. Thompson, 2002

Map title and scale information: OPEN FILE 6184 GEOLOGY POPLAR CREEK BRITISH COLUMBIA. Scale 1:50,000. Includes a scale bar in kilometers and meters.

Digital base map from data compiled by Geomatics Canada, modified by the Geological Survey of Canada - Pacific Division. Mean magnetic declination 2009, 76°43'E, increasing 13" annually.

Grid coordinates table showing Easting (82 610 to 82 615) and Northing (82 810 to 82 815) values.



Recommended citation: Thompson, R.I. and Dhesi, P. (compilers) 2009. Geology, Poplar Creek, British Columbia. Geological Survey of Canada, Open File 6184, scale 1:50,000.