

Deposit Name	SC Number	Class	Notes
Alton	SC200001	Ag, Al, Fe, Si	Pyroclastic tuff (Ag, Si), andalusite
Burns Hill	SC200002	Ag, Al, Fe, Si	Pyroclastic tuff (Ag, Si), andalusite
Black Rock North	SC200003	Ag, Al, Fe, Si	Pyroclastic tuff (Ag, Si), andalusite
Black Rock South	SC200004	Ag, Al, Fe, Si	Pyroclastic tuff (Ag, Si), andalusite
Black Rock West	SC200005	Ag, Al, Fe, Si	Pyroclastic tuff (Ag, Si), andalusite
Black Rock East	SC200006	Ag, Al, Fe, Si	Pyroclastic tuff (Ag, Si), andalusite
Black Rock Central	SC200007	Ag, Al, Fe, Si	Pyroclastic tuff (Ag, Si), andalusite
Black Rock South-East	SC200008	Ag, Al, Fe, Si	Pyroclastic tuff (Ag, Si), andalusite
Black Rock North-East	SC200009	Ag, Al, Fe, Si	Pyroclastic tuff (Ag, Si), andalusite
Black Rock West-East	SC200010	Ag, Al, Fe, Si	Pyroclastic tuff (Ag, Si), andalusite
Black Rock Central-East	SC200011	Ag, Al, Fe, Si	Pyroclastic tuff (Ag, Si), andalusite
Black Rock South-West	SC200012	Ag, Al, Fe, Si	Pyroclastic tuff (Ag, Si), andalusite
Black Rock North-West	SC200013	Ag, Al, Fe, Si	Pyroclastic tuff (Ag, Si), andalusite
Black Rock East-West	SC200014	Ag, Al, Fe, Si	Pyroclastic tuff (Ag, Si), andalusite
Black Rock Central-West	SC200015	Ag, Al, Fe, Si	Pyroclastic tuff (Ag, Si), andalusite
Black Rock South-South-East	SC200016	Ag, Al, Fe, Si	Pyroclastic tuff (Ag, Si), andalusite
Black Rock North-North-East	SC200017	Ag, Al, Fe, Si	Pyroclastic tuff (Ag, Si), andalusite
Black Rock West-North-West	SC200018	Ag, Al, Fe, Si	Pyroclastic tuff (Ag, Si), andalusite
Black Rock East-South-East	SC200019	Ag, Al, Fe, Si	Pyroclastic tuff (Ag, Si), andalusite
Black Rock Central-South-Central	SC200020	Ag, Al, Fe, Si	Pyroclastic tuff (Ag, Si), andalusite
Black Rock South-South-West	SC200021	Ag, Al, Fe, Si	Pyroclastic tuff (Ag, Si), andalusite
Black Rock North-North-West	SC200022	Ag, Al, Fe, Si	Pyroclastic tuff (Ag, Si), andalusite
Black Rock East-West-East	SC200023	Ag, Al, Fe, Si	Pyroclastic tuff (Ag, Si), andalusite
Black Rock Central-West-Central	SC200024	Ag, Al, Fe, Si	Pyroclastic tuff (Ag, Si), andalusite
Black Rock South-South-South-East	SC200025	Ag, Al, Fe, Si	Pyroclastic tuff (Ag, Si), andalusite
Black Rock North-North-North-East	SC200026	Ag, Al, Fe, Si	Pyroclastic tuff (Ag, Si), andalusite
Black Rock West-North-West-North-West	SC200027	Ag, Al, Fe, Si	Pyroclastic tuff (Ag, Si), andalusite
Black Rock East-South-East-South-East	SC200028	Ag, Al, Fe, Si	Pyroclastic tuff (Ag, Si), andalusite
Black Rock Central-South-Central-South-Central	SC200029	Ag, Al, Fe, Si	Pyroclastic tuff (Ag, Si), andalusite
Black Rock South-South-South-South-West	SC200030	Ag, Al, Fe, Si	Pyroclastic tuff (Ag, Si), andalusite
Black Rock North-North-North-North-West	SC200031	Ag, Al, Fe, Si	Pyroclastic tuff (Ag, Si), andalusite
Black Rock East-West-East-West	SC200032	Ag, Al, Fe, Si	Pyroclastic tuff (Ag, Si), andalusite
Black Rock Central-West-Central-West	SC200033	Ag, Al, Fe, Si	Pyroclastic tuff (Ag, Si), andalusite
Black Rock South-South-South-South-South	SC200034	Ag, Al, Fe, Si	Pyroclastic tuff (Ag, Si), andalusite
Black Rock North-North-North-North-North	SC200035	Ag, Al, Fe, Si	Pyroclastic tuff (Ag, Si), andalusite
Black Rock West-North-West-North-West-North-West	SC200036	Ag, Al, Fe, Si	Pyroclastic tuff (Ag, Si), andalusite
Black Rock East-South-East-South-East-South-East	SC200037	Ag, Al, Fe, Si	Pyroclastic tuff (Ag, Si), andalusite
Black Rock Central-South-Central-South-Central-South-Central	SC200038	Ag, Al, Fe, Si	Pyroclastic tuff (Ag, Si), andalusite
Black Rock South-South-South-South-South-South	SC200039	Ag, Al, Fe, Si	Pyroclastic tuff (Ag, Si), andalusite
Black Rock North-North-North-North-North-North	SC200040	Ag, Al, Fe, Si	Pyroclastic tuff (Ag, Si), andalusite
Black Rock East-West-East-West-East-West	SC200041	Ag, Al, Fe, Si	Pyroclastic tuff (Ag, Si), andalusite
Black Rock Central-West-Central-West-Central-West	SC200042	Ag, Al, Fe, Si	Pyroclastic tuff (Ag, Si), andalusite
Black Rock South-South-South-South-South-South-South	SC200043	Ag, Al, Fe, Si	Pyroclastic tuff (Ag, Si), andalusite
Black Rock North-North-North-North-North-North-North	SC200044	Ag, Al, Fe, Si	Pyroclastic tuff (Ag, Si), andalusite
Black Rock East-West-East-West-East-West-East-West	SC200045	Ag, Al, Fe, Si	Pyroclastic tuff (Ag, Si), andalusite
Black Rock Central-West-Central-West-Central-West-Central-West	SC200046	Ag, Al, Fe, Si	Pyroclastic tuff (Ag, Si), andalusite
Black Rock South-South-South-South-South-South-South-South	SC200047	Ag, Al, Fe, Si	Pyroclastic tuff (Ag, Si), andalusite
Black Rock North-North-North-North-North-North-North-North	SC200048	Ag, Al, Fe, Si	Pyroclastic tuff (Ag, Si), andalusite
Black Rock East-West-East-West-East-West-East-West-East-West	SC200049	Ag, Al, Fe, Si	Pyroclastic tuff (Ag, Si), andalusite
Black Rock Central-West-Central-West-Central-West-Central-West-Central-West	SC200050	Ag, Al, Fe, Si	Pyroclastic tuff (Ag, Si), andalusite
Black Rock South-South-South-South-South-South-South-South-South	SC200051	Ag, Al, Fe, Si	Pyroclastic tuff (Ag, Si), andalusite
Black Rock North-North-North-North-North-North-North-North-North	SC200052	Ag, Al, Fe, Si	Pyroclastic tuff (Ag, Si), andalusite
Black Rock East-West-East-West-East-West-East-West-East-West-East-West	SC200053	Ag, Al, Fe, Si	Pyroclastic tuff (Ag, Si), andalusite
Black Rock Central-West-Central-West-Central-West-Central-West-Central-West-Central-West	SC200054	Ag, Al, Fe, Si	Pyroclastic tuff (Ag, Si), andalusite
Black Rock South-South-South-South-South-South-South-South-South-South	SC200055	Ag, Al, Fe, Si	Pyroclastic tuff (Ag, Si), andalusite
Black Rock North-North-North-North-North-North-North-North-North-North	SC200056	Ag, Al, Fe, Si	Pyroclastic tuff (Ag, Si), andalusite
Black Rock East-West-East-West-East-West-East-West-East-West-East-West-East-West	SC200057	Ag, Al, Fe, Si	Pyroclastic tuff (Ag, Si), andalusite
Black Rock Central-West-Central-West-Central-West-Central-West-Central-West-Central-West-Central-West	SC200058	Ag, Al, Fe, Si	Pyroclastic tuff (Ag, Si), andalusite
Black Rock South-South-South-South-South-South-South-South-South-South-South	SC200059	Ag, Al, Fe, Si	Pyroclastic tuff (Ag, Si), andalusite
Black Rock North-North-North-North-North-North-North-North-North-North-North	SC200060	Ag, Al, Fe, Si	Pyroclastic tuff (Ag, Si), andalusite
Black Rock East-West-East-West-East-West-East-West-East-West-East-West-East-West-East-West	SC200061	Ag, Al, Fe, Si	Pyroclastic tuff (Ag, Si), andalusite
Black Rock Central-West-Central-West-Central-West-Central-West-Central-West-Central-West-Central-West-Central-West	SC200062	Ag, Al, Fe, Si	Pyroclastic tuff (Ag, Si), andalusite
Black Rock South-South-South-South-South-South-South-South-South-South-South-South	SC200063	Ag, Al, Fe, Si	Pyroclastic tuff (Ag, Si), andalusite
Black Rock North-North-North-North-North-North-North-North-North-North-North-North	SC200064	Ag, Al, Fe, Si	Pyroclastic tuff (Ag, Si), andalusite
Black Rock East-West-East-West-East-West-East-West-East-West-East-West-East-West-East-West-East-West	SC200065	Ag, Al, Fe, Si	Pyroclastic tuff (Ag, Si), andalusite
Black Rock Central-West-Central-West-Central-West-Central-West-Central-West-Central-West-Central-West-Central-West-Central-West	SC200066	Ag, Al, Fe, Si	Pyroclastic tuff (Ag, Si), andalusite
Black Rock South-South-South-South-South-South-South-South-South-South-South-South-South	SC200067	Ag, Al, Fe, Si	Pyroclastic tuff (Ag, Si), andalusite
Black Rock North-North-North-North-North-North-North-North-North-North-North-North-North	SC200068	Ag, Al, Fe, Si	Pyroclastic tuff (Ag, Si), andalusite
Black Rock East-West-East-West-East-West-East-West-East-West-East-West-East-West-East-West-East-West-East-West	SC200069	Ag, Al, Fe, Si	Pyroclastic tuff (Ag, Si), andalusite
Black Rock Central-West-Central-West-Central-West-Central-West-Central-West-Central-West-Central-West-Central-West-Central-West-Central-West	SC200070	Ag, Al, Fe, Si	Pyroclastic tuff (Ag, Si), andalusite
Black Rock South-South-South-South-South-South-South-South-South-South-South-South-South-South	SC200071	Ag, Al, Fe, Si	Pyroclastic tuff (Ag, Si), andalusite
Black Rock North-North-North-North-North-North-North-North-North-North-North-North-North-North	SC200072	Ag, Al, Fe, Si	Pyroclastic tuff (Ag, Si), andalusite
Black Rock East-West-East-West-East-West-East-West-East-West-East-West-East-West-East-West-East-West-East-West-East-West	SC200073	Ag, Al, Fe, Si	Pyroclastic tuff (Ag, Si), andalusite
Black Rock Central-West-Central-West-Central-West-Central-West-Central-West-Central-West-Central-West-Central-West-Central-West-Central-West-Central-West	SC200074	Ag, Al, Fe, Si	Pyroclastic tuff (Ag, Si), andalusite
Black Rock South-South-South-South-South-South-South-South-South-South-South-South-South-South-South	SC200075	Ag, Al, Fe, Si	Pyroclastic tuff (Ag, Si), andalusite
Black Rock North-North-North-North-North-North-North-North-North-North-North-North-North-North-North	SC200076	Ag, Al, Fe, Si	Pyroclastic tuff (Ag, Si), andalusite
Black Rock East-West-East-West-East-West-East-West-East-West-East-West-East-West-East-West-East-West-East-West-East-West-East-West	SC200077	Ag, Al, Fe, Si	Pyroclastic tuff (Ag, Si), andalusite
Black Rock Central-West-Central-West-Central-West-Central-West-Central-West-Central-West-Central-West-Central-West-Central-West-Central-West-Central-West-Central-West	SC200078	Ag, Al, Fe, Si	Pyroclastic tuff (Ag, Si), andalusite
Black Rock South-South-South-South-South-South-South-South-South-South-South-South-South-South-South-South	SC200079	Ag, Al, Fe, Si	Pyroclastic tuff (Ag, Si), andalusite
Black Rock North-North-North-North-North-North-North-North-North-North-North-North-North-North-North-North	SC200080	Ag, Al, Fe, Si	Pyroclastic tuff (Ag, Si), andalusite
Black Rock East-West-East-West-East-West-East-West-East-West-East-West-East-West-East-West-East-West-East-West-East-West-East-West-East-West	SC200081	Ag, Al, Fe, Si	Pyroclastic tuff (Ag, Si), andalusite
Black Rock Central-West-Central-West-Central-West-Central-West-Central-West-Central-West-Central-West-Central-West-Central-West-Central-West-Central-West-Central-West-Central-West	SC200082	Ag, Al, Fe, Si	Pyroclastic tuff (Ag, Si), andalusite
Black Rock South-South-South-South-South-South-South-South-South-South-South-South-South-South-South-South-South	SC200083	Ag, Al, Fe, Si	Pyroclastic tuff (Ag, Si), andalusite
Black Rock North-North-North-North-North-North-North-North-North-North-North-North-North-North-North-North-North	SC200084	Ag, Al, Fe, Si	Pyroclastic tuff (Ag, Si), andalusite
Black Rock East-West-East-West-East-West-East-West-East-West-East-West-East-West-East-West-East-West-East-West-East-West-East-West-East-West-East-West	SC200085	Ag, Al, Fe, Si	Pyroclastic tuff (Ag, Si), andalusite
Black Rock Central-West-Central-West-Central-West-Central-West-Central-West-Central-West-Central-West-Central-West-Central-West-Central-West-Central-West-Central-West-Central-West-Central-West	SC200086	Ag, Al, Fe, Si	Pyroclastic tuff (Ag, Si), andalusite
Black Rock South-South-South-South-South-South-South-South-South-South-South-South-South-South-South-South-South-South	SC200087	Ag, Al, Fe, Si	Pyroclastic tuff (Ag, Si), andalusite
Black Rock North-North-North-North-North-North-North-North-North-North-North-North-North-North-North-North-North-North	SC200088	Ag, Al, Fe, Si	Pyroclastic tuff (Ag, Si), andalusite
Black Rock East-West-East-West-East-West-East-West-East-West-East-West-East-West-East-West-East-West-East-West-East-West-East-West-East-West-East-West-East-West	SC200089	Ag, Al, Fe, Si	Pyroclastic tuff (Ag, Si), andalusite
Black Rock Central-West-Central-West-Central-West-Central-West-Central-West-Central-West-Central-West-Central-West-Central-West-Central-West-Central-West-Central-West-Central-West-Central-West-Central-West	SC200090	Ag, Al, Fe, Si	Pyroclastic tuff (Ag, Si), andalusite
Black Rock South-South-South-South-South-South-South-South-South-South-South-South-South-South-South-South-South-South-South	SC200091	Ag, Al, Fe, Si	Pyroclastic tuff (Ag, Si), andalusite
Black Rock North-North-North-North-North-North-North-North-North-North-North-North-North-North-North-North-North-North-North	SC200092	Ag, Al, Fe, Si	Pyroclastic tuff (Ag, Si), andalusite
Black Rock East-West-East-West-East-West-East-West-East-West-East-West-East-West-East-West-East-West-East-West-East-West-East-West-East-West-East-West-East-West-East-West	SC200093	Ag, Al, Fe, Si	Pyroclastic tuff (Ag, Si), andalusite
Black Rock Central-West-Central-West-Central-West-Central-West-Central-West-Central-West-Central-West-Central-West-Central-West-Central-West-Central-West-Central-West-Central-West-Central-West-Central-West-Central-West	SC200094	Ag, Al, Fe, Si	Pyroclastic tuff (Ag, Si), andalusite
Black Rock South-South-South-South-South-South-South-South-South-South-South-South-South-South-South-South-South-South-South-South	SC200095	Ag, Al, Fe, Si	Pyroclastic tuff (Ag, Si), andalusite
Black Rock North-North-North-North-North-North-North-North-North-North-North-North-North-North-North-North-North-North-North-North	SC200096	Ag, Al, Fe, Si	Pyroclastic tuff (Ag, Si), andalusite
Black Rock East-West-East-West-East-West-East-West-East-West-East-West-East-West-East-West-East-West-East-West-East-West-East-West-East-West-East-West-East-West-East-West-East-West	SC200097	Ag, Al, Fe, Si	Pyroclastic tuff (Ag, Si), andalusite
Black Rock Central-West-Central-West-Central-West-Central-West-Central-West-Central-West-Central-West-Central-West-Central-West-Central-West-Central-West-Central-West-Central-West-Central-West-Central-West-Central-West-Central-West	SC200098	Ag, Al, Fe, Si	Pyroclastic tuff (Ag, Si), andalusite
Black Rock South-South	SC200099	Ag, Al, Fe, Si	Pyroclastic tuff (Ag, Si), andalusite
Black Rock North-North	SC200100	Ag, Al, Fe, Si	Pyroclastic tuff (Ag, Si), andalusite

REFERENCES

Andrew, K.P.E., Hoy, T., and Droba, J.
 1990. Geology of the Rossland Group, Beaver Creek Area, Southeastern B.C. (BSP#E), by K.P.E. Andrew, T. Hoy and J. Droba (1:20 000), 1 sheet, Open File 1990-8.

Andrew, K.P.E., Hoy, T., and Droba, J.
 1991. Geology of the Trail Map Area, Southeastern British Columbia (BSP#A, 4, 5, 6), (1:100 000), 1 sheet, Open File 1991-16.

Ernstson, J.M.
 1994. Structural geology of the Panof area and tectonic evolution of the southern Kootenay Arc, British Columbia. Doctoral Monograph, University of Calgary, Calgary, AB, Canada (CAN), 217 p. and maps.

Fyles, J.T. and Hewitt, C.G.
 1990. Stratigraphy and structure of the Salmo lead-zinc area, British Columbia Department of Mines, Bulletin 41, 162 p.

Hoy, T. and Andrew, K.P.E.
 1990. Geology of the Rossland Group, Mount Kelly - Hilliering Creek Area, Southeastern B.C. (BSP#W) (1:20 000), 1 sheet, Open File 1990-8.

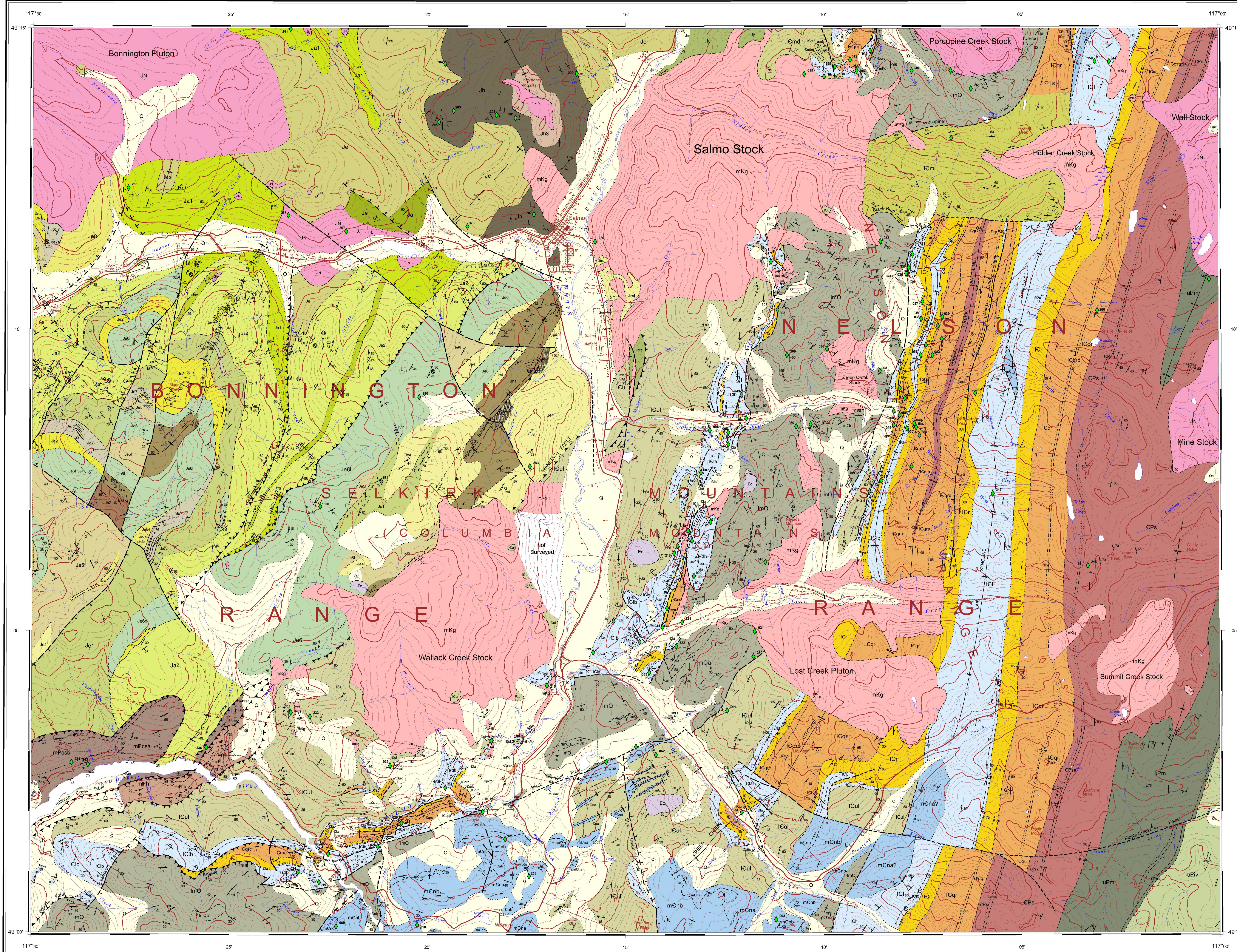
Hoy, T. and Dunne, K.J.E.
 1997. Early Jurassic Rossland Group, southern British Columbia, Part 1 - Stratigraphy and Tectonics. BC Ministry of Energy, Mines and Petroleum Resources, Bulletin 102, 124 p.

Little, H.W.
 1965. Geology, Salmo, British Columbia. Geological Survey of Canada, "A" Series Map 1145A, 1965.

Mathews, W.H.
 1953. Geology of the Sheep Creek Camp, British Columbia Department of Mines, Bulletin no. 31, 94 p.

SYMBOLS

- Bedding, top unknown (indicated, overturned)
- Bedding, top unknown (indicated, vertical)
- Structurally inclined, (indicated, overturned)
- Lineation (indicated)
- Mineral occurrence (see table above for corresponding BC Mine number)
- ASR (symbol indicating orientation)
- Geological contact (defined, approximate, assumed)
- Fault, undisturbed (defined, approximate, assumed)
- Normal fault, dot on downthrown side (defined, approximate, assumed)
- Thrust fault, teeth indicate upthrown side (defined, approximate, assumed)
- Intense carbonate-silica alteration zone
- Shear zone
- Fold, synclinal, anticlinal, overturned synclinal (defined, approximate, assumed)
- Fossil localities:
 - Archaeozoophiles of the Lower Cambrian in the Rossland Member (Fyles and Hewitt, 1990)
 - Brachiopods, ammonites and bivalves of early to late Devonian (Early Jurassic) in the Archibald Formation (Fyles and Dunne, 1997)
 - Ammonites of the Shewanian (Early Jurassic) in the Elise Formation (Fyles and Dunne, 1997)
 - Remains of early Tertiary (late Early Jurassic) in the Hilliering Formation (Fyles and Dunne, 1997)



LEGEND

QUATERNARY

- Q Unconsolidated sediments: Till, sand/gravel, all

Tertiary or older (?)

- Kr Rhyolite dykes

CENOZOIC

Eocene

- Ec Coryell Plutonic rocks: Augite-biotite monzonite, biotite-hornblende gneiss
- Es Sheppard intrusions: Leucocratic granite and syenite

MEZOZOIC

Mit Cretaceous

- mKg Biotite granite, quartz monzonite, monzonite, granite, diorite

Mid Jurassic

- Jh Nelson intrusions: Porphyritic biotite, granobiotite, quartz monzonite, tonalite, minor diorite, porphyry and breccia

Lower and Middle(?) Jurassic

Rossland Group

- Jh1 Siltstone, argillite, local abundant volcanic rocks
- Jh2 Carbonaceous siltstone and horofels
- Jh3 Polymict pebble conglomerate, grit, lithic arenite and waste; minor silty argillite
- Jh4 Argillite, rusty weathering, minor siltstone

Elise Formation

- Je Un differentiated mafic to intermediate volcanic flows, buff, sub-volcanic intrusions and epistolic deposits
- Je6 Tuffaceous conglomerate: a, predominantly mafic volcanic clasts; b, mixed mafic to felsic volcanic clasts; c, predominantly intermediate to felsic volcanic and intrusive clasts and (west of Douglas Creek) occasional limestone clasts; d, abundant limestone clasts; e, siltstone and mafic volcanic clasts
- Je7 Tuffaceous siltstone, sandstone; a, argillaceous siltstone
- Je8 Andesite tuff, minor basaltic tuff, lapilli tuff with plagioclase + augite-bearing volcanic clasts; x, plagioclase + augite crystal tuff
- Je5 Basaltic tuff; Augite-phyric lapilli tuff, pyroclastic breccia; f, mafic, fine tuff
- Je4 Argillite + plagioclase basalt flows, flow breccias

Lower Elise Formation (Mount Kelly Area)

- Je3 Basaltic to andesitic lapilli, crystal and fine tuff, reworked pyroclastic deposits
- Je2 Basaltic lapilli tuff with argillite + plagioclase bearing volcanic clasts

Lower Elise Formation

- Je1 Argillite + plagioclase basalt flows, flow breccias, subvolcanic intrusions

Archibald Formation

- Ja Turbidity sandstone, siltstone, argillite
- Ja1 Basalt, andesite flows, lapilli tuff
- Ja2 Turbidity siltstone, waste minor conglomerate; a, conglomerate, commonly containing limestone clasts
- Ja3 Argillite, minor siltstone

Lower Jurassic and Upper Triassic (?)

Free Group

- Jy Turbidity sandstone and siltstone, gneissiferous

PALEOZOIC

middle Paleozoic (Devonian to Lower Triassic ?)

- mCs Carbonaceous Creek Assemblage: a, siliceous argillite, black phyllite, slate; b, black limestone
- mFb Harcourt Creek Assemblage: Mafic tuff and volcanoclastic breccia, shart, banded mafite, and quartzite; a, black argillite; b, grey limestone; c, chert, quartzite

Lower and (?) Middle Ordovician

- ImO Active formation: Black carbonaceous argillite and slate; a, grey limestone and argillaceous limestone; b, siliceous argillite and limestone; c, dolomite, dolomite breccia, and limestone

Mid Cambrian

- ImC Melway Formation: Cream weathering grey dolomite, limestone and argillite; a, limestone and carbonaceous argillite; b, dark and light grey dolomite; c, grey limestone

Lower Cambrian to Ordovician (?)

- ICuL Upper Lab Formation (Index Formation equivalent): Black phyllite, mica schist, micaceous quartzite, carbonaceous phyllite, minor limestone

Lower Cambrian

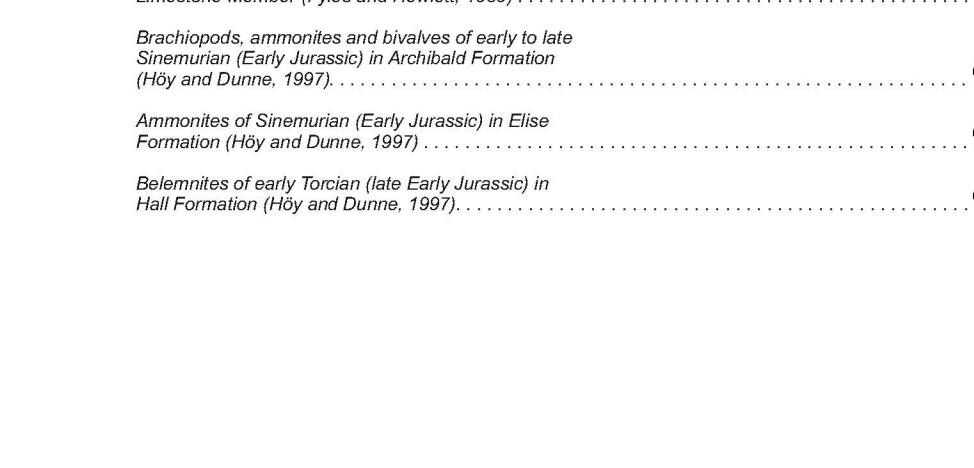
- ICl Lab Formation: a, Tuman Member: Dark phyllite with marble interbeds; b, Reeves Limestone member (Bedford equivalent): Grey limestone (caliche marble), minor dolomite (abornitic marble); c, Emerald Member: Black phyllite and argillite
- ICr Reno Formation: Argillaceous quartzite, mica schist
- ICar Quartzite Range Formation: White, green, and pinkish quartzite; a, Motherlode Member: White quartzite, minor argillite, grit and green schist; b, Nugget Member: White quartzite, argillaceous quartzite and argillite at base; c, Nevada Member: Thin bedded argillaceous quartzite, white quartzite at top; d, argillaceous quartzite, probably equivalent to lower Nugget Member (b)

Lower Cambrian and Proterozoic

- ImM Unaltered metasedimentary rocks: Quartzite, argillite, slate, minor limestone; a, black phyllite and schist
- ImO Unaltered metasedimentary rocks: Quartzite, argillite, slate, minor limestone; a, black phyllite and schist
- ICp Three Shales Formation: Green and grey grit and quartzite; minor conglomerate and green schist; a, conglomerate; b, chert and schist; c, brown ironstone schist

PROTEROZOIC

- ImV Monk Formation: Green argillite and phyllite; a, conglomerate; b, limestone
- ImVv Iron Volcanic Formation: Greenstone; minor argillite near base; a, limestone



OPEN FILE 6048
 BEDROCK GEOLOGY
SALMO
 BRITISH COLUMBIA

Scale 1:50 000/Echelle 1/50 000

Authors: S. Paradis, R.F. MacLeod, and R. Emperingham

Geological compilation by S. Paradis, R.F. MacLeod, and R. Emperingham, 2007-2008

Geology by Mathews (1953), Fyles and Hewitt (1959), Little (1965), K.P.E. Andrew, T. Hoy and J. Droba (1990), T. Hoy and K. Andrew (1990), K.P.E. Andrew, T. Hoy and P. Simony (1991), and J. Ernstson (1994).

Co-ordinated through the auspices of the Targeted Geology Initiative (TGI)

Digital cartography by R.F. MacLeod and R. Emperingham Geological Survey of Canada (Pacific Division)

Scale 1:50 000/Echelle 1/50 000

Universal Transverse Mercator Projection
 North American Datum 1983
 © Her Majesty the Queen in Right of Canada 2009

Projection transversale universelle de Mercator
 Système de référence géodésique nord-américain 1983
 © Sa Majesté la Reine du chef du Canada 2009

Digital base map from data compiled by Geomatics Canada, modified by R.F. MacLeod

Magnetic declination 2009, 16°19' E, decreasing 12' annually

Elevations in feet above mean sea level

Contour interval 200 feet

6048	6049	6050
6051	6052	6053
6054	6055	6056
6057	6058	6059

OPEN FILE DOSSIER PUBLIC 6048

Open file and products that have not gone through the GSC formal publication process.

Les dossiers publics ont été produits sans passer par le processus officiel de publication de la GSC.

2009

MINERAL TYPING: SYSTEM REFERENCE AND TO ADDRESS GEOLOGICAL SURVEY OF CANADA, 6048