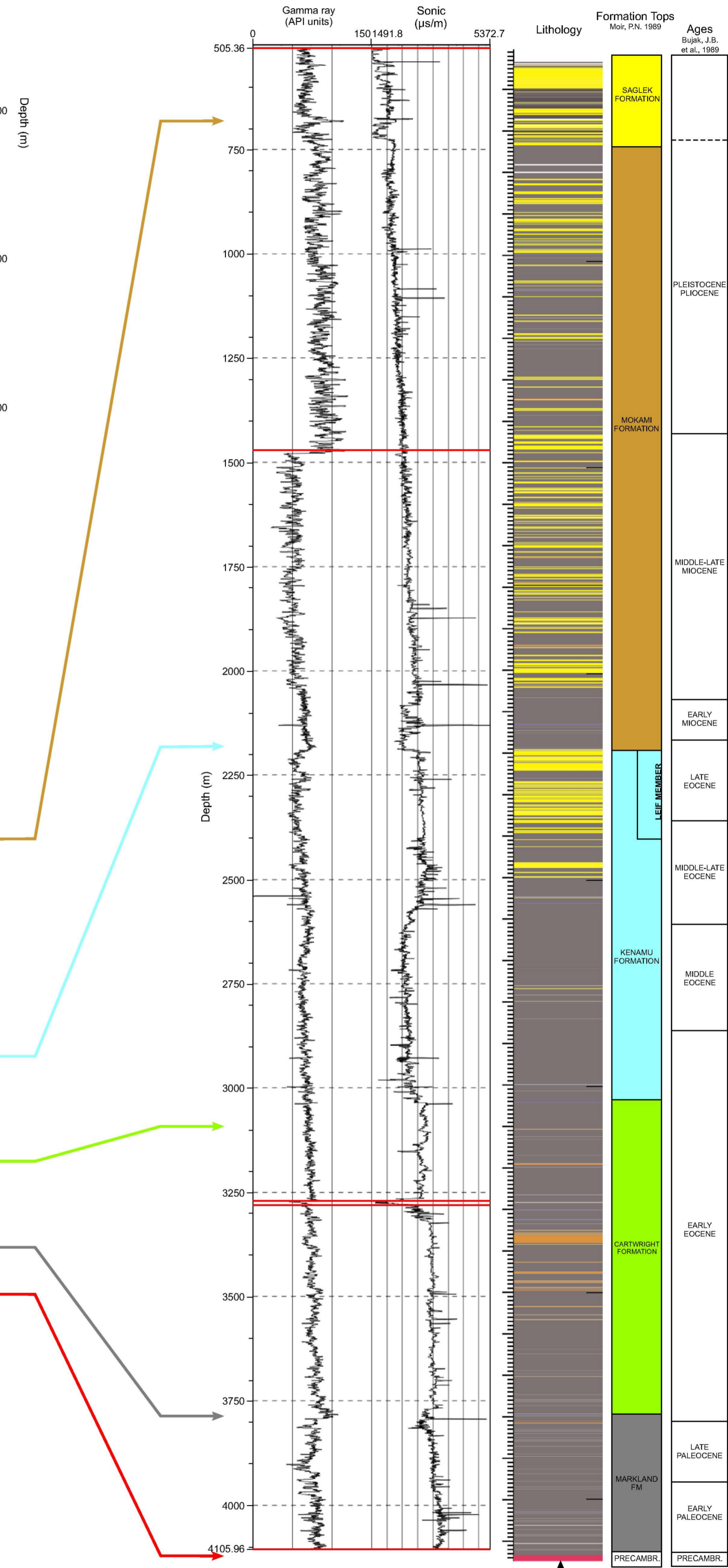
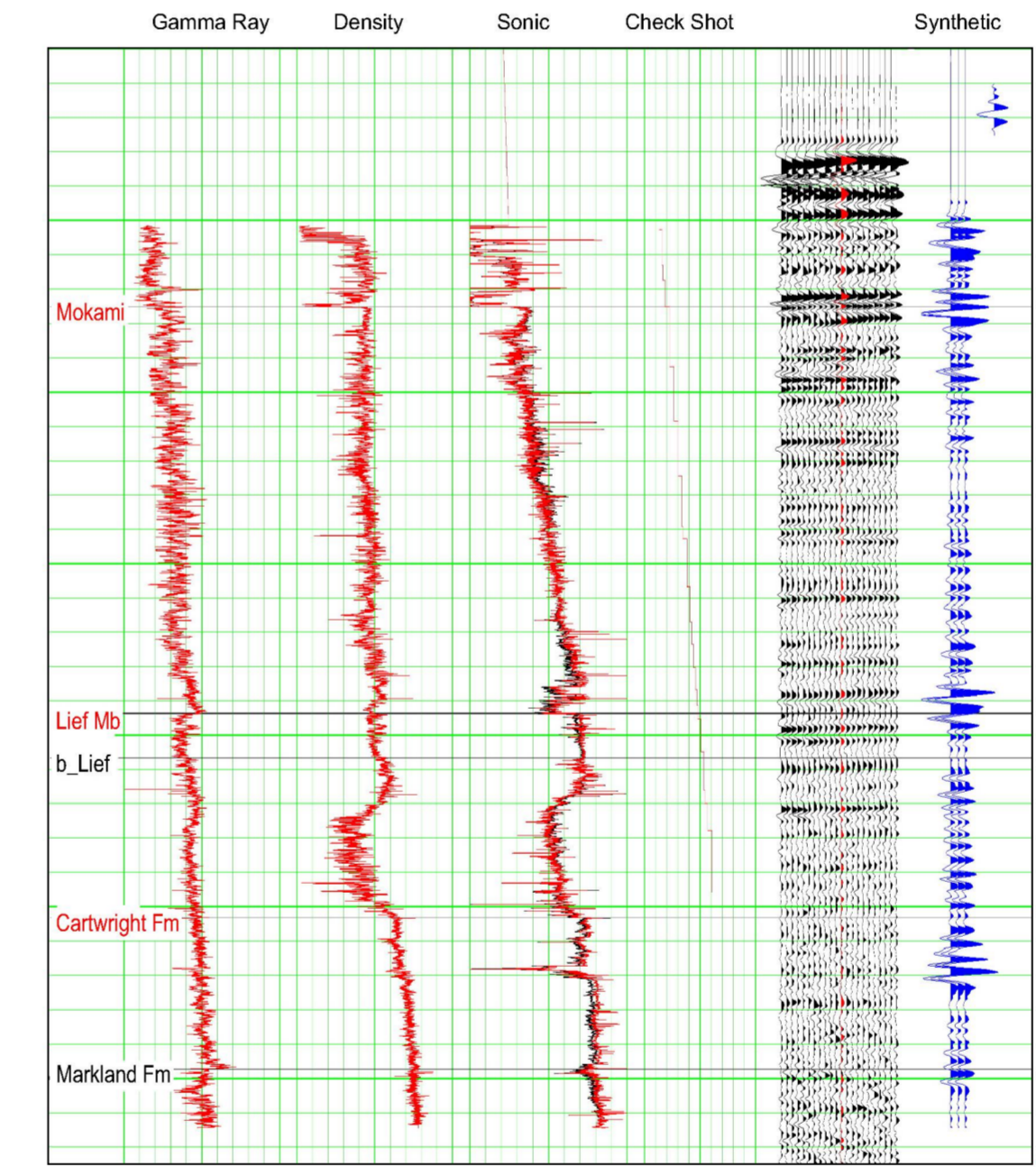
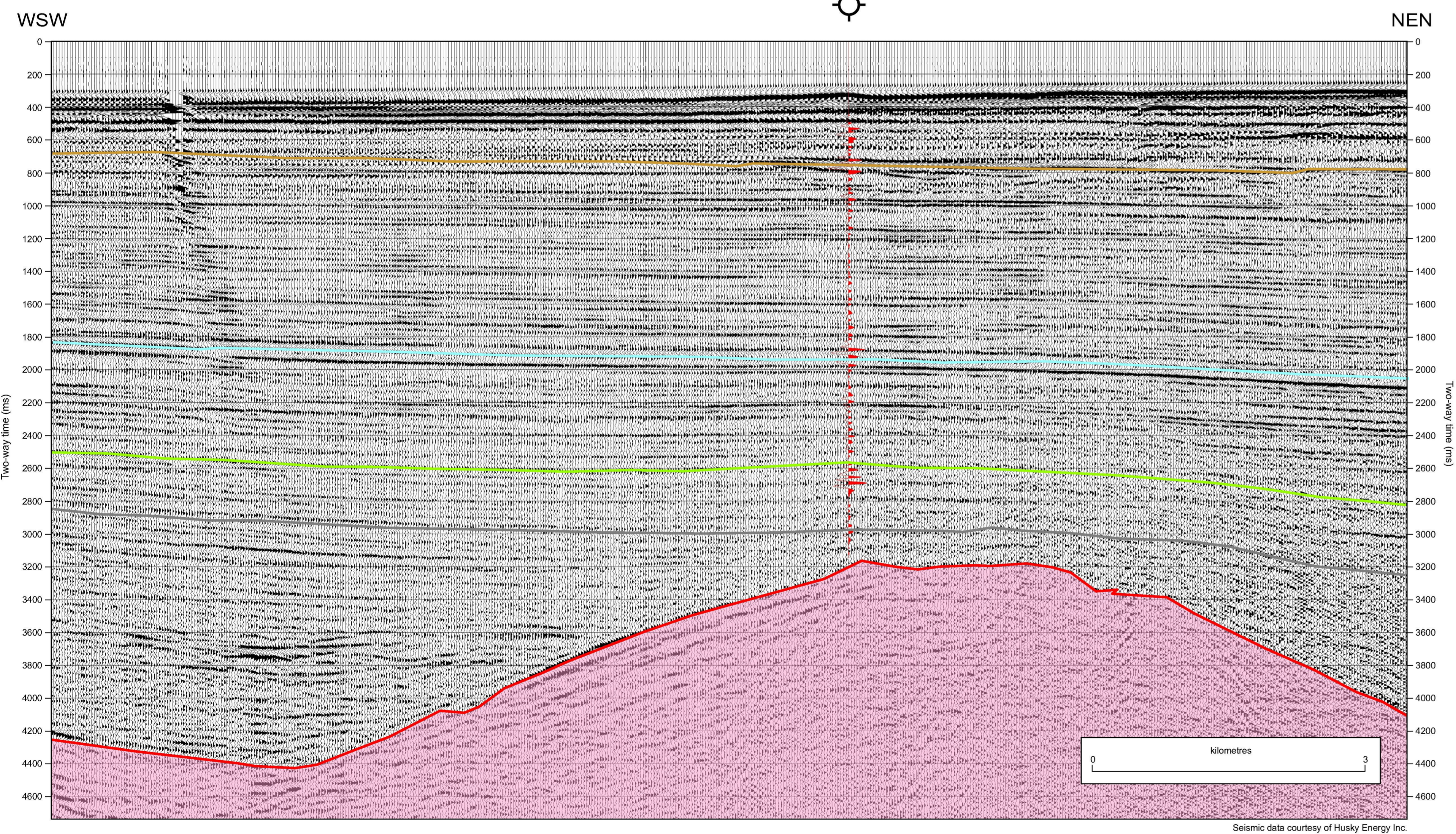


**Pressure plot and petrophysical analysis:** The data shown in the pressure plot are all from Basin Database. Shown are in the first column the lithology, in the second one the formation names and the pressures available from mud logs and tests; in columns 3 and 4 log plots to test based on shale content from gamma ray if there are remnants of overpressures - shown as doglegs on the log plots -, and in 5 and 6 from lithological descriptions; column 7 shows maturity data from vitrinite reflectance and column 8 from Rock Eval; column 9 and 10 show the potential source rock quality; the last column shows where core has been cut and porosity measurements if available.

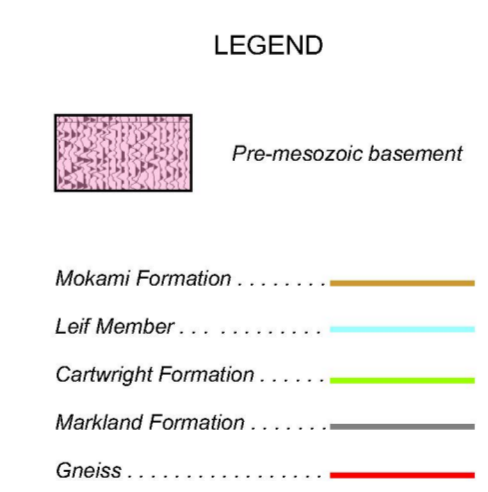


KARLSEFNI A-13	
300 A13 59000 61450	
Area:	LABRADOR SHELF
Basin:	SAGLEK
Latitude:	58.87084
Longitude:	-61.77835
Well Class:	EXPLORATORY
Status:	P&A
Operator:	EASTCAN ET AL
Oil:	UNRATED
Gas:	UNRATED
Spud date:	10-AUG-1975
RT release:	25-SEP-1975
RT:	12.2
Waterdepth:	174.7
TD:	4148.9

This well tested a broad, gentle rollover in the Leif Member that was influenced by the strong basement structure. While the petrophysical data shows pronounced dog leg signatures in the sandstones, these are only hydrocarbon relicts as water was recovered during well testing. There are minor differences on the lithology logs done by D'Eon-Miller and Canstrat. Based on the few samples measured, relatively low hydrocarbon maturity was found, indicative of fairly low heat flow values in the area. The high amplitude reflections seen deeper in the seismic section to the west of the well may indicate gas charged Freydis Member sandstones.



Well to seismic correlation using Hampson-Russell STRATA software



REFERENCES

- Bujak, J.B. et al. 1989: Biostratigraphy / Maturation Data II. In: East Coast Basin Atlas Series, Labrador Sea. Atlantic Geoscience Centre, Geological Survey of Canada, p.42, Labrador Sea Basin Atlas.
- Miller, P.E., and D'Eon, G.J. 1987: Labrador Shelf - Palaeoenvironments. GSC Open File 1722, 186p.
- Moir, P.A. 1989: Lithostratigraphy 1: Review and type sections. In: East Coast Basin Atlas Series, Labrador Sea. Atlantic Geoscience Centre, Geological Survey of Canada, p.26, Labrador Sea Basin Atlas.

**OPEN FILE DOSSIER PUBLIC 5910**

Open files are products that have not gone through the GSC formal publication process.

Les dossiers publics sont des produits qui n'ont pas été soumis au processus officiel de publication de la CGC.

2009

SHEETS OF 6 / FEUILLET 5 ET 6

Hydrocarbon prospectivity of Davis Strait and Labrador Shelf: seismic setting and stratigraphy for Gjoa G-37, Hejka O-71, Rut H-11, Gilbert F-53, Karlsefni A-13, and Skolp E-07

Authors: C. Jauer, H. Wielens, and G. Williams