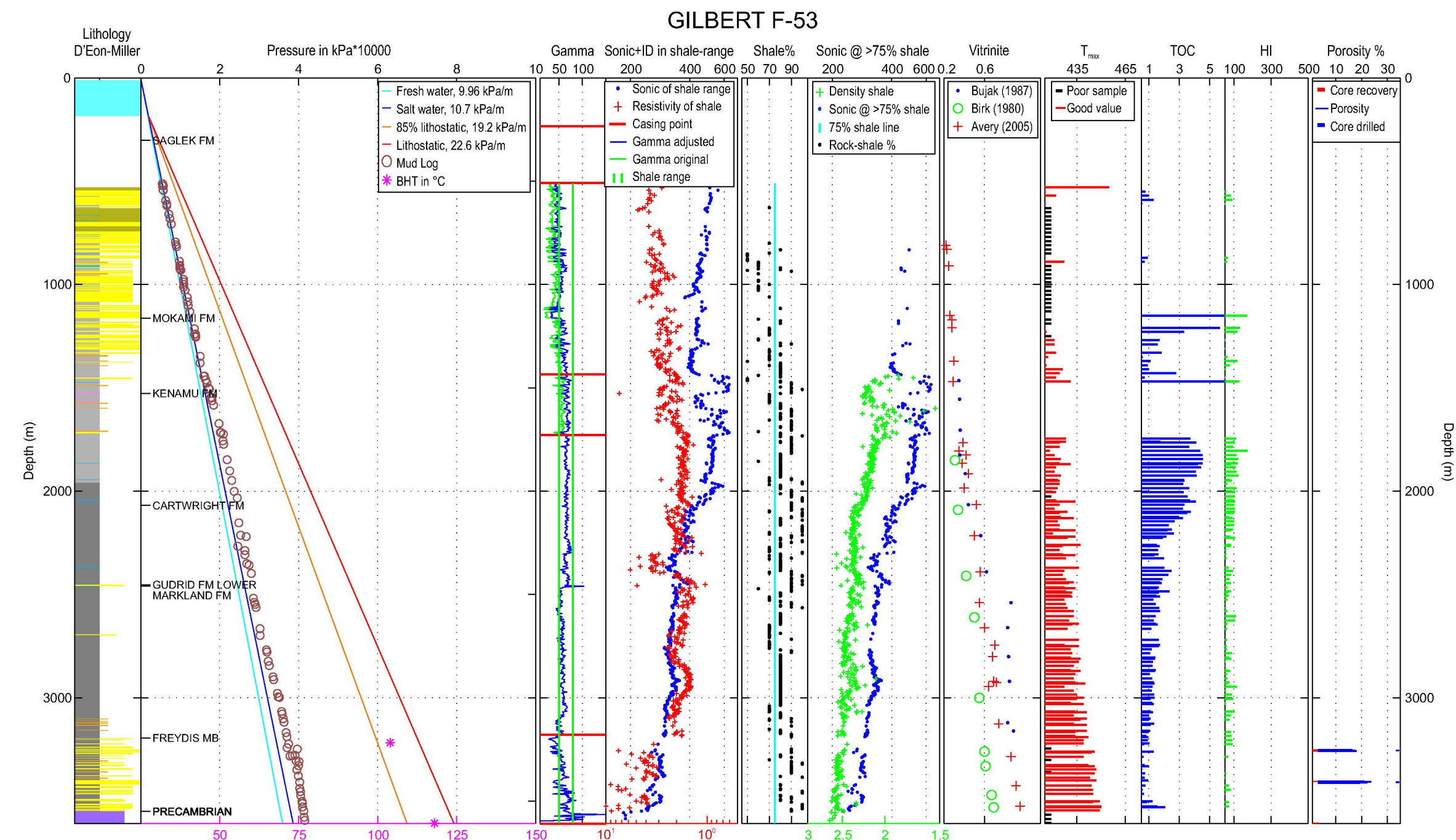


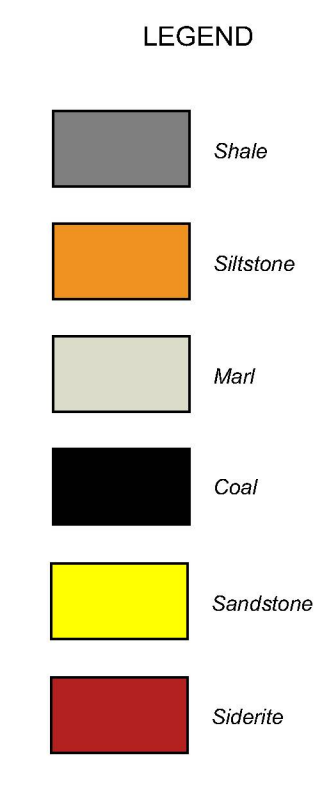
GILBERT F-53		
300 F53 59000 62000		
Area:	LABRADOR SHELF	Oil: UNRATED
Basin:	SAGLEK	Gas: UNRATED
Latitude:	58.87411	Spud date: 08-OCT-1979
Longitude:	-62.13973	Rig release: 15-OCT-1979
Well Class:	EXPLORATORY	Status: P&A
Operator:	TOTAL EASTCAN ET AL	Waterdepth: 183 m



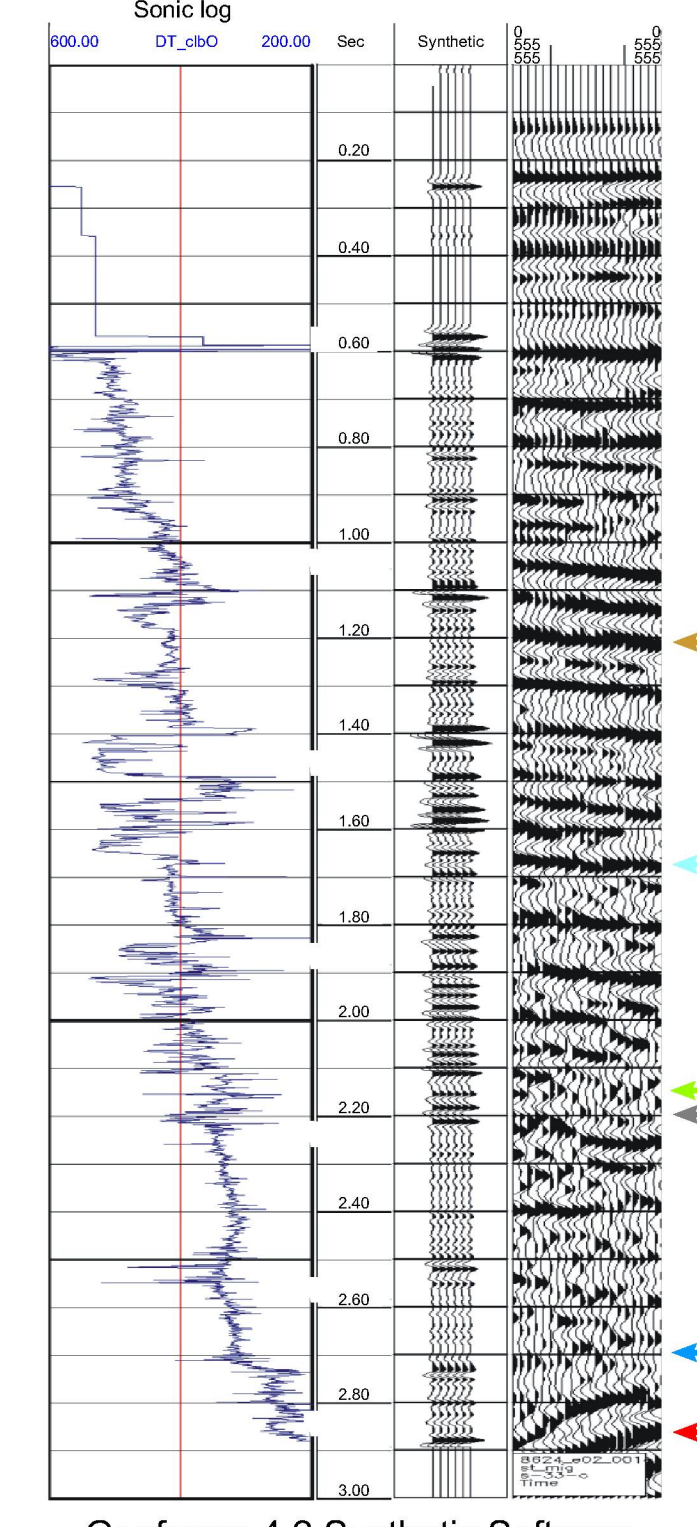
Pressure plot and petro physical analysis: The data shown in the pressure plot are all from Basin Database. Shown are in the first column the lithology; in the second one the formation names and the pressures available from mud logs and tests; in columns 3 and 4 log plots to test based on shale content from gamma ray if there are remnants of overpressures - shown as doglegs on the log plots -, in 5 and 6 from lithological descriptions; column 7 shows maturity data from vitrinite reflectance and column 8 from Rock Eval; column 9 and 10 show the potential source rock quality; the last column shows where core has been cut and porosity measurements if available.

The Gilbert F-53 location is shown on this dip line as testing the structural / stratigraphic potential of the Gudrid Formation and the underlying Freydis sandstones that crest further east over the basement structural highs. At this site the Gudrid sands have largely shaled out, the only prospective reservoir are the sandstones seen in the Freydis Member.

The wireline logs here show some sign of a pressure kick in the Freydis but the other logs do not show any of the "dog legs" that usually characterize the presence of hydrocarbons. This test was a follow up to the Karlsefni A-13 further to the east that missed the Freydis sands by drilling too high on a similar basement feature, but had more encouraging log data.



Casing Pt ...

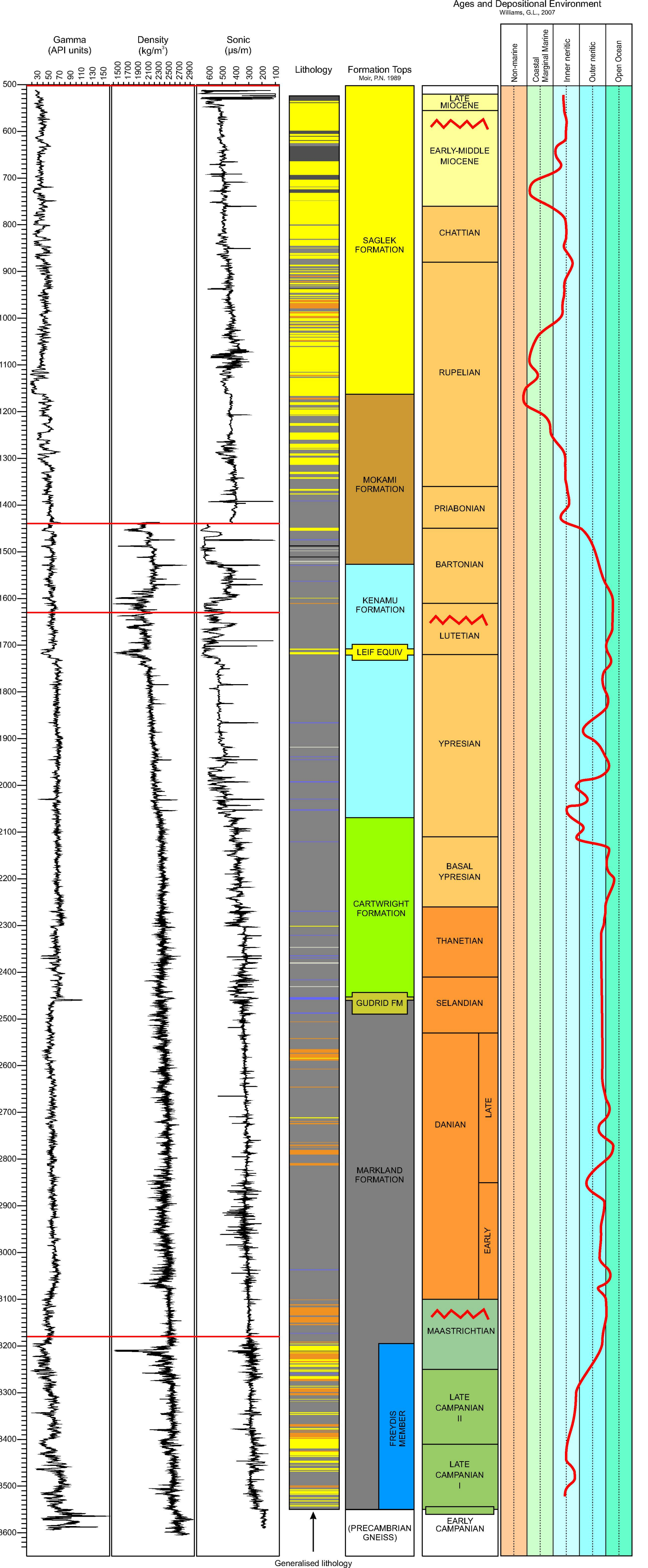


Geoframe 4.2 Synthetic Software



REFERENCES

- Avery, M.P. 2005: Vitrinite reflectance data for Total-Eastcan et al Gilbert F-53, Geological Survey of Canada Open File 4979, 17 p.
- Bla, D. 1980: GEOCHEMICAL EVALUATION REPORT; Well history reports, Canada-Newfoundland and Labrador Offshore Petroleum Board/Jurisdictional areas.
- Moir, P.N. 1980: Lithostratigraphy, 1: Review and type sections. In: East Coast Basin Atlas Series, Labrador Sea, Atlantic Geoscience Centre, Geological Survey of Canada, p. 36, Labrador Sea Basin Atlas.
- Williams, G.L. 2007: Petrological analysis of Total Eastcan et al. Gilbert F-53, Saglek Basin, Labrador Shelf, Geological Survey of Canada Open File Report 5450, 22 p. (1 sheet)



Generalised lithology log based on digital data from Canadian Stratigraphic Services

OPEN FILE DOSSIER PUBLIC

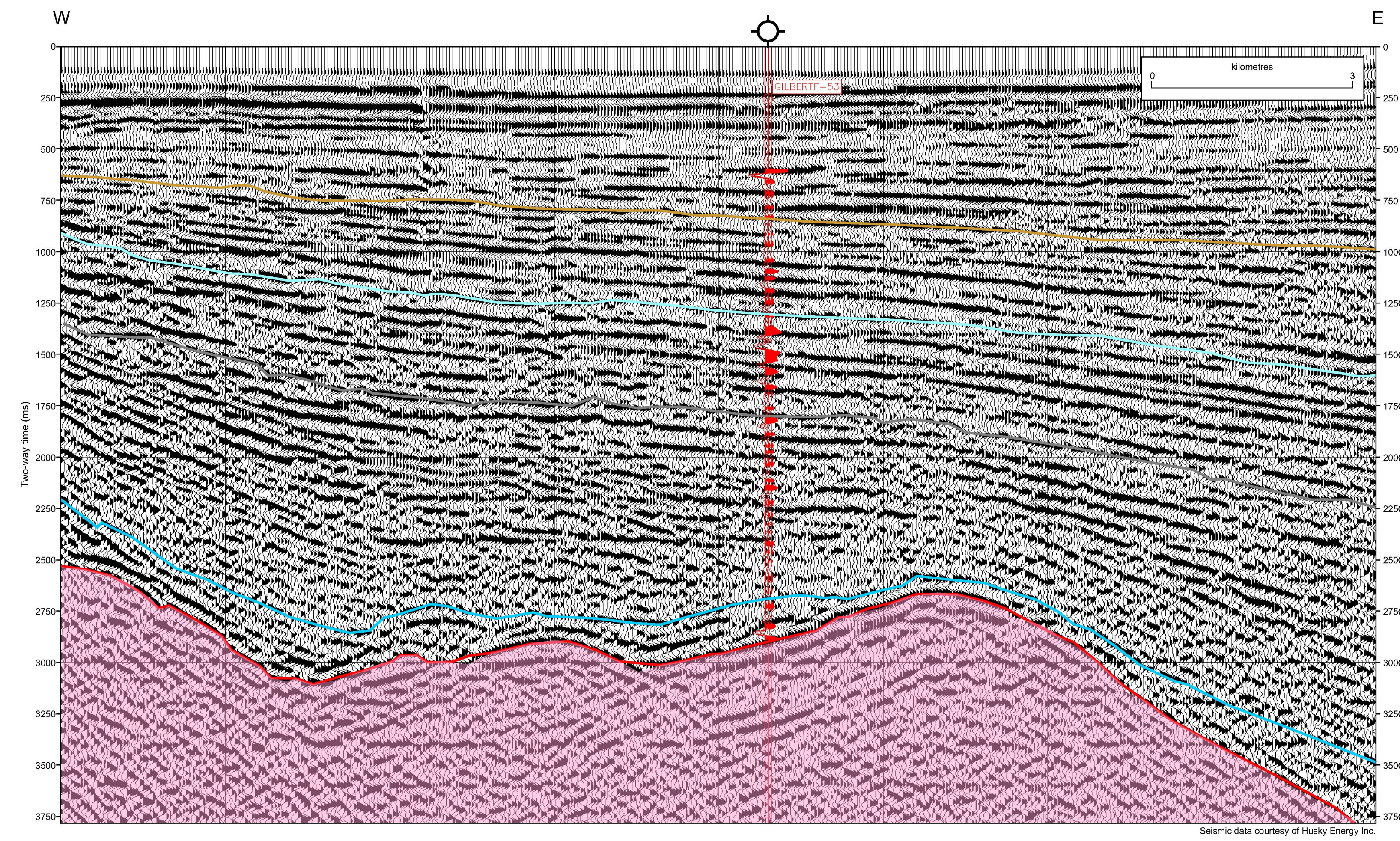
5910

2009

SHEET 4 OF 6
FEUILLET 4 ET 6

Open files are products that have not gone through the GSC format publication process.

Les dossiers publics sont des produits qui n'ont pas été soumis au processus officiel de publication de la GSC.



Seismic data courtesy of Husky Energy Inc.

Hydrocarbon prospectivity of Davis Strait and Labrador Shelf: seismic setting and stratigraphy for Gjoa G-37, Hekja O-71, Rut H-11, Gilbert F-53, Karlsefni A-13, and Skolp E-07

Authors: C. Jauer, H. Wielens, and G. Williams