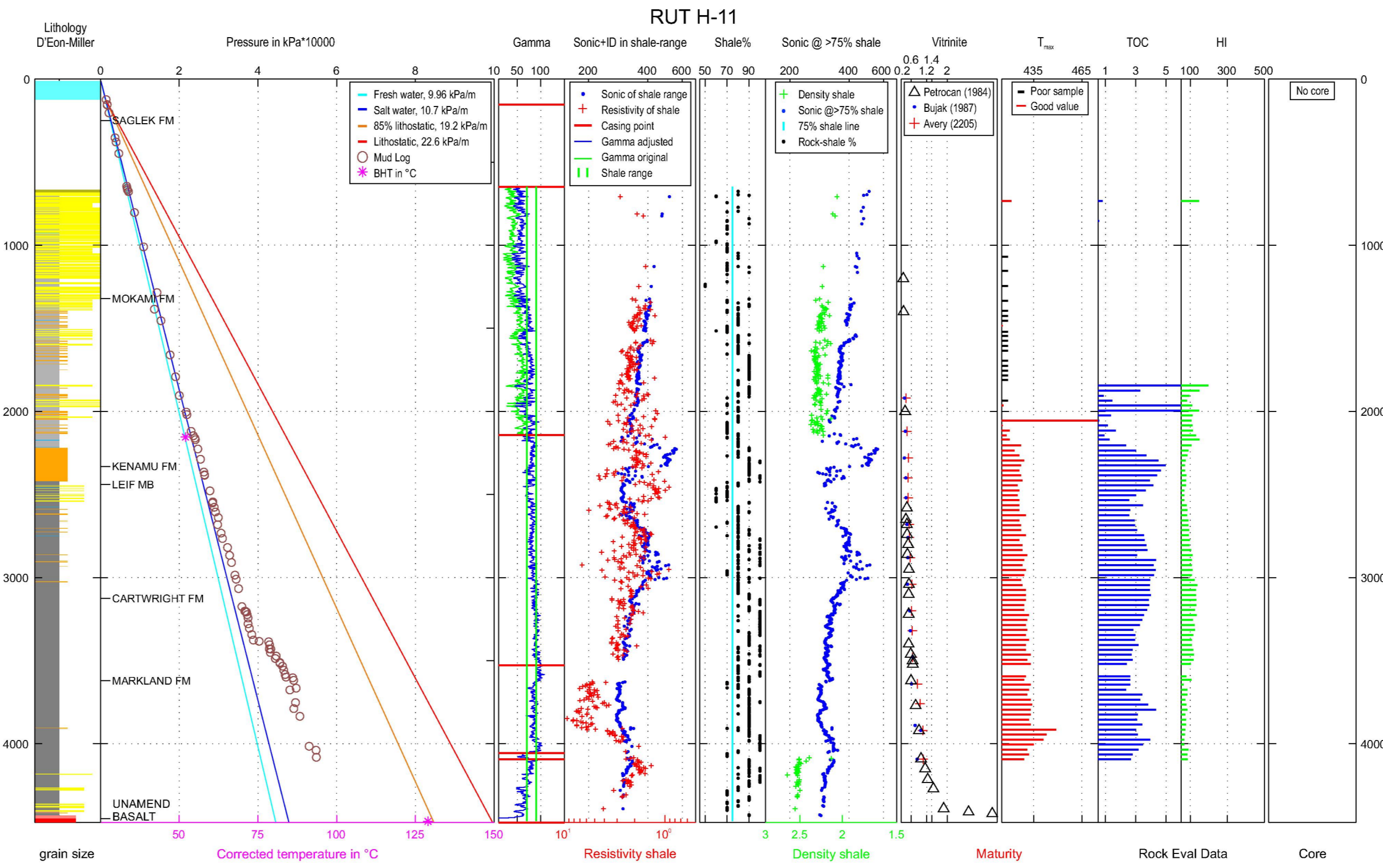
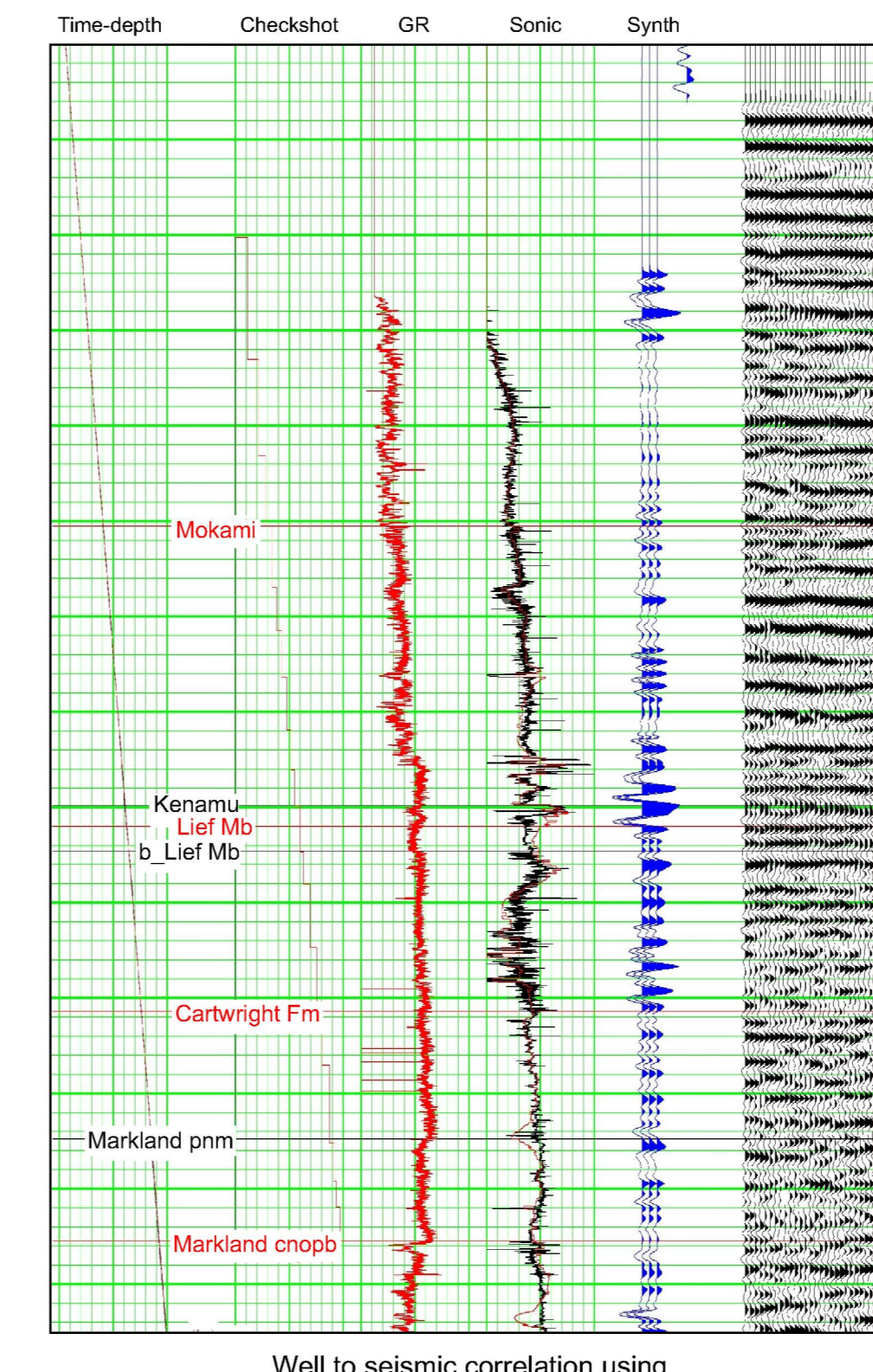
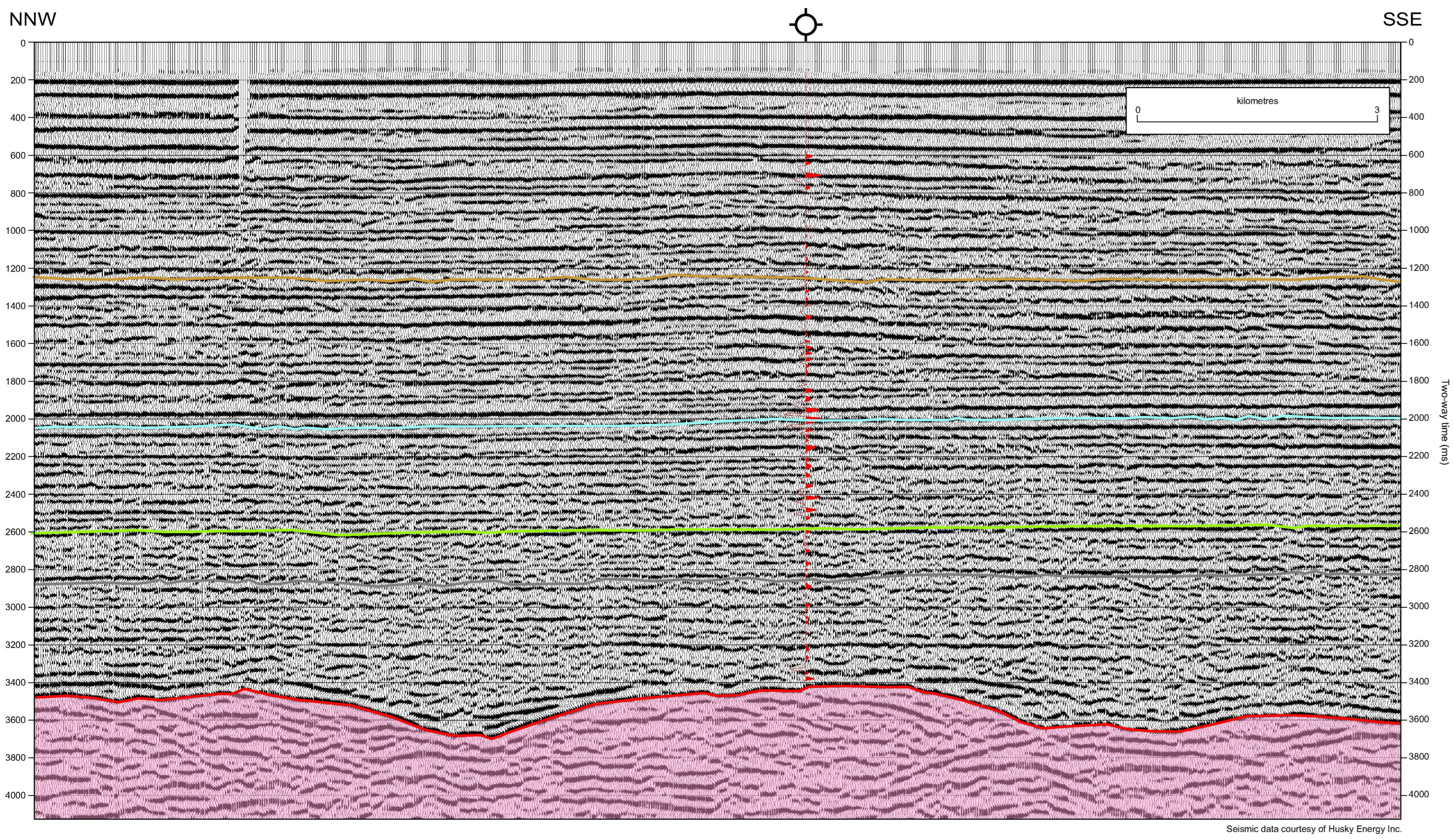
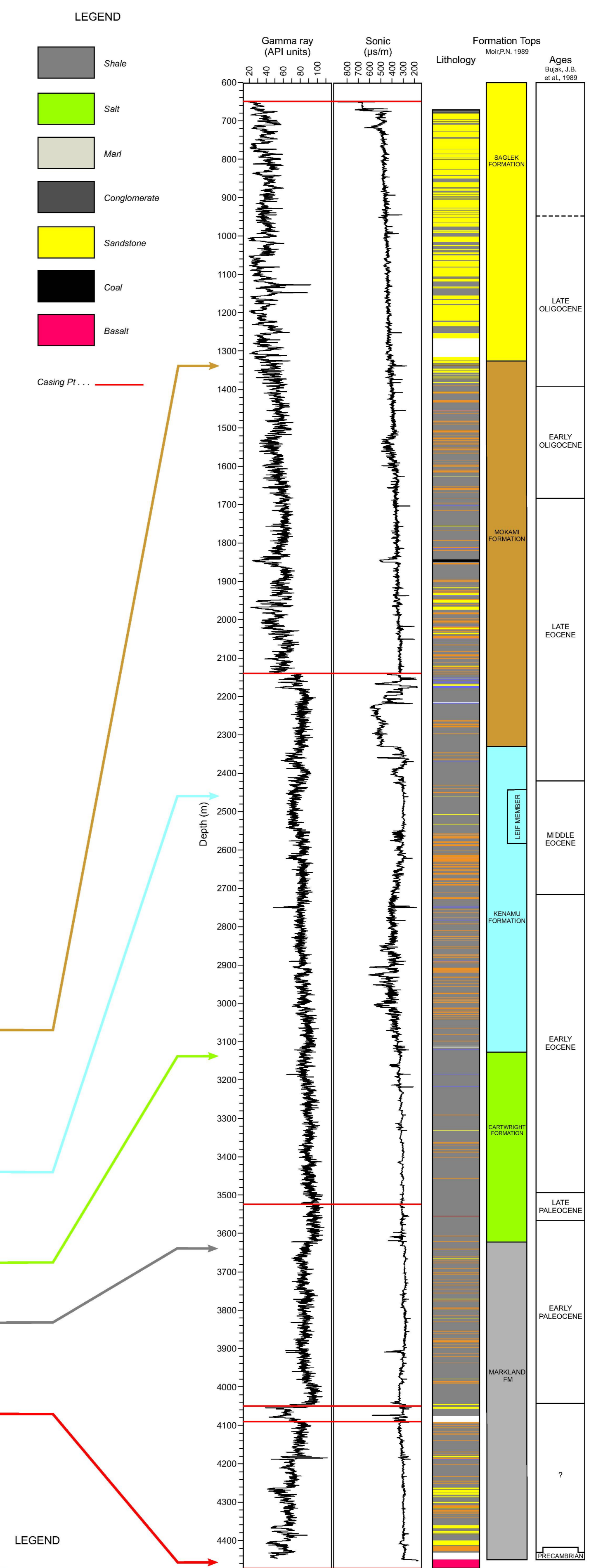


RUT H-11	
300 H11 59200 62150	
Area:	LABRADOR SHELF
Basin:	SAGLEK
Latitude:	59.171242
Longitude:	-62.279764
Well Class:	EXPLORATORY
Status:	P&A
Operator:	PETRO CANADA ET AL
Oil:	UNRATED
Gas:	UNRATED
Spud date:	14-JUL-1981
Rig release:	27-SEP-1981
RT:	11.6 m
Waterdepth:	124 m
TD:	4474 m

The Rut H-11 well was drilled on a gentle basement structure that is almost unnoticeable from a north to south strike orientation. This strike section shows the continuation of the structural trend seen in the Saglek Basin and this trend would be conducive towards forming structural traps in the Lief and Cartwright (Gudrid Member) sandstones and the Bjarni. No shows were found in the first two units and the Bjarni interval was not encountered before basement was reached. An example of the disparity in identifying some of these units is seen with the Markland shale pick, which has been interpreted at two differing levels. The lithology logs also show differences in rock types, notably at the top of the Kenamu formation.



Pressure plot and petro physical analysis: The data shown in the pressure plot are all from Basin Database. Shown are in the first column the lithology; in the second one the formation names and the pressures available from mud logs and tests; in columns 3 and 4 log plots to test based on shale content from gamma ray if there are remnants of overpressures - shown as doglegs on the log plots -, and in 5 and 6 from lithological descriptions; column 7 shows maturity data from vitrinite reflectance and column 8 from Rock Eval; column 9 and 10 show the potential source rock quality; the last column shows where core has been cut and porosity measurements if available.



REFERENCES

Avery, M.P. 2005. Vitrinite reflectance data for Petro-Canada et al. RUT H-11. Geological Survey of Canada Open File 4980, 13 p.

Bujak, J.B. et al. 1989. Biostratigraphy / Maturation Data II. In: East Coast Basin Atlas Series, Labrador Sea, Atlantic Geoscience Centre, Geological Survey of Canada, p. 49, Labrador Sea Basin Atlas.

Bujak Davies Group 1987. Biostratigraphy and Maturation of 17 Labrador and Baffin Shelf wells; Volume 8: Roberval-K-92 and Rut H-11, GSC Open File Report 1936, 57 p.

Miller, P.E., and D'Eon, G.J. 1987. Labrador Shelf - Paleoenvironments; GSC Open File 1722, 186 p.

Molz, P.N. 1989. Lithostratigraphy 1: Review and type sections. In: East Coast Basin Atlas Series, Labrador Sea, Atlantic Geoscience Centre, Geological Survey of Canada, p. 26, Labrador Sea Basin Atlas.

LEGEND

Pre-mesozoic basement
Mokami Formation
Lief Member
Cartwright Formation
Markland Formation
Basalt

OPEN FILE DOSSIER PUBLIC 5910

GEOLOGICAL SURVEY OF CANADA / COMMISSION GÉOLOGIQUE DU CANADA 2009

SHEET 3 OF 6 / FEUILLET 3 ET 6

Hydrocarbon prospectivity of Davis Strait and Labrador Shelf: seismic setting and stratigraphy for Gjoa G-37, Hejka O-71, Rut H-11, Gilbert F-53, Karlsefni A-13, and Skolp E-07

Authors: C. Jauer, H. Wielens, and G. Williams