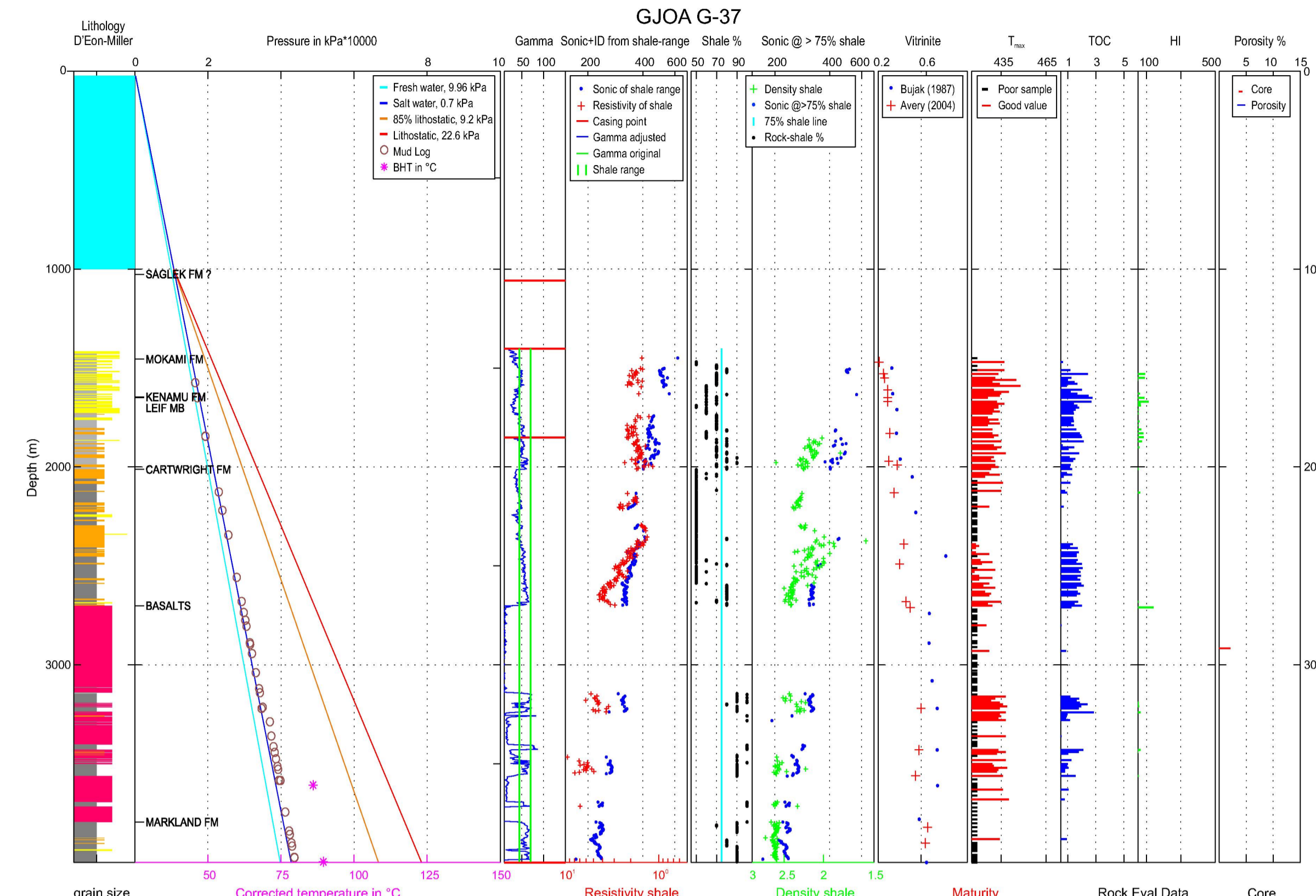
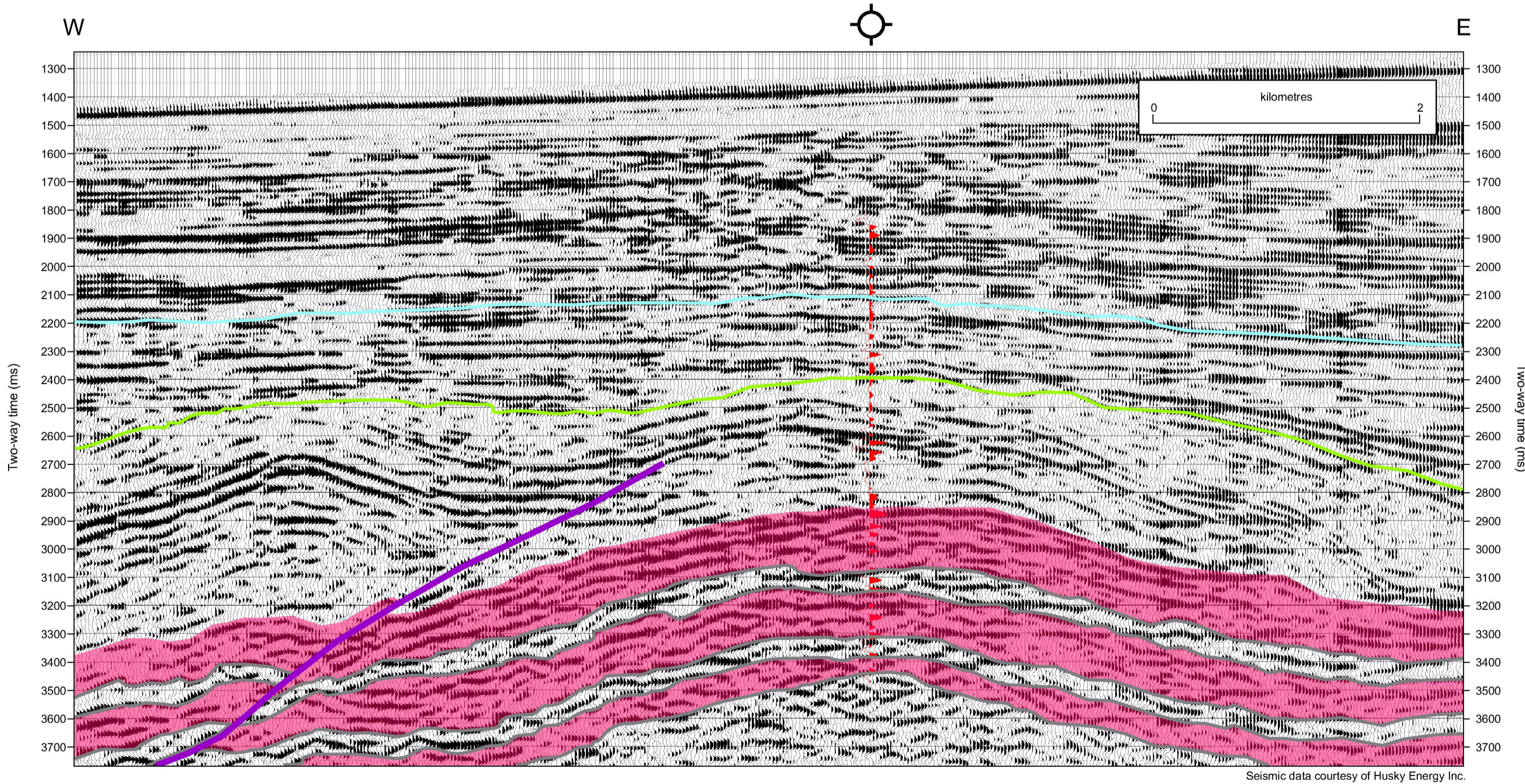


GJOA G-37		
300 G37 63000 59000		
Area:	DAVIS STRAIT	Oil: UNRATED
Basin:	SAGLEK	Gas: UNRATED
Latitude:	62.9411	Spud date: 12-JUL-1979
Longitude:	-59.10853	Rig release: 27-SEP-1979
Well Class:	EXPLORATORY	RT: 24 m
Status:	P&A	Waterdepth: 1000 m
Operator:	ESSO-H.B.	TD: 3998 m

The Esso- Hudson's Bay Gjoa G-37 well was the first wildcat drilled offshore in the Davis Strait region. The well is located on a prominent bathymetric high that recent regional seismic mapping shows to be part of the extinct Eocene spreading ridge complex that is readily visible on regional gravity mapping. About 1300 m of Paleocene basalt flows are interbedded with marine shales, evidence of the high degree of tectonic activity that occurred prior to the Oligocene. To the west the large buried mound feature within the Cartwright section is due to compression along the fault and possible sediment remobilisation associated with hydrothermal vent activity.



Pressure plot and petro physical analysis: The data shown in the pressure plot are all from Basin Database. Shown are in the first column the lithology; in the second one the formation names and the pressures available from mud logs and tests; in columns 3 and 4 log plots to test based on shale content from gamma ray if there are remnants of overpressures - shown as doglegs on the log plots -, and in 5 and 6 from lithological descriptions; column 7 shows maturity data from vitrinite measurements if available.

REFERENCES

Avery, M.P. 2004: Vitrinite reflectance data for ESSO-H.B. Gjoa G-37. Geological Survey of Canada Open File 4843, 14 p.

Bujak Davies Group 1987: Biostratigraphy and Maturation of 17 Labrador and Baffin Shelf wells; Volume 3: Gilbert F-53 and Gjoa G-37. GSC Open File Report 1931, 85 p.

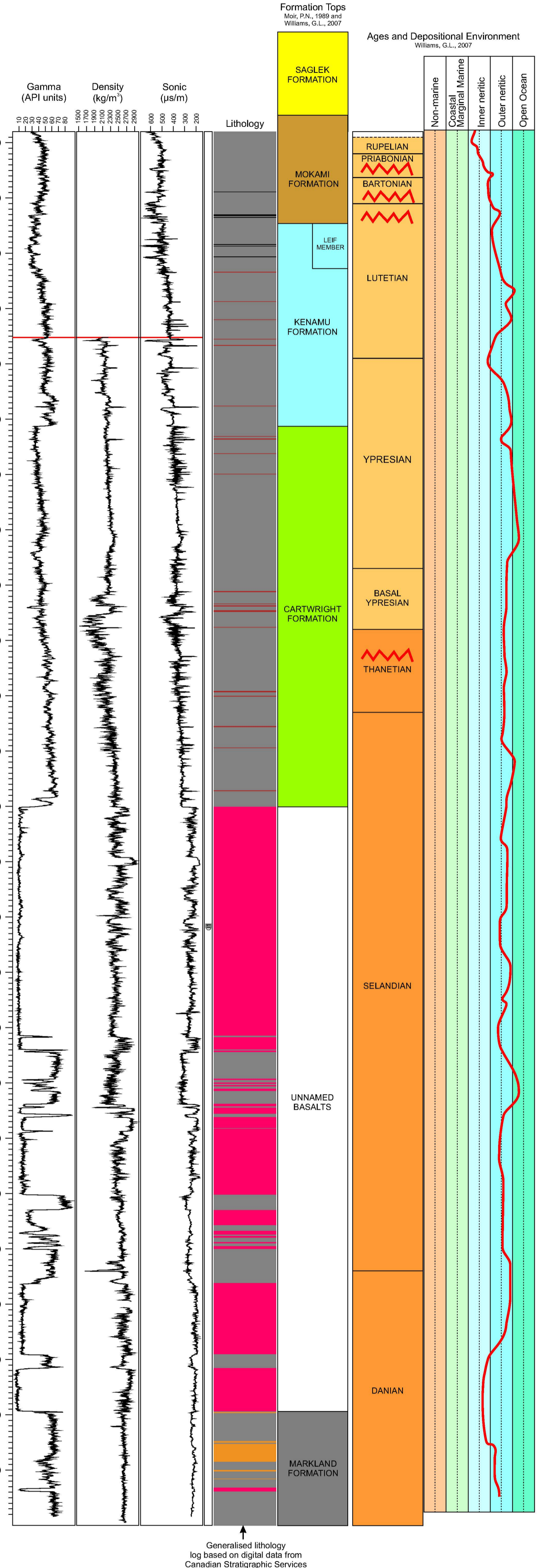
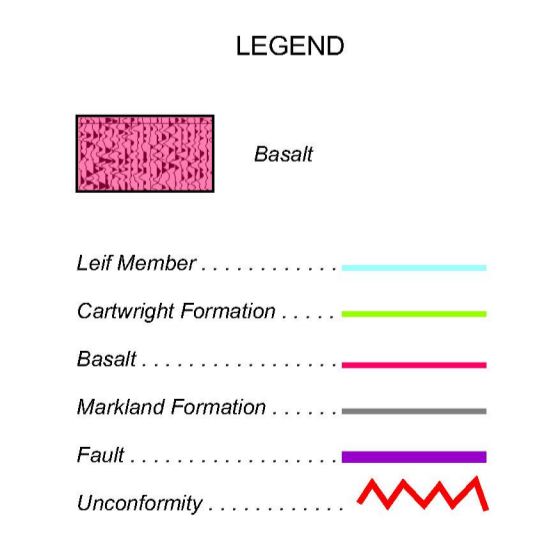
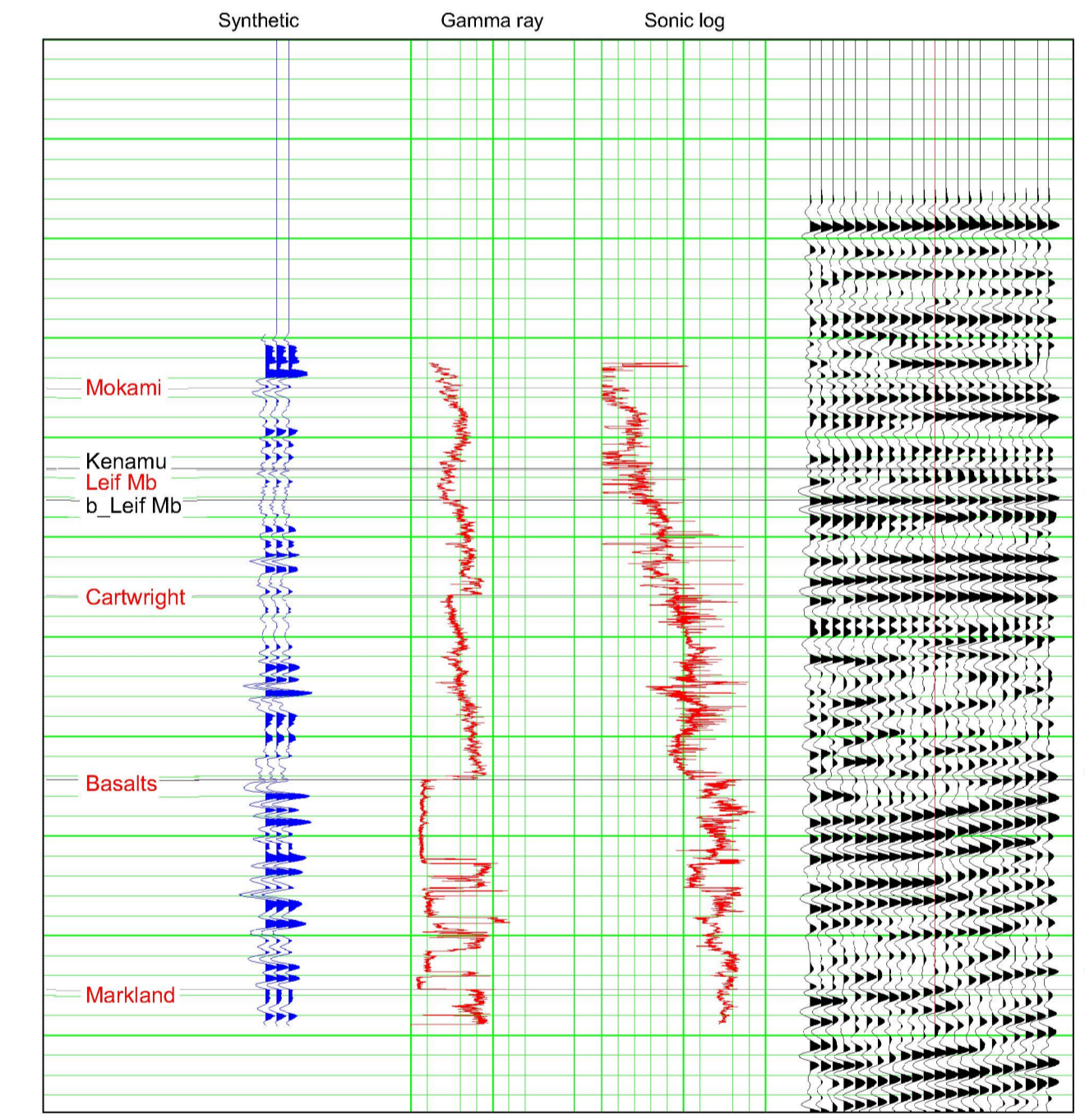
Cartwright, J., et al 2007: Seal Bypass Systems; AAPG Bull., v. 91, no. 8

Klose, G.W., et al 1982: Petroleum Exploration Offshore Southern Baffin Island, Northern Labrador Sea, Canada; Canadian Society of Petroleum Geologists Memoir, no. 8

Miller, P.E. and D'Eon, G.J. 1987: Labrador Shelf - Paleoenvironments; GSC Open File 1722, 186 p.

Mor, P.A. 1969: Stratigraphic picks, Esso H.B. Gjoa G-37, Report No. EPGSS-STRAT-34-87PMM, 2 p., Internal Report - Marine Resources Geoscience Subdivision, Geological Survey of Canada (Atlantic)

Williams, G.L. 2007: Petrological analysis of Esso-H.B. Gjoa G-37, Saglek Basin, Davis Strait. Geological Survey of Canada Open File Report 5449, 15p. (1 sheet)



OPEN FILE DOSSIER PUBLIC 5910

GEOLOGICAL SURVEY OF CANADA / COMMISSION GÉOLOGIQUE DU CANADA

2009

SHEET 1 OF 6 / FEUILLET 1 ET 6

Hydrocarbon prospectivity of Davis Strait and Labrador Shelf: seismic setting and stratigraphy for Gjoa G-37, Hekja O-71, Rut H-11, Gilbert F-53, Karlsefni A-13, and Skolp E-07

Authors: C. Jauer, H. Wielens, and G. Williams