

DESCRIPTIVE NOTES

INTRODUCTION
Placentia Bay is a major embayment on the west coast of the island of Newfoundland. This map details one of the main features of the bay...

Table 1. Remarks on surveys carried out in the study area. Columns include Year, Survey, and Remarks.

DATA DISPLAY
Artificial sun illumination from 045° azimuth and 45° inclination was applied in the GRASS GIS. Vertical exaggeration is x10. A colour palette was applied to the bathymetric data...

MORPHOLOGY
The region is topographically complex, and shows evidence of strong bedrock structural control, together with the effects of glacial and modern geomorphic processes...

Western Channel
Western Channel is a glacially overstepped trough. In the deeper parts of the channel (site A) the seabed is smooth but has low bathymetric relief...

Central Channel
Central Channel is narrow and shallow in comparison with the channels to either side of it. The seabed of the channel is occupied by fine-grained mud, with nodules of glauconite...

Eastern Channel
The general trough of Eastern Channel is more than 100 m deep in places. As elsewhere, the deeper areas have a smooth seabed, due to the presence of fine-grained mud...

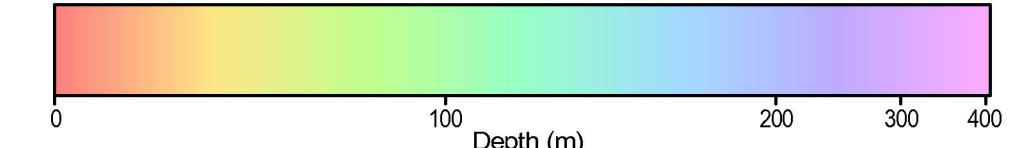
The head of the bay
This area is north of the tip of Grand Point, near Armistice Cove. This region was extensively surveyed using geophysical systems in 1992...

ACKNOWLEDGMENTS

Most surveys were carried out with the collaboration of the Canadian Hydrographic Service. In particular the authors acknowledge the crew of the R/Vs S.S. Stirling, St. John, and St. Lawrence...

REFERENCES

Boyer, D.P. and Shaw, J. 2006. Shaded seafloor relief, Placentia Bay, Newfoundland and Labrador. Geological Survey of Canada Map 2143A, scale 1:50 000.



Map title: MAP 2143A SHADED SEAFLOOR RELIEF PLACENTIA BAY NORTH OFFSHORE NEWFOUNDLAND AND LABRADOR. Includes scale, projection info, and contact details.

