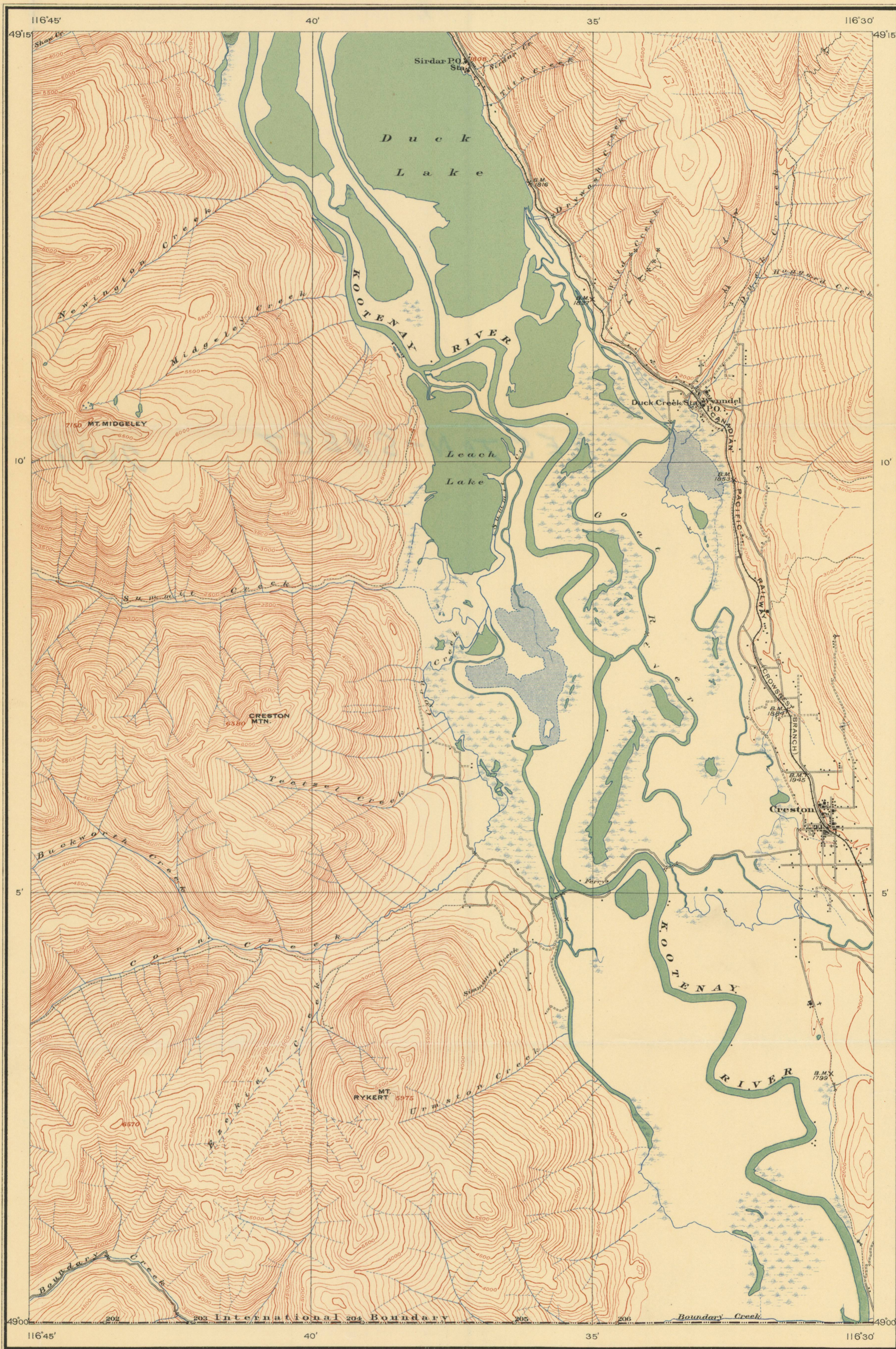


Canada  
Department of Mines

HON. CHARLES STEWART, MINISTER; CHARLES CAMSELL, DEPUTY MINISTER.

GEOLOGICAL SURVEY  
W. H. COLLINS, DIRECTOR.

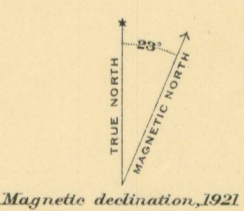
Issued 1925



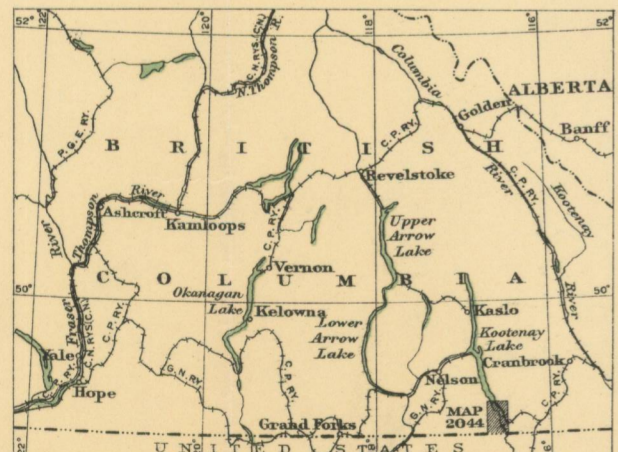
LEGEND

- Roads and buildings
- Road, poor
- Trail
- Railway
- Bridge
- Church
- School
- Post office
- Cemetery
- Mine tunnel
- Prospect
- Bench mark
- Boundary monument
- Intermittent stream
- Intermittent lake
- Stream (position approximate)
- Marsh
- Contours
- Contours (position approximate)
- Height in feet

Elevations referred to Mean sea level

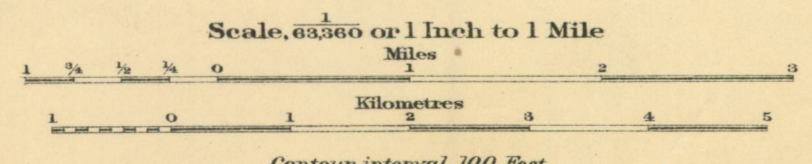


Publication No 2044  
Price, 10 cents.



Scale, 1 Inch to 100 Miles

**CRESTON SHEET**  
(EAST HALF)  
KOOTENAY DISTRICT  
BRITISH COLUMBIA



TOPOGRAPHY  
W. H. Boyd, Chief Topographical Engineer.  
Surveys and topography by R. Bartlett, 1921, 1922.

This document was produced by scanning the original publication.  
Ce document est le produit d'une numérisation par balayage de la publication originale.