

Canada  
Department of Mines

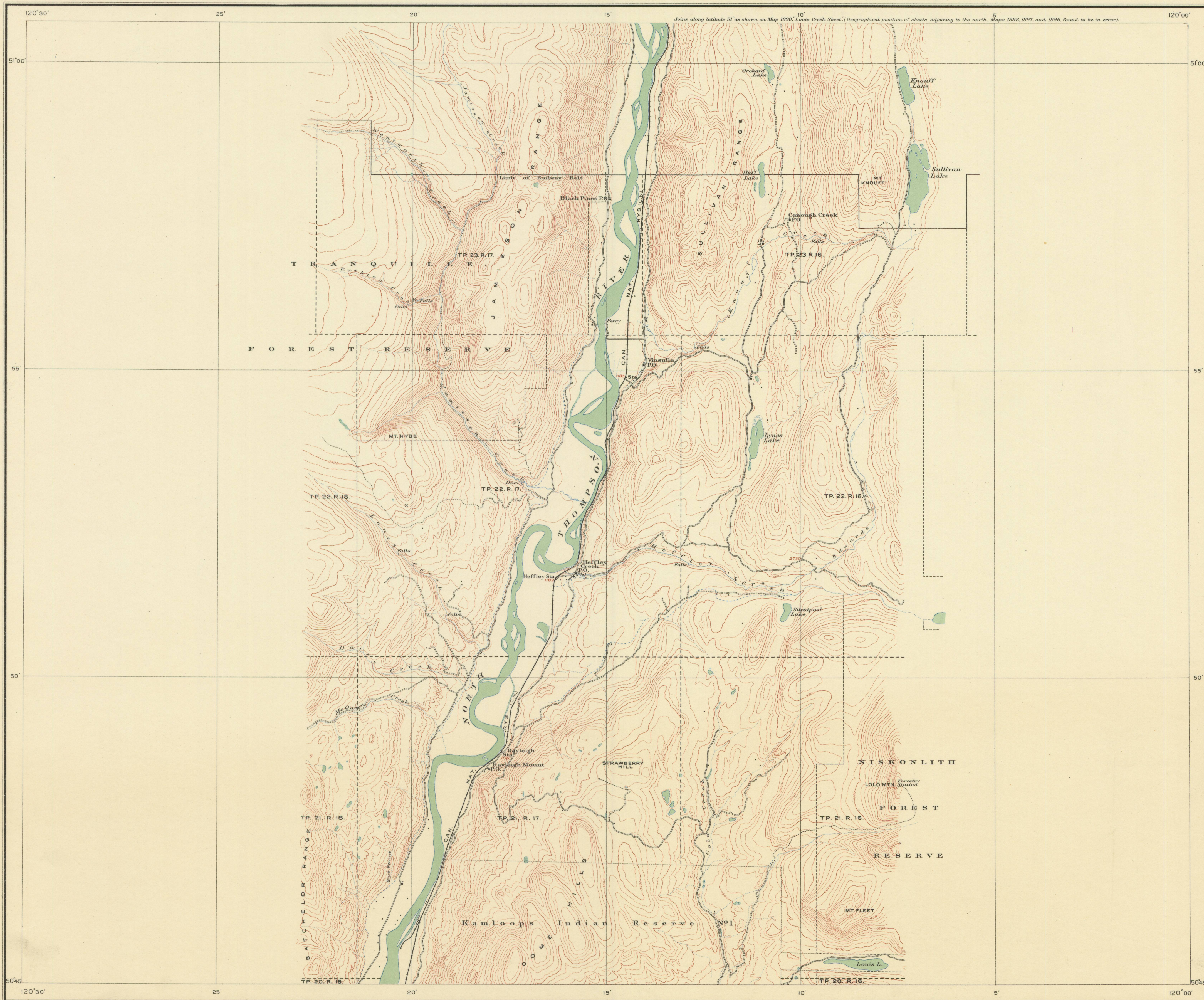
HON. CHARLES STEWART, MINISTER; CHARLES CAMSELL, DEPUTY MINISTER.

GEOLOGICAL SURVEY

W. H. COLLINS, DIRECTOR.

Issued 1925

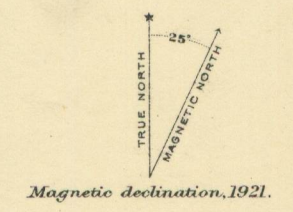
*Joins along latitude 51° as shown on Map 1996, Louis Creek Sheet. Geographical position of sheets adjoining to the north. Maps 1998, 1997, and 1996, found to be in error.*



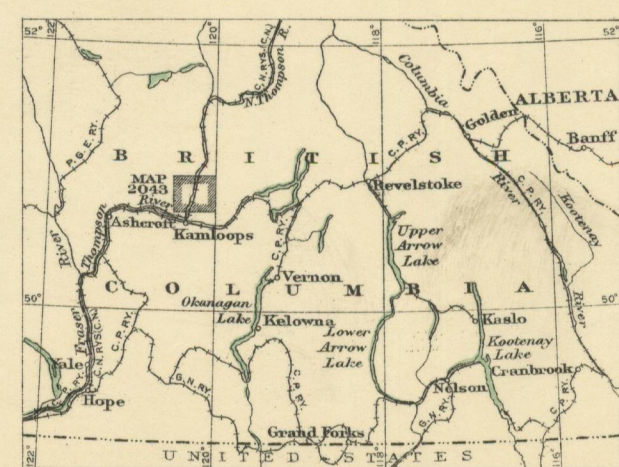
LEGEND

- Roads and buildings
- Road not well travelled
- Trail
- Railway
- School
- Post office
- Shaft
- Prospect
- Township boundary
- Forest Reserve boundary
- Indian Reserve boundary
- Intermittent stream
- Stream (position approximate)
- Irrigation ditch
- Intermittent lake
- Contour (position approximate)
- Depression contour
- Height in feet

*Geographical position based on astronomical station at Kamloops.  
Elevations referred to Mean sea level.*

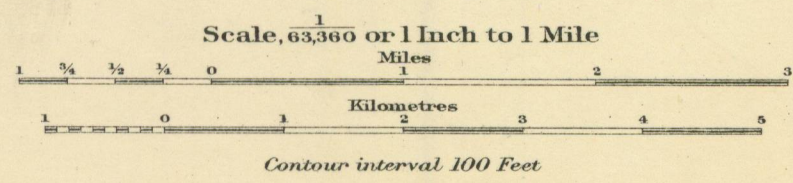


Publication No. 2043  
Price, 10 cents.



Scale, 1 Inch to 100 Miles

**HEFFLEY SHEET**  
(NORTH THOMPSON VALLEY)  
KAMLOOPS DISTRICT  
BRITISH COLUMBIA



TOPOGRAPHY  
W.H. Boyd, Chief Topographical Engineer.  
Surveys and topography by D.A. Nichols, 1921.

This document was produced by scanning the original publication.  
Ce document est le produit d'une numérisation par balayage de la publication originale.