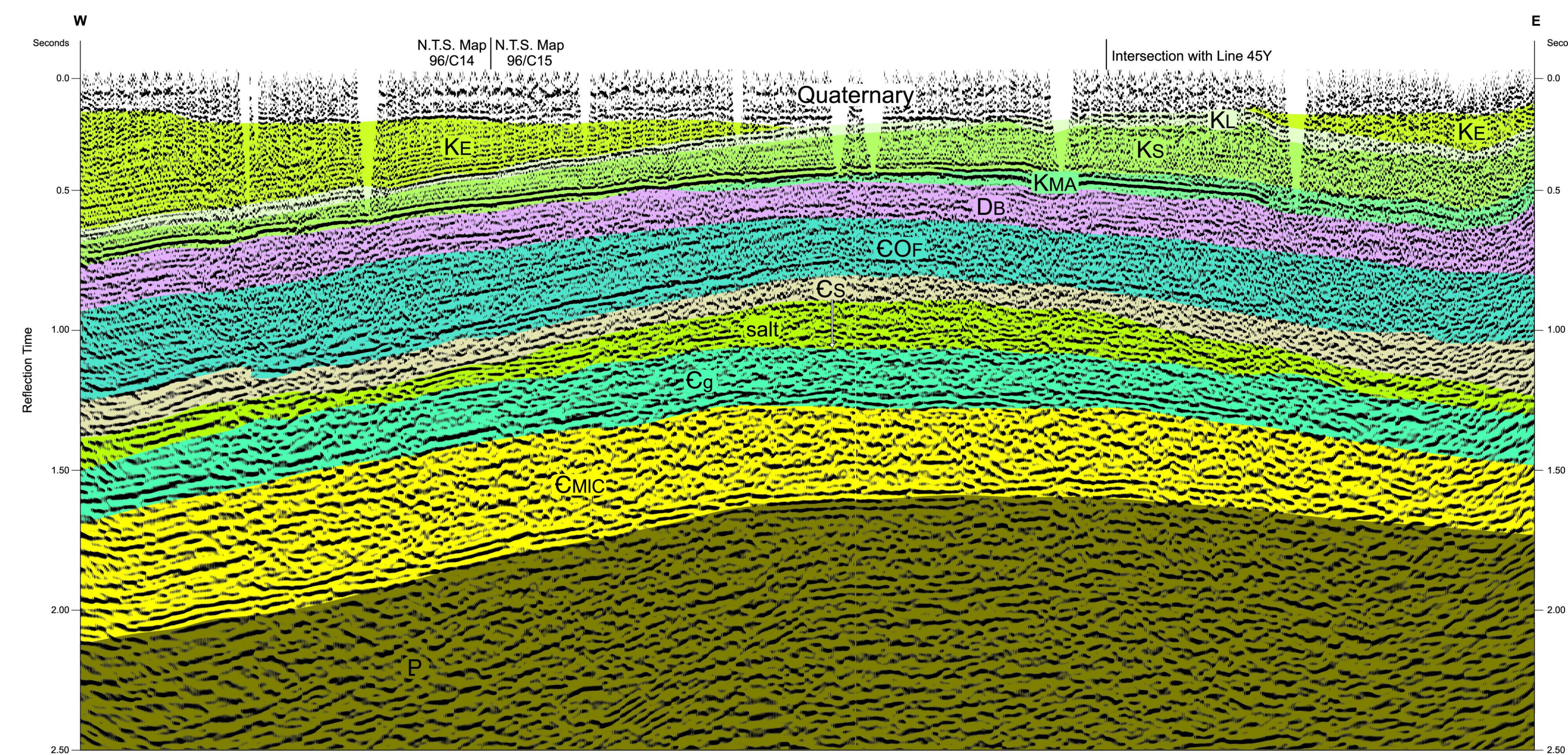
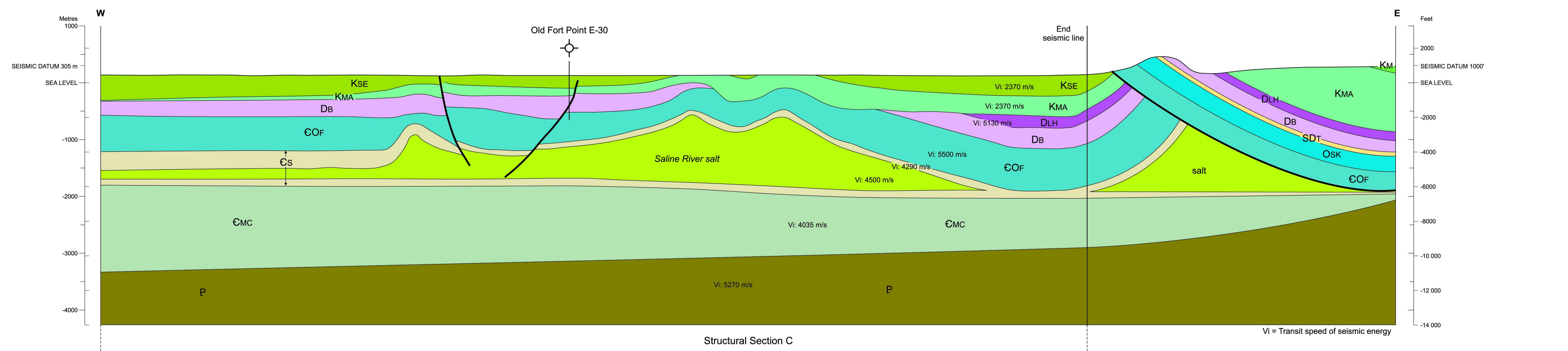
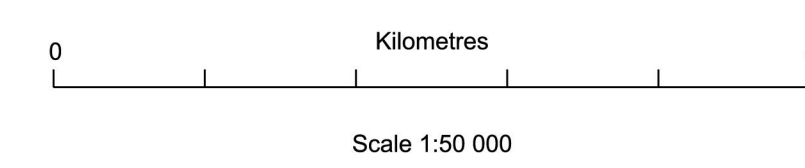


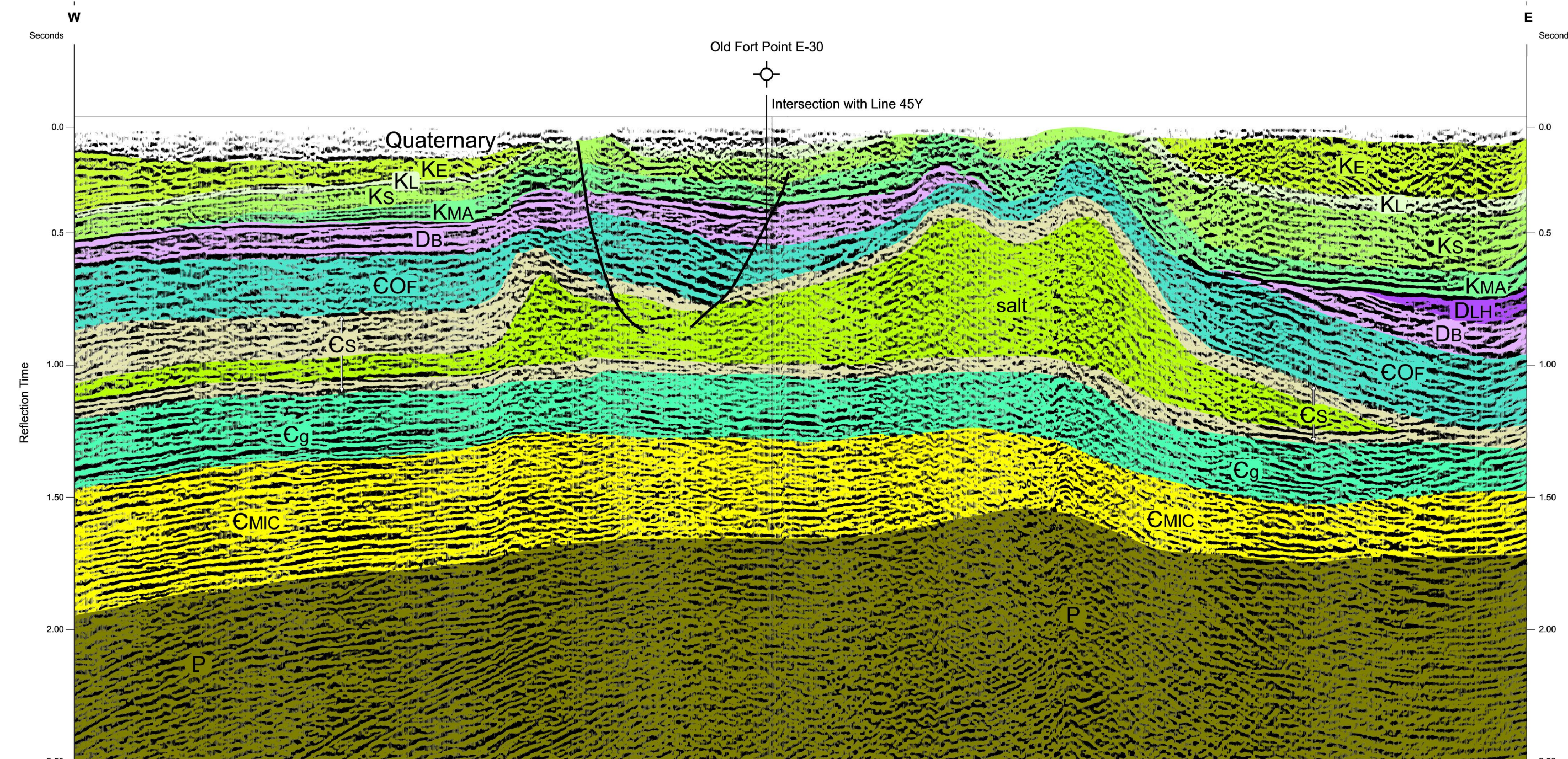
1971 Acquitaine Line 07 | 1971 Acquitaine Line 14 | Transect A: 1971 Acquitaine Lines 07 and 14



Transect B: 1971 Acquitaine Line 04



Structural Section C | Vi = Transit speed of seismic energy



Transect C: 1992 Chevron Line 46X

OPEN FILE
DOSSIER PUBLIC
5466
GEOLOGICAL SURVEY OF CANADA
COMMISSION GÉOLOGIQUE DU CANADA
2009
SHEET 2 OF 2
FEUILLET 2 DE 2

Open files are products that have not gone through the GSC formal publication process.
Les dossiers publics sont des produits qui n'ont pas été soumis au processus officiel de publication de la GSC.

Sections accompany map in OF5466
Recommended citation:
Cook, D.G., MacLean, B.C., and Morrow, D.W.
2009: Geology, St Charles Creek, Northwest Territories, Geological Survey of Canada, Open File 5466, scale 1:50 000.