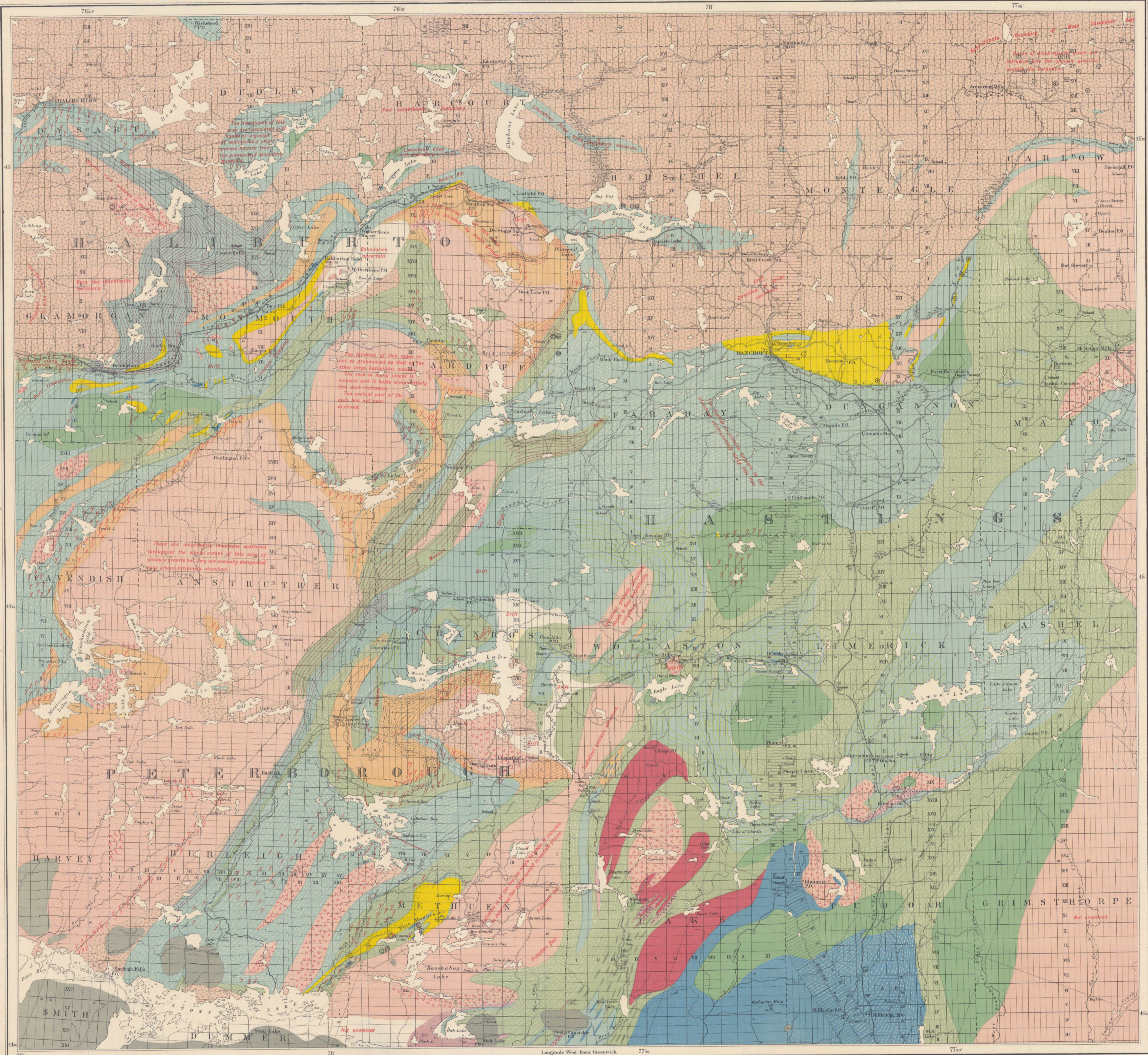


Explanation of Colours and Signs

- Cambro-Silurian**
- Black River.
- Archean**
- Blue limestone.
 - White crystalline limestone.
 - Limestone and granular amphibolite.
 - Limestone and "feather" amphibolite.
 - Limestone invaded by much granite. (Contains admixture of amphibolite).
 - Gneiss (probably altered sedimentary material) or quartzite.
 - Gneiss (sedimentary) invaded by much granite.
 - Conglomerate, sandstone and arkose.
 - Claystones (often siliceous and calcareous with admixture of volcanic material).
 - Amphibolite and gneiss bands.
 - Amphibolite.
 - Gabbro and diorite.
 - Gneissic granite with many amphibolite inclusions.
 - Granite (massive).
 - Gneissic granite.
 - Pegmatite dykes.
 - Acid volcanic rocks (tuff etc.).
 - Nepheline syenite and associated alkali-syenite.
 - Spheline syenite etc. with inclusions of amphibolite.
- Strike and dip**
- Vertical.
 - Faults.
 - Contours.
 - Elevations in feet above sea level.
 - Water levels.
- Mineral Occurrences**
- Iron.
 - Lead.
 - Mica.
 - Quartz.
 - Spate.
 - Graphite.
 - Molybdenite.



C.S. Simons, F.A.S., Geographer & Chief Draughtsman.
 J. Reid & L.S. Richard, Draughtsmen.

GEOLOGICAL MAP
 of portions of
 HASTINGS, HALIBURTON and PETERBOROUGH COUNTIES,
 PROVINCE OF ONTARIO.
 (Bancroft Map)

by
 FRANK D. ADAMS, Ph.D. and ALFRED E. BARLOW, D.Sc.

Scale, 2 statute miles to 1 inch = 128,750

Sources of Information
 Instrumental survey by Messrs. A.E. Barlow, J. Reid,
 J. White, A. Cole and L.S. Richard of the Geological Survey.
 Plans of surveys by the Department of Crown Lands of Ontario.

No. 770
 Price 10 cts.

Magnetic Declination 8° to 9° West

Accompanying Parts H & BH, Vol. 317

Bancroft (Hastings, Haliburton & Peterborough Cos.)

NOT TO BE TAKEN FROM LIBRARY
 NE PAS SORTIR DE LA BIBLIOTHÈQUE

