

**NOTES**

- Basement (B) is shown in yellow. The B is the Blue Fjord Formation through the range of hills along the west side of the Strathcona Fiord. The B is the Blue Fjord Formation through the range of hills along the west side of the Strathcona Fiord. The B is the Blue Fjord Formation through the range of hills along the west side of the Strathcona Fiord.
- The map shows the location of the B is the Blue Fjord Formation through the range of hills along the west side of the Strathcona Fiord. The B is the Blue Fjord Formation through the range of hills along the west side of the Strathcona Fiord.
- The map shows the location of the B is the Blue Fjord Formation through the range of hills along the west side of the Strathcona Fiord. The B is the Blue Fjord Formation through the range of hills along the west side of the Strathcona Fiord.
- The map shows the location of the B is the Blue Fjord Formation through the range of hills along the west side of the Strathcona Fiord. The B is the Blue Fjord Formation through the range of hills along the west side of the Strathcona Fiord.
- The map shows the location of the B is the Blue Fjord Formation through the range of hills along the west side of the Strathcona Fiord. The B is the Blue Fjord Formation through the range of hills along the west side of the Strathcona Fiord.

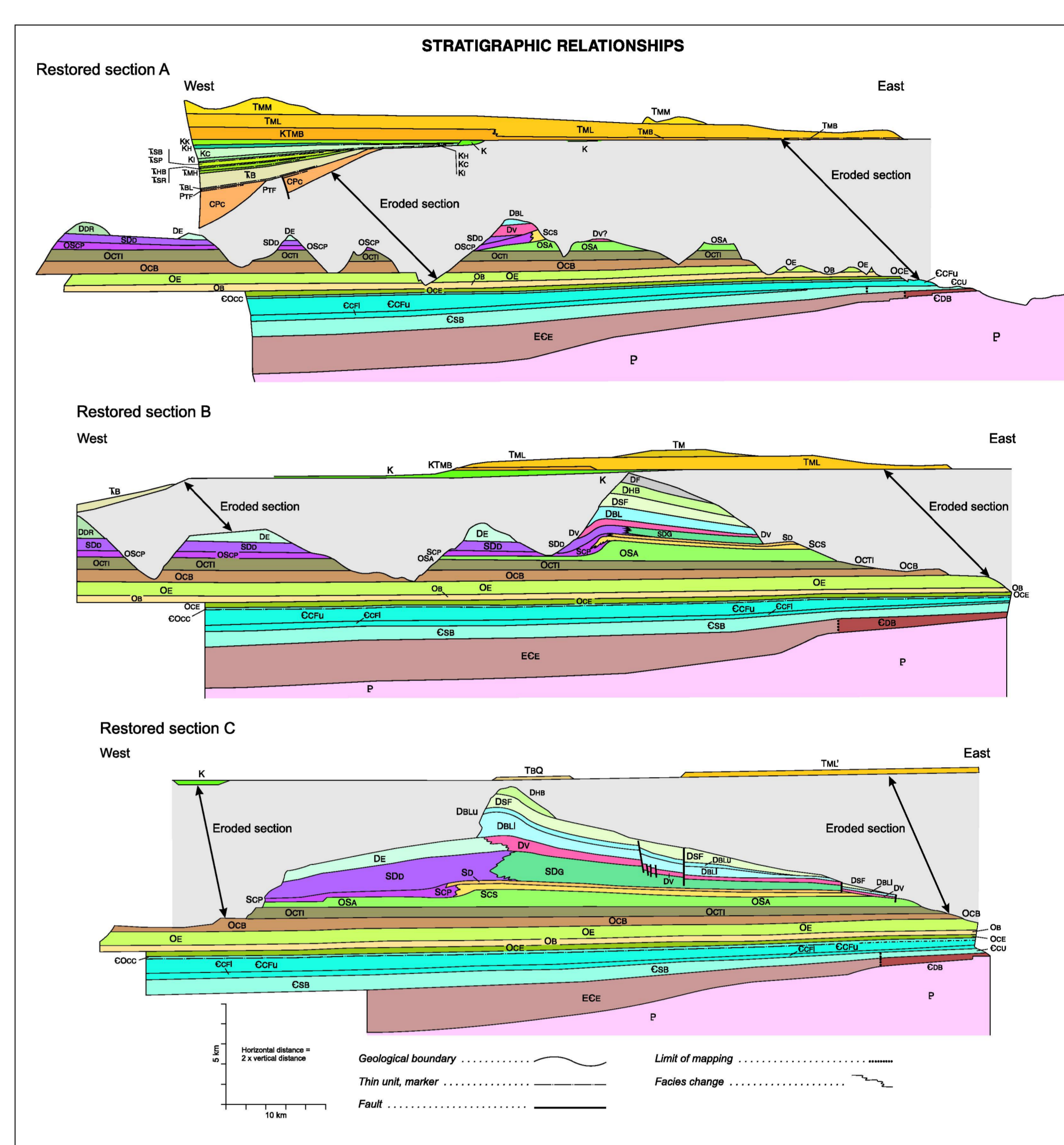
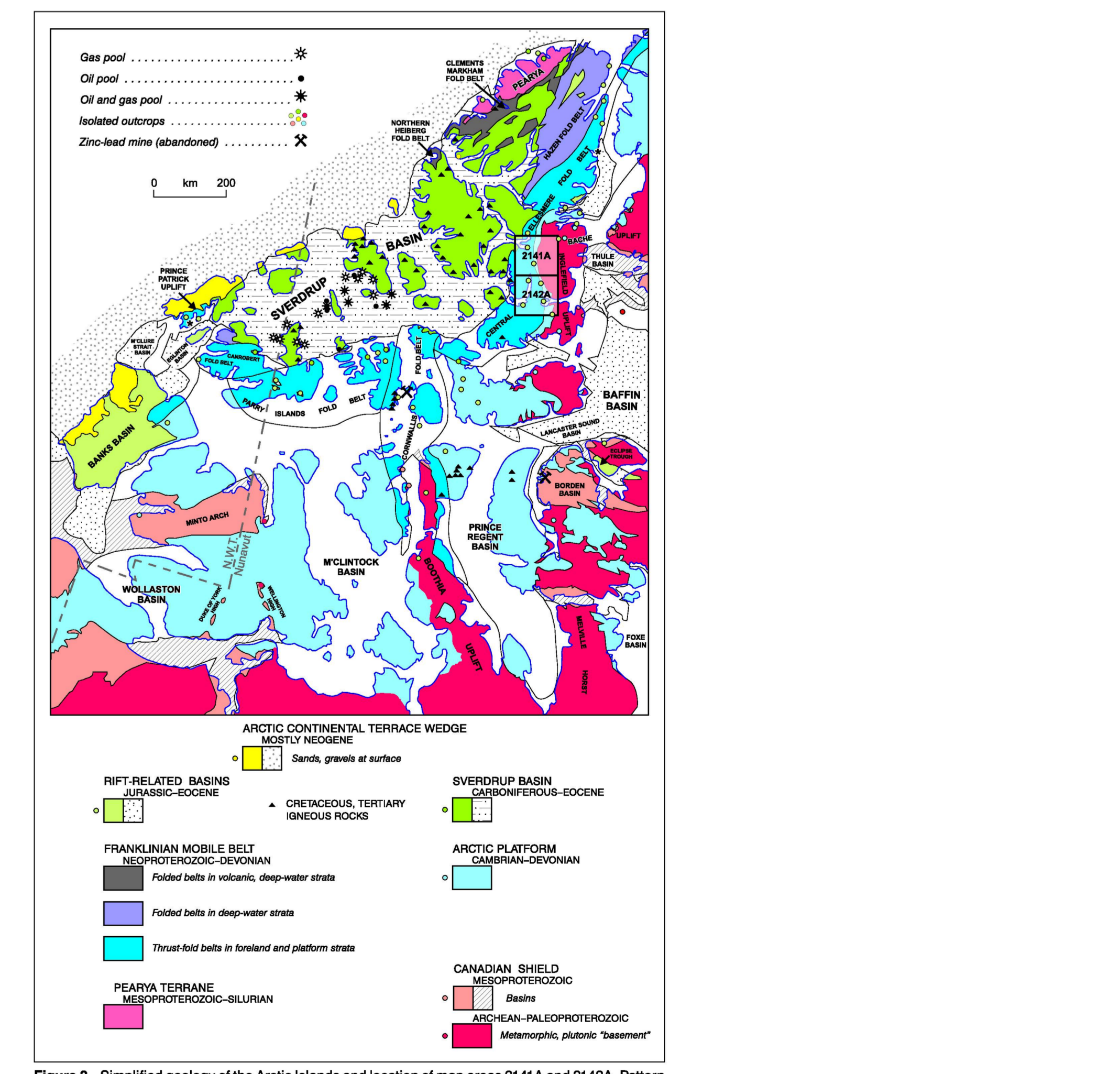


Figure 1. Stratigraphic relationships illustrated along and near lines of cross-sections A, B and C.



**REFERENCES**

Beck, P.H., 1964. Geology of the Strathcona Fiord area, Ellesmere Island, Nunavut. Geological Survey of Canada, Memoir 109, 122 pages.

Beck, P.H., 1967. Geology of the Strathcona Fiord area, Ellesmere Island, Nunavut. Geological Survey of Canada, Memoir 109, 122 pages.

Beck, P.H., 1970. Geology of the Strathcona Fiord area, Ellesmere Island, Nunavut. Geological Survey of Canada, Memoir 109, 122 pages.

Beck, P.H., 1973. Geology of the Strathcona Fiord area, Ellesmere Island, Nunavut. Geological Survey of Canada, Memoir 109, 122 pages.

Beck, P.H., 1976. Geology of the Strathcona Fiord area, Ellesmere Island, Nunavut. Geological Survey of Canada, Memoir 109, 122 pages.

**MAP 2141A**  
**PHANEROZOIC BEDROCK GEOLOGY**  
**STRATHCONA FIORD AREA**  
**ELLESMERE ISLAND**  
**NUNAVUT**

Scale 1:250 000 (1:500 000 at 1:250 000)

Author: J.C. Harrison, R. Thorsen, and T.A. de Freitas  
 Geology by J.C. Harrison, R. Thorsen, and T.A. de Freitas, 1983-2005  
 Geological compilation by J.C. Harrison, 2008  
 Digital cartography by M.J. Coulter, Data Dissemination Division (DDI)

This map was produced from data that conform to the Standards and Technical Publishing Standards (STPS) of the Geological Survey of Canada, registered to the ISO 9001:2000 standard.

Logistical support provided by the Arctic Continental Shelf Project as part of its mandate to provide scientific research in the Canadian North.

Any reference to other Geological Information Systems in this map is for information only and does not constitute an endorsement or approval by the Geological Survey of Canada.

Digital base map from data compiled by Geomatics Canada, modified by GDD.

Proximity to the North Magnetic Pole (shown in red) is indicated by the magnetic compass rose in this area. Elevation in feet above mean sea level.

Map 2141A is available in French as well.