

MAP 2142A PHANEROZOIC BEDROCK GEOLOGY VENDOM FIORD AREA, ELLESMERE ISLAND, NUNAVUT

Author: R. Thorsheim, J.C. Hartman, and T.A. de Prades. Geological interpretation by J.C. Hartman, 2000. Scale: 1:125 000 (1:50 000).

LEGEND and NOTES. The legend lists geological units from Quaternary to Paleoproterozoic, including descriptions of their lithology and structural features. Notes provide additional geological context and references.

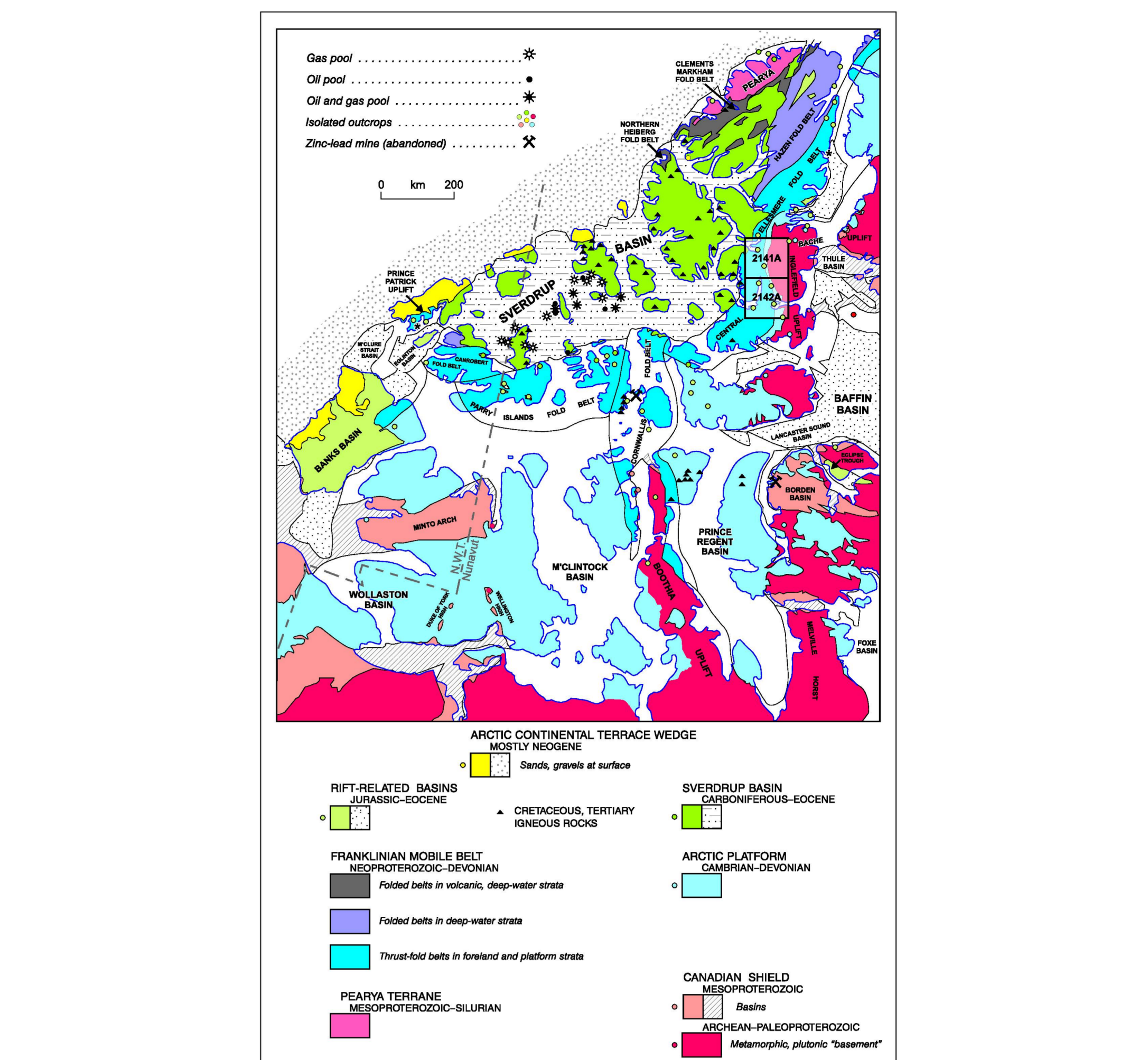
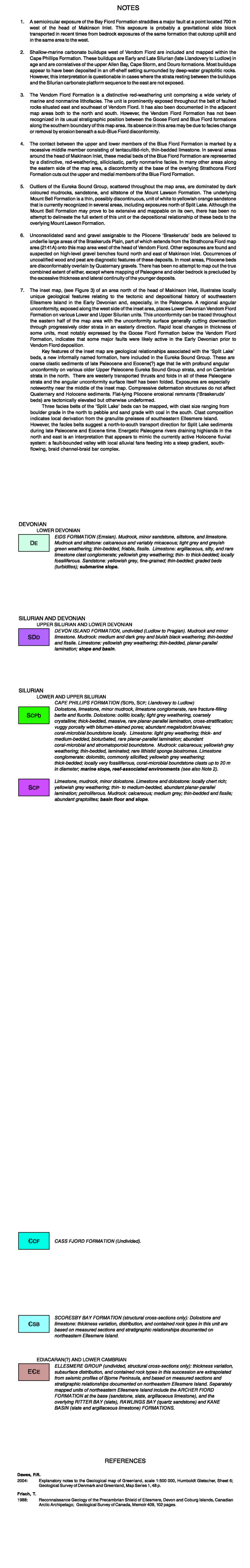


Figure 1. Simplified geology of the Arctic islands and location of map areas 2141A and 2142A. Pattern is the same as for some other units.

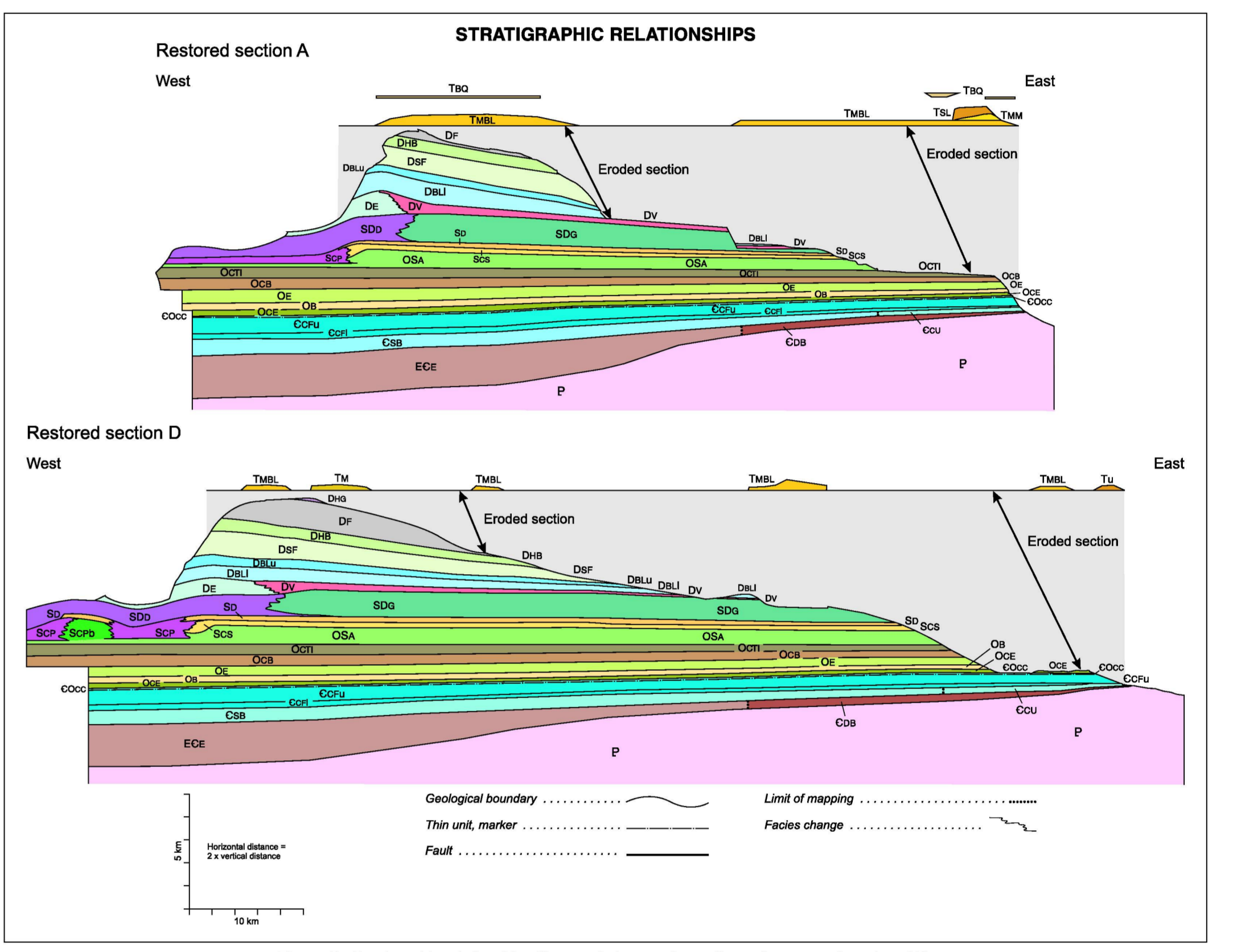


Figure 2. Stratigraphic relationships illustrated along and near lines of cross-sections A and D.

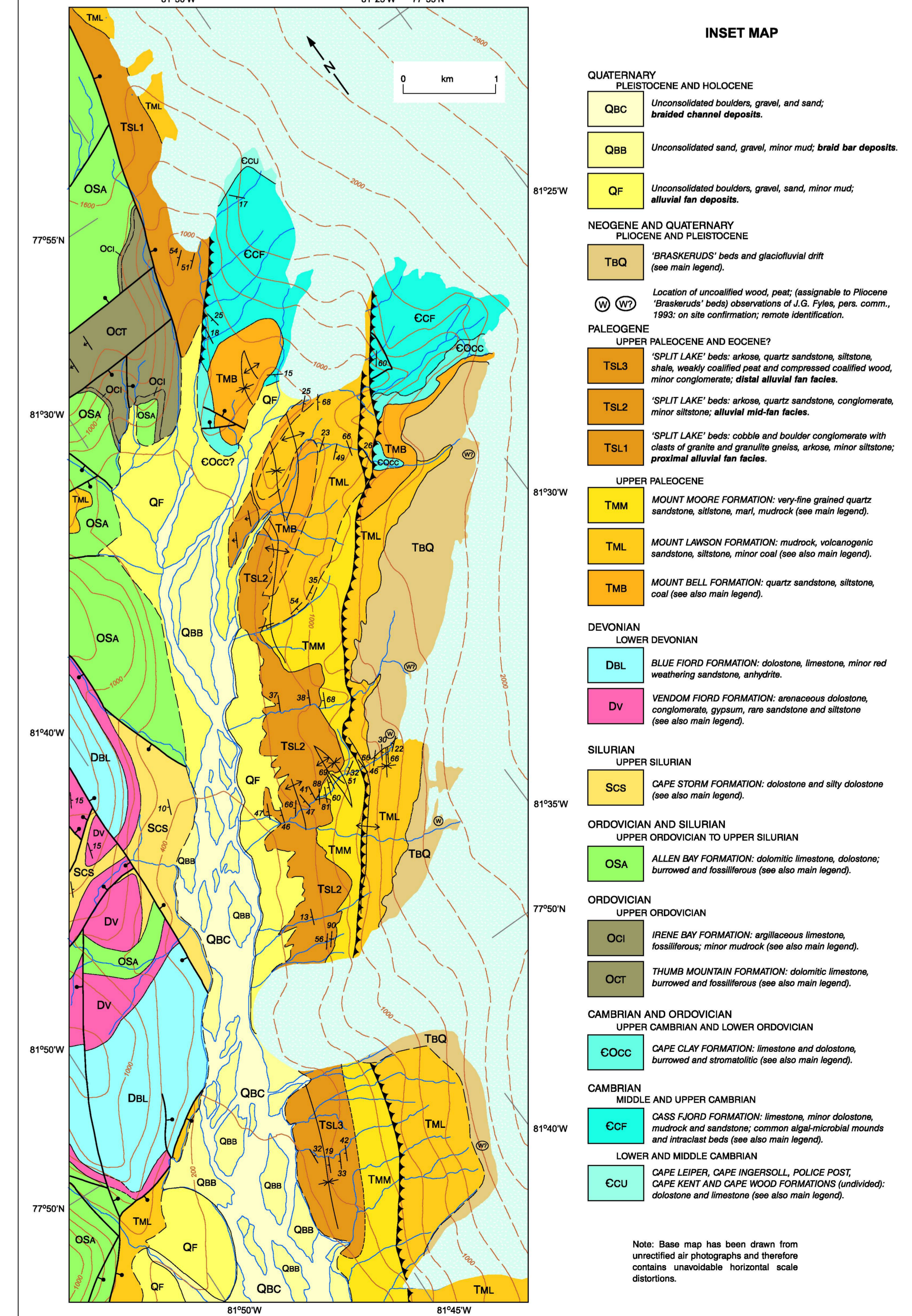


Figure 3. Detailed geology along the west side of Prince of Wales Icefield north of Spiti Lake (see also Note 7).