

DESCRIPTIVE NOTES

The Proterozoic shield of northern Saskatchewan is a complex tectono-stratigraphic province with a long and varied tectonic history...

REFERENCES

Adams, J.R., 1997. The tectonic evolution of the Precambrian Shield of northern Saskatchewan. M.Sc. thesis, University of Saskatchewan.

1.93 Ga Break-up of the East Craton

The East Craton is a large Proterozoic craton in northern Saskatchewan and northern Alberta. It is bounded to the west by the Precambrian Shield...

2-4.3 Ga Anorthositic Orogen in the Rae Province

Widespread mafic and ultramafic rocks in the Rae Province have been attributed to an orogenic event during the western margin of the Proterozoic Shield...

Other Proterozoic Middle Proterozoic Events

Geological events in the Proterozoic Shield of northern Saskatchewan and northern Alberta are summarized in this section...

1.8-1.92 Ga Tethyan Orogen in the Rae Province

The location of nearly ophiolite ophiolite rocks in the Tethyan Orogen is discussed in this section, along with the timing and tectonic evolution...

South of the Athabasca Basin (Figure 4)

South of the Athabasca Basin, the tectonic evolution is characterized by the presence of mafic and ultramafic rocks, and the development of a high-pressure granulite facies assemblage...

1.81-1.88 Ga Metamorphism Associated with the Showdelt Tectonic Zone

The Showdelt Tectonic Zone is a major tectonic feature in northern Saskatchewan. It is characterized by high-grade metamorphism and extensive magmatism...

1.87-1.79 Ga Trans-Hudson Orogen

The Trans-Hudson Orogen is a major tectonic feature in northern Saskatchewan. It is characterized by high-grade metamorphism and extensive magmatism...

LITHOTECTONIC DOMAIN MAP OF THE PROCRAMBRIAN SHIELD OF NORTHERN SASKATCHEWAN

This map shows the lithotectonic domains of the Procrambrian Shield of northern Saskatchewan. The domains are color-coded and labeled according to their geological characteristics.

Metamorphic Zones

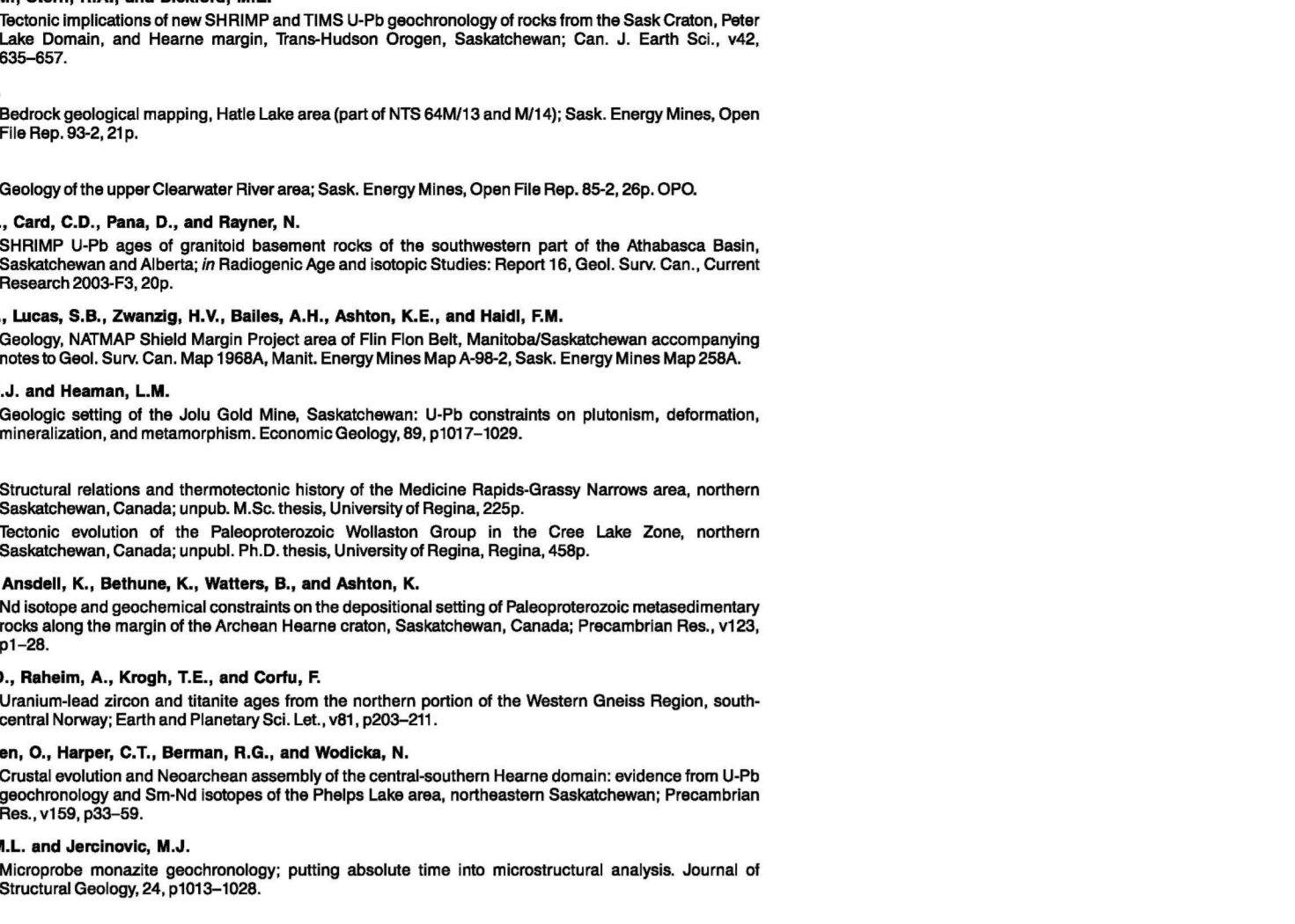
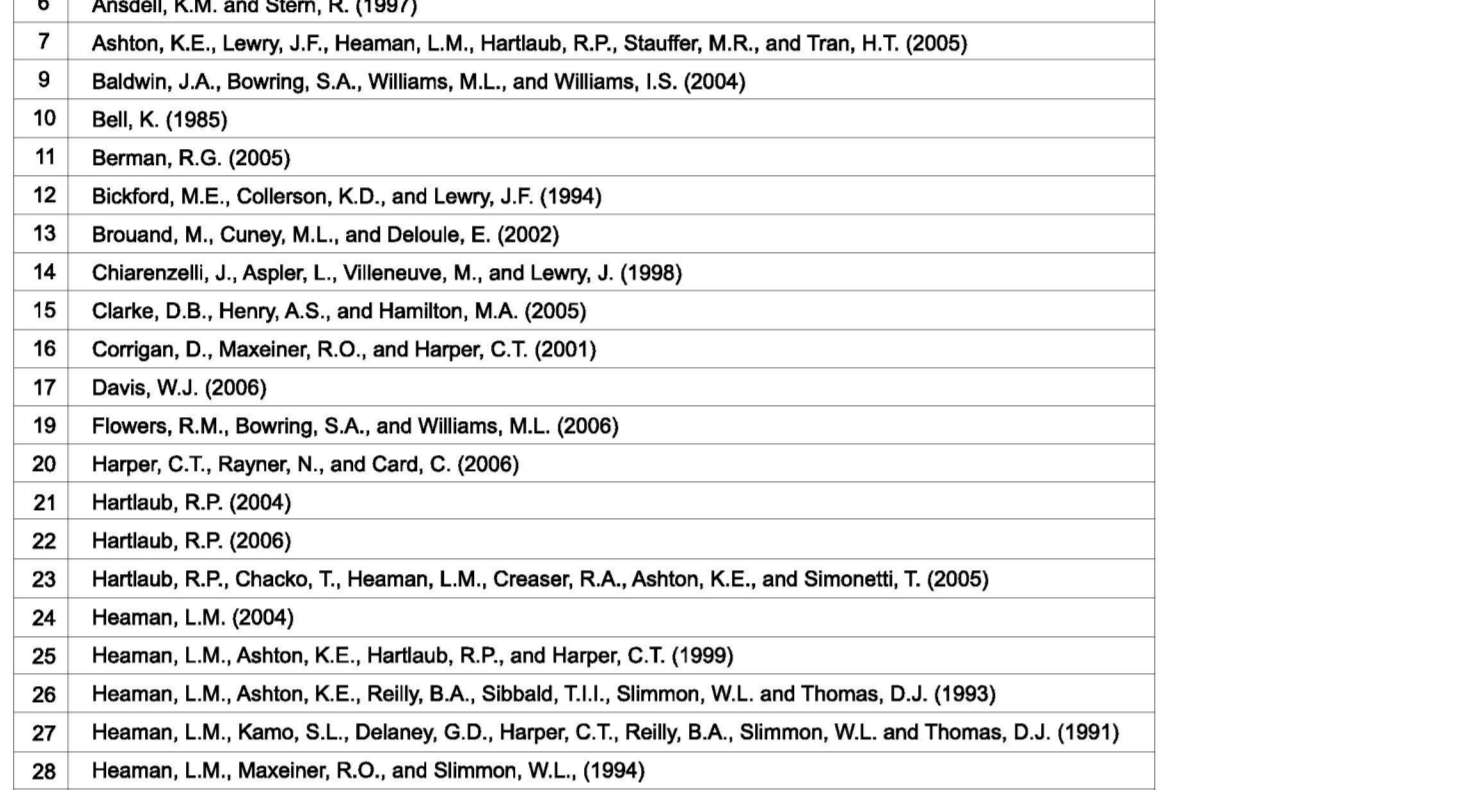
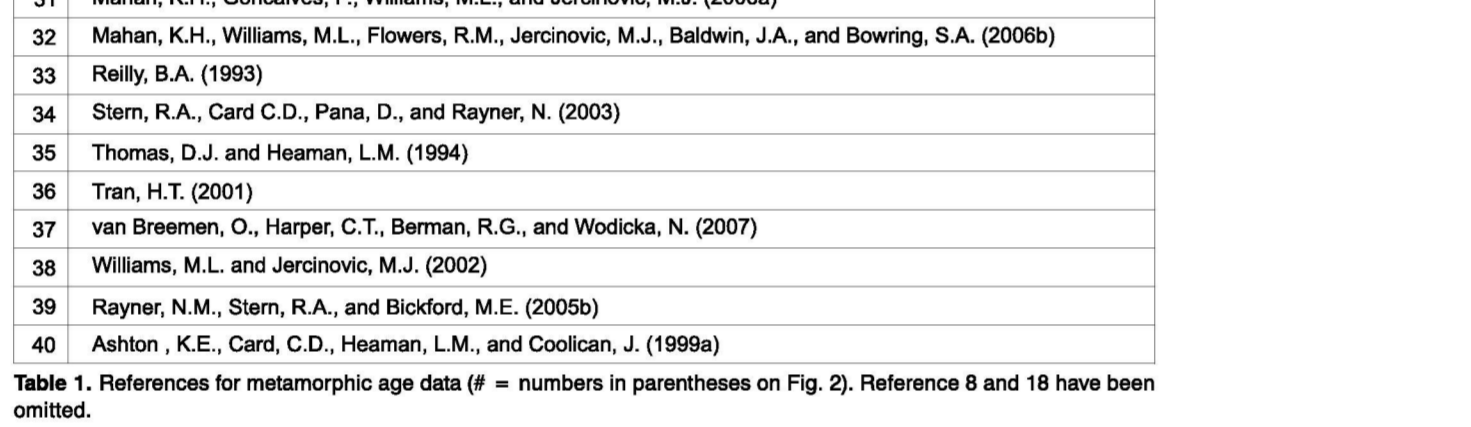


Table with 2 columns: Author (year) and Reference number. Lists authors such as Anselmy, Adams, and others with their corresponding reference numbers.

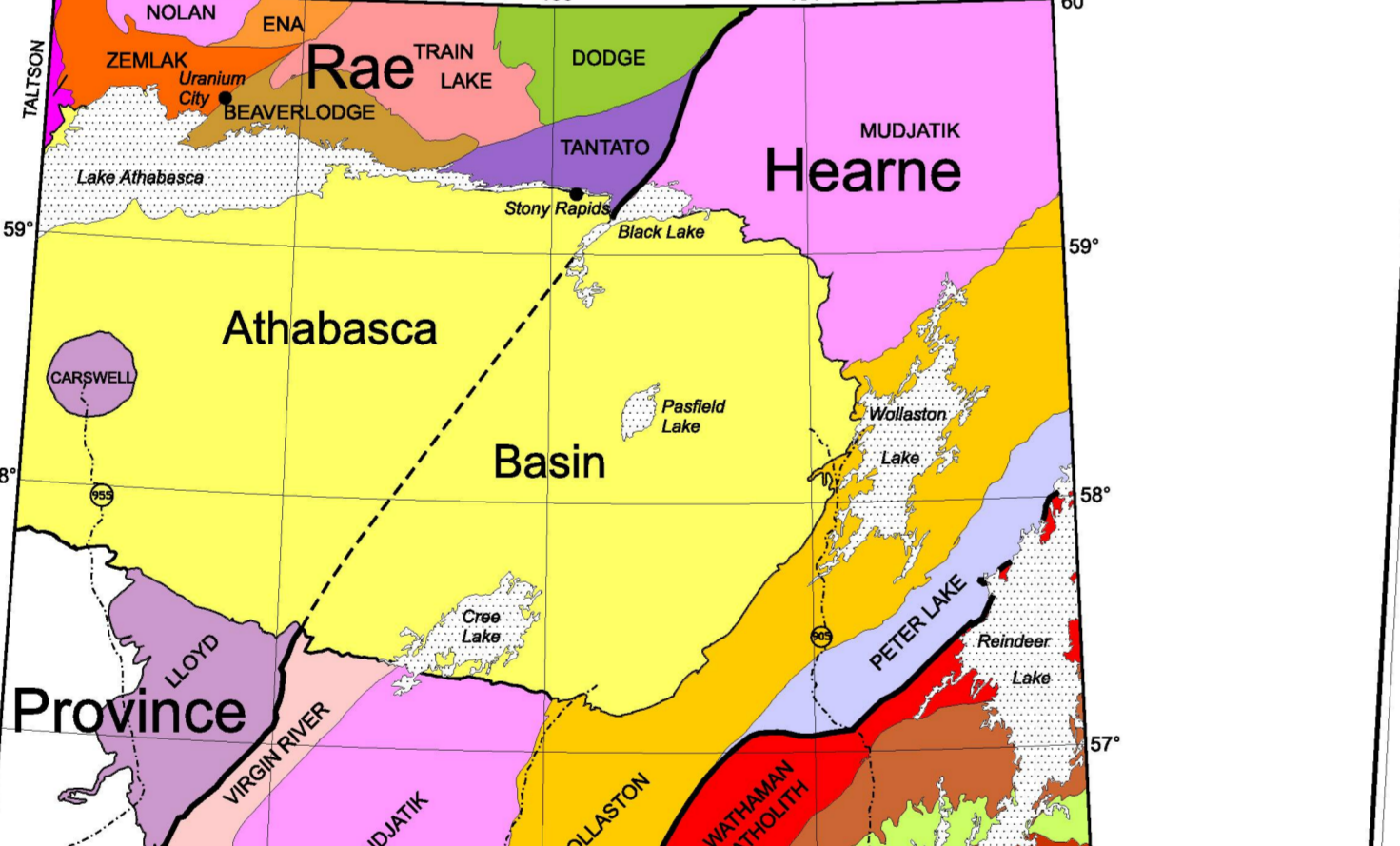
Metamorphic Zones



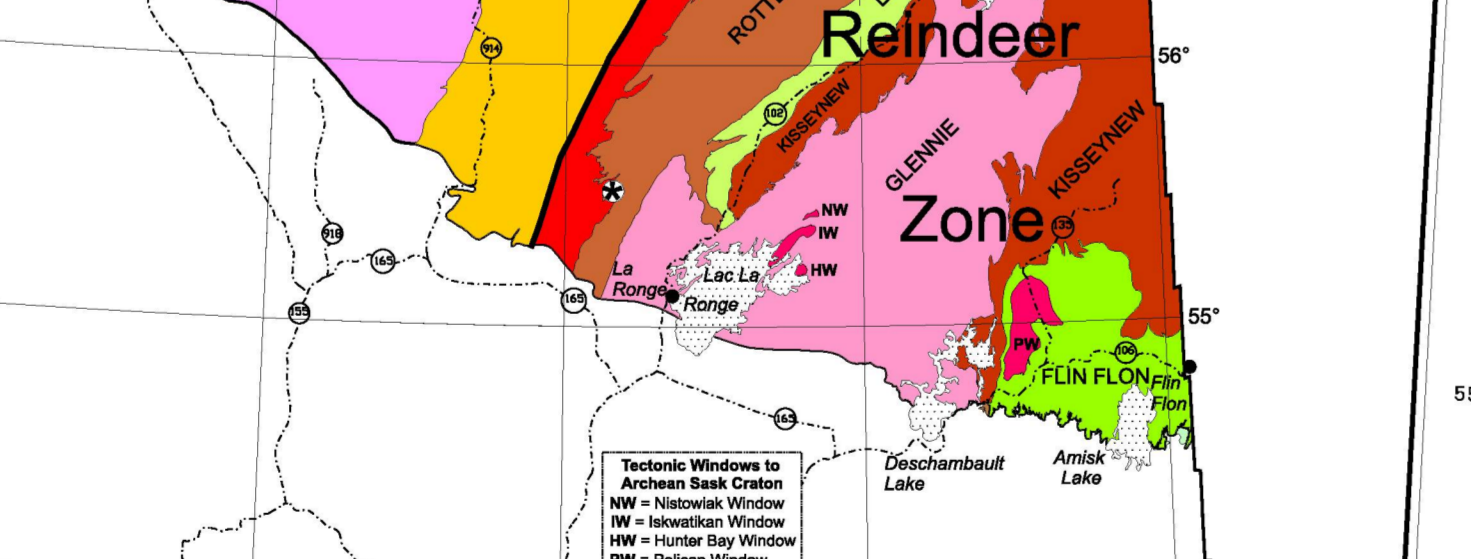
Metamorphic Zones



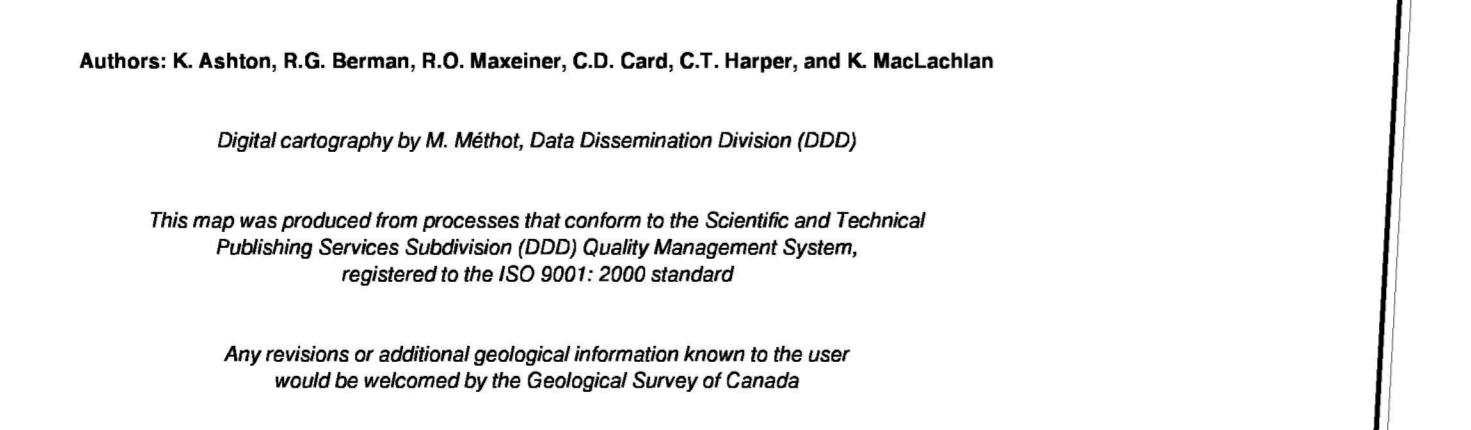
Metamorphic Zones



Metamorphic Zones



Metamorphic Zones



Metamorphic Zones

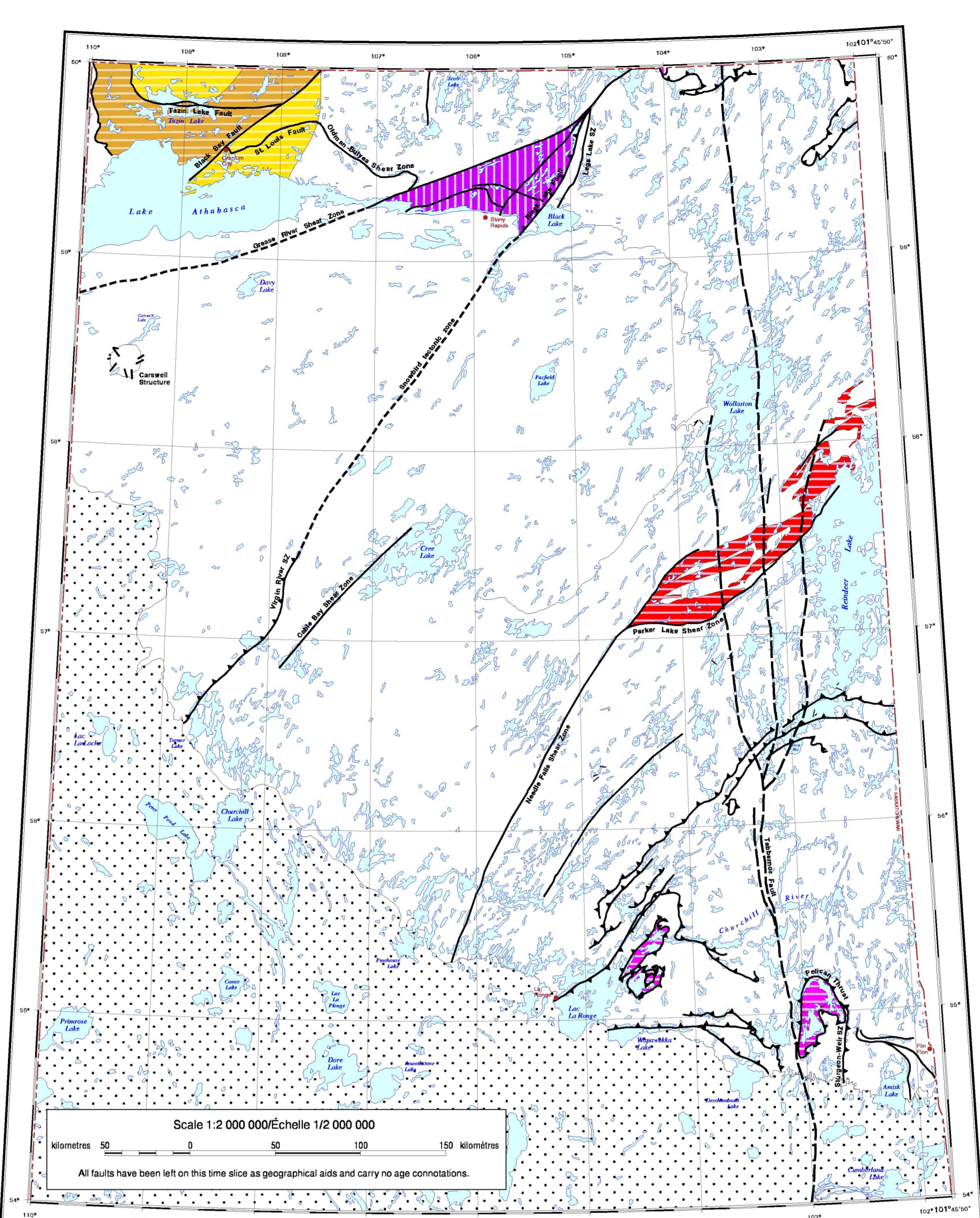
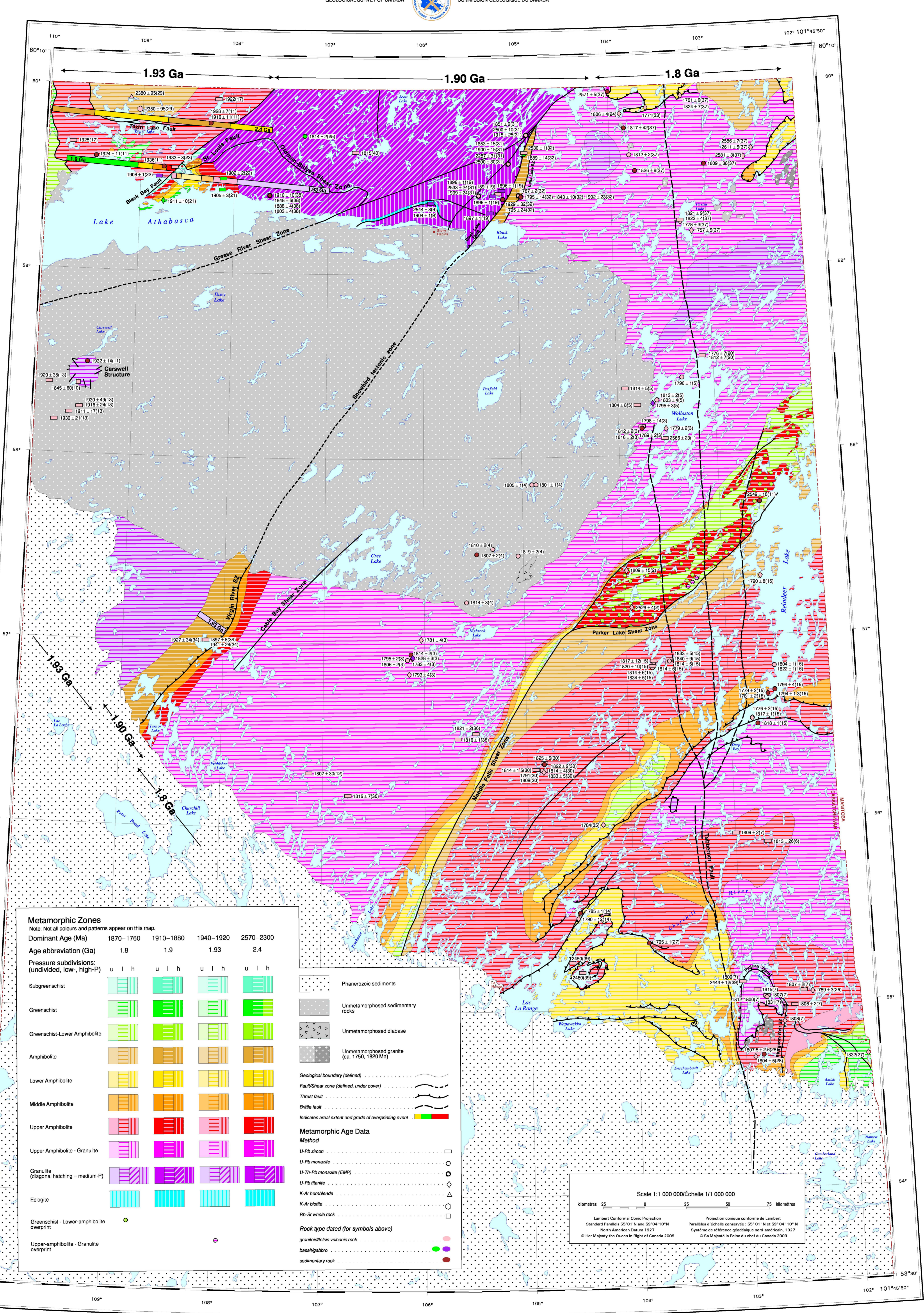
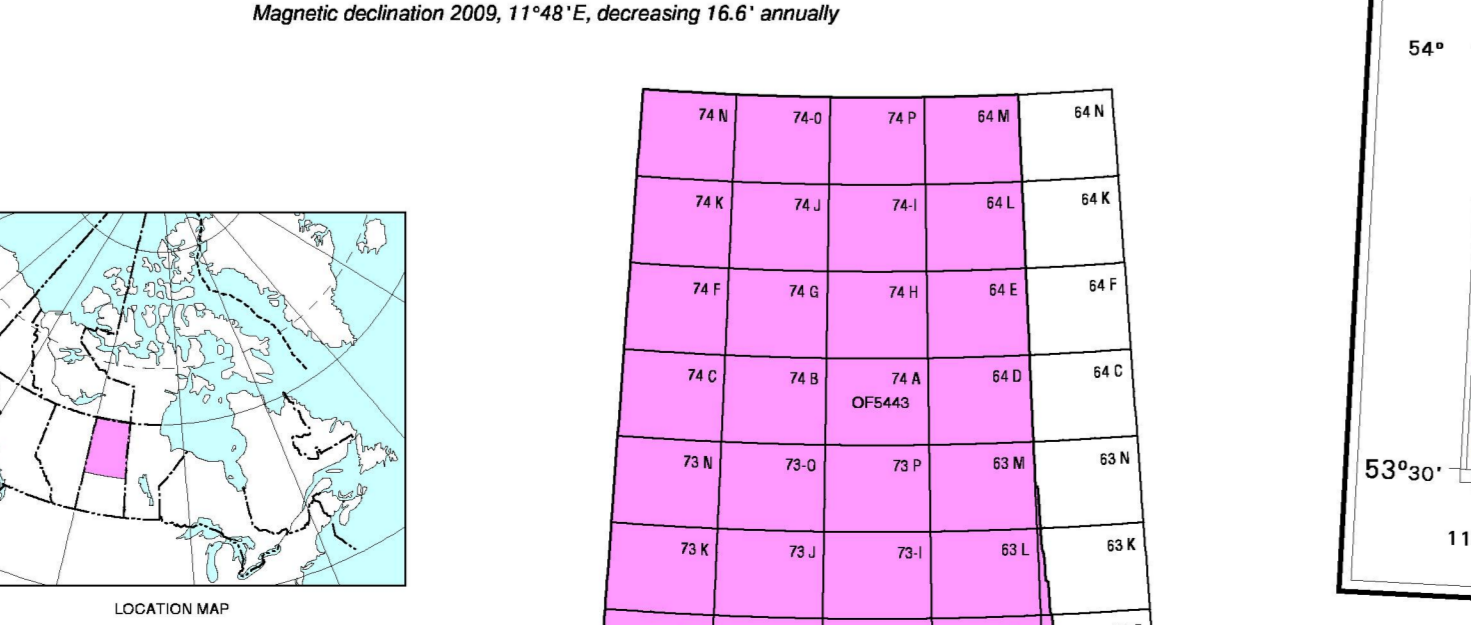


Figure 3. Map showing 2570-2300 Ma metamorphism in northern Saskatchewan.

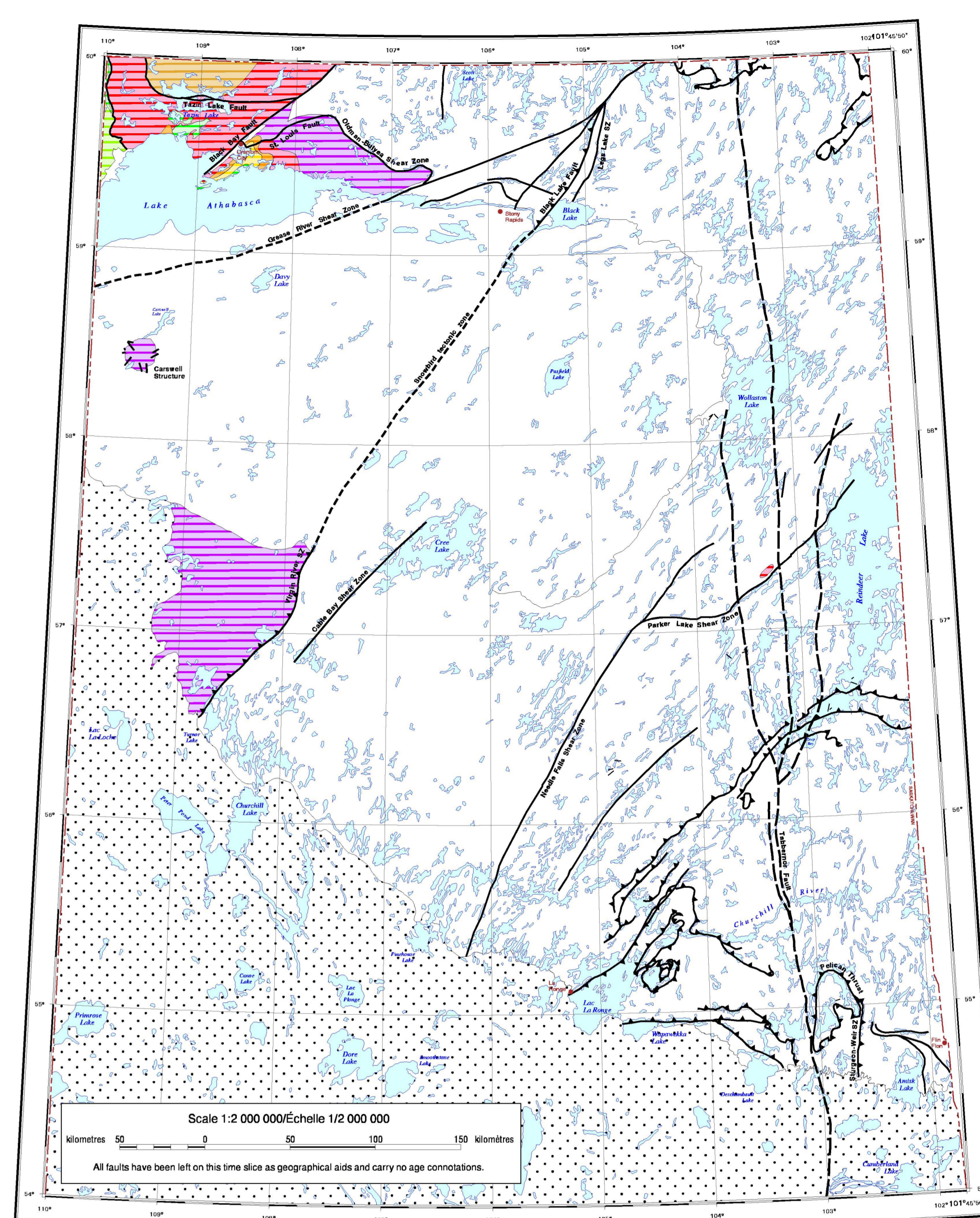


Figure 4. Map showing 1940-1920 Ma metamorphism in northern Saskatchewan.

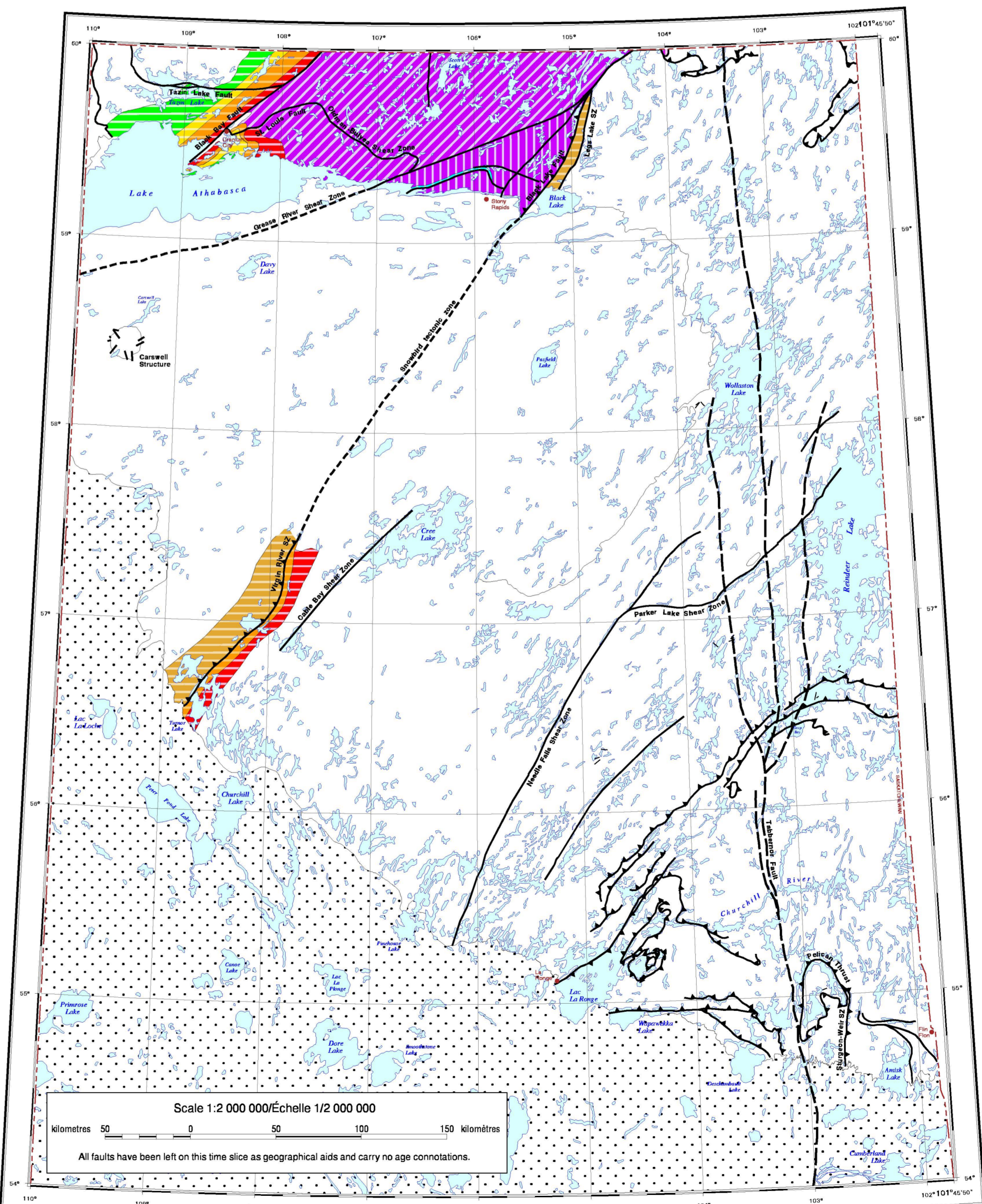


Figure 5. Map showing 1910-1880 Ma metamorphism in northern Saskatchewan.

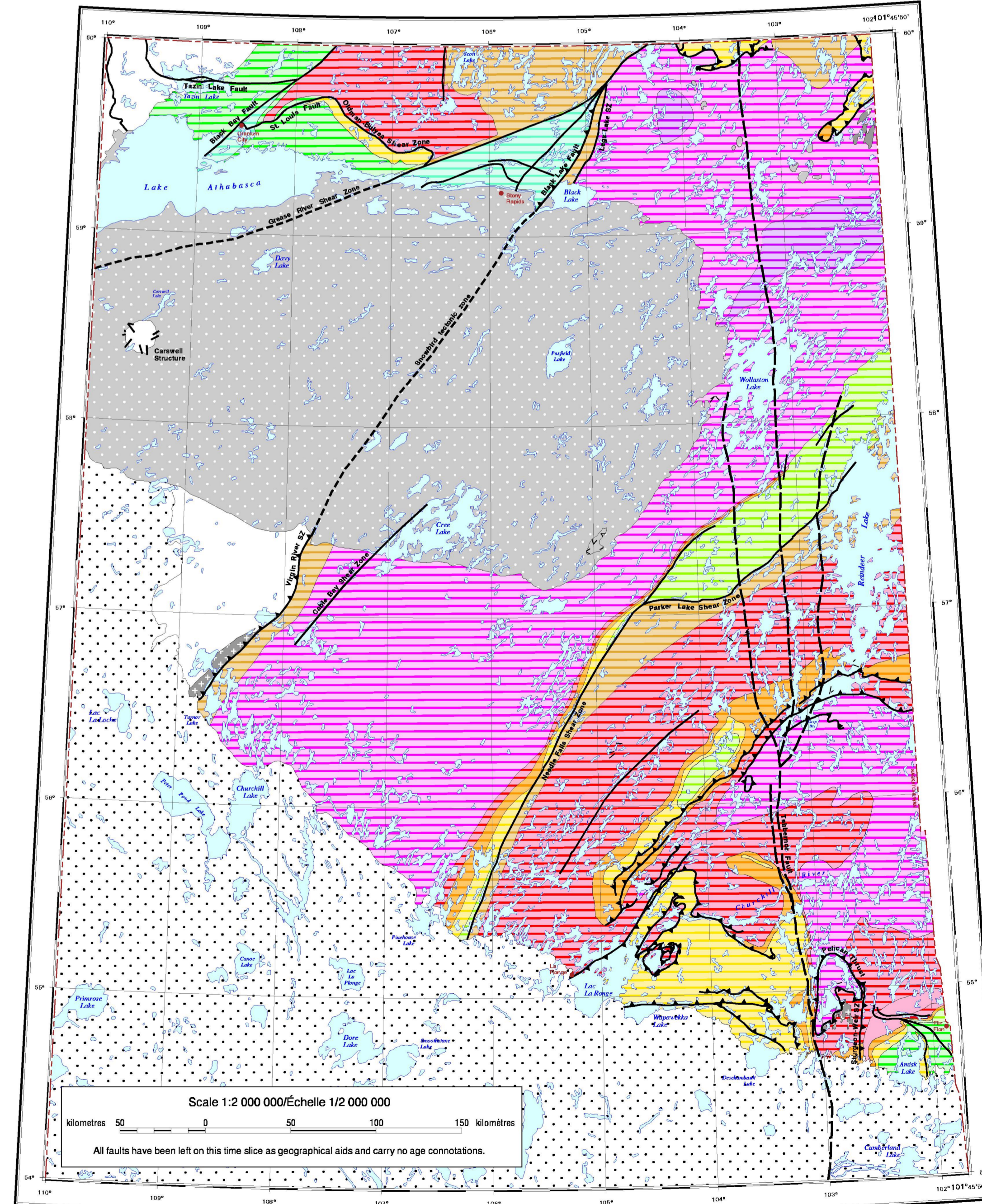


Figure 6. Map showing 1870-1760 Ma metamorphism in northern Saskatchewan.