

Figure 8. Columnar sections illustrating thickness, lithology and facies relationships of the Kootenay Group, Rocky Mountain Foothills and Front Ranges, southwestern Alberta.

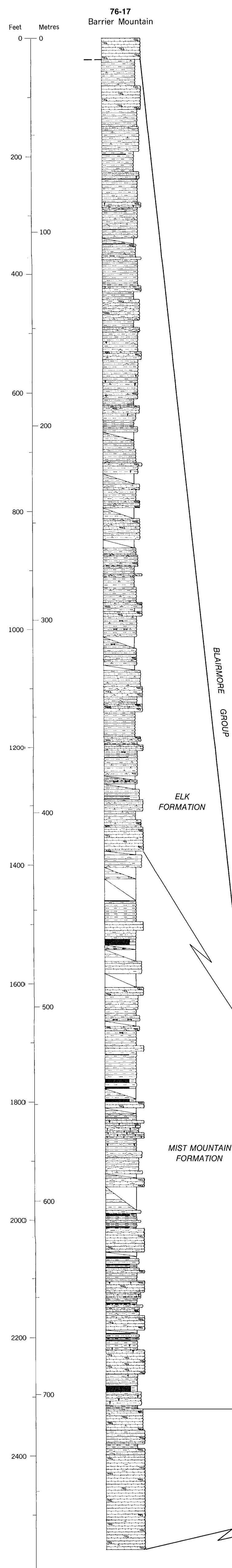
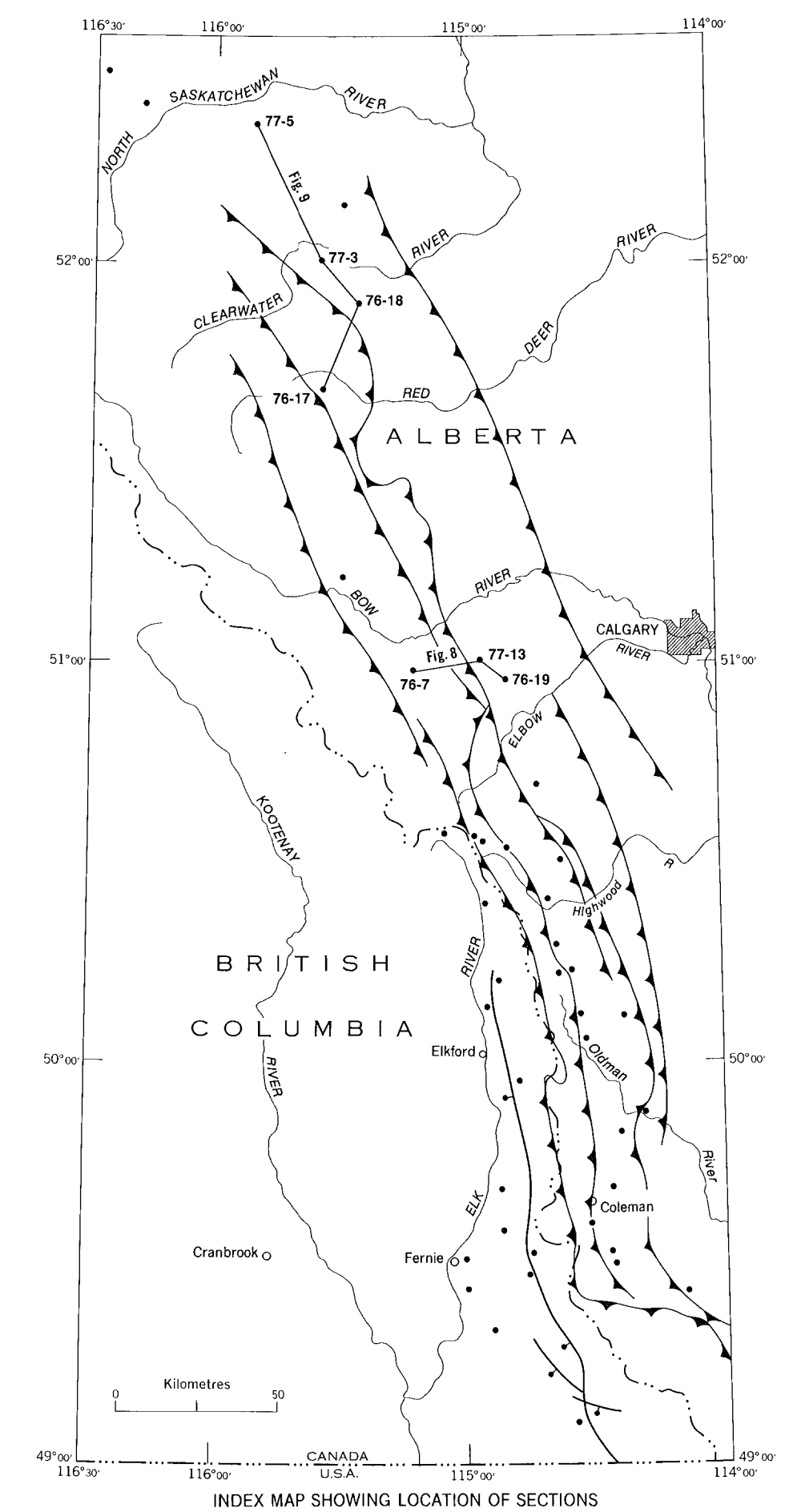


Figure 9. Columnar sections illustrating thickness, lithology and facies relationships of the Kootenay Group, Rocky Mountain Foothills and Front Ranges, west central Alberta.



Geology by D.W. Gibson, 1982
 To accompany GSC Bulletin 357, by D.W. Gibson
 Drafting by B.H. Orman, Institute of Sedimentary and Petroleum Geology,
 Geological Survey of Canada