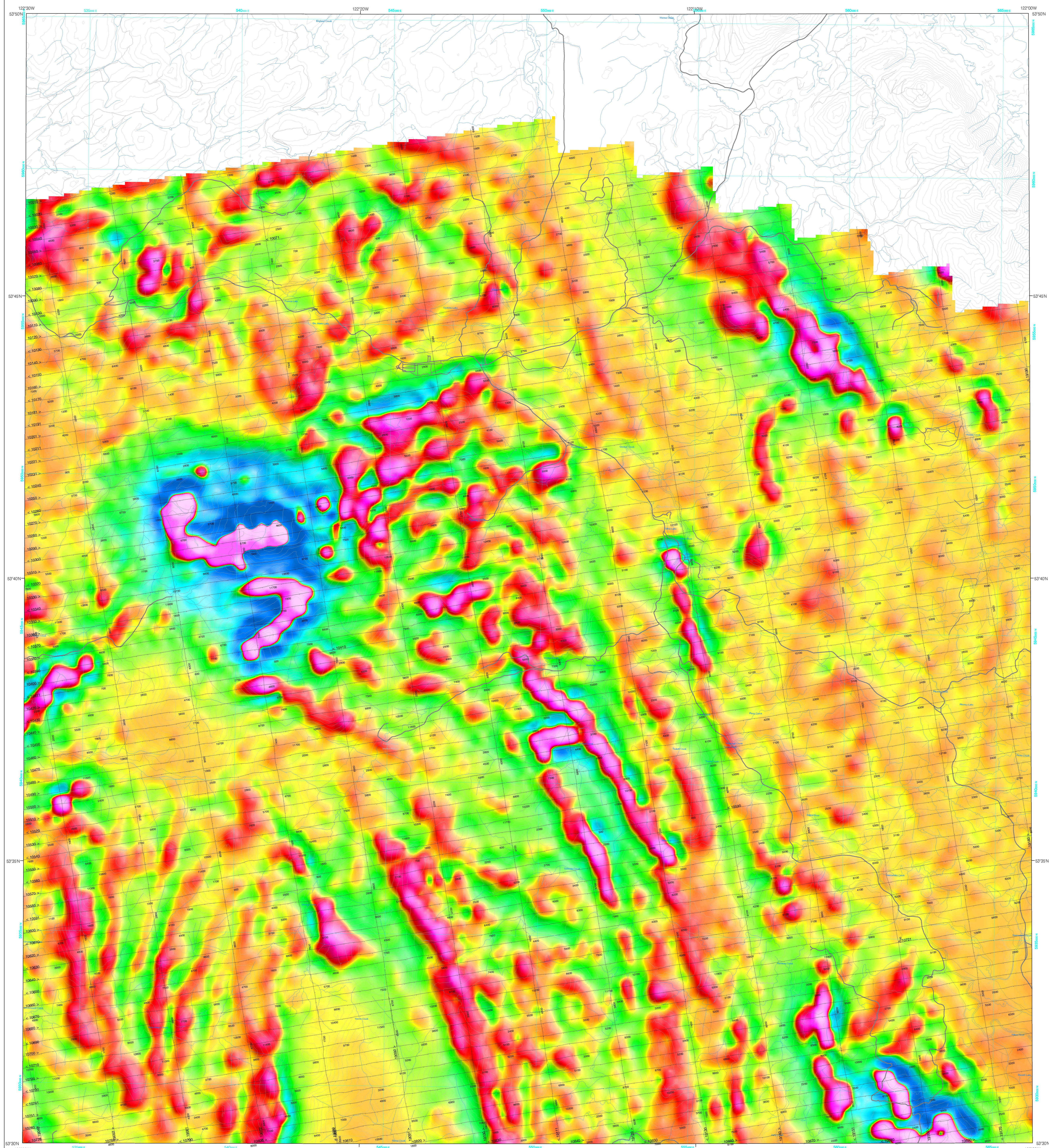


GEOPHYSICAL SERIES FIRST VERTICAL DERIVATIVE OF THE MAGNETIC FIELD

SÉRIE DES CARTES GÉOPHYSIQUES DÉRIVÉE PREMIÈRE VERTICALE DU CHAMP MAGNÉTIQUE



Quantitative gamma-ray spectrometry and aeromagnetic helicopter-borne geophysical survey of the Quesnel area, British Columbia... Gamma-ray Spectrometric Data... Potassium is measured directly from the 1460 keV gamma-ray photons emitted by K40... The first vertical derivative of the magnetic field is the rate of change of the magnetic field in the vertical direction...

GSC OPEN FILE 6001 / DOSSIER PUBLIC 6001 DE LA CGC GEOPHYSICAL SERIES / SÉRIE DES CARTES GÉOPHYSIQUES NTS 93 G/9 and part of 93 G/16 / SNRC 93 G/9 et partie de 93 G/16

AIRBORNE GEOPHYSICAL SURVEY QUESNEL BRITISH COLUMBIA LEVÉ GÉOPHYSIQUE AÉROPORTÉ QUESNEL COLOMBIE-BRITANNIQUE FIRST VERTICAL DERIVATIVE OF THE MAGNETIC FIELD DÉRIVÉE PREMIÈRE VERTICALE DU CHAMP MAGNÉTIQUE

Scale 1:50 000 - Échelle 1:50 000. Includes a small map of Canada showing the location of the survey area.

MAP SHEET SUMMARY / SOMMAIRE DES FEUILLETS. Includes a legend for planimetric symbols and a map showing the location of the survey area within the National Topographic System Reference and Geographical Map Index.

Authors: J. M. Carson, R. Dumont et J. L. Buckle. Date acquisition, compilation and map production by Fugro Airborne Surveys, Toronto, Ontario.