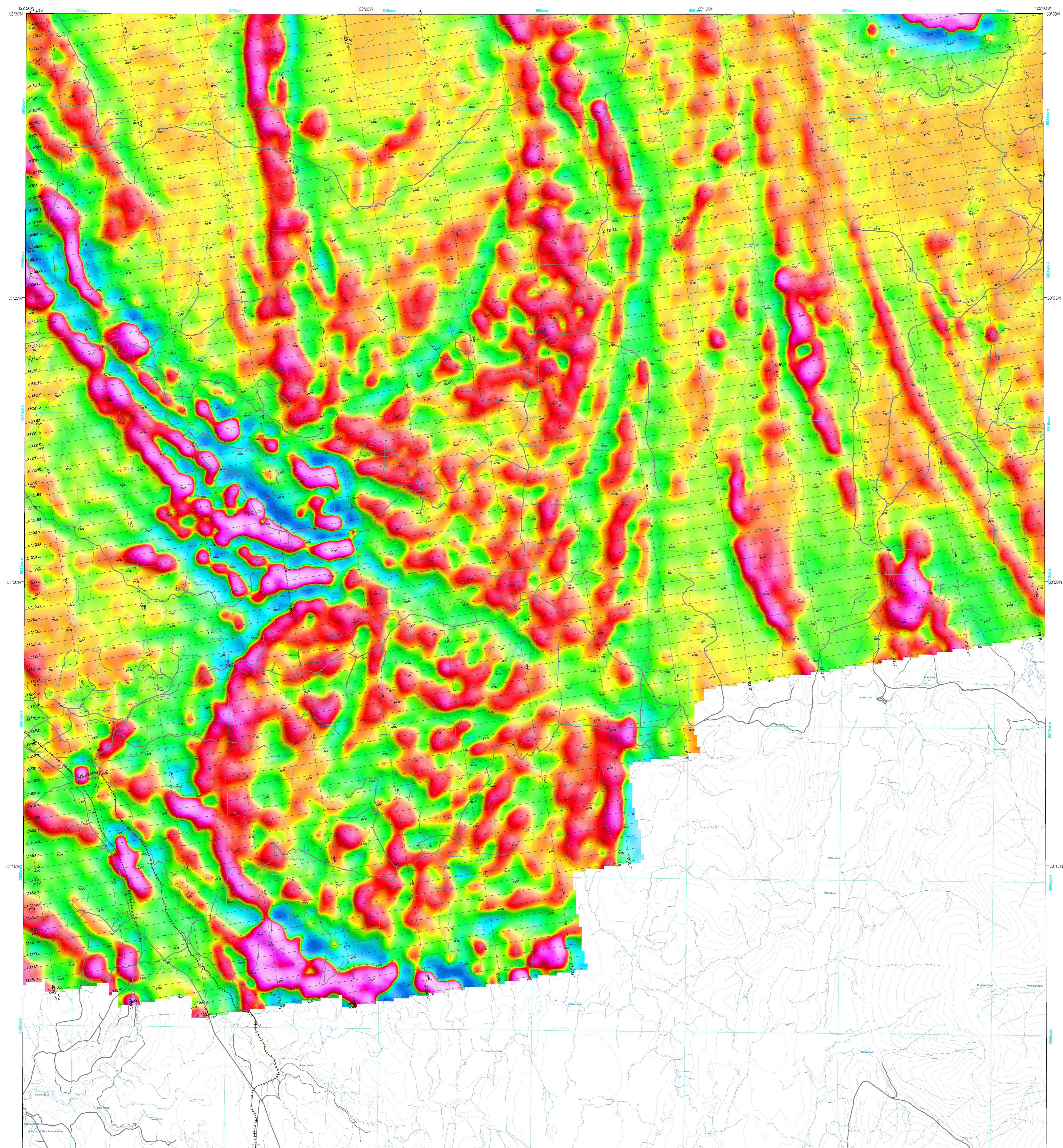


GEOPHYSICAL SERIES / FIRST VERTICAL DERIVATIVE OF THE MAGNETIC FIELD

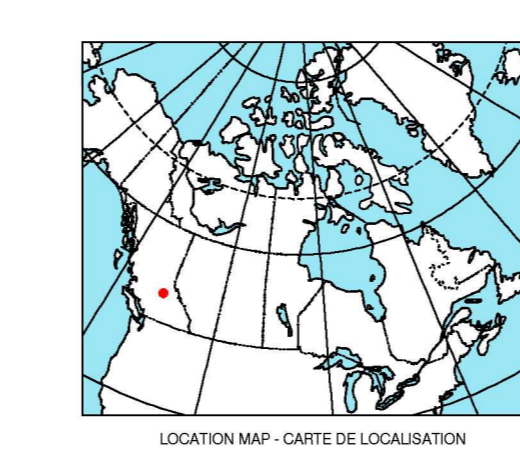


AIRBORNE GEOPHYSICAL SURVEY, QUESNEL, BRITISH COLUMBIA
A quantitative gamma-ray spectrometric and aeromagnetic helicopter-borne geophysical survey of the Quesnel area, British Columbia, was completed by Fugro Airborne Surveys, Inc. from September 19th to September 21st, 2007...

This airborne geophysical survey and the production of the map were funded by the Geoscience for Mountain Pine Beetle Program of the Earth Sciences Sector.
Ce relevé géophysique aéroporté et la production de cette carte ont été financés par le programme géoscience du Canada et le programme de lutte contre le dendrocyte des montagnes, Ottawa.

Authors: J. M. Carson, R. Dumont et J. L. Buckle.
Data acquisition, compilation and map production by Fugro Airborne Surveys, Toronto, Ontario.
Contact and project management by the Geological Survey of Canada, Ottawa, Ontario.

GSC OPEN FILE 6000 / DOSSIER PUBLIC 6000 DE LA CGC
GEOPHYSICAL SERIES / SÉRIE DES CARTES GÉOPHYSIQUES
NTS 93 G/8 and part of 93 G/1 / SNRC 93 G/8 et partie de 93 G/1
AIRBORNE GEOPHYSICAL SURVEY QUESNEL BRITISH COLUMBIA
LEVÉ GÉOPHYSIQUE AÉROPORTÉ QUESNEL COLOMBIE-BRITANNIQUE
FIRST VERTICAL DERIVATIVE OF THE MAGNETIC FIELD
DÉRIVÉE PREMIÈRE VERTICALE DU CHAMP MAGNÉTIQUE



Digital versions of the map and the corresponding digital line data, gridded geophysical data and anomaly listings by individual survey areas may be downloaded, at no charge, from Natural Resources Canada's Geoscience Data Repository...

MAP SHEET SUMMARY / SOMMAIRE DES FEUILLETS
Planimetric symbols / Symboles planimétriques
National Topographical System Reference and Geophysical Map Index / Système national de référence cartographique et index des cartes géophysiques
OPEN FILE / DOSSIER PUBLIC 6000
SHEET 2 OF 10 / FEUILLETT 2 DE 10

