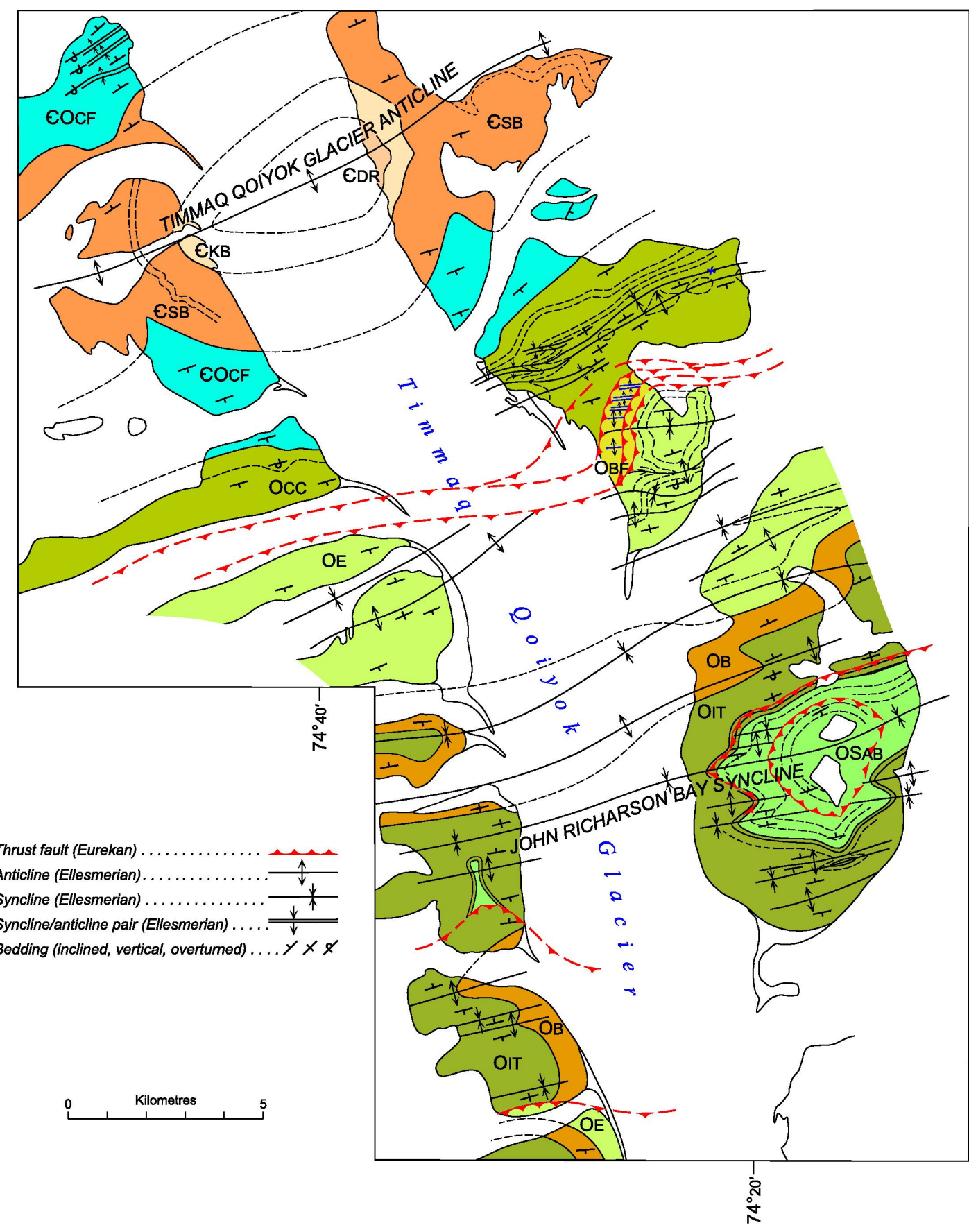


Cross-section Dobbin Bay



Geological map of the profile segment between Timmaq Qoiyok Glacier Anticline and John Richardson Bay Syncline (cross-section Dobbin Bay)

SHELF SEQUENCE

TERTIARY	
TCL	CAPE LAWRENCE FORMATION
LOWER DEVONIAN TO LOWER SILURIAN	
SD	EIDS FORMATION, DOURO FORMATION, CAPE STORM FORMATION, CAPE PHILLIPS FORMATION
ORDOVICIAN	
UPPER ORDOVICIAN	
OSAB	ALLEN BAY FORMATION
CORNWALLIS GROUP (OBL-OIT)	
OIT	IRENE BAY FORMATION, THUMB MOUNTAIN FORMATION
MIDDLE ORDOVICIAN	
OB	BAY FIORD FORMATION
LOWER ORDOVICIAN	
OE	ELEANOR RIVER FORMATION
OBF	BAUMANN FIORD FORMATION
OCC	CHRISTIAN ELV FORMATION, CAPE CLAY FORMATION
CAMBRIAN	
MIDDLE AND UPPER CAMBRIAN	
COCF	CASS FJORD FORMATION
LOWER CAMBRIAN	
CSB	SCORESBY BAY FORMATION
ELLESMERE GROUP (VKC-CKB)	
CKB	KANE BASIN FORMATION
CDR	DALLAS BUGT FORMATION, RAWLINGS BAY FORMATION
NEOPROTEROZOIC	
VEB	ELLA BAY FORMATION
VKC	KENNEDY CHANNEL FORMATION

Figure 14. Dobbin Bay cross-section and schematic subsurface interpretation through the Central Ellesmere Fold Belt and the Ellesmerian foreland between Timmaq Qoiyok Glacier in the north-northwest and Princess Marie Bay (Kane Basin) in the south-southeast (for location, see Fig. 1)

K. Piepjohn, W. von Gosen, F. Tessensohn, and K. Saalmann

FIGURE 14