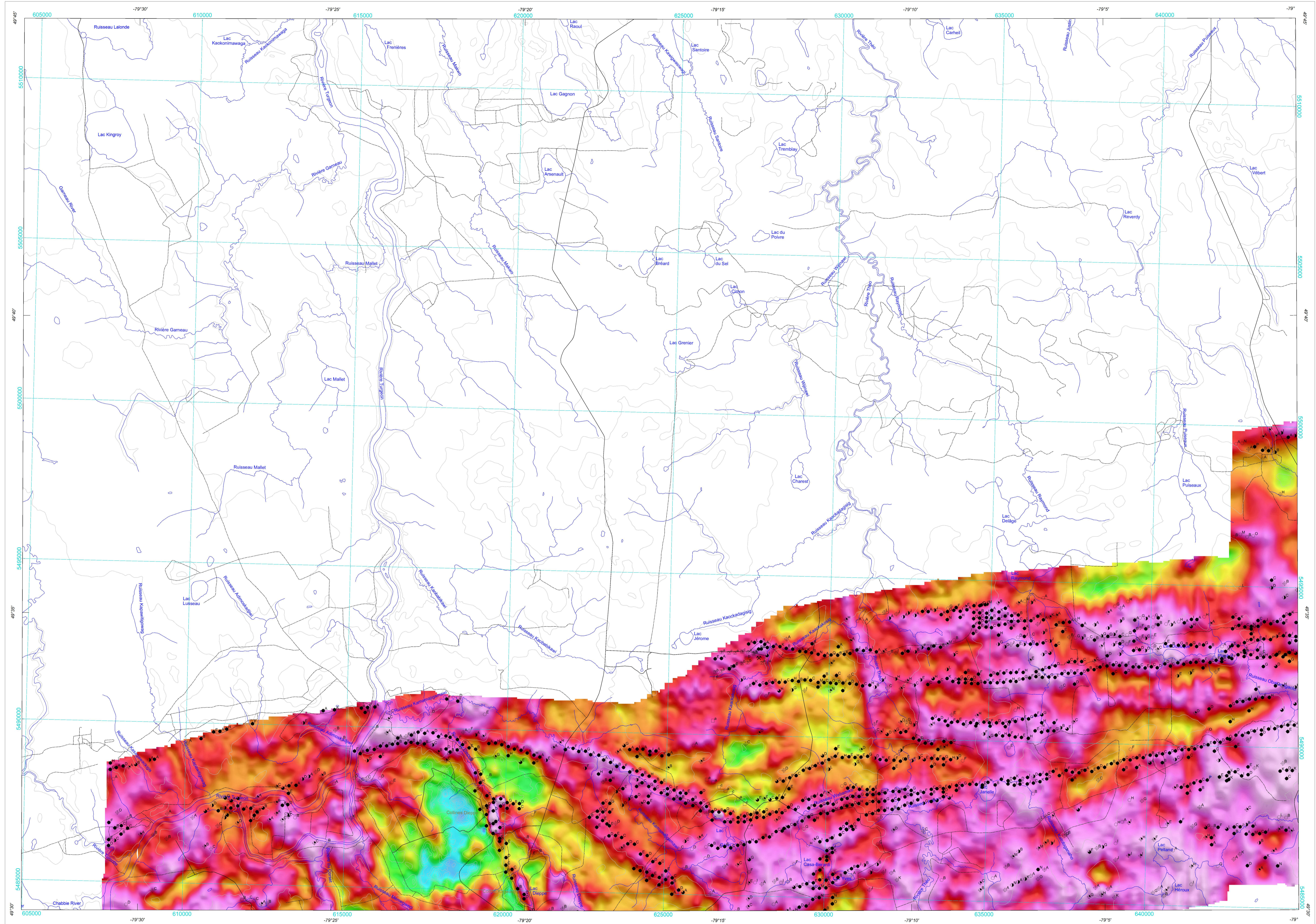
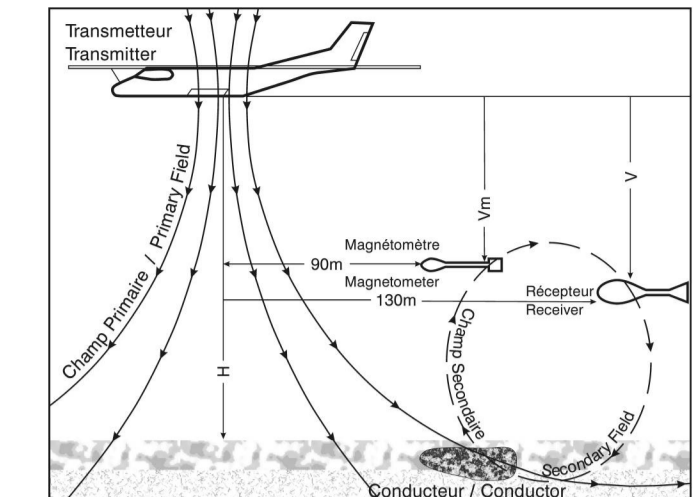


GEOPHYSICAL SERIES APPARENT CONDUCTANCE

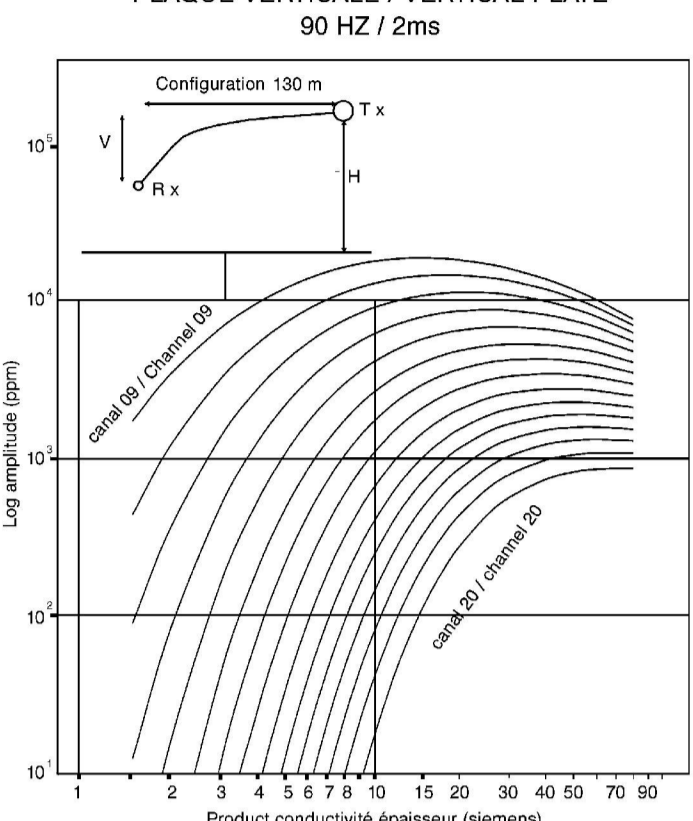
SÉRIE DES CARTES GÉOPHYSIQUES CONDUCTANCE APPARENTE



GÉOMÉTRIE DU SYSTÈME / SYSTEM GEOMETRY



NOMOGRAMME / NOMOGRAM



SYMBOLS DES ANOMALIES ÉLECTROMAGNÉTIQUES

- Legend for electromagnetic anomalies and planimetric symbols, including symbols for surface/cultural features, roads, and drainage.

SYMBOLS PLANIMÉTRIQUES

- Legend for planimetric symbols such as roads, trails, and power lines.

SYMBOLS PLANIMÉTRIQUES

- Legend for planimetric symbols such as roads, trails, and power lines.

LOCALISATION DE LA CARTE / MAP LOCATION



Introduction
Plusieurs gisements de métaux communs découverts en Abitibi depuis les années 1950 ont été trouvés au moyen de techniques géophysiques et géochimiques courantes...

Introduction
Many of the base metal deposits discovered in the Abitibi Mining Camp during the 1950s were found using geochemical and geophysical methods available at that time...

Data Completion
All survey data were processed and compiled by FAS. The Geological Survey of Canada (GSC) merged the grids of individual blocks into one seamless map of each frame for its map presentation...

Electromagnetic System
Electromagnetic data were acquired using the MEGATEM time domain EM system. The system transmits a signal from a horizontal coil, centered on the aircraft, and measures the response of buried conductors...

Tableau des paramètres des levés / Table of Survey Parameters. Table with columns for Zone Area, Nom du levé, Kilomètres carrés, Espacement des lignes de conduite, etc.

Tableau des données géographiques et index des cartes géophysiques. Table with columns for Zone Area, Nom du levé, Kilomètres carrés, etc.

DOSSIER PUBLIC 5963 DE LA CGC / GSC OPEN FILE 5963
DP 2008-24 DU MRNF
SÉRIE DES CARTES GÉOPHYSIQUES / GEOPHYSICAL SERIES
SNRC 32 E/11 et partie de 32 E/12 / NTS 32 E/11 and part of 32 E/12

Levés MEGATEM II de la ceinture de roches vertes de l'Abitibi, Québec
MAGATEM II SURVEYS OF THE ABITIBI GREENSTONE BELT, QUEBEC

CONDUCTANCE APPARENTE
APPARENT CONDUCTANCE
Echelle 1/50 000 - Scale 1:50 000

Footer area containing logos for Xstrata Zinc, Virginia, and the Geological Survey of Canada, along with contact information and a disclaimer.