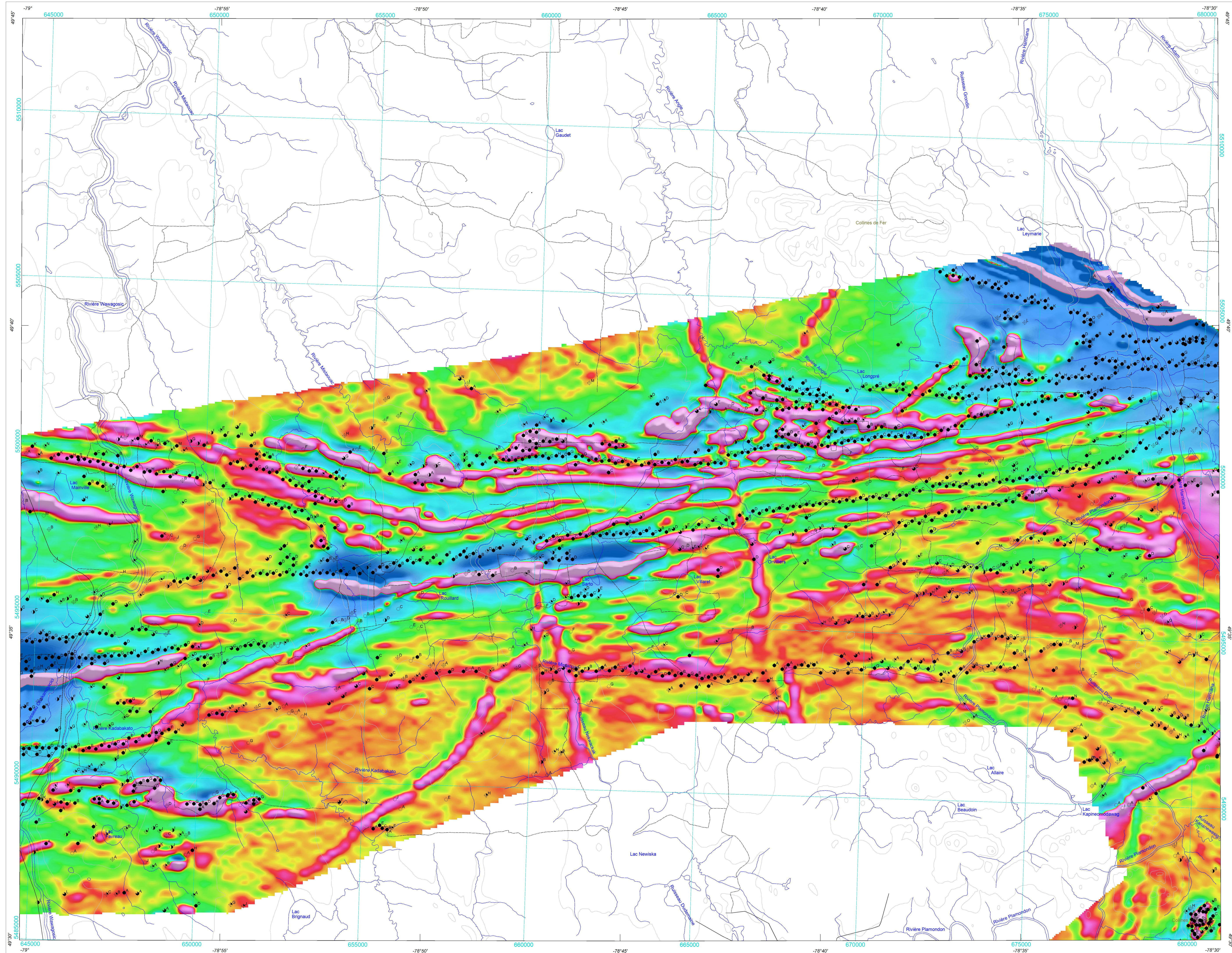
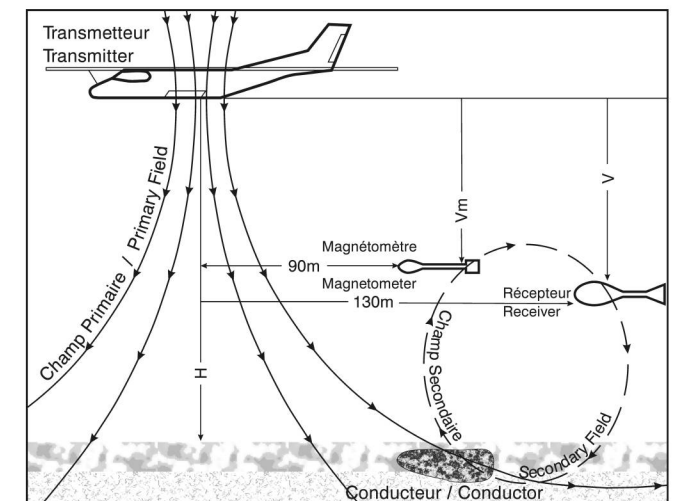


GEOPHYSICAL SERIES / PREMIÈRE DÉRIVÉE DU CHAMP MAGNÉTIQUE

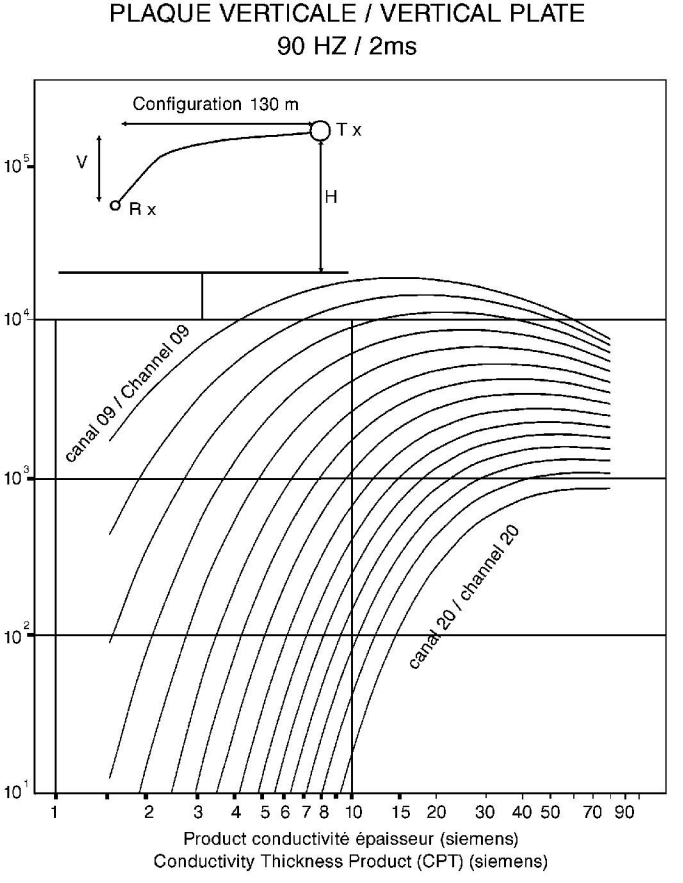
SÉRIE DES CARTES GÉOPHYSIQUES / SÉRIE DES CARTES GÉOPHYSIQUES



GÉOMÉTRIE DU SYSTÈME / SYSTEM GEOMETRY



NOMOGRAMME / NOMOGRAM

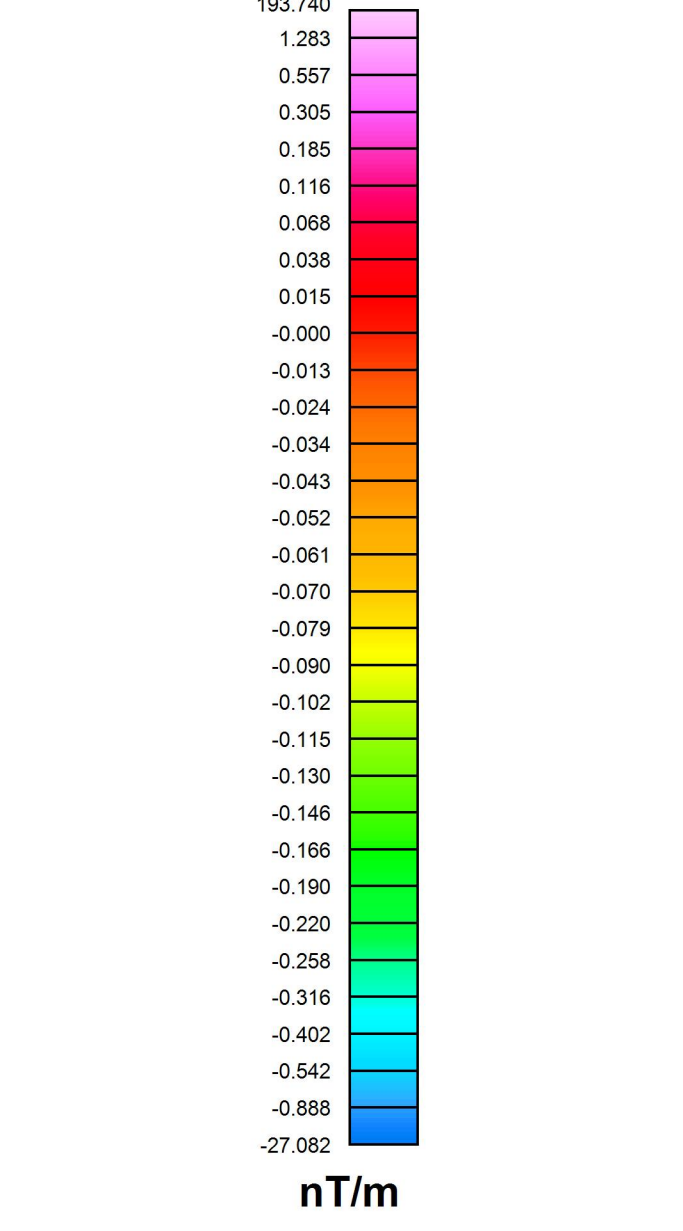


SYMBOLS DES ANOMALIES ELECTROMAGNETIQUES / ELECTROMAGNETIC ANOMALY SYMBOLS

- List of symbols for electromagnetic anomalies, including Superficial / Surficial, Anthropogenic / Cultural, and various depth ranges.

SYMBOLS PLANIMÉTRIQUES / PLANIMETRIC SYMBOLS

- List of planimetric symbols for roads, trails, railways, power lines, and drainage.



LOCALISATION DE LA CARTE / MAP LOCATION



La mission des Ressources naturelles et de la Faune du Québec (MRNF) et Ressources naturelles Canada (NRCan) remercient Xstrata Zinc Canada et Mines Virginia Inc. d'avoir prêté ces données au Plan cadre du MRNF et au projet Abitibi du programme de l'Initiative géoscientifique ciblée (IGI-3) du Secteur des sciences de la Terre de NRCan permettant ainsi la publication de cette carte.

The mission of the Ressources naturelles et de la Faune du Québec (MRNF) and Natural Resources Canada (NRCan) wish to sincerely thank Xstrata Zinc Canada and Mines Virginia Inc. for providing these data to the Copper Plan of the MRNF and to the Abitibi Project of the Targeted Geoscience Initiative (TGI-3) Program of the Earth Sciences Sector of NRCan, which have made the publication of this map possible.

Auteurs : Commission Géologique du Canada et Ministère des Ressources naturelles et de la Faune du Québec / Authors: Geological Survey of Canada and Ministère des Ressources naturelles et de la Faune du Québec

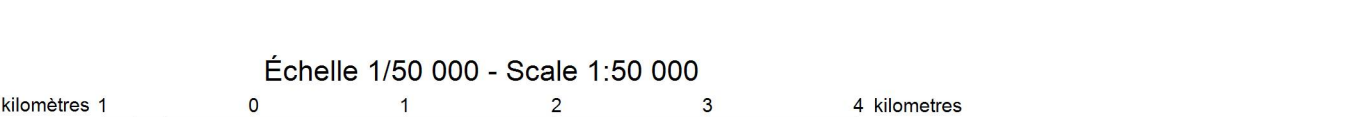


DOSSIER PUBLIC 5962 DE LA CGC / GSC OPEN FILE 5962

SÉRIE DES CARTES GÉOPHYSIQUES / GEOPHYSICAL SERIES

LEVÉS MEGATEM II DE LA CEINTURE DE ROCHES VERTES DE L'ABITIBI, QUÉBEC

DÉRIVÉE PREMIÈRE VERTICALE DU CHAMP MAGNÉTIQUE



Projection transverse universelle de Mercator / Universal Transverse Mercator Projection. Géométrique / Geometric. Échelle 1/50 000 - Scale 1:50 000.

Les versions numériques de ces cartes ainsi que les données géophysiques en formats « profil » et « maille » et les bases d'anomalies peuvent être téléchargées gratuitement depuis le site de la Collection de données géophysiques et géochimiques de l'États de données géophysiques de Ressources naturelles Canada.

This map and the digital geophysical data may also be obtained from the ministère des Ressources naturelles et de la Faune du Québec Internet web site "Online Products and Services" at http://www.mrfp.gouv.qc.ca/english/products-services/mines.ca

OPEN FILE DOSSIER PUBLIC 5962. Includes contact information for the Geological Survey of Canada and the Ministry of Natural Resources and Fauna of Quebec.

Introduction

Plusieurs gisements de métaux communs découverts en Abitibi depuis les années 1950 ont été trouvés au moyen de techniques géophysiques et géochimiques. Ces gisements ont permis de découvrir que des gisements minéraux localisés plus de 200 m de profondeur.

Ces levés ont été exécutés par FAS entre juillet 2001 et août 2003. Les données obtenues ont été recueillies par un système électromagnétique à domaine temporel du type MEGATEM II.

Le système MEGATEM II est semblable aux méthodes classiques, mais utilise une bobine de résonance pour générer le champ magnétique de la station de base.

Les données électromagnétiques ont été recueillies au moyen du système électromagnétique à domaine temporel du type MEGATEM II.

L'interprétation quantitative des données du système MEGATEM II figurant sur la carte des anomalies électromagnétiques a été effectuée en comparant les réponses électromagnétiques à des nomogrammes basés sur des modèles mathématiques.

Le système MEGATEM II est semblable aux méthodes classiques, mais utilise une bobine de résonance pour générer le champ magnétique de la station de base.

En raison de contraintes d'échelle, seuls l'emplacement et les caractéristiques de certaines anomalies électromagnétiques sont représentées par des symboles fondés sur les données associées aux canaux.

Many of the base metal deposits discovered in the Abitibi Mining Camp during the 1950s were found using geophysical and geochemical methods available at that time as well as geological prospecting.

These surveys were completed for FAS between July 2001 and August 2003. The data were acquired using a MEGATEM II time domain EM system and a split-beam omnibus magnetometer.

The MEGATEM II system responds to conductive overburden, near-surface horizontal conductive layers, man-made sources and bedrock conductors.

Quantitative interpretation of the MEGATEM II data presented in the EM anomaly map was accomplished by comparing the EM responses with nomograms obtained from mathematical models.

Due to map scale constraints in this presentation, only the anomaly picks are located by symbols based on channel responses.

The MEGATEM II system responds to conductive overburden, near-surface horizontal conductive layers, man-made sources and bedrock conductors.

Quantitative interpretation of the MEGATEM II data presented in the EM anomaly map was accomplished by comparing the EM responses with nomograms obtained from mathematical models.

Due to map scale constraints in this presentation, only the anomaly picks are located by symbols based on channel responses.

The MEGATEM II system responds to conductive overburden, near-surface horizontal conductive layers, man-made sources and bedrock conductors.

Quantitative interpretation of the MEGATEM II data presented in the EM anomaly map was accomplished by comparing the EM responses with nomograms obtained from mathematical models.

Due to map scale constraints in this presentation, only the anomaly picks are located by symbols based on channel responses.

The MEGATEM II system responds to conductive overburden, near-surface horizontal conductive layers, man-made sources and bedrock conductors.

Quantitative interpretation of the MEGATEM II data presented in the EM anomaly map was accomplished by comparing the EM responses with nomograms obtained from mathematical models.

Due to map scale constraints in this presentation, only the anomaly picks are located by symbols based on channel responses.

The MEGATEM II system responds to conductive overburden, near-surface horizontal conductive layers, man-made sources and bedrock conductors.

Quantitative interpretation of the MEGATEM II data presented in the EM anomaly map was accomplished by comparing the EM responses with nomograms obtained from mathematical models.

Due to map scale constraints in this presentation, only the anomaly picks are located by symbols based on channel responses.

The MEGATEM II system responds to conductive overburden, near-surface horizontal conductive layers, man-made sources and bedrock conductors.

Quantitative interpretation of the MEGATEM II data presented in the EM anomaly map was accomplished by comparing the EM responses with nomograms obtained from mathematical models.

Due to map scale constraints in this presentation, only the anomaly picks are located by symbols based on channel responses.

The MEGATEM II system responds to conductive overburden, near-surface horizontal conductive layers, man-made sources and bedrock conductors.