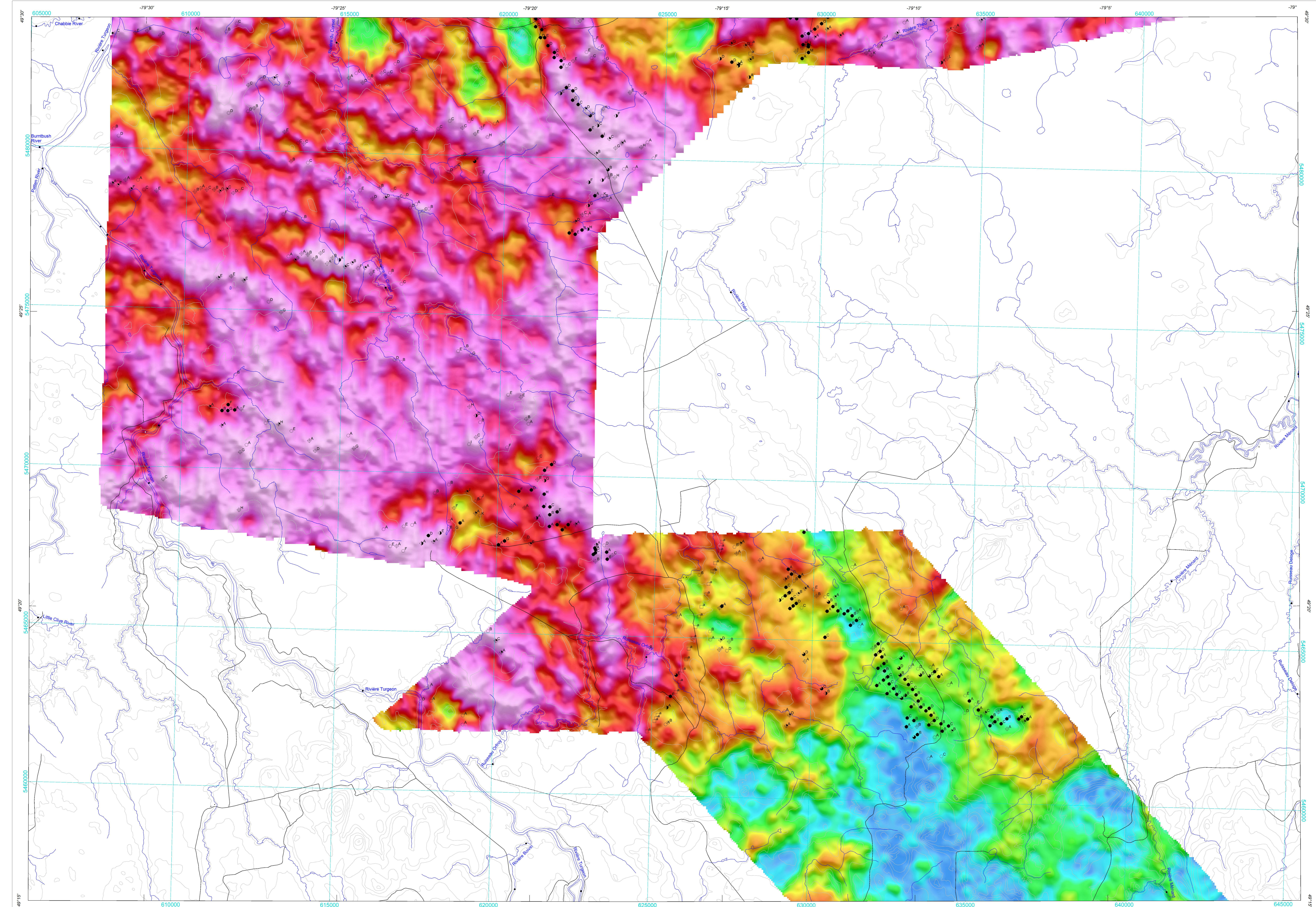
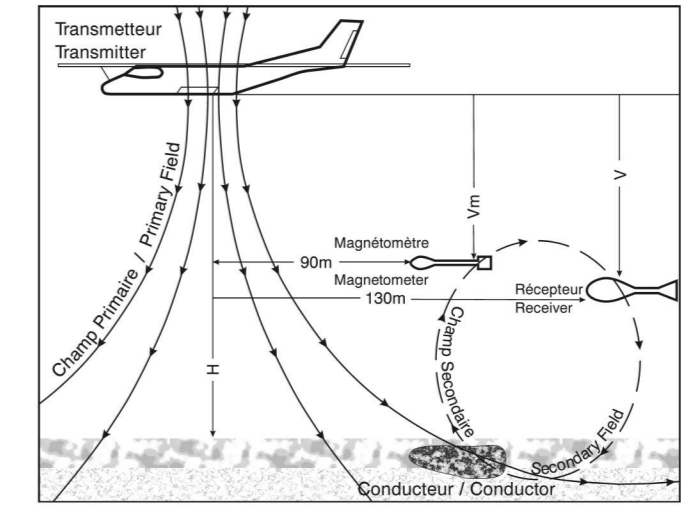


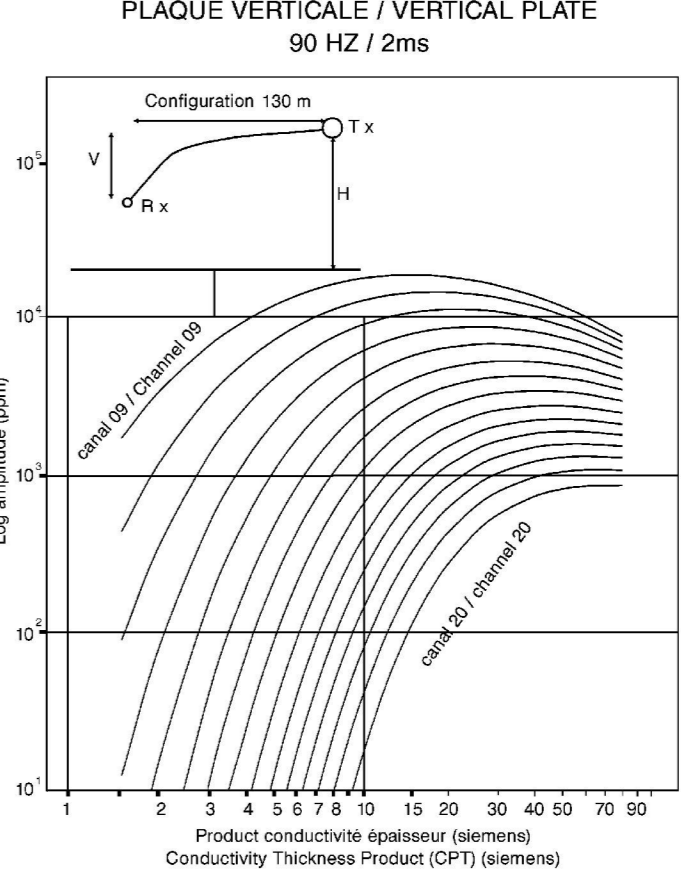
GEOPHYSICAL SERIES / APPARENT CONDUCTANCE



GÉOMÉTRIE DU SYSTÈME / SYSTEM GEOMETRY



NOMOGRAMME / NOMOGRAM



SYMBLES DES ANOMALIES ÉLECTROMAGNÉTIQUES / ELECTROMAGNETIC ANOMALY SYMBOLS

- List of symbols for anomalies, canaux, and channels, including symbols for surface features, cultural features, and various anomaly types.

SYMBLES PLANIMÉTRIQUES / PLANIMETRIC SYMBOLS

- List of planimetric symbols for roads, trails, railways, power lines, and drainage.

Tableau des paramètres des levés / Table of Survey Parameters

Table with columns: Levé / Survey name, Nombre de lignes / Number of lines, Longueur des lignes / Line length, etc. Lists parameters for various survey lines (A-P).

LOCALISATION DE LA CARTE / MAP LOCATION



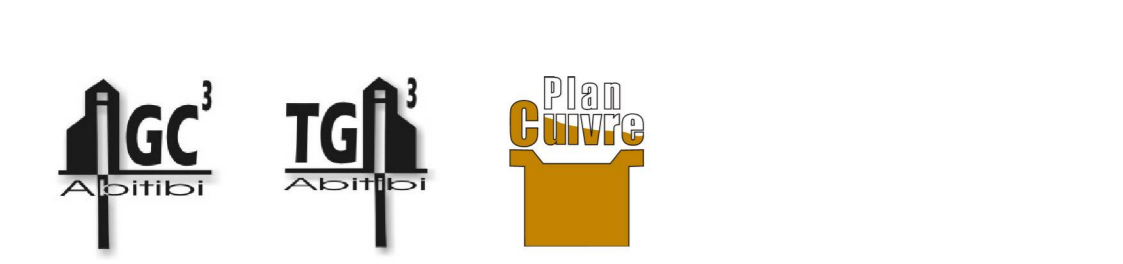
SOMMAIRE DES FEUILLETS / MAP SHEET SUMMARY

Summary table of map sheets, including sheet number, coordinates, and titles.

Le ministère des Ressources naturelles et de la Faune du Québec (MRNF) et Ressources naturelles Canada (NRCan) remercient... (Acknowledgements text)

Auteurs : Commission Géologique du Canada et Ministère des Ressources naturelles et de la Faune du Québec (Authors)

Autres : Geological Survey of Canada and Ministère des Ressources naturelles et de la Faune du Québec (Other contributors)



DOSSIER PUBLIC 5959 DE LA CGC / GSC OPEN FILE 5959 DP 2008-20 DU MRNF

SÉRIE DES CARTES GÉOPHYSIQUES / GEOPHYSICAL SERIES SNRC 32 E/6 et partie de 32 E/5 / NTS 32 E/6 and part of 32 E/5

LEVÉS MEGATEM II DE LA CEINTURE DE ROCHES VERTES DE L'ABITIBI, QUÉBEC / MEGATEM II SURVEYS OF THE ABITIBI GREENSTONE BELT, QUEBEC

CONDUCTANCE APPARENTE / APPARENT CONDUCTANCE

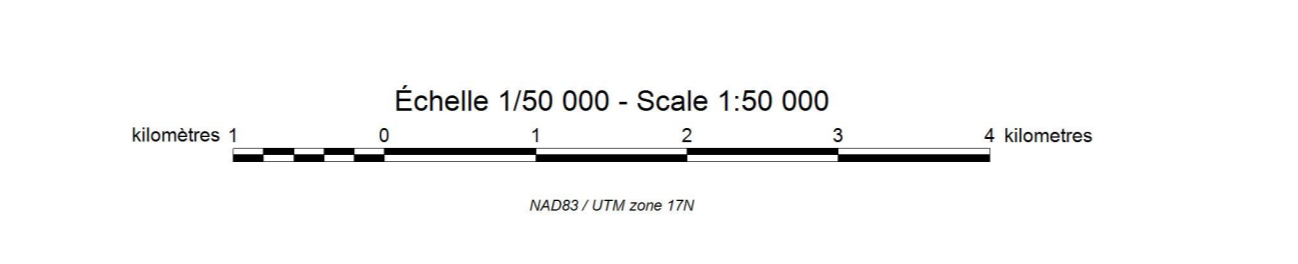


DOSSIER PUBLIC 5959 DE LA CGC / GSC OPEN FILE 5959 DP 2008-20 DU MRNF

SÉRIE DES CARTES GÉOPHYSIQUES / GEOPHYSICAL SERIES SNRC 32 E/6 et partie de 32 E/5 / NTS 32 E/6 and part of 32 E/5

LEVÉS MEGATEM II DE LA CEINTURE DE ROCHES VERTES DE L'ABITIBI, QUÉBEC / MEGATEM II SURVEYS OF THE ABITIBI GREENSTONE BELT, QUEBEC

CONDUCTANCE APPARENTE / APPARENT CONDUCTANCE



DOSSIER PUBLIC 5959 DE LA CGC / GSC OPEN FILE 5959 DP 2008-20 DU MRNF

SÉRIE DES CARTES GÉOPHYSIQUES / GEOPHYSICAL SERIES SNRC 32 E/6 et partie de 32 E/5 / NTS 32 E/6 and part of 32 E/5

LEVÉS MEGATEM II DE LA CEINTURE DE ROCHES VERTES DE L'ABITIBI, QUÉBEC / MEGATEM II SURVEYS OF THE ABITIBI GREENSTONE BELT, QUEBEC

CONDUCTANCE APPARENTE / APPARENT CONDUCTANCE

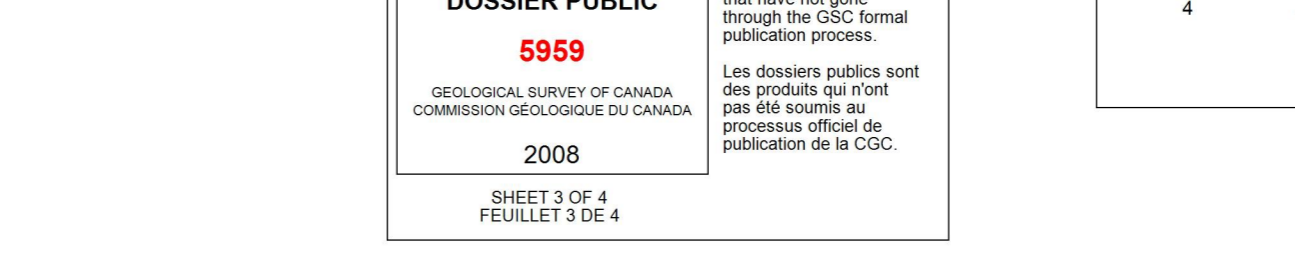


DOSSIER PUBLIC 5959 DE LA CGC / GSC OPEN FILE 5959 DP 2008-20 DU MRNF

SÉRIE DES CARTES GÉOPHYSIQUES / GEOPHYSICAL SERIES SNRC 32 E/6 et partie de 32 E/5 / NTS 32 E/6 and part of 32 E/5

LEVÉS MEGATEM II DE LA CEINTURE DE ROCHES VERTES DE L'ABITIBI, QUÉBEC / MEGATEM II SURVEYS OF THE ABITIBI GREENSTONE BELT, QUEBEC

CONDUCTANCE APPARENTE / APPARENT CONDUCTANCE



DOSSIER PUBLIC 5959 DE LA CGC / GSC OPEN FILE 5959 DP 2008-20 DU MRNF

SÉRIE DES CARTES GÉOPHYSIQUES / GEOPHYSICAL SERIES SNRC 32 E/6 et partie de 32 E/5 / NTS 32 E/6 and part of 32 E/5

LEVÉS MEGATEM II DE LA CEINTURE DE ROCHES VERTES DE L'ABITIBI, QUÉBEC / MEGATEM II SURVEYS OF THE ABITIBI GREENSTONE BELT, QUEBEC

CONDUCTANCE APPARENTE / APPARENT CONDUCTANCE



Introduction

Plusieurs gisements de métaux communs découverts en Abitibi depuis les années 1950 ont été trouvés au moyen de techniques géophysiques et géochimiques croisées... (Introduction text)

Ces levés ont été exécutés par FAS entre juillet 2001 et août 2003. Les données obtenues ont été recueillies par un système électromagnétique à domaine temporel du type MEGATEM II... (Survey details text)

Compilation des données: Toutes les données des levés ont été traitées et compilées par FAS. La Commission géologique du Canada (CGC) a fusionné les quadrangles de chacun des levés pour produire une seule image sans joints illustrant chaque thème de la présente représentation cartographique... (Data compilation text)

Système électromagnétique: Les données électromagnétiques ont été recueillies au moyen du système électromagnétique à domaine temporel du type MEGATEM II... (System description text)

Représentation des anomalies électromagnétiques: En raison de contraintes d'échelle, seuls l'emplacement et les caractéristiques de certaines anomalies électromagnétiques sont représentés par des symboles fondés sur les réponses associées aux canaux... (Anomaly representation text)

Introduction: Many of the base metal deposits discovered in the Abitibi Mining Camp during the 1950s were found using geochemical and analytical methods available at that time... (Introduction text)

Survey characteristics: These surveys were carried out by FAS between July 2001 and August 2003. The data were acquired using a MEGATEM II time domain EM system... (Survey characteristics text)

Data compilation: All survey data were processed and compiled by FAS. The Geological Survey of Canada (GSC) merged the grids of individual blocks into one seamless image of each theme for this map presentation... (Data compilation text)

Electromagnetic System: Electromagnetic data were acquired using the MEGATEM II time domain EM system. The system transmits a signal from a horizontal loop, centred on the aircraft... (System description text)

Quantitative interpretation: The quantitative interpretation of the MEGATEM II data presented in the EM anomaly map was accomplished by comparing the EM responses with nonanomalous models... (Interpretation text)

EM Anomaly Presentation: Due to map scale constraints in this presentation, only the anomaly peaks are located by symbols based on channel responses. For more detailed quantitative information on the anomalies presented on these maps, the user is referred to the anomaly listing report... (Anomaly presentation text)

Map location: LOCALISATION DE LA CARTE / MAP LOCATION

Map sheet summary: SOMMAIRE DES FEUILLETS / MAP SHEET SUMMARY

Scale: Echelle 1/50 000 - Scale 1:50 000

Project funding: Projet financé par le Ministère des Ressources naturelles et de la Faune du Québec

Project funding: Project funded by the Ministry of Natural Resources and Forestry of Quebec

Project funding: Project funded by the Ministry of Natural Resources and Forestry of Quebec

Project funding: Project funded by the Ministry of Natural Resources and Forestry of Quebec

Project funding: Project funded by the Ministry of Natural Resources and Forestry of Quebec

Project funding: Project funded by the Ministry of Natural Resources and Forestry of Quebec

Project funding: Project funded by the Ministry of Natural Resources and Forestry of Quebec

Project funding: Project funded by the Ministry of Natural Resources and Forestry of Quebec

Project funding: Project funded by the Ministry of Natural Resources and Forestry of Quebec

Project funding: Project funded by the Ministry of Natural Resources and Forestry of Quebec

Project funding: Project funded by the Ministry of Natural Resources and Forestry of Quebec

Project funding: Project funded by the Ministry of Natural Resources and Forestry of Quebec

Project funding: Project funded by the Ministry of Natural Resources and Forestry of Quebec

Project funding: Project funded by the Ministry of Natural Resources and Forestry of Quebec