

DESCRIPTIVE NOTES

This map is a compilation of the geology of the Toodogone River area. It is a product of the project 'Integrated Petroleum Potential and Stratigraphic Studies of the Bowser and Sulist Basins' and is intended to display the geology of the Bowser and Sulist basins, and the units and structures of the stratigraphic basement of the basin.

REFERENCES

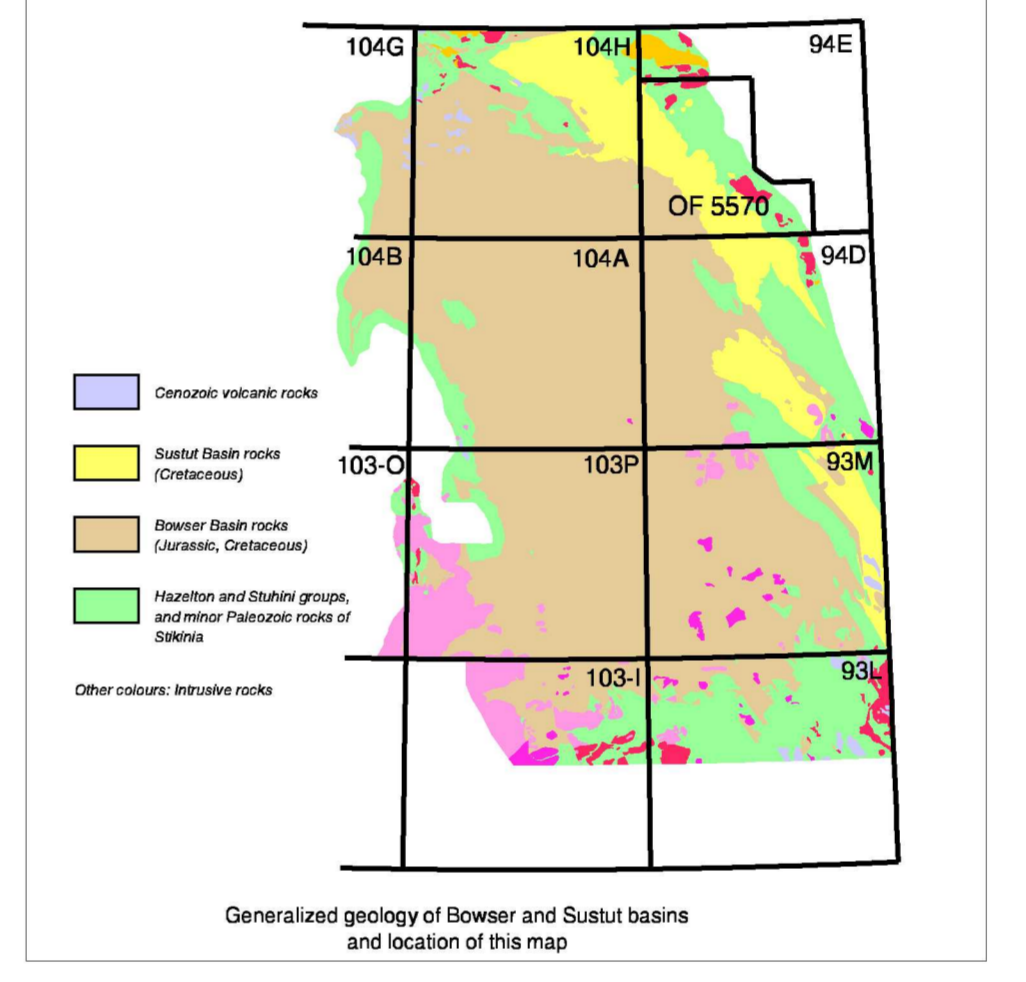
Diakow, L.J. 2001: Geology of the Southern Toodogone River and Northern McConnell Creek Map Areas, north-central British Columbia (parts of NT3 94E2, 94D15 and 94D16). B.C. Ministry of Energy and Mines, Geoscience Map 2001-1, 1:50,000 scale.

STRATIFIED ROCKS

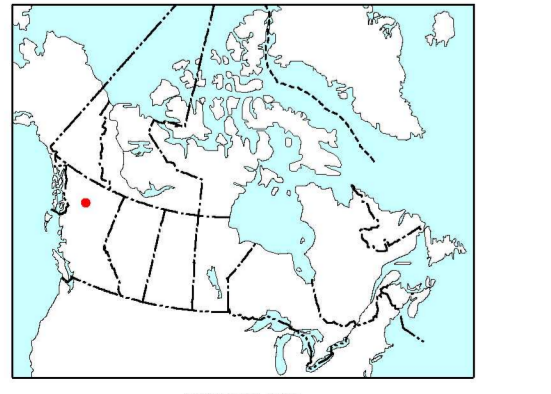
- QUATERNARY: PLEISTOCENE AND RECENT (Q)
CRETACEOUS: UPPER LOWER AND UPPER CRETACEOUS (KBP, KTC)
JURASSIC AND CRETACEOUS: UPPER JURASSIC AND LOWER CRETACEOUS (JKbu, JKbs, JKbc)
MESOZOIC: JURASSIC (JbL, JbT)
LOWER AND LOWER MIDDLE JURASSIC (JLTD, JHu)
TRIASSIC: UPPER TRIASSIC (uTV)
PERMIAN: LOWER PERMIAN (IPA)
LOWER CARBONIFEROUS AND OLDER (Pvs)

INTRUSIVE ROCKS

- JURASSIC (Ji)
TRIASSIC LATE TRIASSIC (Lti)
Pyroxene diorite and univerted alaskan-type ultramafic intrusions.



- Geological contact (defined, approximate, assumed or extrapolated under Quaternary)
Trace of individual beds from ground observation and airphoto interpretation
Fault, sense of displacement unknown (defined, approximate, extrapolated under Quaternary)
Fault, normal (ornament on down thrown side; defined, assumed)
Fault, thrust (sense on hanging wall defined, approximate, assumed)
Fault, thrust (extrapolated under Quaternary)
Fault, reverse (defined)
Fault, strike-slip (dextral defined, assumed, extrapolated under Quaternary)
Anticline (trace of axial surface; defined upright or inclined, defined overturned)
Syncline (trace of axial surface; defined upright or inclined, defined overturned)
Anticline, syncline (trace of axial surface; extrapolated under Quaternary)
Open, inclined syncline, trace of axial surface (defined, extrapolated under Quaternary; long arrow points in direction of dip of axial surface)
Conglomerate
Bedding (upright, top unknown, vertical, horizontal, overturned)
Cleavage (inclined)
Mine
Limit of Mapping
Road
Provincial park and protected area boundary
Glacier

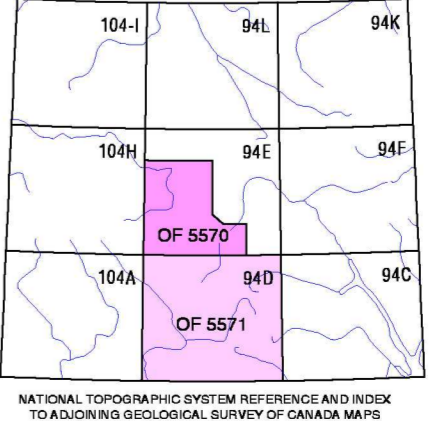


Geology by C.A. Evenchick (1991, 2006), D.H. Riley (2005), P.S. Mustard (2006), and M.E. McMechan (2006)
Digital geological cartography by C.L. Wagner, Data Dissemination Division (DD2)

GEOLOGY TOODOGONE RIVER BRITISH COLUMBIA

Scale 1:125 000/Echelle 1/125 000
Projection: Universal Transverse Mercator Projection, North American Datum 1927

Digital base map from data compiled by Geomatics Canada, converted to MAD27 by DDD
Mean magnetic declination 2007, 22°15', decreasing 19.8' annually
Elevations in metres above mean sea level
Contour interval 40 metres



OPEN FILE DOSSIER PUBLIC 5570
2007
Open files are products that have not gone through the OGC formal publication process. Les dossiers publics sont des produits qui n'ont pas encore été publiés formellement.