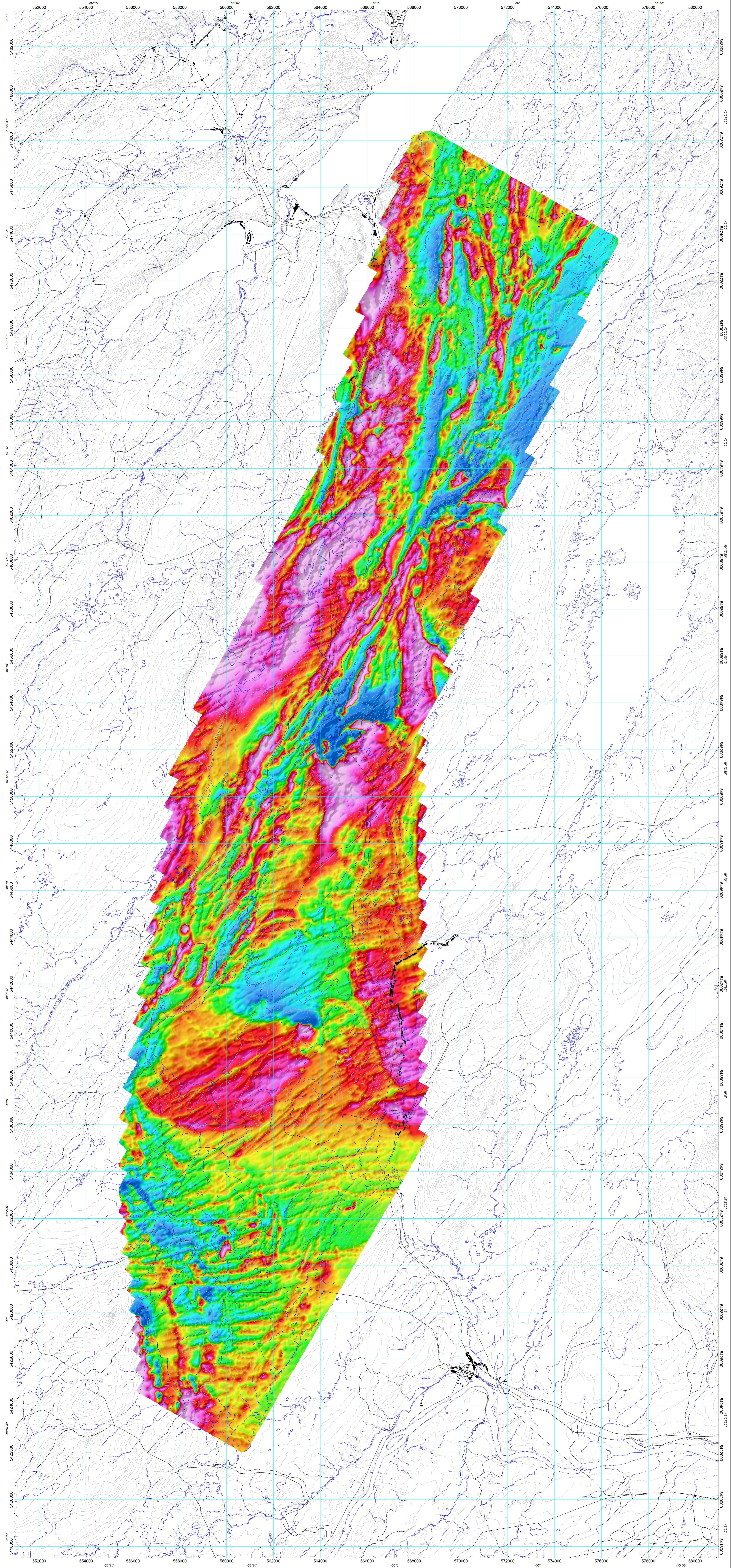




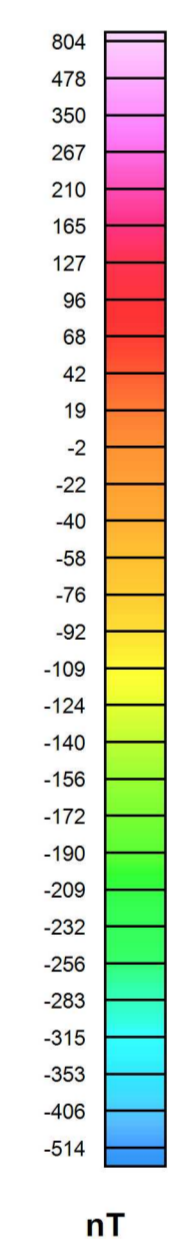
GEOPHYSICAL SERIES RESIDUAL TOTAL MAGNETIC FIELD

SÉRIE DES CARTES GÉOPHYSIQUES COMPOSANTE RÉSIDUELLE DU CHAMP MAGNÉTIQUE TOTAL

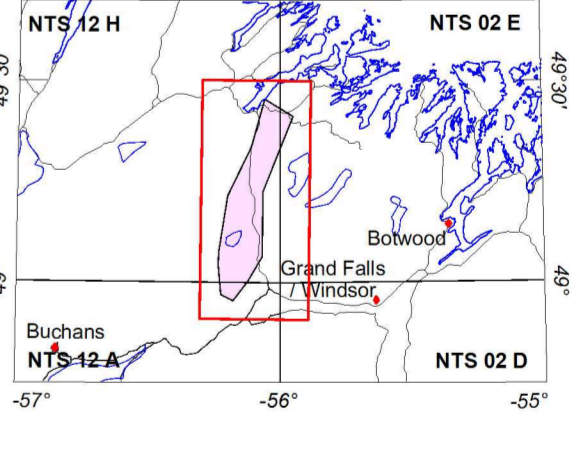


Preliminary Results - Residual Total Magnetic Field. This map presents preliminary results. Final quality control has not been completed. Digital data and final maps will be released when data processing is completed.

Résultats préliminaires - Composante résiduelle du champ magnétique total. Cette carte montre les résultats préliminaires. Le contrôle final de la qualité n'a pas été terminé. Les données numériques et les cartes finales seront publiées après le traitement des données sera terminé.



PLANIMETRIC SYMBOLS / SYMBOLES PLANIMÉTRIQUES. Table listing symbols for Road / Rue, Rail, Power Line, Drainage, and other features.



GULLBRIDGE NORTH AEROMAGNETIC SURVEY / LEVÉ AÉROMAGNÉTIQUE GULLBRIDGE NORD

OPEN FILE / DOSSIER PUBLIC 5599. Information regarding the file status and availability.

This airborne geophysical survey and the production of this map were funded by NRC's Targeted Capabilities Initiative 3 (TCI3) and by the Geological Survey, Newfoundland and Labrador, Department of Natural Resources. The map is a contribution to the TGI3 Program of the Earth Sciences Sector, NRC.

GSC OPEN FILE 5599 / DOSSIER PUBLIC 5599 DE LA CGC. NEWFOUNDLAND AND LABRADOR DEPARTMENT OF NATURAL RESOURCES, GEOLOGICAL SURVEY OPEN FILE NFLD/2944.

RESIDUAL TOTAL MAGNETIC FIELD / COMPOSANTE RÉSIDUELLE DU CHAMP MAGNÉTIQUE TOTAL

GULLBRIDGE NORTH AEROMAGNETIC SURVEY / LEVÉ AÉROMAGNÉTIQUE GULLBRIDGE NORD

NTS / SNRC : 02 D/13, 02 E/04.05, 12 A/16, 12 H/01.08. Newfoundland and Labrador / Terre-Neuve-et-Labrador

Authors: R. Dumont, J. Pélissier, et D. Oleschuk. Location of the survey was conducted by Fugro Airborne Surveys, Toronto, Ontario. The production of this map was effected by the Commission géologique du Canada, Ottawa, Ontario.

PRELIMINARY / PRÉLIMINAIRE

Recorded Caption: Dumont, R., Pélissier, J., et Oleschuk, D. 2007. Carte géophysique aéroportée de levé aéromagnétique total. NTS 02 D/13, 02 E/04.05, 12 A/16, 12 H/01.08. Terre-Neuve-et-Labrador. Newfoundland and Labrador Department of Natural Resources, Geological Survey Open File NFLD/2944. Échelle 1:50 000.

Scale 1:50 000 - Échelle 1:50 000. Includes a graphical scale bar.