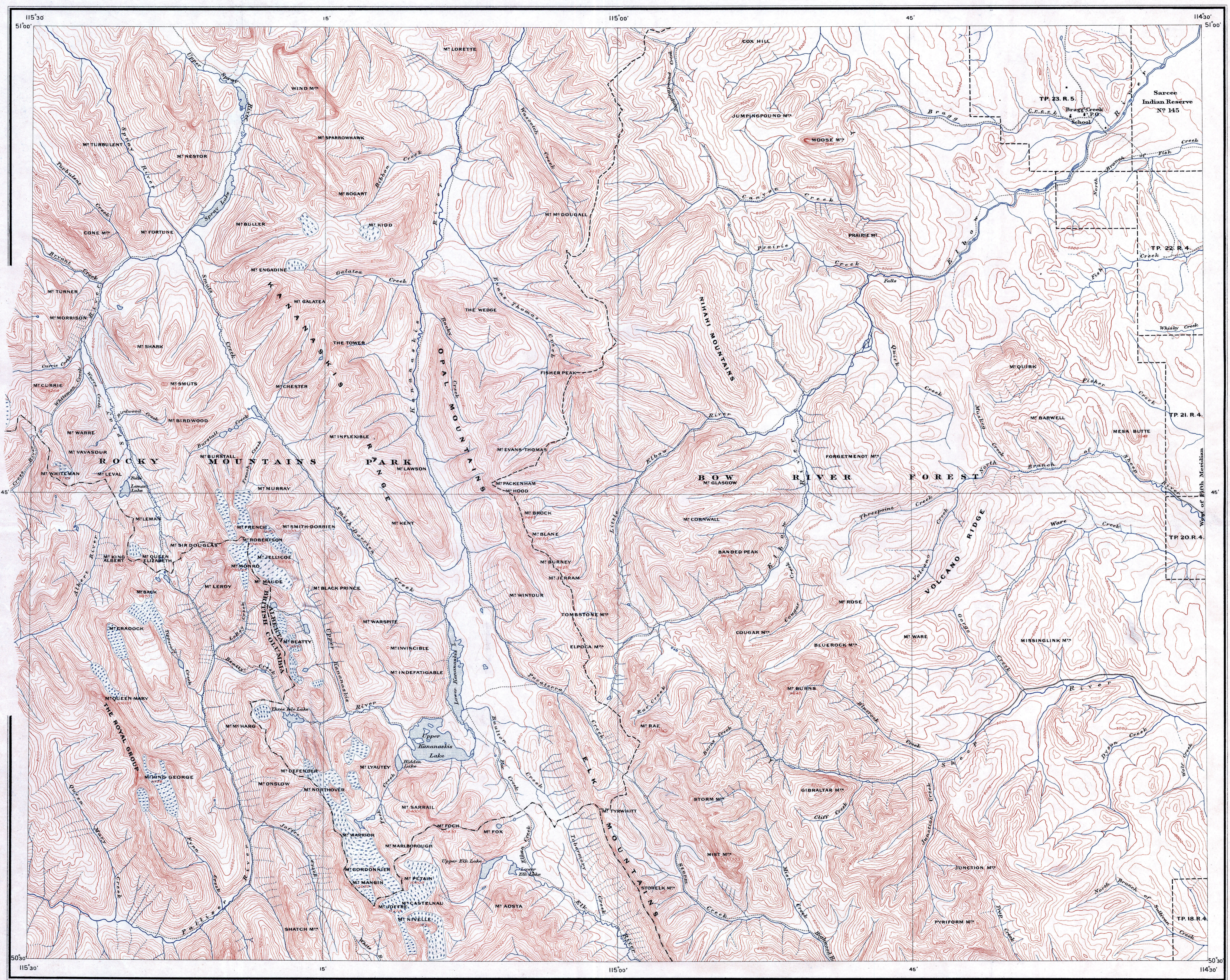


Palliser - Kananaskis
51-2
A, Top



LEGEND

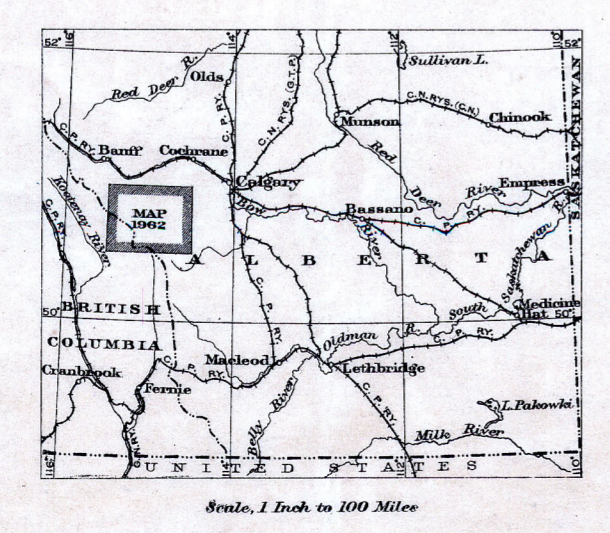
- Buildings
- Road
- Road (poor)
- Trail
- Mine tunnel
- Township, park, or forest boundary
- Intermittent stream
- Glacier
- Contours (showing land forms and elevations)
- 7000
- Height in feet

Approximate magnetic declination 25'00" East.
Elevations referred to Mean sea level.

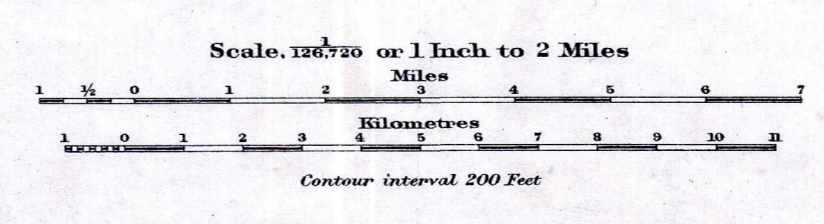
C.O. Semical, Geographer and Chief Draughtsman.

Publication No. 1962
Price, 10 cents.

Palliser-Kananaskis
51-2
A, Top



PALLISER-KANANASKIS AREA
BRITISH COLUMBIA AND ALBERTA



This document was produced by scanning the original publication. Ce document est le produit d'une numérisation par balayage de la publication originale.

TOPOGRAPHY
W.H. Boyd, Chief Topographical Engineer.
Surveys and topography by D.A. Nichols, 1916.
Interprovincial Boundary from published maps by Interprovincial Boundary Commission.
Eastern portion of map area based on topographical map published by the Department of the Interior.

LIBRARY
GEOLOGICAL SURVEY
OF CANADA

G
3401
.C5
1856
G4

OMMC 1962 c.1