

Canada
Department of Mines

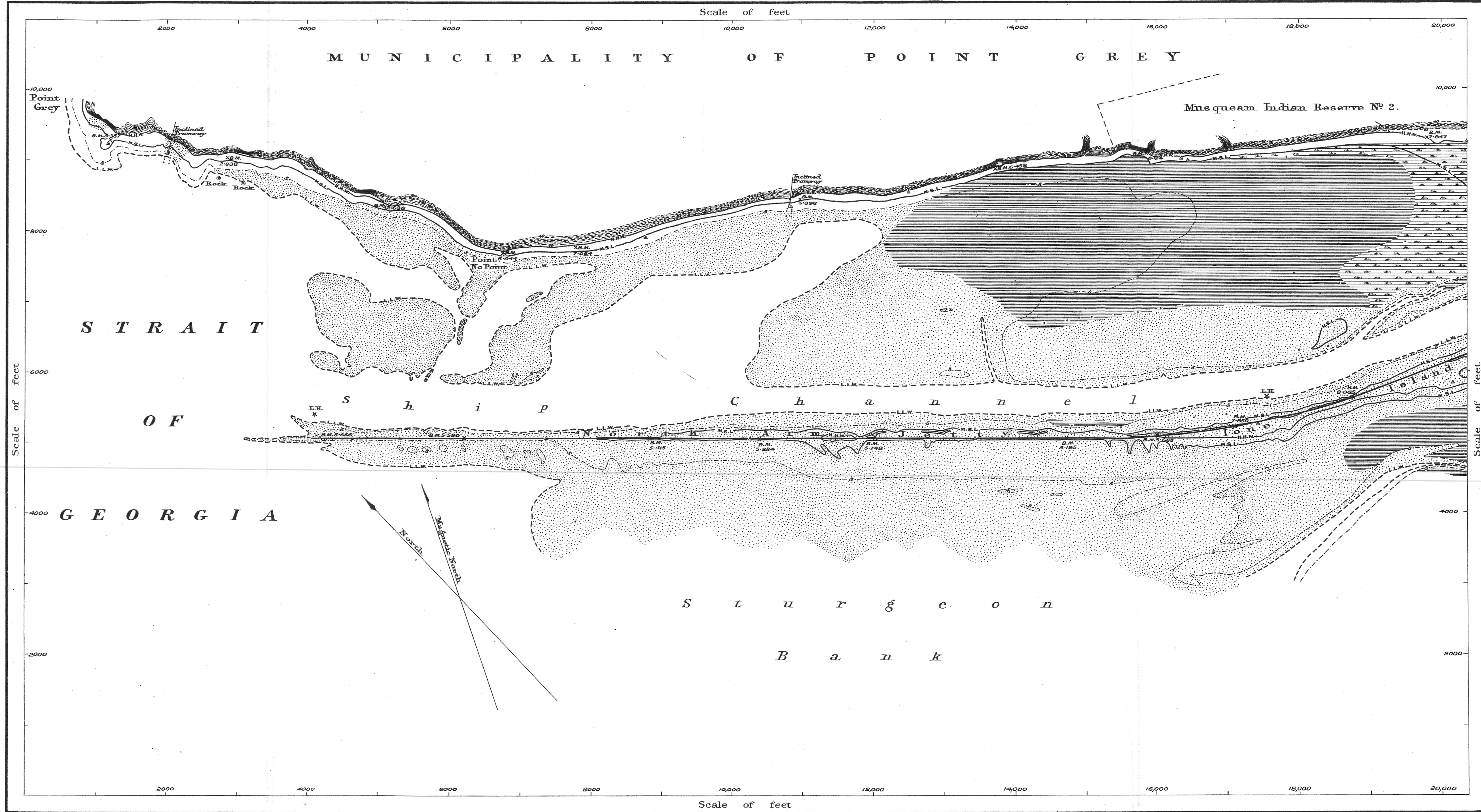
HON. SIR JAMES A. LOUGHEED, MINISTER; CHARLES CAMSELL, DEPUTY MINISTER.

GEOLOGICAL SURVEY
W. H. COLLINS, DIRECTOR.

Issued 1921

FRASER RIVER INVESTIGATION

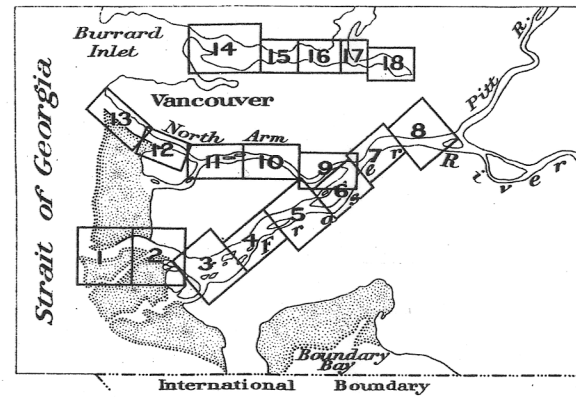
SHEET N° 13.



LEGEND

- | | |
|--|--|
| | |
| | |
| | |
| | |
| | |
| | |
| | |
| | |
| | |
| | |
| | |
| | |
| | |
| | |
| | |
| | |
| | |

INDEX TO SHEETS



NORTH ARM OF FRASER RIVER
-Point Grey Sheet-
BRITISH COLUMBIA

Scale, 12,000 or 1000 feet to 1 inch



Contour interval 5 feet

TOPOGRAPHY
W.H. Boyd, Chief Topographer.
Surveys and topography by J.R. Cox, 1919.

Publication N° 1917

This document was produced by scanning the original publication.
Ce document est le produit d'une numérisation par balayage de la publication originale.