

**High Sensitivity Airborne Gamma-Ray Spectrometric and Aeromagnetic Surveys
Cree Lake, Saskatchewan**

In 2006, Sander Geophysics Limited completed a multi-sensor airborne geophysical survey of the Cree Lake area, Saskatchewan, for the Geological Survey of Canada and Saskatchewan Industry and Resources. The purpose of the survey was to obtain quantitative gamma-ray spectrometric and aeromagnetic data. The survey was flown from July 28 to September 5, 2006 using Britten Norman Islander aircraft, registration C-GSGX.

Gamma-ray Spectrometric Data
The airborne gamma-ray measurements were made with an Exploranium GR820 gamma-ray spectrometer using fourteen 102 x 102 x 406 mm NaI (Tl) crystals. The main detector array consisted of twelve crystals (total volume 50.4 litres). Two crystals (total volume 8.4 litres), shielded by the main array, were used to detect variations in background radiation caused by atmospheric radon. The system constantly monitored the natural thorium peak for each crystal, and using a Gaussian least squares algorithm, adjusted the gain for each crystal.

Potassium is measured directly from the 1460 keV gamma-ray photons emitted by ⁴⁰K, whereas uranium and thorium are measured indirectly from gamma-ray photons emitted by daughter products (²¹⁴Pb for uranium and ²¹⁴Pb for thorium). Although these daughters are far down their respective decay chains, they are assumed to be in equilibrium with their parents; thus gamma-ray spectrometric measurements of uranium and thorium are referred to as equivalent uranium and equivalent thorium, i.e. eU and eTh. The energy windows used to measure potassium, uranium and thorium are:

Potassium (⁴⁰ K)	1370	1570 keV
Uranium (²³⁸ U)	1860	1860 keV
Thorium (²³² Th)	2410	2810 keV

Gamma-ray spectra were recorded at one-second intervals at a planned terrain clearance of 125 m and an average air speed of 218 km/h. Noise Adjusted Singular Value Decomposition (NASVD) analysis was carried out on the full spectrum 256 channel data to reduce statistical noise in the windowed data. During processing counts were accumulated into the windows described above. Counts from the radon detectors were recorded in a 1660 - 1800 keV window and radiation at energies greater than 3000 keV was recorded in the cosmic window. The window counts were corrected for dead time, and for background activity from cosmic radiation, the radioactivity of the aircraft and atmospheric radon decay products. The window data were then corrected for spectral scattering in the ground, air and detectors. Corrections for deviations of altitude from the planned terrain and for variations of temperature and pressure were made prior to conversion to ground concentrations of potassium, uranium and thorium, using factors determined from flights over a calibration range near Ottawa.

Potassium	102.4 cps/%
Uranium	8.5 cps/ppm
Thorium	5.2 cps/ppm

Corrected data were filtered and interpolated to a 100m grid for final map production. The results of an airborne gamma-ray spectrometer survey represent the average surface concentrations that are influenced by varying amounts of outcrop, overburden, vegetation cover, soil moisture and surface water. As a result the measured concentrations are usually lower than the actual bedrock concentration. The total air absorbed dose rate in nanograys per hour was produced from measured counts between 400 and 2810 keV.

Magnetic Data
The Islander aircraft was equipped with a Geometric G-822A cesium vapour magnetic sensor mounted in a slinger to the rear of the aircraft. The system recorded readings every 0.1 seconds with a noise level of less than 0.01 nT. Magnetic interferences caused by aircraft maneuvers were compensated using an RMSAADCII Magnetic compensator. Diurnal variations were recorded using a cesium vapour magnetometer.

After editing the survey data, the intersections of traverse and control lines were determined and the differences in the magnetic values were computed, analyzed and manually verified to obtain the leveling network. The International Geomagnetic Reference Field was calculated and removed using a fixed date (2006, 14, 08) and an altitude of 610m for each data point. The corrected magnetic data was interpolated to a 100m grid using a minimum curvature algorithm. The first vertical derivative grid was calculated from the corrected total magnetic intensity grid using a FFT based frequency domain filtering algorithm.

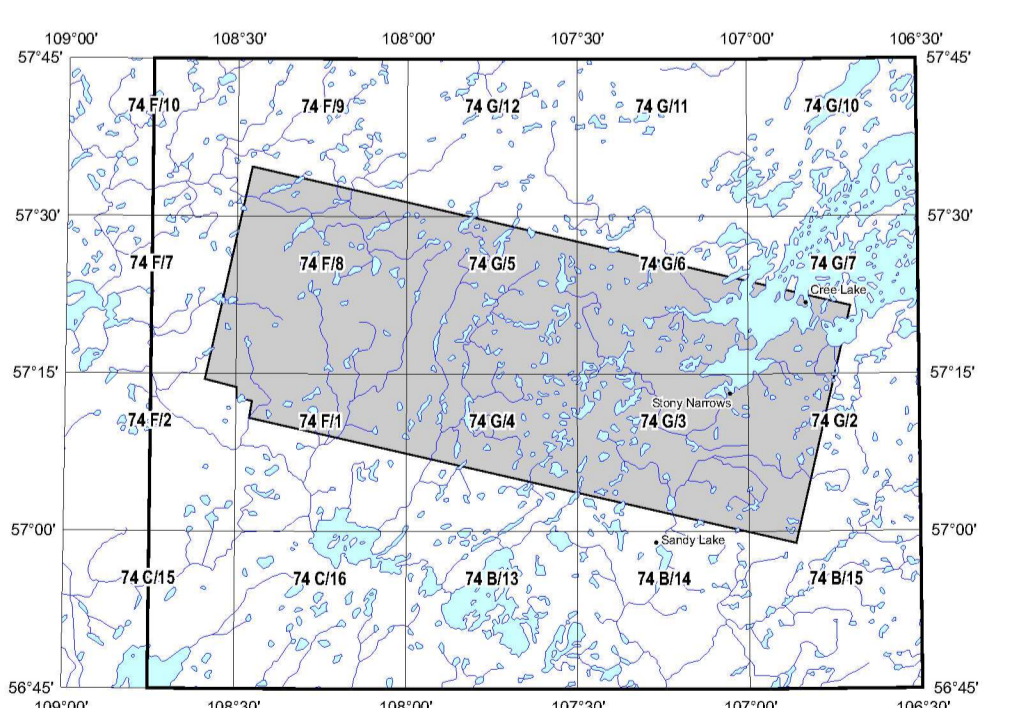
Positional Data
The 400 m spaced survey lines were oriented to a heading of 105 degrees and the 3000 m spaced control lines were oriented to a heading of 15 degrees. Survey and control line positions and elevations were pre-planned using Sander Geophysics Limited Smooth Drape software. Positional data were recorded using a Novatel EMA GPS ground station data were combined with airborne GPS data to produce differentially corrected positional data with an accuracy of 2 to 5 m.

Data Presentation
Colour levels and contours were calculated for each grid and combined with map surround information to create postscript plot files, which were plotted using HP DesignJet 1050c colour plotters.

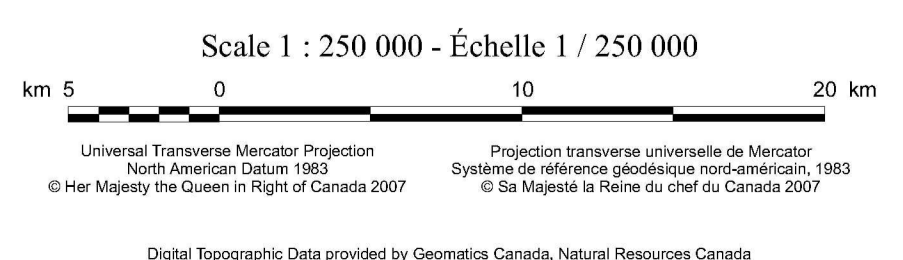
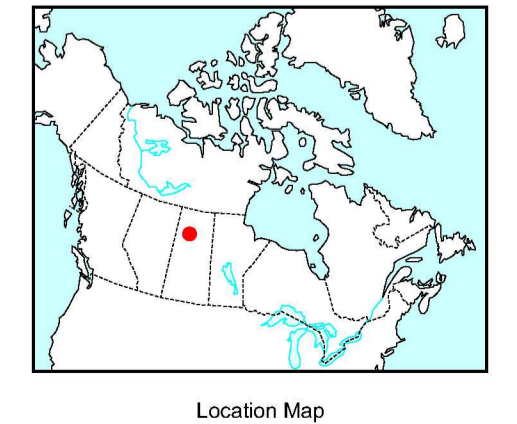
This airborne geophysical survey and the production of this map were funded by the Government of Saskatchewan's Mineral Exploration Incentive Program.

PLANIMETRIC SYMBOLS

Topographic Contour	
Drainage	
Wetland	
Permanent Ice	
Roads	
Trails	
Flight Line	



GEOPHYSICAL SERIES
CREE LAKE 74 B, 74 C, 74 F and 74 G, SASKATCHEWAN
CREE LAKE GEOPHYSICAL SURVEY, SASKATCHEWAN
THORIUM



OPEN FILE DOSSIER PUBLIC 5398 GEOLOGICAL SURVEY OF CANADA COMMISSION GÉOLOGIQUE DU CANADA 2007 SHEET 4 OF 10 FEUILLET 4 DE 10	Open files are products that have not gone through the GISC formal publication process. Les dossiers publics sont des produits qui n'ont pas été soumis au processus officiel de publication de la CGC.	OPEN FILE 2007-1 GOVERNMENT OF SASKATCHEWAN INDUSTRY AND RESOURCES 2007 SHEET 4 OF 10
---	--	--

Authors: Buckle, J.L., Carson, J.M., Coyle, M., Ford, K.L., Delaney, G., and Silimon, W.

Data acquisition, compilation and map production by Sander Geophysics Limited, Ottawa, Ontario. Contract and project management by the Geological Survey of Canada, Ottawa, Ontario.

NATIONAL TOPOGRAPHICAL SYSTEM REFERENCE AND GEOPHYSICAL MAP INDEX
SYSTÈME NATIONAL DE RÉFÉRENCE CARTOGRAPHIQUE ET INDEX DES CARTES GÉOPHYSIQUES

Recommended citation:
Buckle, J.L., Carson, J.M., Coyle, M., Ford, K.L., Delaney, G., and Silimon, W.
2007. Geophysical series, Cree Lake 74 B, 74 C, 74 F and 74 G, Saskatchewan;
Cree Lake Geophysical Survey, Saskatchewan;
Geological Survey of Canada, Open File 5398;
Saskatchewan Industry and Resources, Open File 2007-1;
scale 1:250 000.

THORIUM
GEOPHYSICAL SERIES
CREE LAKE 74 B, 74 C, 74 F and 74 G
SASKATCHEWAN
74 B, 74 C, 74 F and 74 G