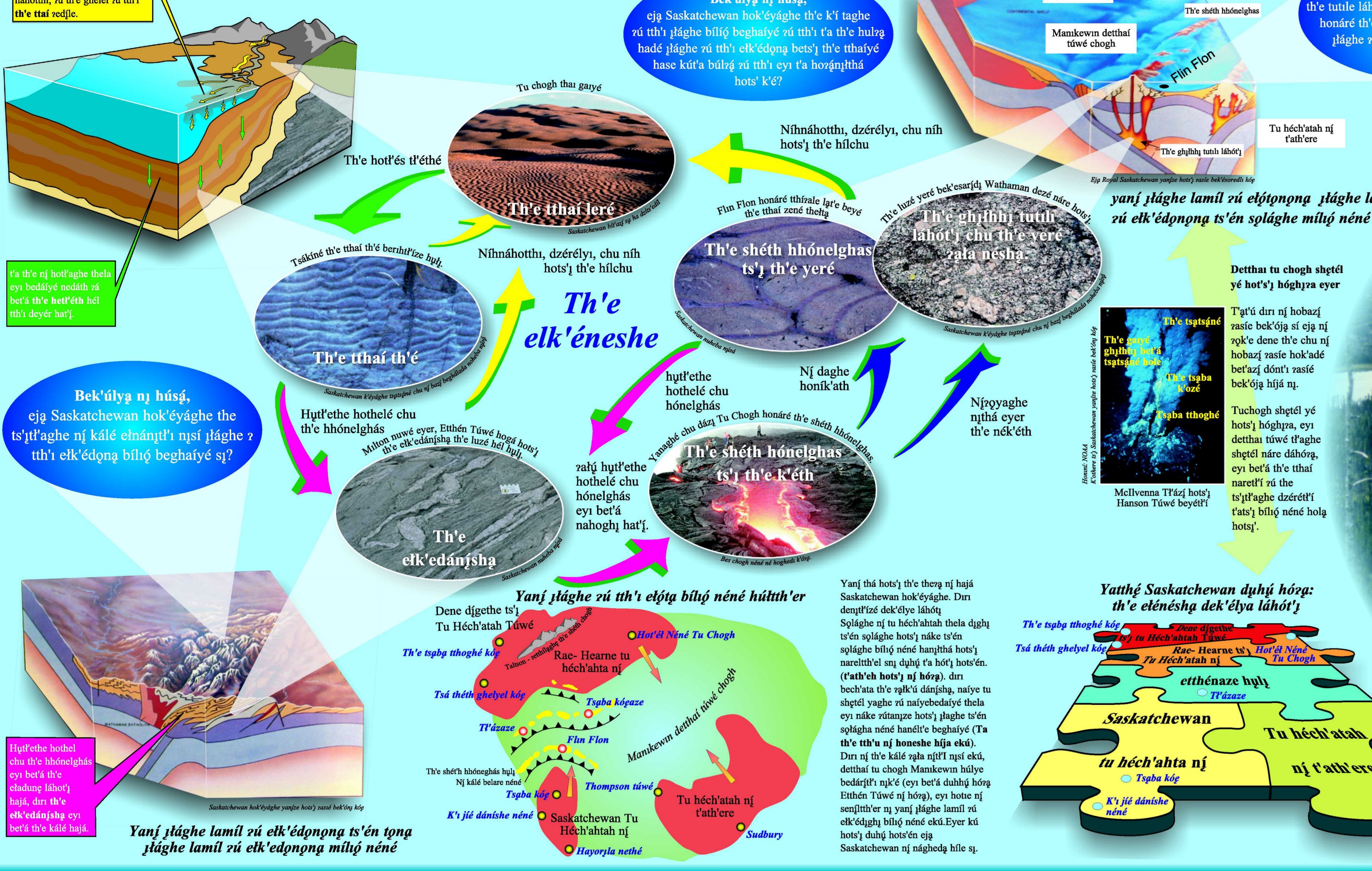


Ní th'e kálé hudzaí yatthé Saskatchewan Canada hok'éyághe

Eja Canada ní t'at'ú neshe sí begha n'zoriht'izé hólh hadáyorela beba.

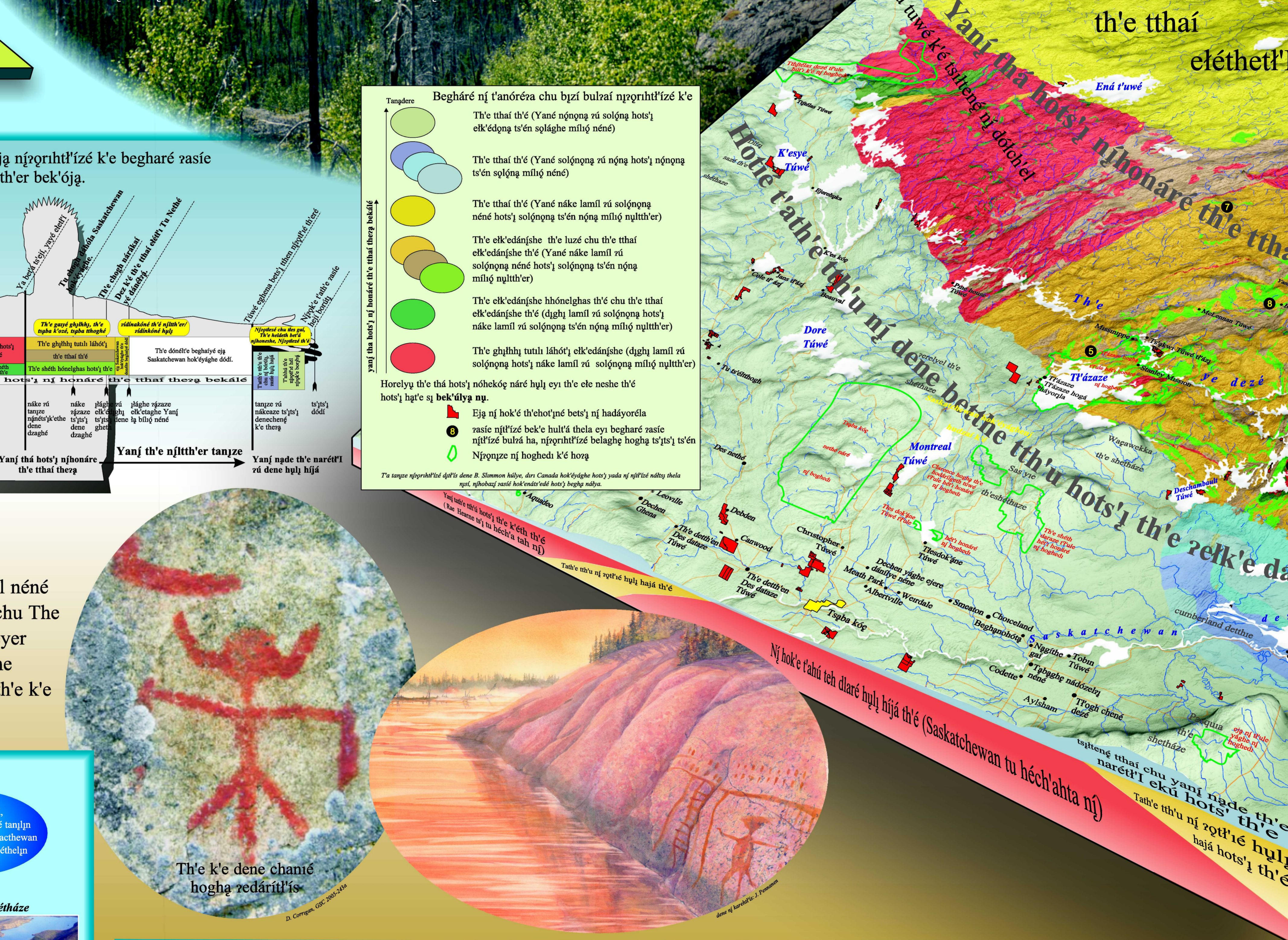
Nuní yatthé dené dáhíidí há'e s'í, t'ahúké n' k'e nághidí sí horelyu elk'éch'a há'e, th'e néné yú sheh' néné yú dechen yághe wú, tu k'e dáhura, des nethé honaré yú, th'i' tuaze th'i' íg. Duri n' bet'áz dághida. "Tahúké lost hadáyoriha híto n' honz' híto elk'ézé. T'á th'e n' h'az, zásté íg bet'a s'íth'h híto n'í. N'í h'oz'áz yú chu bér bet'a nohesk'ehé dághidíh' n' dechen th'i' íg. T'á bet'áz nohenéthel wú, kí d'ú n' h'oz, zásté íg s'íth'h. Kúllí ná'í n' h'oz'sim nohesá zásté th'ela, dechen bet'a yó h'oz' h'á th'ela wú, bet'áz th'i' dené k'é honéhel wú, th'i' t'yeh'a th'i' ná'í b'or beghash'íh' h'á th'i' íg. Deney yá'né n'í t'ád'íh'p'á n' dechen tu t'ánoré'a sí eyi begharé t'edé n'í th'e bet'a t'á yuwé h'oz' n'í t'í' s'í' elk'éch'a í'arot'í eyi th'i' bet'a zásté d'arít'í' í'ím. T'á'ú s'íg'h'a zásté bet'ór'é'al h'oz' h'á th'i' bet'ór'é'a, ulu melu zúth'h t'í'es yú g'ehok'h Bethenég bet'a nahó'h'í' h'ú'el'í. Doyr zásté bet'ór'é'a d'oh'í' h'am'í dené n'í h'eneren' h'íle n'íde, t'at'ú n'í' nohesá thegá bek'ó'g' h'íle n'íde. N'íh'oz'sim nohesá n'í' thesh'y bet'ór'é'a h'a, kúllí besod'é hoch'á' beghéd' h'oz'a.

Th'e dáyat'h horá n'ydé...



T'at'ú n'j bet'ór'é'zí

A collection of small circular images and text boxes showcasing various aspects of Saskatchewan's natural beauty and recreational activities. Images include people fishing, hiking, and enjoying the outdoors. Text boxes provide information about these activities and the natural resources that support them.



Tu nethe k'e th'e th'ai n'ílt'h'er: eja n'zok'e z'idínakoné dek'el dene ha h'ul'í ha.

A series of images and text boxes illustrating the different types of land in Saskatchewan. It shows various landscapes, from forests to open fields, and explains the different uses of these lands. Text boxes provide information about the importance of these lands for agriculture, industry, and recreation.

Canada néné hok'e tu dáh'yín

A collection of images and text boxes showcasing the diverse natural resources of Saskatchewan. It includes images of wildlife, forests, and natural landscapes. Text boxes provide information about these resources and the ways in which they are managed and used.

Eja yan' j'ághe lamil néné hots'í sn'í. Tsá kíng' chu Th'e Pas h'ul'yé háyori'la eyer hon'áré N'ón'á yú taghe hots'én nohesch'é th'e k'e d'arít'í' s' bóret'í.

A series of images and text boxes illustrating the different types of land in Saskatchewan. It shows various landscapes, from forests to open fields, and explains the different uses of these lands. Text boxes provide information about the importance of these lands for agriculture, industry, and recreation.

yan'j elk'éd'ng' yú s'ól'ng'ng' lamil néné ek'í

A series of images and text boxes illustrating the different types of land in Saskatchewan. It shows various landscapes, from forests to open fields, and explains the different uses of these lands. Text boxes provide information about the importance of these lands for agriculture, industry, and recreation.

yan'j elk'éd'ng' yú s'ól'ng'ng' lamil néné ek'í

A series of images and text boxes illustrating the different types of land in Saskatchewan. It shows various landscapes, from forests to open fields, and explains the different uses of these lands. Text boxes provide information about the importance of these lands for agriculture, industry, and recreation.

ya hots'í th'e nat'í' n'í natch'ul

A series of images and text boxes illustrating the different types of land in Saskatchewan. It shows various landscapes, from forests to open fields, and explains the different uses of these lands. Text boxes provide information about the importance of these lands for agriculture, industry, and recreation.

th'e heldeth k'e zásté beghálada

A series of images and text boxes illustrating the different types of land in Saskatchewan. It shows various landscapes, from forests to open fields, and explains the different uses of these lands. Text boxes provide information about the importance of these lands for agriculture, industry, and recreation.

th'e ber'ór'é'al h'ul'í yatthé Saskatchewan hok'éyághe

A series of images and text boxes illustrating the different types of land in Saskatchewan. It shows various landscapes, from forests to open fields, and explains the different uses of these lands. Text boxes provide information about the importance of these lands for agriculture, industry, and recreation.

zásté dene ha tseth'ela híle n'í hots'í' bet'ór'é'zí

A series of images and text boxes illustrating the different types of land in Saskatchewan. It shows various landscapes, from forests to open fields, and explains the different uses of these lands. Text boxes provide information about the importance of these lands for agriculture, industry, and recreation.

Th'e ten'g' k'áz'í' hane

A series of images and text boxes illustrating the different types of land in Saskatchewan. It shows various landscapes, from forests to open fields, and explains the different uses of these lands. Text boxes provide information about the importance of these lands for agriculture, industry, and recreation.

Th'e ten'g' k'áz'í' hane

A series of images and text boxes illustrating the different types of land in Saskatchewan. It shows various landscapes, from forests to open fields, and explains the different uses of these lands. Text boxes provide information about the importance of these lands for agriculture, industry, and recreation.

Th'e ten'g' k'áz'í' hane

A series of images and text boxes illustrating the different types of land in Saskatchewan. It shows various landscapes, from forests to open fields, and explains the different uses of these lands. Text boxes provide information about the importance of these lands for agriculture, industry, and recreation.

Th'e ten'g' k'áz'í' hane

A series of images and text boxes illustrating the different types of land in Saskatchewan. It shows various landscapes, from forests to open fields, and explains the different uses of these lands. Text boxes provide information about the importance of these lands for agriculture, industry, and recreation.

Th'e ten'g' k'áz'í' hane

A series of images and text boxes illustrating the different types of land in Saskatchewan. It shows various landscapes, from forests to open fields, and explains the different uses of these lands. Text boxes provide information about the importance of these lands for agriculture, industry, and recreation.

Th'e ten'g' k'áz'í' hane

A series of images and text boxes illustrating the different types of land in Saskatchewan. It shows various landscapes, from forests to open fields, and explains the different uses of these lands. Text boxes provide information about the importance of these lands for agriculture, industry, and recreation.